



Quarterly Grain Stocks

Southern Plains Regional Field Office · Post Office Box 70, Austin, Texas 78767 · 800-626-3142 · www.nass.usda.gov

Cooperating with the Oklahoma Department of Agriculture, Food and Forestry and Texas Department of Agriculture

January 12, 2023

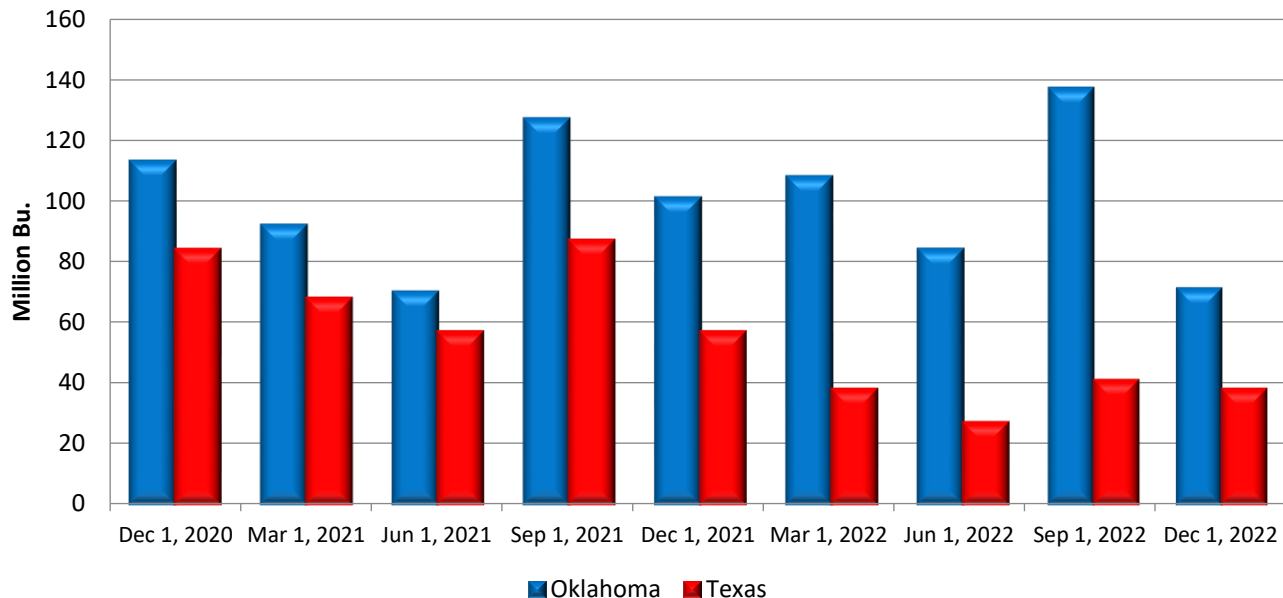
Contact: Brittany Brown or Authur Chapman

The grain stocks estimates are based on surveys conducted during the first two weeks of December. Data provided by Oklahoma and Texas operators are the foundation of the estimates for the Southern Plains region. Separate surveys are conducted to obtain the on-farm and off-farm estimates. We would like to thank all operators who responded to the survey. Results from the next quarterly survey will be made available on March 31, 2023.

Oklahoma stocks of wheat in all positions on December 1, at 70.8 million bushels, were down 30 percent from the 2021 level of 101 million bushels. Off-farm wheat stocks, at 67.7 million, bushels were 30 percent lower than December 1, 2021.

Texas stocks of wheat in all positions on December 1, at 38.2 million bushels, were down 33 percent from the 2021 level of 57.5 million bushels. Off-farm wheat stocks, at 36.2 million bushels, were 35 percent lower than December 1, 2021.

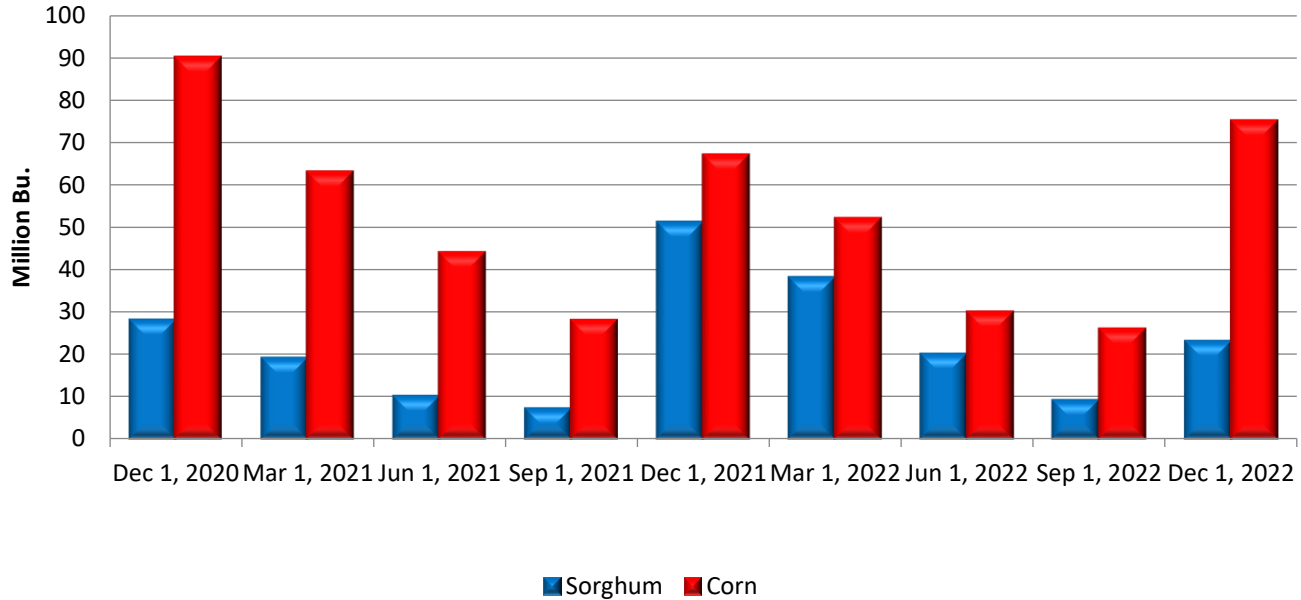
Quarterly Wheat Stocks All Positions



Texas sorghum stocks in all positions on December 1 totaled 23.8 million bushels, down 55 percent from the previous year. Off-farm sorghum stocks, at 22.7 million bushels, were 56 percent below December 1, 2021.

Texas off-farm corn stocks on December 1, 2022, at 74.6 million bushels, were up 12 percent from a year earlier. On-farm corn stocks are not published for Texas.

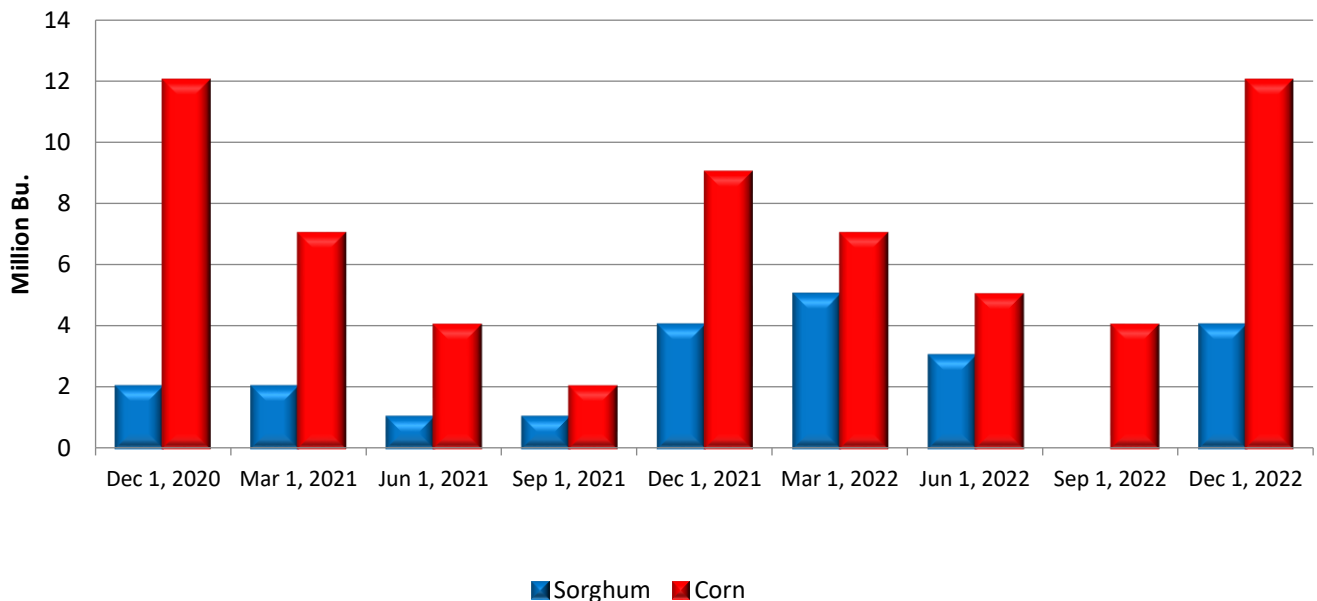
Texas Quarterly Stocks Sorghum and Corn, Off-farm



Oklahoma off-farm sorghum stocks, at 4.30 million bushels, were 8 percent above December 1, 2021. On-farm sorghum stocks are not published for the state.

Oklahoma off-farm corn stocks on December 1, 2022, at 12.5 million bushels, were up 37 percent from a year earlier. On-farm corn stocks are not published for Oklahoma.

Oklahoma Quarterly Stocks Sorghum and Corn, Off-farm



Stocks of Grain – Oklahoma, Texas, and United States: December 1, 2022 and Comparable Quarters

Item	Off farm Total ¹			Total all positions		
	Dec 1, 2021	Sep 1, 2022	Dec 1, 2022	Dec 1, 2021	Sep 1, 2022	Dec 1, 2022
	<i>1,000 bushels</i>	<i>1,000 bushels</i>	<i>1,000 bushels</i>	<i>1,000 bushels</i>	<i>1,000 bushels</i>	<i>1,000 bushels</i>
Oklahoma						
Barley	19	20	(D)	19	20	(D)
Corn	9,119	3,528	12,489	(D)	(D)	(D)
Oats	99	(D)	158	(D)	(D)	(D)
Soybeans	(D)	(D)	1,738	(D)	(D)	(D)
Sorghum	3,975	(D)	4,304	(D)	(D)	(D)
Wheat	96,753	129,997	67,724	100,753	136,997	70,824
Texas						
Barley	(D)	(D)	303	(D)	(D)	303
Corn	66,814	25,737	74,575	(D)	(D)	(D)
Oats	(D)	247	510	(D)	(D)	(D)
Soybeans	762	(D)	2,525	(D)	(D)	(D)
Sorghum	51,378	8,614	22,740	53,078	8,734	23,840
Wheat	56,065	37,629	36,221	57,465	41,029	38,221
United States						
Barley	54,103	44,234	50,158	97,223	165,604	113,698
Corn	4,407,181	867,390	4,061,350	11,641,181	1,376,890	10,809,350
Oats	36,871	20,897	29,404	55,401	62,547	53,584
Soybeans	1,614,524	211,464	1,545,044	3,136,524	274,394	3,022,044
Sorghum	260,226	44,817	142,447	289,676	47,277	160,247
Wheat	1,103,873	1,186,719	918,269	1,377,163	1,777,849	1,280,169

(D) Withheld to avoid disclosing data for individual operations.

¹ Includes stocks at mills, elevators, warehouses, terminals, and processors.

U.S. Highlights: Total stocks of corn in the United States on December 1, 2022 were 10.8 billion bushels, 7 percent lower than December 1, 2021. All wheat stocks were estimated at 1.28 billion bushels in all positions, down 7 percent from last December. U.S. stocks of sorghum totaled 160 million bushels, 45 percent below December 1, 2021. Stocks of soybeans in all positions totaled 3.02 billion bushels, down 4 percent from last year.

NASS provides accurate, timely, useful and objective statistics in service to U.S. agriculture. In order to view the full national report, please visit the following website: www.nass.usda.gov/Publications.