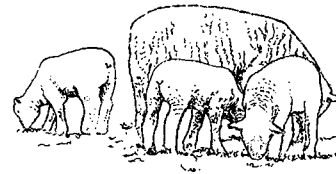


Livestock Inventory & Production, 2003

By Charles E. Less

The total value of all cattle, hogs and sheep on Pennsylvania farms during 2003 was \$1.6 billion, unchanged from the previous year. Cattle inventory was valued at \$1.52 billion on January 1, 2003, accounting for 94.5 percent of the total value of cattle, sheep and hogs in Pennsylvania. Sheep inventory, valued at \$12.9 million, accounted for 0.8 percent of the total. Hog inventory, valued at \$75.7 million on December 1, 2002, accounted for 4.7 percent of cattle, sheep and hog inventory value.



Sheep: January 1, 2004 sheep and lamb inventory totaled 85,000 head, down 10,000 head from January 1, 2003. Commonwealth flocks included 71,000 breeding sheep and lambs and 14,000 market sheep and lambs. The total lamb crop for 2003 was 83,000 lambs, down 1,000 head from 2002. Wool production totaled 410,000 pounds, 20,000 pounds less than 2002 wool production.

The gross income from sheep production in 2003 was almost \$7.5 million, up 27 percent from 2002. The value of wool produced during the year was \$111,000, up \$3,000 from 2002. Sheep farms numbered 3,200, up 100 farms from last year. Pennsylvania ranked 14th in the United States in sheep and lamb inventory as of January 1, 2003.

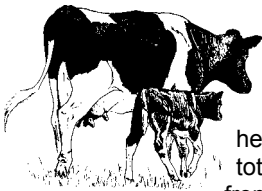
Red Meat Production: Pennsylvania red meat production, dressed weight basis, in commercial slaughter establishments totaled 1.264 billion pounds in 2003, up one percent from 2002. There were 331 commercial slaughter plants in Pennsylvania on January 1, 2003. Pennsylvania ranked 1st among all states in the number of commercial slaughter plants.

Commercial cattle slaughter totaled 1,052,000 head in 2003, 1 percent above the previous year. Total live weight for cattle slaughtered was 1.3 billion pounds. Average live weight at 1,270 pounds was 7 pounds below the 2002 average. Slaughter of calves weighing less than 500 pounds totaled 189,500 head, down less than 0.4 percent from 2002. Total live weight for calves slaughtered was 64.4 million pounds. The average live weight for calves, at 340 pounds, down one pound from 2002.

A total of 2,734,100 hogs were slaughtered in Pennsylvania in 2003, up 4 percent from 2002. Total live weight for hogs slaughtered was 681,516,000 pounds. The average live weight for hogs slaughtered was 249 pounds, down 2 pounds from 2002.

Sheep and lamb slaughter was at 82,000 head. Total live weight for sheep and lambs slaughtered was 8,688,000 pounds. Sheep slaughtered averaged 106 pounds live weight, up 3 pounds from the previous year.

Pennsylvania ranked 12th among all states in commercial red meat production in 2003. Pennsylvania's rankings by number of head slaughtered were: 7th for cattle, 1st for calves, 10th for hogs, and 6th for sheep.



Cattle: All cattle in Pennsylvania totaled 1,640,000 head on January 1, 2004, down 10,000 head from January 1, 2003. Of the total, 720,000 were cows and heifers that had calved. Milk cow inventory totaled 564,000, a 26,000 head decrease from one year earlier. The number of beef cows at 156,000 head, was up 6,000 head from last year. Heifers 500 pounds and over totaled 370,000, an increase of 5,000 head from January 1, 2003. There were 280,000 heifers for dairy replacement and 40,000 for beef cow replacement. Steers 500 pounds and over totaled 165,000. A total of 25,000 bulls 500 pounds and over were on hand. Calves under 500 pounds totaled 360,000, a 40,000 head jump from the previous year. The 2003 Pennsylvania calf crop totaled 650,000 head, down 10,000 head from the 2002 calf crop.

The gross income from cattle production was \$460.3 million in 2003, up 12.7 percent from the previous year. There were 28,000 Pennsylvania farms having cattle during 2003. Farms with milk cows decreased to 9,600 in 2003, down 200 operations. Pennsylvania ranked 4th in the United States in milk cow inventory on January 1, 2003, and tied with Virginia for 19th in cattle inventory.

Hogs: There were 1,110,000 hogs and pigs on Pennsylvania farms as of December 1, 2003, 20,000 head below the previous year. Breeding hog inventory, at 120,000 head, was 10,000 head less than the previous year. A total of 990,000 market hogs and pigs were on hand as of December 1, 2003, 10,000 head below last year.

Pennsylvania's pig crop in 2003 totaled 1,876,000, down almost one percent from 2002. A total of 200,000 sows farrowed in 2003, averaging 9.38 pigs per litter. The gross income from pork production was \$186.3 million for 2003, which was up 30 percent from 2002. Hog farmers numbered 3,500 in 2003, unchanged from the previous year. Pennsylvania's hog inventory ranked 12th in the United States on December 1, 2003.

