



United States Department of Agriculture  
National Agricultural Statistics Service  
**Southern Region News Release**  
**Cattle Inventory**



Cooperating with the Alabama Department of Agriculture and Industries, Florida Department of Agriculture and Consumer Services, Georgia Department of Agriculture, and South Carolina Department of Agriculture  
Southern Regional Field Office · 355 East Hancock Avenue, Suite 100 · Athens, GA 30601 · (706) 713-5400  
[www.nass.usda.gov](http://www.nass.usda.gov)

January 31, 2020

Media Contact: Anthony Prillaman

**US Cattle Inventory Down Slightly**

All cattle and calves in the United States as of January 1, 2020 totaled 94.4 million head, down slightly from the 94.8 million head on January 1, 2019. All cows and heifers that have calved, at 40.7 million head, were 1 percent below the 41.0 million head on January 1, 2019. Beef cows, at 31.3 million head, were down 1 percent from a year ago. Milk cows, at 9.33 million head, were down slightly from the previous year. Alabama all cattle and calves totaled 1.31 million head, a slight increase from January 1, 2019. Florida inventory remained unchanged at 1.68 million head. All cattle and calves in Georgia totaled 1.10 million, up 3 percent from the previous year. South Carolina inventory, at 340,000 head, is down 3 percent.

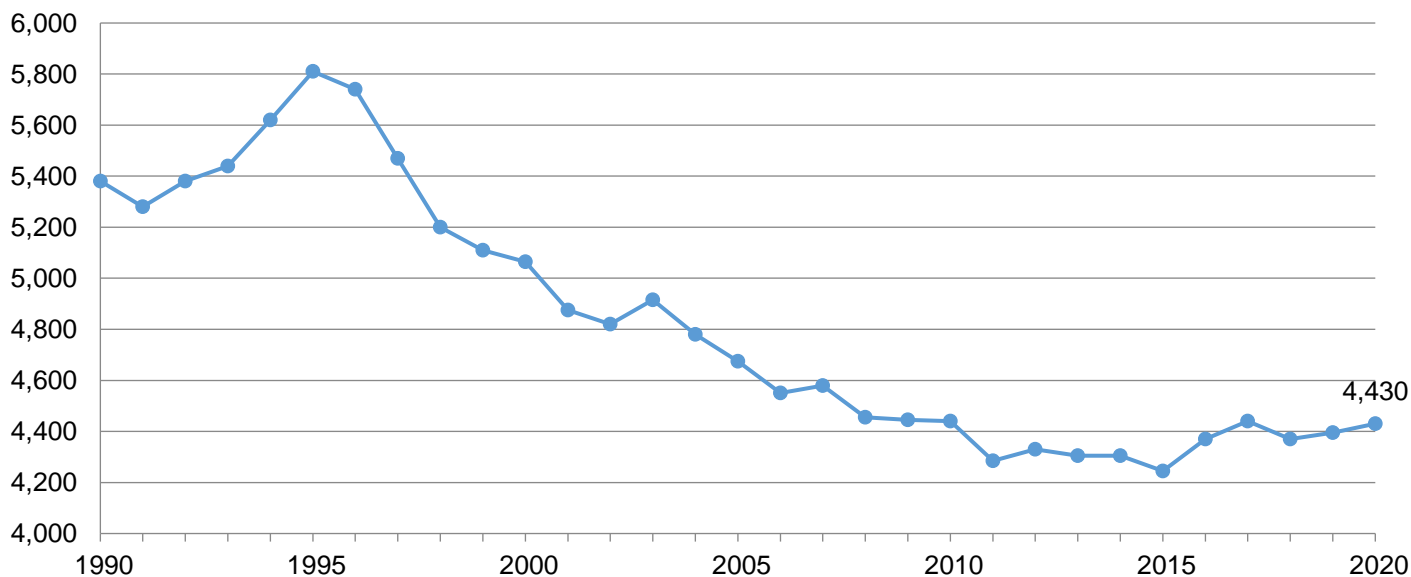
**Cattle and Calves — States and United States: January 1, 2019 and 2020**

State	Cattle and calves		
	2019	2020	Percent of previous year
	(1,000 head)	(1,000 head)	(percent)
Alabama .....	1,300.0	1,310.0	101
Florida .....	1,680.0	1,680.0	100
Georgia.....	1,070.0	1,100.0	103
South Carolina.....	350.0	340.0	97
United States .....	94,804.7	94,413.3	100

Source: USDA National Agricultural Statistics Service - *Cattle*, January 2020

**Southern Region All Cattle Inventory: 1990-2020**

Thousand Head



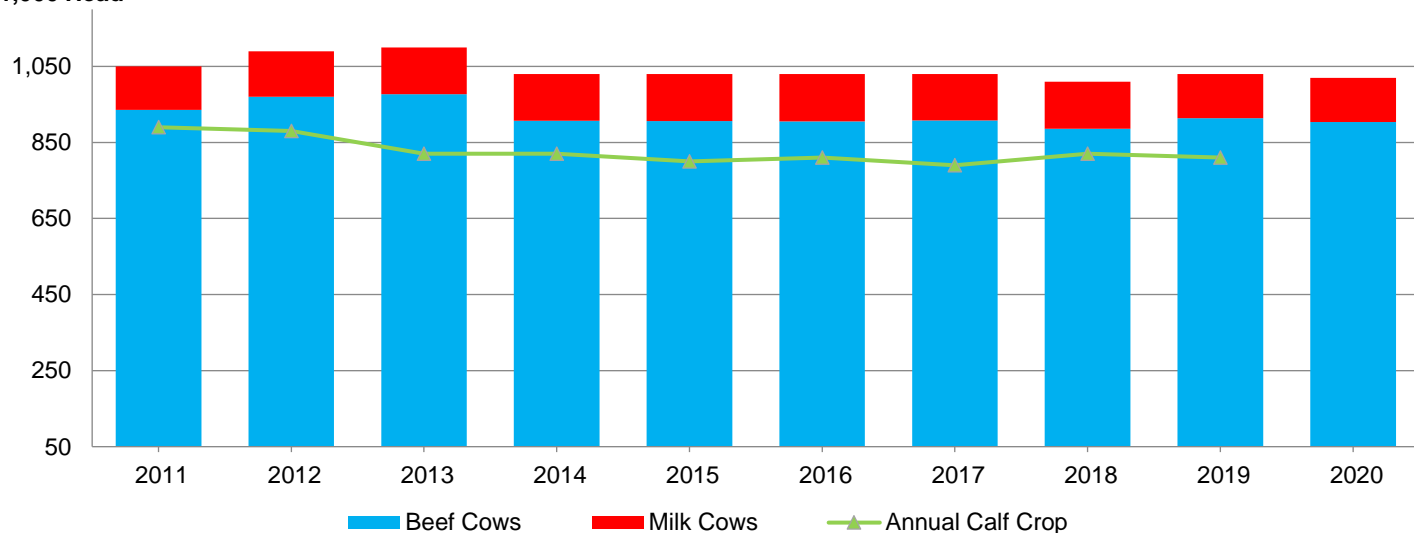
## All Cows by Type — States and United States: January 1, 2019 and 2020

State	All cows			Beef cows			Milk cows		
	2019	2020	Percent of previous year	2019	2020	Percent of previous year	2019	2020	Percent of previous year
	(1,000 head)	(1,000 head)	(percent)	(1,000 head)	(1,000 head)	(percent)	(1,000 head)	(1,000 head)	(percent)
Alabama.....	710.0	700.0	99	705.0	696.0	99	5.0	4.0	80
Florida.....	1,030.0	1,020.0	99	914.0	904.0	99	116.0	116.0	100
Georgia.....	580.0	600.0	103	499.0	519.0	104	81.0	81.0	100
South Carolina.....	200.0	190.0	95	186.0	179.0	96	14.0	11.0	79
United States.....	41,044.1	40,651.3	99	31,690.7	31,316.7	99	9,353.4	9,334.6	100

Source: USDA National Agricultural Statistics Service - *Cattle*, January 2020

## Florida Cow Inventory and Calf Crop

1,000 Head



## Heifers 500 Pounds and Over by Type — States and United States: January 1, 2019 and 2020

State	Beef replacements			Milk replacements			Other heifers		
	2019	2020	Percent of previous year	2019	2020	Percent of previous year	2019	2020	Percent of previous year
	(1,000 head)	(1,000 head)	(percent)	(1,000 head)	(1,000 head)	(percent)	(1,000 head)	(1,000 head)	(percent)
Alabama.....	116.0	114.0	98	2.0	2.0	100	37.0	44.0	119
Florida.....	130.0	130.0	100	35.0	35.0	100	25.0	25.0	100
Georgia.....	90.0	90.0	100	30.0	30.0	100	30.0	35.0	117
South Carolina.....	37.0	26.0	70	5.0	4.0	80	8.0	11.0	138
United States.....	5,884.9	5,771.9	98	4,701.5	4,637.0	99	9,623.6	9,705.5	101

Source: USDA National Agricultural Statistics Service - *Cattle*, January 2020

## Steers, Bulls, and Calves — States and United States: January 1, 2019 and 2020

State	Steers 500 pounds and over			Bull 500 pounds and over			Calves under 500 pounds		
	2019	2020	Percent of previous year	2019	2020	Percent of previous year	2019	2020	Percent of previous year
	(1,000 head)	(1,000 head)	(percent)	(1,000 head)	(1,000 head)	(percent)	(1,000 head)	(1,000 head)	(percent)
Alabama.....	45.0	50.0	111	45.0	50.0	111	345.0	350.0	101
Florida.....	20.0	25.0	125	60.0	55.0	92	380.0	390.0	103
Georgia.....	37.0	43.0	116	33.0	32.0	97	270.0	270.0	100
South Carolina.....	10.0	12.0	120	14.0	13.0	93	76.0	84.0	111
United States.....	16,757.7	16,671.2	99	2,253.0	2,237.4	99	14,539.9	14,739.0	101

Source: USDA National Agricultural Statistics Service - *Cattle*, January 2020