



United States Department of Agriculture
National Agricultural Statistics Service
Southern Region News Release
Cattle Inventory



Cooperating with the Alabama Department of Agriculture and Industries, Florida Department of Agriculture and Consumer Services, Georgia Department of Agriculture, and South Carolina Department of Agriculture
Southern Regional Field Office · 355 East Hancock Avenue, Suite 100 · Athens, GA 30601 · (800) 253-4419
www.nass.usda.gov

This report contains the results from the **January 2024 Cattle Report**. Our thanks to all who responded to this survey.

January 31, 2024

Media Contact: Anthony Prillaman

US Cattle Inventory Down 2 Percent

Inventory of all cattle and calves in the United States, as of January 1, 2024, totaled 87.2 million head, down 2 percent from the 88.8 million head on January 1, 2023. All cows and heifers that have calved, at 37.6 million head, were 2 percent below the 38.3 million head on January 1, 2023. Beef cows, at 28.2 million head, were down 2 percent from a year ago. Milk cows, at 9.36 million head, were down slightly from the previous year. Alabama all cattle and calves totaled 1.17 million head; 6 percent lower than January 1, 2023. Florida all cattle and calves inventory decreased 3 percent from the previous year to 1.56 million head. All cattle and calves in Georgia totaled 1.01 million head, down 2 percent from 2023. South Carolina all cattle and calves inventory, at 290,000 head, was down 8 percent from the previous year.

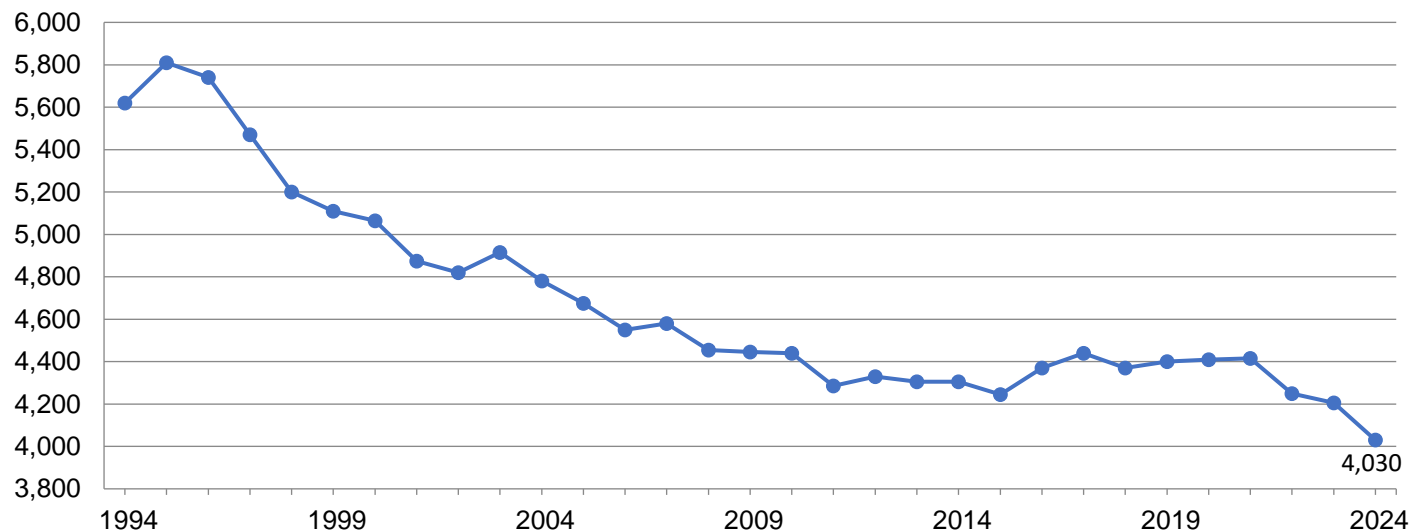
Cattle and Calves – States and United States: January 1, 2023 and 2024

State	Cattle and calves		
	2023	2024	Percent of previous year
	(1,000 head)	(1,000 head)	(percent)
Alabama	1,250.0	1,170.0	94
Florida	1,610.0	1,560.0	97
Georgia.....	1,030.0	1,010.0	98
South Carolina.....	315.0	290.0	92
United States	88,841.0	87,157.4	98

Source: USDA National Agricultural Statistics Service - [Cattle](#), January 2024

Southern Region All Cattle Inventory: 1994-2024

Thousand Head



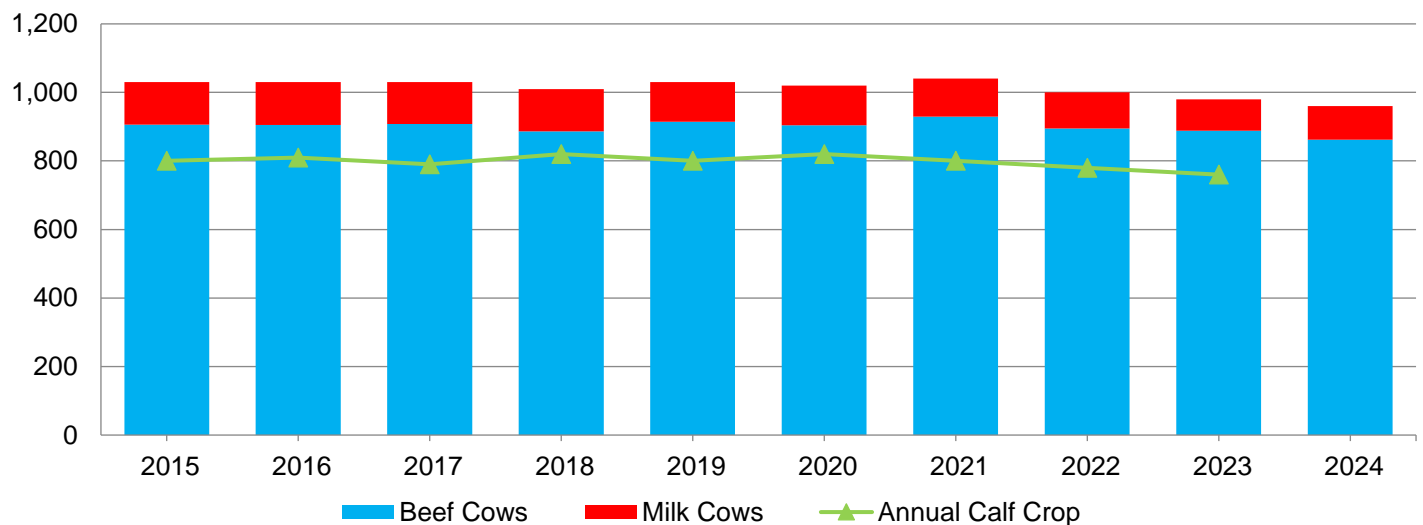
All Cows That Have Calved by Type – States and United States: January 1, 2023 and 2024

State	All cows			Beef cows			Milk cows		
	2023	2024	Percent of previous year	2023	2024	Percent of previous year	2023	2024	Percent of previous year
	(1,000 head)	(1,000 head)	(percent)	(1,000 head)	(1,000 head)	(percent)	(1,000 head)	(1,000 head)	(percent)
Alabama.....	680.0	640.0	94	678.0	638.0	94	2.0	2.0	100
Florida.....	980.0	960.0	98	888.0	862.0	97	92.0	98.0	107
Georgia.....	570.0	550.0	96	478.0	459.0	96	92.0	91.0	99
South Carolina ...	168.0	156.0	93	159.0	148.0	93	9.0	8.0	89
United States	38,336.8	37,579.8	98	28,939.3	28,223.0	98	9,397.5	9,356.8	100

Source: USDA National Agricultural Statistics Service - [Cattle](#), January 2024

Florida Cow Inventory and Calf Crop

Thousand Head



Heifers 500 Pounds and Over by Type – States and United States: January 1, 2023 and 2024

State	Beef replacements			Milk replacements			Other heifers		
	2023	2024	Percent of previous year	2023	2024	Percent of previous year	2023	2024	Percent of previous year
	(1,000 head)	(1,000 head)	(percent)	(1,000 head)	(1,000 head)	(percent)	(1,000 head)	(1,000 head)	(percent)
Alabama.....	107.0	96.0	90	2.0	2.0	100	46.0	47.0	102
Florida.....	120.0	115.0	96	30.0	30.0	100	20.0	25.0	125
Georgia.....	90.0	85.0	94	20.0	25.0	125	28.0	30.0	107
South Carolina ...	30.0	26.0	87	4.0	4.0	100	10.0	8.0	80
United States	4,929.6	4,858.3	99	4,073.6	4,059.2	100	9,757.5	9,565.5	98

Source: USDA National Agricultural Statistics Service - [Cattle](#), January 2024

Steers, Bulls, and Calves – States and United States: January 1, 2023 and 2024

State	Steers 500 pounds and over			Bulls 500 pounds and over			Calves under 500 pounds		
	2023	2024	Percent of previous year	2023	2024	Percent of previous year	2023	2024	Percent of previous year
	(1,000 head)	(1,000 head)	(percent)	(1,000 head)	(1,000 head)	(percent)	(1,000 head)	(1,000 head)	(percent)
Alabama.....	46.0	47.0	102	44.0	43.0	98	325.0	295.0	91
Florida.....	25.0	25.0	100	50.0	50.0	100	385.0	355.0	92
Georgia.....	37.0	38.0	103	30.0	32.0	107	255.0	250.0	98
South Carolina ...	12.0	10.0	83	11.0	11.0	100	80.0	75.0	94
United States	16,056.5	15,789.2	98	2,029.0	2,020.7	100	13,658.0	13,284.7	97

Source: USDA National Agricultural Statistics Service - [Cattle](#), January 2024