



South Carolina Crop Progress and Condition Report



Cooperating with the South Carolina Department of Agriculture
Southern Regional Field Office · 355 East Hancock Avenue, Suite 100 · Athens, GA 30601 · (800) 253-4419
www.nass.usda.gov

This report contains data collected each week from respondents across the state whose occupations provide them opportunities to discuss agricultural production with farmers in their counties as well as to make visual observations. We thank all who have contributed to this report.

August 8, 2022

Media Contact: Jacqueline Moore

General

According to the National Agricultural Statistics Service in South Carolina, there were 6.3 days suitable for fieldwork for the week ending Sunday, August 7, 2022. Precipitation ranged from trace amounts to 4.9 inches of rain. Average high temperatures ranged from the high 80s to the mid 90s. Average low temperatures ranged from the high 60s to the high 70s.

Crops

Another week of scattered showers across the state brought some relief from heat and helped replenish soil moisture levels.

Corn harvest began in some areas with mixed yields as fields continued to mature. Field borders were mowed, and grain bins prepared for corn harvest ramping up in the upcoming weeks. Dairy farmers in the Lowcountry region were finishing corn silage harvest and were replanting for additional silage later in the season. Cotton squaring neared completion as bolls were setting and beginning to open. Fields in the Pee Dee region were noted to be showing signs of stress from heat and were shedding some new bolls. Soybeans fields continued to bloom and set pods. Tobacco topped neared completion and harvest continued in line with historic progress.

Livestock and Pastures

Cattle remained in mostly fair to good condition. Pastures were in mostly fair condition and continued to deteriorate in some areas due to high temperatures and a lack of rain.

Crop Progress for Week Ending 08/07/22

Crop stage	Prev year (percent)	Prev week (percent)	This week (percent)	5 Year avg (percent)
Corn - Mature	66	59	71	62
Corn - Harvested	1	1	3	3
Cotton - Squaring.....	98	94	97	93
Cotton - Setting Bolls	77	70	81	68
Cotton - Bolls Opening.....	0	NA	1	0
Hay - 2nd Cutting.....	72	65	73	64
Peaches - Harvested	87	85	90	82
Peanuts - Pegging	95	90	93	91
Soybeans - Blooming.....	64	53	59	55
Soybeans - Setting Pods ...	19	23	27	20
Tobacco - Topped.....	94	91	95	94
Tobacco - Harvested	48	30	40	44

(NA) Not available.

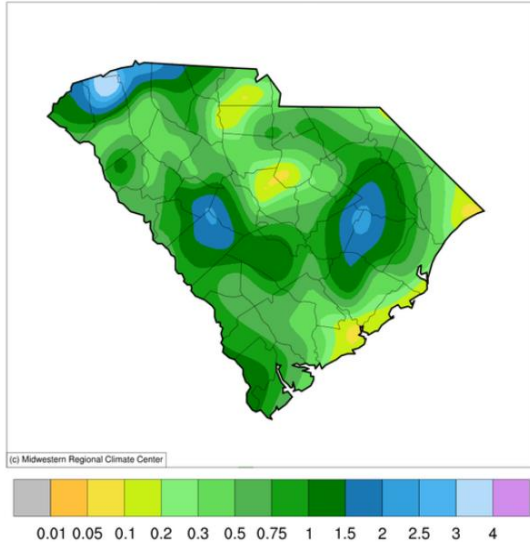
Conditions for Week Ending 08/07/22

Crop	Very poor (percent)	Poor (percent)	Fair (percent)	Good (percent)	Excellent (percent)
Cattle.....	0	0	41	48	11
Corn	8	14	32	42	4
Cotton.....	0	3	27	60	10
Pasture and range	2	12	48	35	3
Peanuts	0	0	18	67	15
Soybeans	0	2	36	51	11
Tobacco.....	0	0	10	63	27

Soil Moisture for Week Ending 08/07/22

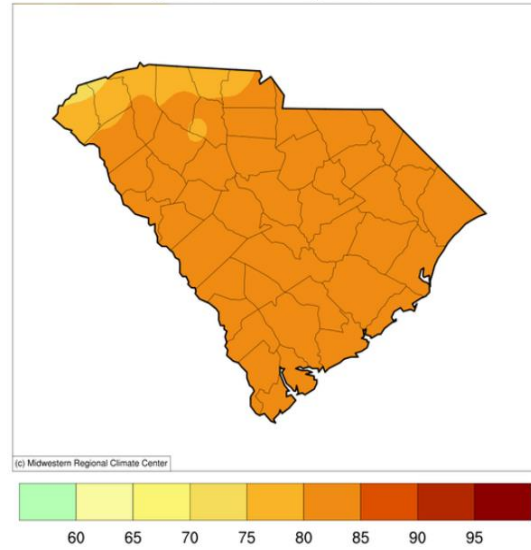
Topsoil	Previous week (percent)	This week (percent)
Very short.....	9	9
Short.....	27	35
Adequate.....	64	55
Surplus	0	1
Subsoil	Previous week (percent)	This week (percent)
Very short.....	1	1
Short.....	24	23
Adequate	75	76
Surplus	0	0

Accumulated Precipitation (in)
August 01, 2022 to August 07, 2022



<https://mrcc.purdue.edu/CLIMATE>

Average Temperature (°F)
August 01, 2022 to August 07, 2022

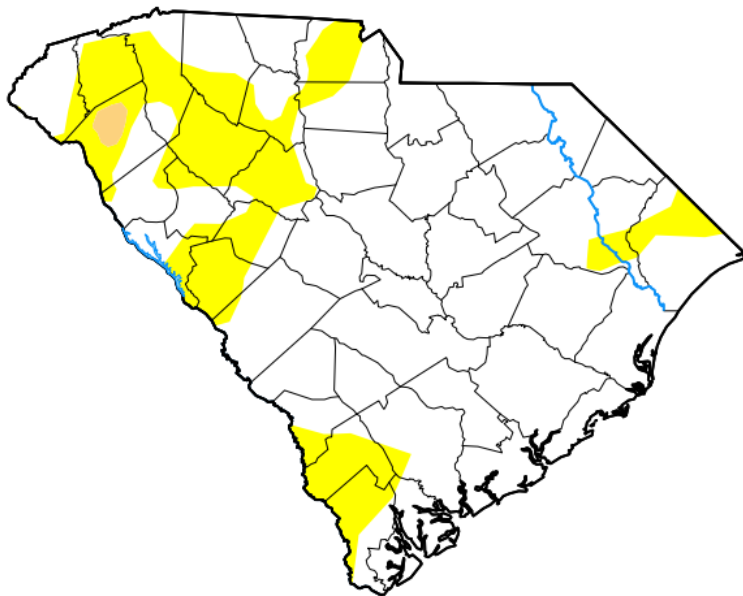


<https://mrcc.purdue.edu/CLIMATE>

For the state's complete Weekly Weather Summary http://www.dnr.sc.gov/climate/sco/ClimateData/cli_reports_2022.php

U.S. Drought Monitor South Carolina

August 2, 2022
(Released Thursday, Aug. 4, 2022)
Valid 8 a.m. EDT



Drought Conditions (Percent Area)

	None	D0-D4	D1-D4	D2-D4	D3-D4	D4
Current	78.63	21.37	0.47	0.00	0.00	0.00
Last Week <i>07-26-2022</i>	77.58	22.42	0.00	0.00	0.00	0.00
3 Months Ago <i>05-03-2022</i>	59.20	40.80	24.69	0.00	0.00	0.00
Start of Calendar Year <i>01-04-2022</i>	51.78	48.22	31.63	7.87	0.00	0.00
Start of Water Year <i>09-28-2021</i>	98.41	1.59	0.00	0.00	0.00	0.00
One Year Ago <i>08-03-2021</i>	99.81	0.19	0.00	0.00	0.00	0.00

Intensity:

- None
- D0 Abnormally Dry
- D1 Moderate Drought
- D2 Severe Drought
- D3 Extreme Drought
- D4 Exceptional Drought

The Drought Monitor focuses on broad-scale conditions. Local conditions may vary. For more information on the Drought Monitor, go to <https://droughtmonitor.unl.edu/About.aspx>

Author:

Curtis Riganti
National Drought Mitigation Center



droughtmonitor.unl.edu