



Texas Crop Progress and Condition

Cooperating with Texas Department of Agriculture, Texas AgriLife Extension Services, and the National Weather Service
Texas Field Office · Post Office Box 70 · Austin, Texas 78767 800-626-3142 www.nass.usda.gov/tx

WEEKLY SUMMARY FOR JUNE 27 – JULY 3

ISSUE TX-CW2611

RELEASED JULY 5, 2011

| Crop Condition | | | | | | | |
|-------------------|--------------------|------|------|------|-----------|-------|------|
| Crop | Percent of Acreage | | | | | Index | |
| | Excellent | Good | Fair | Poor | Very Poor | 2011 | 2010 |
| Corn | 1 | 16 | 30 | 27 | 26 | 42 | 78 |
| Cotton | 0 | 14 | 29 | 23 | 34 | 37 | 78 |
| Peanuts | 0 | 24 | 45 | 29 | 2 | 56 | 85 |
| Rice | 10 | 40 | 50 | 0 | 0 | 77 | 86 |
| Sorghum | 1 | 26 | 33 | 24 | 16 | 51 | 84 |
| Soybeans | 0 | 26 | 34 | 28 | 12 | 51 | 71 |
| Wheat | 0 | 9 | 14 | 23 | 54 | 25 | 77 |
| Oats | 0 | 7 | 21 | 20 | 52 | 27 | 83 |
| Range and Pasture | 0 | 3 | 13 | 26 | 58 | - | - |

* The formula for the condition index is $I = (5V + 25P + 60F + 90G + 110E)/100$ where I = crop condition index and V, P, F, G, E = percentage of crop rated very poor, poor, fair, good, excellent.

| Texas Precipitation | | | | | |
|---|---------------------------------------|-----------------------------------|-------------------------------------|----------------------------|--|
| National Weather Service Climatic Divisions * | Inches of Accumulation ** | | | | Percent |
| | Previous Week Jun 27 – Jul 3, 2011 | Month-to-Date Jun 1 - 30, 2011 | Year-to-Date Jan 1 – Jul 3, 2011 | Annual Normal 1971-2000 | Normal Previous Three Months (Mar - May) |
| High Plains | 0.26 | 0.17 | 0.86 | 19.64 | 7 |
| Low Rolling Plains | 0.04 | 0.13 | 0.66 | 24.51 | 7 |
| North Central Texas | 0.00 | 0.56 | 4.40 | 35.23 | 26 |
| East Texas | 0.13 | 0.76 | 5.24 | 48.08 | 20 |
| Trans-Pecos | 0.00 | 0.08 | 0.16 | 13.19 | 2 |
| Edwards Plateau | 0.01 | 0.23 | 1.60 | 24.73 | 13 |
| South Central Texas | 0.04 | 0.53 | 2.42 | 36.21 | 8 |
| Upper Coast | 0.04 | 0.94 | 4.46 | 50.31 | 12 |
| South Texas | 0.33 | 0.33 | 1.22 | 24.08 | 4 |
| Lower Valley | 1.41 | 1.84 | 2.25 | 25.43 | 0 |

*High Plains: 1-N, 1-S; Low Rolling Plains: 2-N, 2-S; North Central Texas: 3, 4; East Texas: 5-N, 5-S. Trans-Pecos: 6; Edwards Plateau: 7; South Central Texas: 8-N, 8-S; Upper Coast: 9; South Texas: 10-N; Lower Valley: 10-S.

**Average of all stations reporting precipitation data. For more information, please visit the following web sites: water.weather.gov and www.drought.unl.edu/dm/monitor.html.

| Top Soil Moisture by District | | | | | | | | | | | | | | | |
|-------------------------------|--------------------|-----|-----|-----|----|----|-----|-----|----|----|-----|-----|----|------|------|
| Condition | Percent of Acreage | | | | | | | | | | | | | | |
| | 1-N | 1-S | 2-N | 2-S | 3 | 4 | 5-N | 5-S | 6 | 7 | 8-N | 8-S | 9 | 10-N | 10-S |
| Very Short | 91 | 92 | 95 | 83 | 68 | 57 | 52 | 83 | 92 | 85 | 64 | 53 | 79 | 59 | 18 |
| Short | 8 | 5 | 5 | 3 | 30 | 40 | 46 | 16 | 8 | 14 | 34 | 37 | 14 | 36 | 10 |
| Adequate | 1 | 3 | 0 | 14 | 2 | 3 | 2 | 1 | 0 | 1 | 2 | 10 | 5 | 5 | 31 |
| Surplus | 0 | 0 | 0 | 0 | 0 | 0 | 0 | 0 | 0 | 0 | 0 | 0 | 2 | 0 | 41 |

Weekly Summary

Areas of the Lower Valley received up to 3 inches of rainfall, the Northern Plains and North East Texas received up to 2 inches of rainfall, while the rest of the state observed scattered showers.

Small Grains: Irrigated wheat harvest neared completion in areas of the Northern High Plains, while dry-land wheat harvest continued to suffer due to drought conditions.

Row Crops: In areas of the Northern High Plains, corn was stressed due to hot and windy conditions. Germination and emergence of recently planted dry-land cotton suffered in areas of the

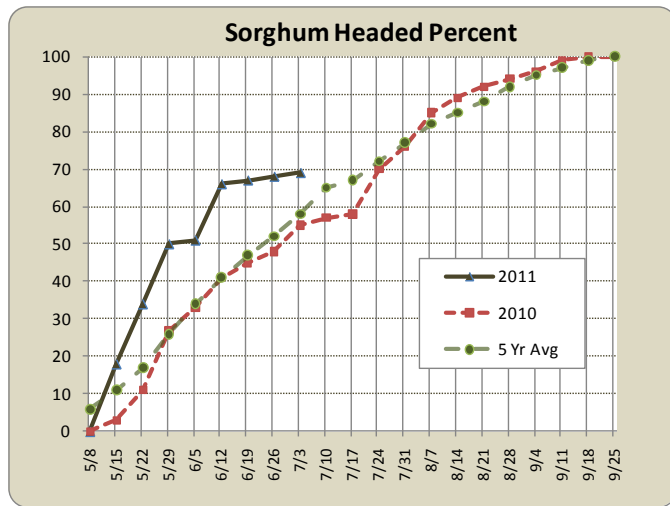
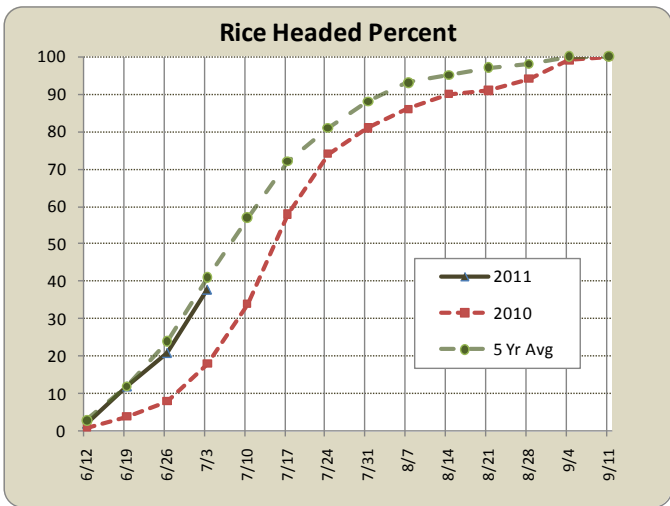
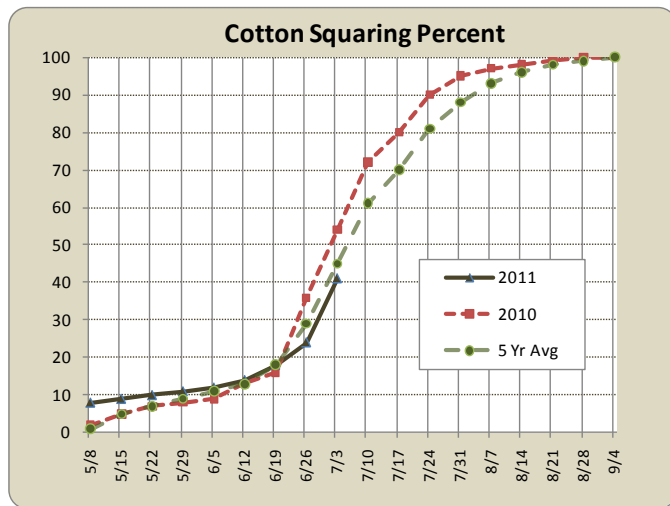
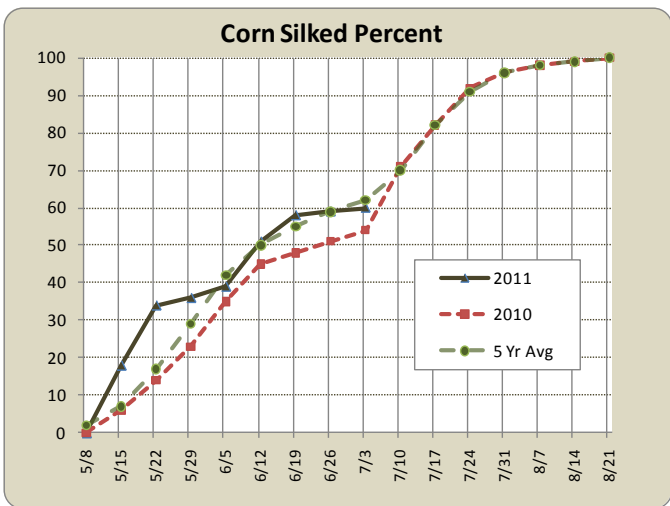
Plains due to drought conditions. Irrigated corn suffered in areas of the Southern High Plains due to declining water supplies. The peanut crop progressed well in the Cross Timbers and South Texas but was in need of rain. In areas of North East Texas, corn was harvested for silage. Rice suffered due to very low moisture as producers prepared to harvest rice in the Upper Coast. Cotton squared in the Trans-Pecos and made good progress in South Texas due to recent rainfall. Corn and sorghum harvests were delayed due to rain showers in the Lower Valley.

| Crop Progress | | | | | |
|---------------|---------------|--------------------|-----------|------|----------|
| Crop | Stage | Percent of Acreage | | | |
| | | Current | Prev Week | 2010 | 5 Yr Avg |
| Corn | Silked | 60 | 59 | 54 | 62 |
| | Dough | 47 | 41 | 46 | 49 |
| | Dent | 39 | 32 | 29 | 33 |
| | Mature | 13 | 0 | 5 | 9 |
| Cotton | Planted | 100 | 99 | 100 | 100 |
| | Squaring | 41 | 24 | 54 | 45 |
| | Setting bolls | 14 | 13 | 11 | 15 |
| Oats | Harvested | 93 | 92 | 93 | 94 |
| Peanuts | Planted | 100 | 99 | 100 | 100 |
| | Pegging | 10 | 6 | 34 | 23 |
| Rice | Headed | 38 | 21 | 18 | 41 |
| Sorghum | Planted | 95 | 92 | 98 | 97 |
| | Headed | 69 | 68 | 55 | 58 |
| | Coloring | 62 | 61 | 44 | 45 |
| | Mature | 51 | 46 | 17 | 25 |
| | Harvested | 22 | 0 | 1 | 8 |
| Soybeans | Emerged | 100 | 99 | 100 | 99 |
| | Blooming | 52 | 42 | 60 | 57 |
| Sunflowers | Planted | 89 | 78 | 92 | 77 |
| Winter Wheat | Harvested | 98 | 89 | 75 | 83 |

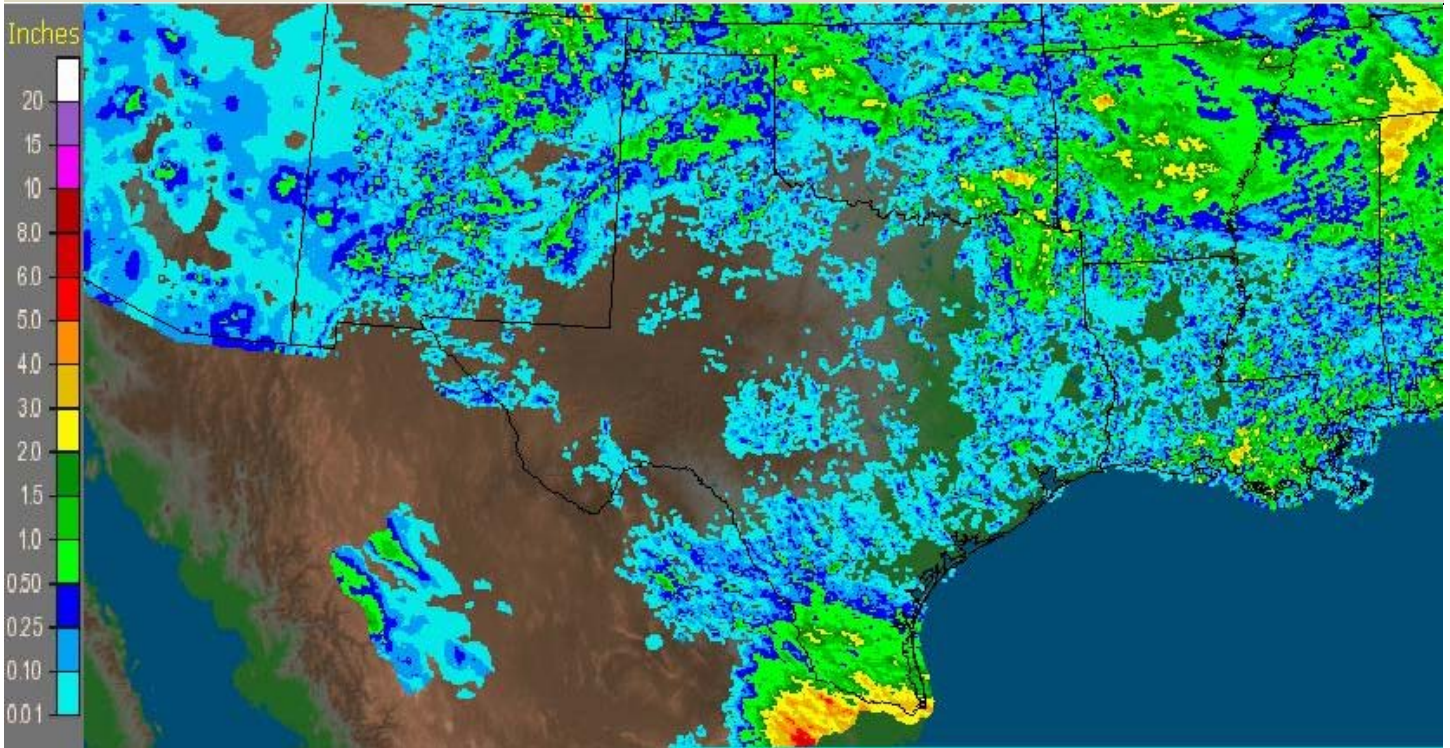
Visit our web site to view the crop progress regional maps, available at www.nass.usda.gov/Statistics_by_State/Texas/Publications/Crop_Progress_&_Condition/maps/.

Fruit, Vegetable and Specialty Crop: Pecans were stressed due to drought conditions in the Cross Timbers and the Edwards Plateau. Blackberry and Blueberry harvests progressed well; however, the peach crop suffered in areas of North East Texas.

Livestock, Range and Pasture: Producers continued to supplement and feed hay to livestock and prepared to wean calves due to low hay supplies and rising input costs in areas of the Plains, the Cross Timbers, East Texas, and the Upper Coast. Livestock tanks and ponds continued to recede in areas of the Plains, the Trans-Pecos, the Blacklands, and the Edwards Plateau. Hay production suffered due to drought conditions in areas of the Plains and East Texas. Grasshoppers continued to damage crops and rangeland in areas of the Cross Timbers, the Blacklands, and North East Texas. Summer grasses were short and contained little nutritional value due to high temperatures and low soil moisture across the state. The risk of wildfires remained high due to drought conditions in many areas of the state.



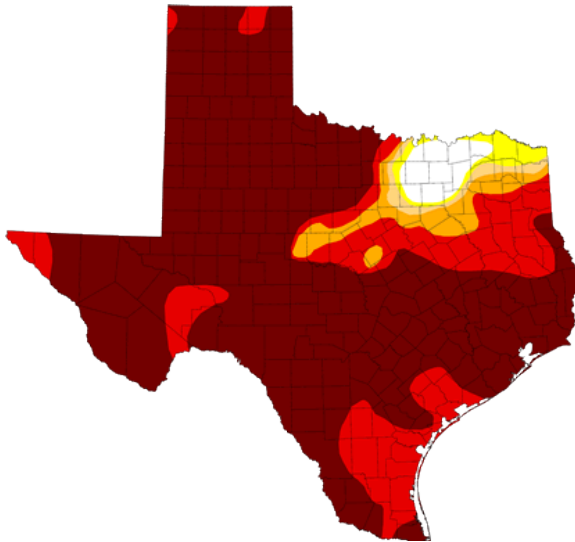
Seven Day Observed Regional Precipitation, July 4, 2011



Source: National Weather Service, www.nws.noaa.gov

Drought Monitor

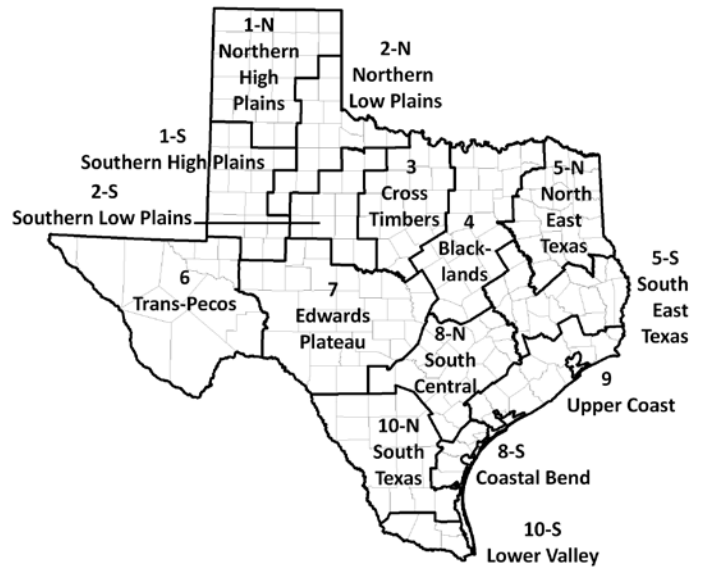
As of 6/28/2011, 7:00 am EST



Intensity:



Texas Agricultural Districts



Source: National Drought Mitigation Center, <http://drought.unl.edu/dm>, a partnership with USDA, U.S. Department of Commerce/NOAA.