



Texas Crop Progress and Condition

Texas Field Office · Post Office Box 70 · Austin, Texas 78767 · 800-626-3142 · www.nass.usda.gov/tx

WEEKLY SUMMARY FOR DEC 26 – JAN 1

ISSUE TX-CW0112

RELEASED JANUARY 3, 2012

| Crop Condition | | | | | | | |
|-------------------|--------------------|------|------|------|-----------|-------|------|
| Crop | Percent of Acreage | | | | | Index | |
| | Excellent | Good | Fair | Poor | Very Poor | 2012 | 2011 |
| Cotton | 0 | 12 | 25 | 25 | 38 | 34 | 34 |
| Wheat | 3 | 22 | 37 | 23 | 15 | 52 | 47 |
| Oats | 3 | 24 | 42 | 13 | 18 | 54 | 35 |
| Range and Pasture | 0 | 6 | 14 | 33 | 47 | - | - |

* The formula for the condition index is $I = (5V + 25P + 60F + 90G + 110E)/100$ where I = crop condition index and V, P, F, G, E = percentage of crop rated very poor, poor, fair, good, excellent.

| Texas Precipitation | | | | | |
|---|--------------------------------|----------------------------------|-------------------------------------|-------------------------|--|
| National Weather Service Climatic Divisions * | Inches of Accumulation ** | | | | Percent |
| | Previous Week (Dec 26 – Jan 1) | Month-to-Date (Dec 1 - 31, 2011) | Year-to-Date (Jan 1 – Dec 31, 2011) | Annual Normal 1971-2000 | Normal Previous Three Months (Sep - Nov) |
| High Plains | 0.00 | 0.13 | 1.99 | 19.64 | 9 |
| Low Rolling Plains | 0.00 | 0.06 | 1.75 | 24.51 | 12 |
| North Central Texas | 0.00 | 0.24 | 6.10 | 35.23 | 14 |
| East Texas | 0.02 | 0.49 | 7.81 | 48.08 | 10 |
| Trans-Pecos | 0.00 | 0.02 | 0.64 | 13.19 | 4 |
| Edwards Plateau | 0.00 | 0.07 | 2.97 | 24.73 | 12 |
| South Central Texas | 0.00 | 0.24 | 3.59 | 36.21 | 7 |
| Upper Coast | 0.00 | 0.36 | 7.87 | 50.31 | 7 |
| South Texas | 0.00 | 0.21 | 2.19 | 24.08 | 7 |
| Lower Valley | 0.00 | 0.13 | 2.65 | 25.43 | 2 |

*High Plains: 1-N, 1-S; Low Rolling Plains: 2-N, 2-S; North Central Texas: 3, 4; East Texas: 5-N, 5-S. Trans-Pecos: 6; Edwards Plateau: 7; South Central Texas: 8-N, 8-S; Upper Coast: 9; South Texas: 10-N; Lower Valley: 10-S.

**Average of all stations reporting precipitation data. For more information, please visit the following web sites: water.weather.gov and www.drought.unl.edu/dm/monitor.html.

| Top Soil Moisture by District | | | | | | | | | | | | | | | |
|-------------------------------|--------------------|-----|-----|-----|----|----|-----|-----|----|----|-----|-----|----|------|------|
| Condition | Percent of Acreage | | | | | | | | | | | | | | |
| | 1-N | 1-S | 2-N | 2-S | 3 | 4 | 5-N | 5-S | 6 | 7 | 8-N | 8-S | 9 | 10-N | 10-S |
| Very Short | 53 | 66 | 14 | 45 | 9 | 12 | 18 | 23 | 63 | 47 | 17 | 85 | 33 | 31 | 36 |
| Short | 33 | 20 | 42 | 42 | 40 | 40 | 20 | 35 | 19 | 38 | 33 | 13 | 43 | 29 | 59 |
| Adequate | 14 | 13 | 44 | 13 | 50 | 46 | 61 | 41 | 17 | 15 | 50 | 2 | 21 | 40 | 5 |
| Surplus | 0 | 1 | 0 | 0 | 1 | 2 | 1 | 1 | 1 | 0 | 0 | 0 | 3 | 0 | 0 |

Weekly Summary

Areas of East Texas and the Lower Valley received up to 0.25 inches of rainfall, while the rest of the state observed little to no rainfall.

| Crop Progress | | | | | |
|---------------|-----------|--------------------|-----------|------|----------|
| Crop | Stage | Percent of Acreage | | | |
| | | Current | Prev Week | 2011 | 5 Yr Avg |
| Cotton | Harvested | 98 | - | 98 | 95 |
| Winter Wheat | Emerged | 82 | - | 92 | 91 |
| Oats | Emerged | 94 | - | 88 | 79 |
| Pecans | Harvested | 98 | - | 98 | 95 |

Visit our web site to view the crop progress regional maps, available at www.nass.usda.gov/Statistics_by_State/Texas/Publications/Crop_Progress_&_Condition/maps/.

Small Grains:

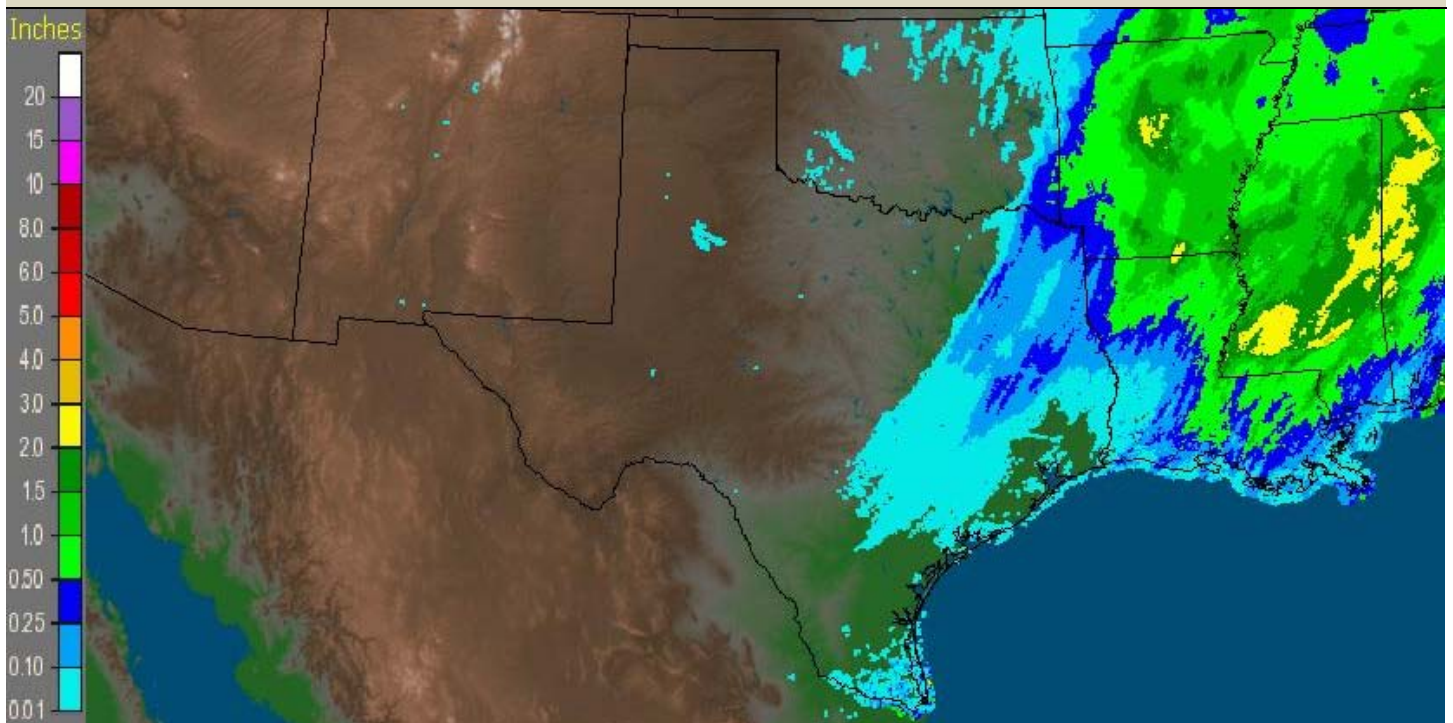
In northern areas of the state, dry land winter wheat progressed well due to recent moisture in areas of the Northern High Plains. Winter wheat in areas of the Cross Timbers progressed well due to warmer temperatures. Emerging winter wheat and oats slowed due to a recent cold front in areas of the Blacklands. Winter wheat and oats progressed well in areas of the South Texas due to timely rain showers and replenished soil moisture.

Row Crops: Cotton harvest was virtually complete in areas of the Northern High Plains.

Fruit, Vegetable and Specialty Crop: Cabbage and spinach progressed well due to recent rain showers while producers benefited from reduced irrigation costs in areas of South Texas. Spinach harvest resumed due to recent dry open weather in southern areas of the state.

Livestock, Range and Pasture: Across the state, some cattle were released on wheat pastures due to low hay supplies. Stock tank levels improved due to recent rain showers; however, more moisture was needed. Cool season grasses continued to progress well due to earlier rain showers and recent warmer weather.

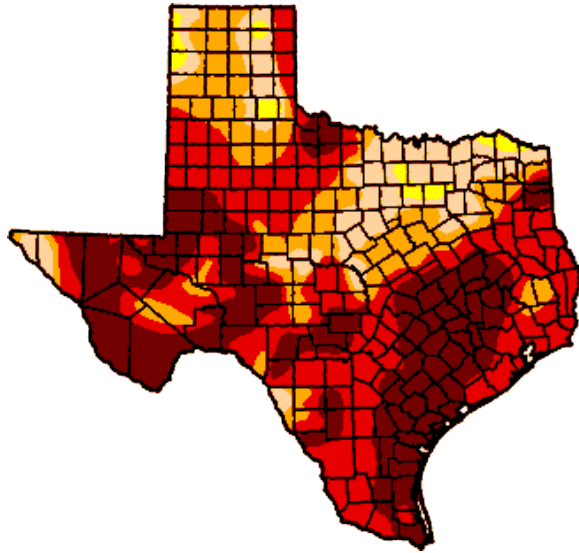
Seven Day Observed Regional Precipitation, January 2, 2012



Source: National Weather Service, www.nws.noaa.gov

Drought Monitor

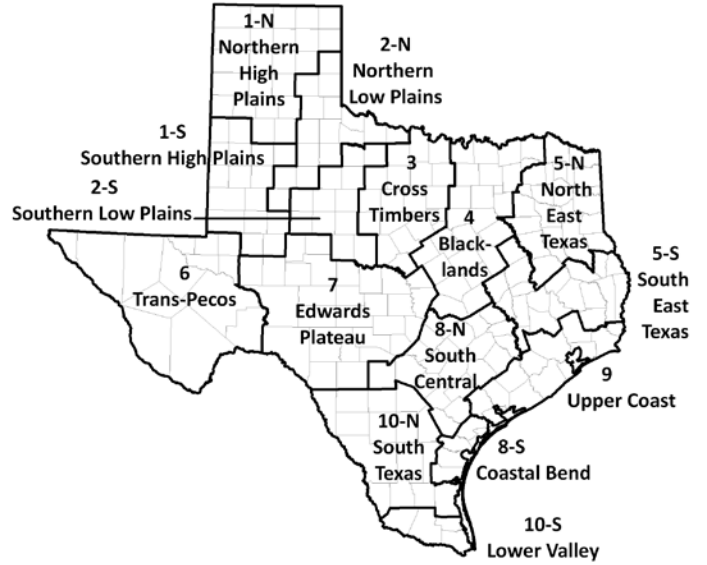
As of 12/27/2011, 7:00 am EST



Intensity:



Texas Agricultural Districts



Source: National Drought Mitigation Center, <http://drought.unl.edu/dm>, a partnership with USDA, U.S. Department of Commerce/NOAA.