



# Texas Crop Progress and Condition

Texas Field Office · Post Office Box 70 · Austin, Texas 78767 · 800-626-3142 · [www.nass.usda.gov/tx](http://www.nass.usda.gov/tx)

**WEEKLY SUMMARY FOR JUNE 4 – 10**

**ISSUE TX-CW2412**

**RELEASED JUNE 11, 2012**

## Summary

Most areas of Texas received rainfall last week. Parts of North and East Texas and the Panhandle received 3 inches or more for the week. The rest of the state observed scattered showers. Parts of South Texas and the Trans-Pecos received no measureable rainfall.

**Small Grains:** Wheat and oat harvest across most of the state continued last week. Precipitation slowed small grain harvest in North East Texas. Late harvesting continued where moisture levels allowed farmers to return to the fields. In the High Plains, haying and silage harvest of small grains neared completion.

**Row Crops:** Cotton planting continued across the Panhandle and West Texas. Hail damage was reported on some cotton acres in the High Plains. Overall, row crops progressed well across the state due to recent precipitation. However in the High Plains, cotton remained in need of additional moisture. In parts of the Plains and South Texas, irrigation was active. Peanut planting continued in South Texas.

**Fruit, Vegetable, and Specialty Crops:** Fruit and vegetable harvest continued in East Texas with many producers selling at local markets. Disease and insect damage reports increased for some vegetables. In North Texas, peaches progressed well with some varieties beginning to ripen. In South Texas, melons made good progress as potato and onion harvest continued and cucumber harvest was wrapping up.

**Livestock, Range, and Pasture:** Range and pastureland improved in areas that received significant rainfall, although growth of brush and weeds also increased. Many pastures remained thinner than normal due to previous drought conditions. In areas of the Trans-Pecos, hot, dry conditions persisted, impeding range and pasture recovery. Some

		Crop Progress			
Crop	Stage	Percent of Acreage			
		Current	Prev Week	2011	5 Yr Avg
Corn	Planted	99	96	100	100
	Emerged	95	90	95	97
	Silked (Tasseled)	53	51	48	47
Cotton	Planted	95	83	91	89
	Squaring	14	11	13	12
	Setting Bolls	8	5	10	4
Peanuts	Planted	94	93	95	94
Rice	Planted	100	99	100	100
	Emerged	98	97	84	95
	Headed	5	2	1	1
Sorghum	Planted	92	91	83	85
	Headed	59	58	62	43
	Coloring	30	20	30	16
Soybeans	Planned	97	96	97	97
	Emerged	96	95	96	94
	Blooming	28	12	32	20
Sunflowers	Planted	89	81	67	54
Winter Wheat	Harvested (Grain)	50	38	40	30
Oats	Harvested (Grain)	84	77	82	72

Visit our web site to view the crop progress regional maps, available at [www.nass.usda.gov/Statistics\\_by\\_State/Texas/Publications/Crop\\_Progress\\_&\\_Condition/maps/](http://www.nass.usda.gov/Statistics_by_State/Texas/Publications/Crop_Progress_&_Condition/maps/).

supplemental feeding of livestock continued in poor and overstocked pastures. Weed control was underway in many areas and grasshoppers were becoming a problem in hay meadows and pastures in North and East Texas.

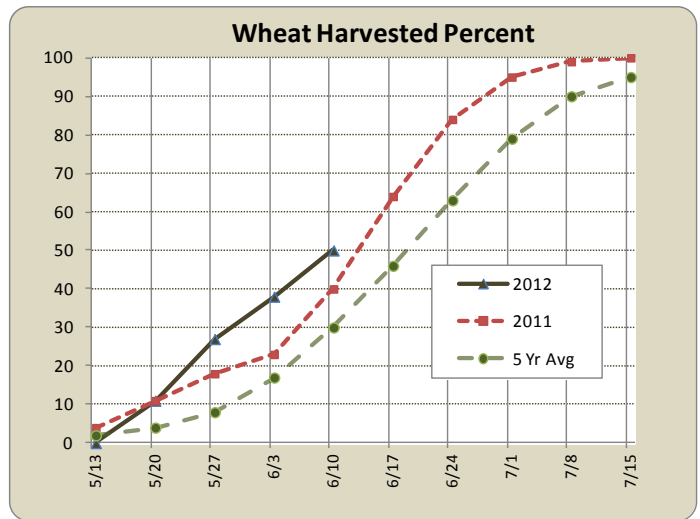
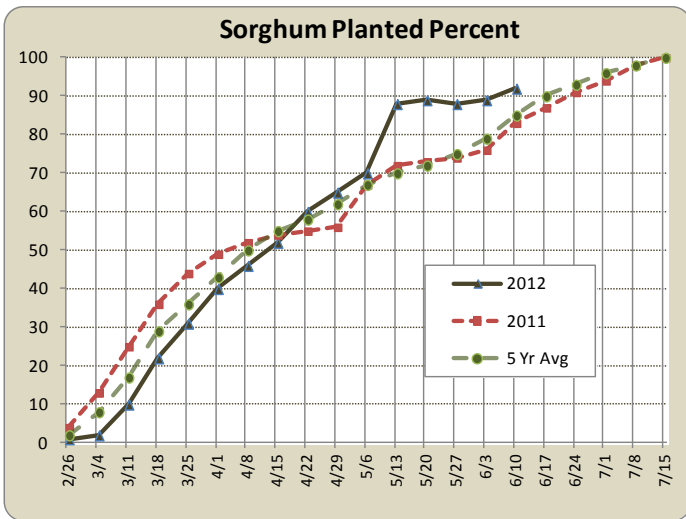
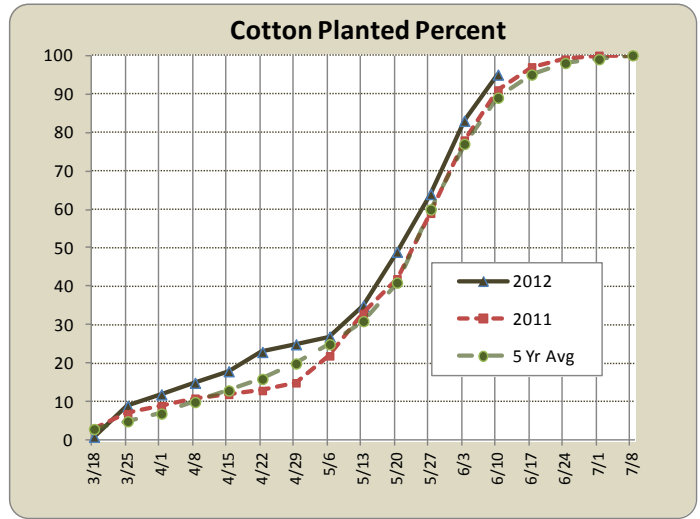
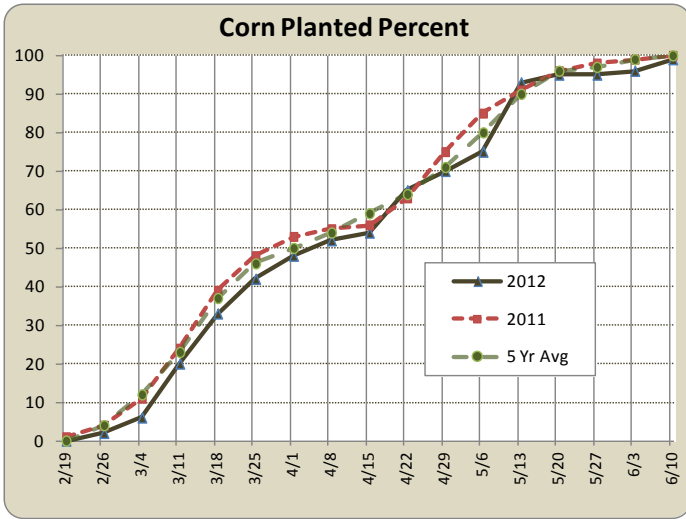
Crop Condition							
Crop	Percent of Acreage					Index	
	Excellent	Good	Fair	Poor	Very Poor	2012	2011
Corn	12	51	29	6	2	78	49
Cotton	10	30	42	14	4	67	45
Peanuts	3	29	68	0	0	70	62
Rice	8	56	31	3	2	79	73
Sorghum	9	50	26	10	5	73	51
Soybeans	8	39	49	2	2	74	56
Wheat	11	25	31	19	14	59	25
Oats	26	35	28	7	4	84	27
Range and Pasture	2	19	41	25	13	--	--

\* The formula for the condition index is  $I = (5V + 25P + 60F + 90G + 110E)/100$  where I = crop condition index and V, P, F, G, E = percentage of crop rated very poor, poor, fair, good, excellent.

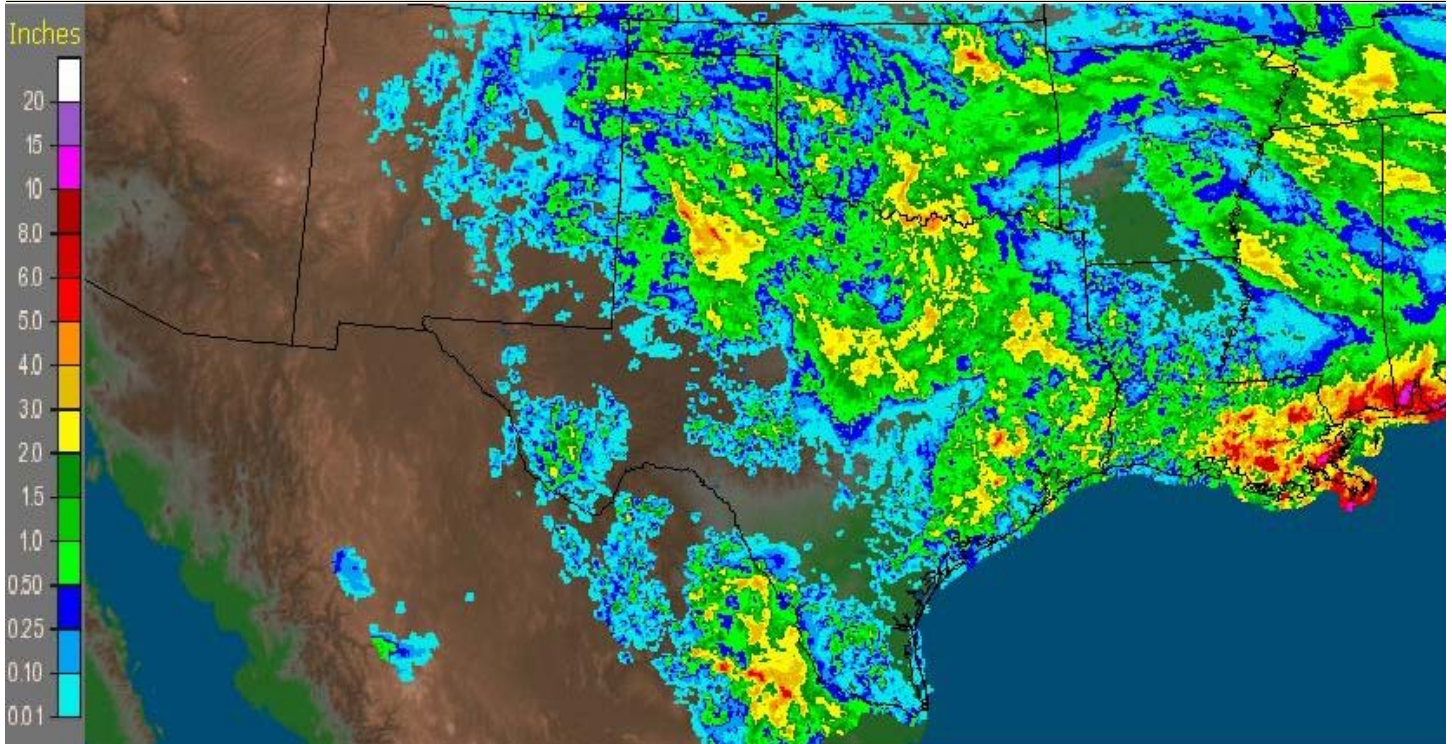
Top Soil Moisture by District															
Condition	Percent of Acreage														
	1-N	1-S	2-N	2-S	3	4	5-N	5-S	6	7	8-N	8-S	9	10-N	10-S
Very Short	38	40	41	10	9	8	4	11	46	14	4	47	17	34	20
Short	32	42	25	42	58	32	60	65	41	45	59	43	34	48	55
Adequate	26	15	34	34	33	53	32	22	13	37	33	10	45	17	25
Surplus	4	3	0	14	0	7	4	2	0	4	4	0	4	1	0

Texas Precipitation					
National Weather Service Climatic Divisions *	Inches of Accumulation **				Percent
	Previous Week (June 4 – 10, 2012)	Month-to-Date (June 1 – 10, 2012)	Year-to-Date (Jan 1 – Jun 10, 2012)	Annual Normal 1971-2000	Normal Previous Three Months (March - May)
High Plains	0.13	0.17	0.82	19.64	10
Low Rolling Plains	0.02	0.23	1.31	24.51	11
North Central Texas	0.21	0.23	2.74	35.23	13
East Texas	0.17	0.17	3.72	48.08	15
Trans-Pecos	0.01	0.02	0.57	13.19	25
Edwards Plateau	0.03	0.06	1.77	24.73	18
South Central Texas	0.06	0.06	2.17	36.21	14
Upper Coast	0.15	0.15	3.72	50.31	18
South Texas	0.00	0.02	1.37	24.08	16
Lower Valley	0.00	0.00	1.16	25.43	13

\* High Plains: 1-N, 1-S; Low Rolling Plains: 2-N, 2-S; North Central Texas: 3, 4; East Texas: 5-N, 5-S. Trans-Pecos: 6; Edwards Plateau: 7; South Central Texas: 8-N, 8-S; Upper Coast: 9; South Texas: 10-N; Lower Valley: 10-S. \*\* Average of all stations reporting precipitation data. For more information, please visit the following web sites: <http://water.weather.gov> and <http://droughtmonitor.unl.edu>.



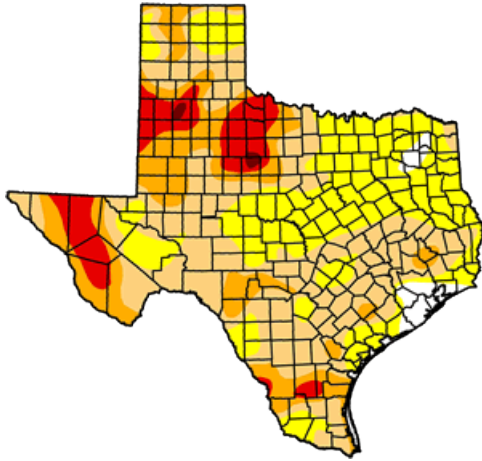
Seven Day Observed Regional Precipitation, June 10, 2012



Source: National Weather Service, [www.nws.noaa.gov](http://www.nws.noaa.gov)

# Drought Monitor

Valid 6/5/2012, 7:00 am EST

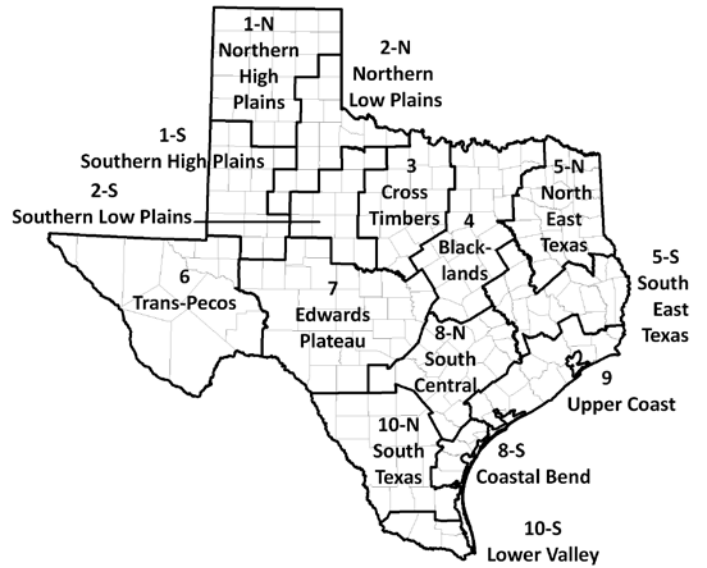


## Intensity:



Source: National Drought Mitigation Center, a partnership with USDA, U.S. Department of Commerce/NOAA, <http://droughtmonitorunl.edu>

# Texas Agricultural Districts



**Coming soon – NASS’s annual June surveys on crops and livestock.** In the first two weeks of June, NASS will survey about 140,000 U.S. producers and visit 42,000 tracts of farm land to collect information. Responses to these surveys provide the foundation for estimates in the upcoming growing year and will first be released in the Acreage and other reports on June 29. Watch for the survey and be sure to respond. ***Your information matters!***