



Texas Crop Progress and Condition

Texas Field Office · Post Office Box 70 · Austin, Texas 78767 · 800-626-3142 · www.nass.usda.gov/tx

WEEKLY SUMMARY FOR OCTOBER 22 – 28

ISSUE TX-CW4412

RELEASED OCTOBER 31, 2012

Summary

Precipitation fell across much of the eastern half of the state last week. Portions of Southeast Texas received up to two inches, while other areas observed only scattered showers. Large parts of West Texas and the Panhandle, however, remained dry.

Small Grains: Winter wheat and oats seeding continued in most areas. Some field preparation was still occurring following row crop harvest. Oats seeding was virtually complete in the Tran-Pecos and the

Edwards Plateau. Small grain emergence was good in many areas, helped by sufficient soil moisture levels. However in the Plains, dry, windy conditions hampered small grain development.

Row Crops: Cotton harvest continued around the state, with many fields defoliated and ready for picking. Some fields were being abandoned and shredded due to poor lint production. Cotton harvest was wrapping up in East and South Texas. Gins were active in many areas. Corn, sorghum, and sunflower harvest continued in the High Plains with corn and sorghum stalks being cut for winter feeding. Soybean harvest continued in the High Plains and Northeast Texas, while peanut harvest was active in both North and South Texas.

Fruit, Vegetable, and Specialty Crops: Pecan harvest was underway in many areas of the state. Harvest was still in the early stages around North Texas, but further along in South Texas. Fall vegetables continued to develop in South Texas with irrigation active on cabbage, cucumbers, onions, and spinach. In the Lower Valley, some vegetable planting was still occurring as harvest of citrus, sugarcane, and late cantaloupe crops continued.

		Crop Progress			
Crop	Stage	Percent of Acreage			
		Current	Prev Week	2011	5 Yr Avg
Corn	Mature	100	99	100	100
	Harvested	96	95	96	91
Cotton	Bolls Opening	95	92	95	91
	Harvested	42	31	44	32
Peanuts	Harvested	80	55	60	55
Sorghum	Coloring	99	98	98	97
	Mature	95	91	91	90
	Harvested	72	67	78	79
Soybeans	Dropping Leave	99	98	97	98
	Harvested	90	89	89	90
Sunflowers	Harvested	72	65	81	66
Winter Wheat	Planted	82	74	71	78
	Emerged	62	51	35	54
Oats	Planted	82	81	66	76
	Emerged	64	63	34	42

Visit our web site to view the crop progress regional maps, available at www.nass.usda.gov/Statistics_by_State/Texas/Publications/Crop_Progress_&_Condition/maps/.

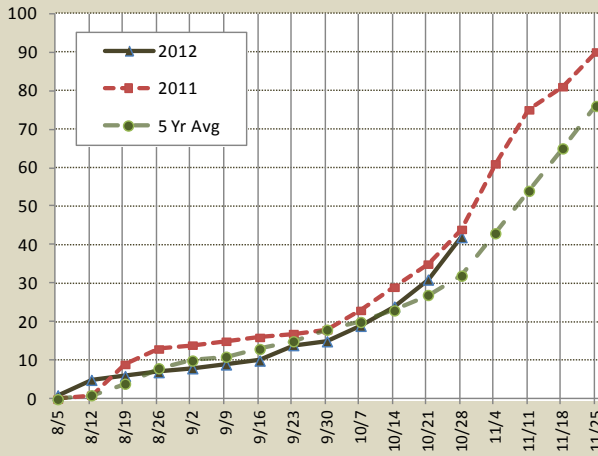
Livestock, Range, and Pasture: Warm-season grass growth slowed with cooler temperatures, while producers continued to plant winter forages. In some areas, pastures had reached grazing stage, allowing livestock producers to reduce supplemental feeding. However in other areas, particularly the Plains and South Texas, drought conditions persisted. Pastures in these drought areas were short on grass and in need of additional moisture, and many livestock producers continued to supplement grazing with hay and range cubes.

Crop Condition							
Crop	Percent of Acreage					Index	
	Excellent	Good	Fair	Poor	Very Poor	2012	2011
Corn	14	37	30	12	7	70	33
Cotton	3	18	31	28	20	46	34
Peanuts	5	47	33	11	4	71	45
Sorghum	16	33	27	15	9	68	49
Soybeans	6	31	50	12	1	68	18
Winter Wheat	4	34	46	13	3	66	49
Oats	5	59	29	6	1	78	--
Range and Pasture	4	21	32	25	18	--	--

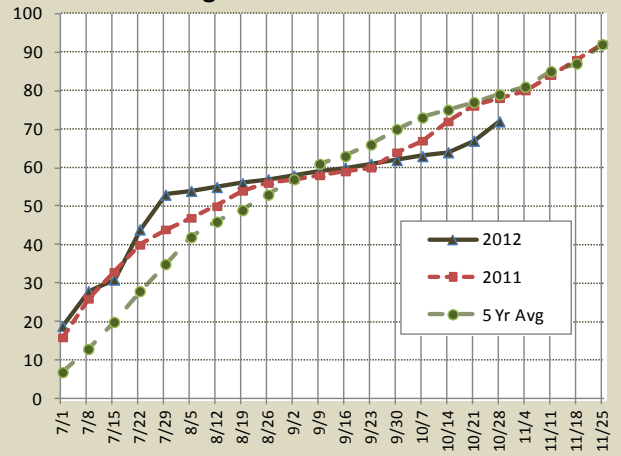
* The formula for the condition index is $I = (5V + 25P + 60F + 90G + 110E)/100$ where I = crop condition index and V, P, F, G, E = percentage of crop rated very poor, poor, fair, good, excellent.

Tops Soil Moisture Condition by District									
District	Percent of Acreage				District	Percent of Acreage			
	Very Short	Short	Adequate	Surplus		Very Short	Short	Adequate	Surplus
1-N	49	44	7	0	6	30	47	23	0
1-S	31	35	34	0	7	15	44	40	1
2-N	20	42	37	1	8-N	6	29	65	0
2-S	10	42	48	0	8-S	37	40	23	0
3	9	50	40	1	9	11	20	64	5
4	14	39	46	1	10-N	22	49	29	0
5-N	5	28	65	2	10-S	52	34	10	4
5-S	5	40	52	3	State	19	40	40	1

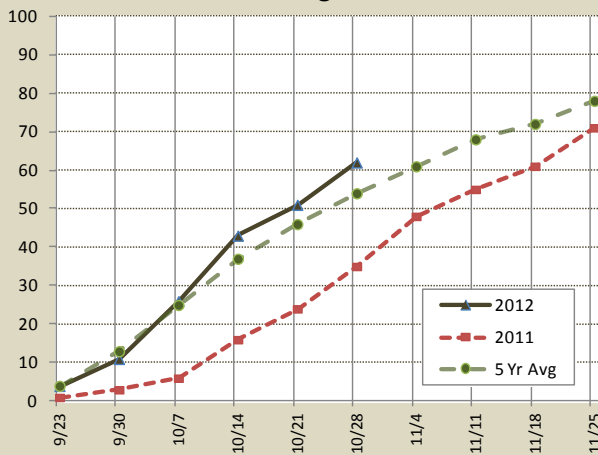
Cotton Harvested Percent



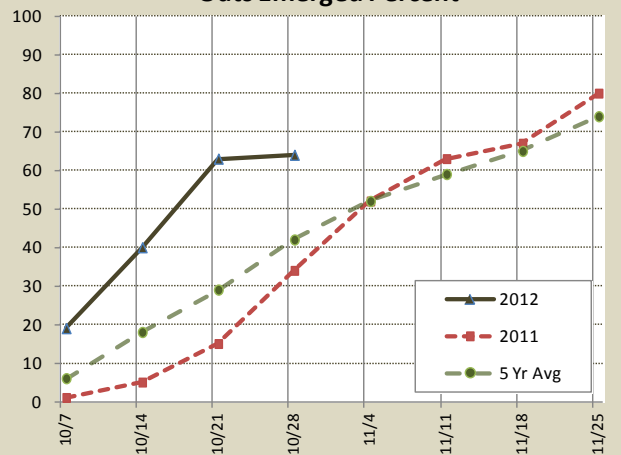
Sorghum Harvested Percent



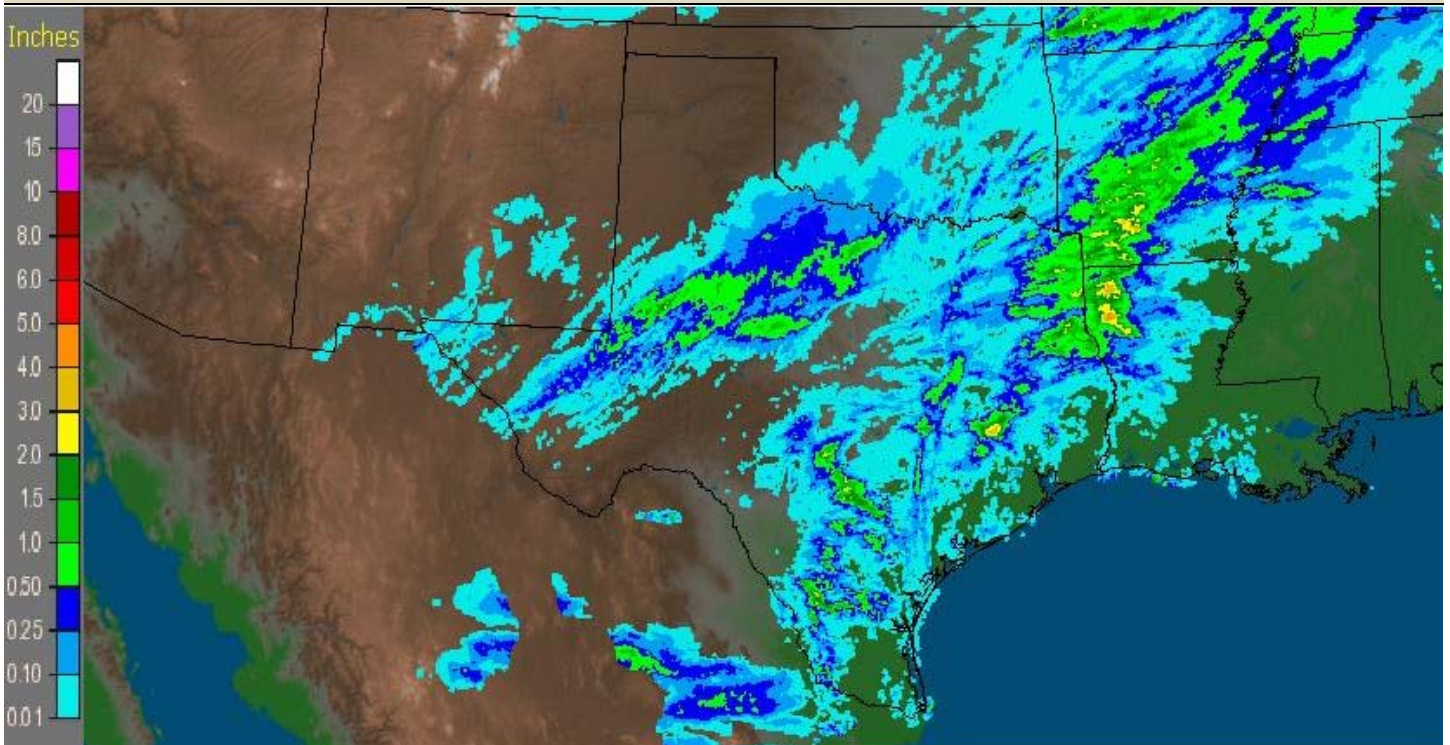
Wheat Emerged Percent



Oats Emerged Percent



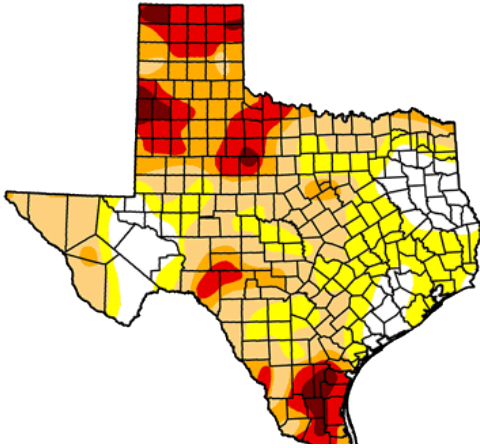
Seven Day Observed Regional Precipitation, October 28, 2012



Source: National Weather Service, www.nws.noaa.gov

Drought Monitor

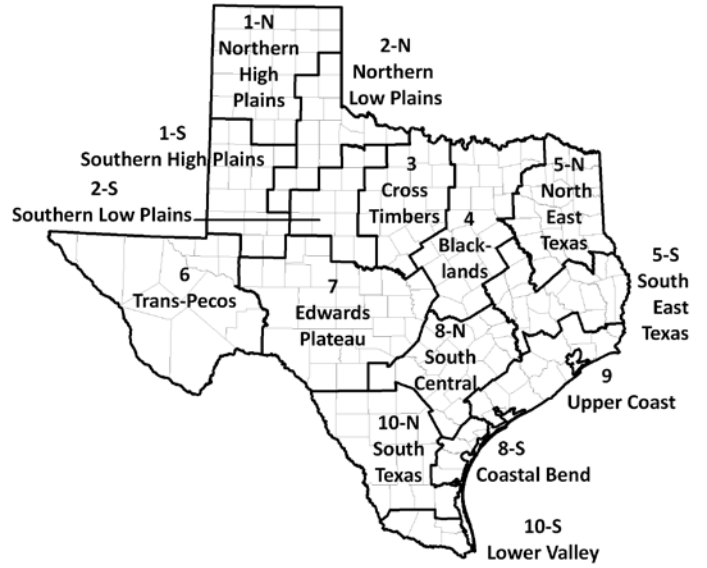
Valid 10/23/2012, 7:00 am EST



Intensity:

- | | |
|---|--|
|  D0 Abnormally Dry |  D3 Drought - Extreme |
|  D1 Drought - Moderate |  D4 Drought - Exceptional |
|  D2 Drought - Severe | |

Texas Agricultural Districts



Source: National Drought Mitigation Center, a partnership with USDA, U.S. Department of Commerce/NOAA, <http://droughtmonitor.unl.edu/>