



Texas Crop Progress and Condition

Texas Field Office · Post Office Box 70 · Austin, Texas 78767 · 800-626-3142 · www.nass.usda.gov/tx

WEEKLY SUMMARY FOR OCT 29 – NOV 4

ISSUE TX-CW4512

RELEASED NOVEMBER 5, 2012

Summary

Some areas of Texas received rainfall last week, while others remained dry. Central and southeastern portions of the state recorded up to 1.5 inches for the week. Other areas experienced scattered showers, with large portions of the Plains, North Texas, and South Texas receiving little or no precipitation.

Small Grains: In most areas, winter wheat and oats were off to a good start but were in need of rainfall to sustain growth. Irrigation was

active in some areas while dry land acres were beginning to show signs of stress. Small grain seeding continued around the state but slowed in some areas due to dry conditions.

Row Crops: Harvest of row crops was complete in many parts of the state and post-harvest field work was underway. Cotton harvest continued in the western half of the state but had wrapped up in East and South Texas. Corn harvest was complete in most areas, while sorghum, soybean, and sunflower harvest continued in parts of the Plains and North Texas.

Fruit, Vegetable, and Specialty Crops: In the High Plains, pumpkin harvest was nearing completion. Some pumpkins still in the field were damaged by frost. Pecan harvest was active around the state, with several reports indicating a fair to good crop. In South Texas, fall cucumbers were nearing full maturity. Spinach and cabbage continued to develop, aided by previous water applications. Planting of both fresh market and processing spinach varieties was ongoing.

Livestock, Range, and Pasture: Planting of cool-season grasses continued. Grasses had emerged in many areas, though some were drying rapidly due to lack of rainfall. Topsoil moisture remained low in many pastures which, combined with cooler temperatures, limited forage growth. Heavy frosts affected forages in areas of North Texas. Livestock condition

Crop Progress						
Crop	Stage	Percent of Acreage				
		Current	Prev Week	2011	5 Yr Avg	
Corn	Harvested	99	96	98	93	
Cotton	Bolls Opening	97	95	96	94	
	Harvested	56	42	61	43	
Peanuts	Harvested	91	80	65	68	
Sorghum	Coloring	100	99	99	99	
	Mature	96	95	92	93	
	Harvested	78	72	80	81	
Soybeans	Dropping Leaves	100	99	98	98	
	Harvested	91	90	92	92	
Sunflowers	Harvested	88	72	83	72	
Winter Wheat	Planted	87	82	80	83	
	Emerged	69	62	48	61	
Oats	Planted	90	82	80	84	
	Emerged	78	64	52	52	

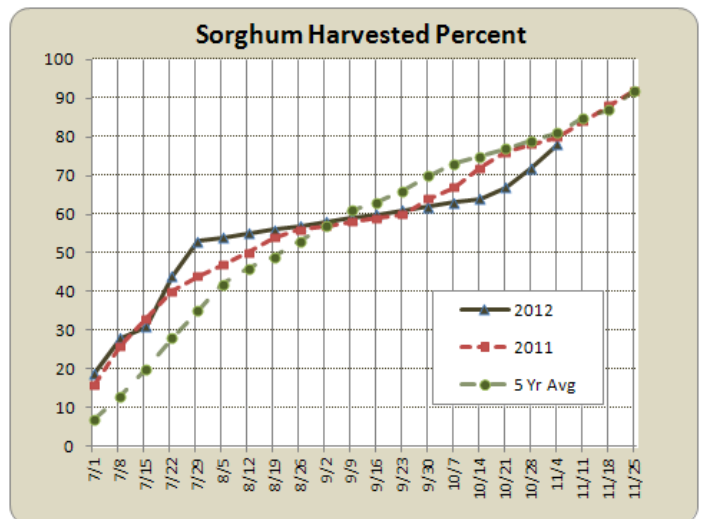
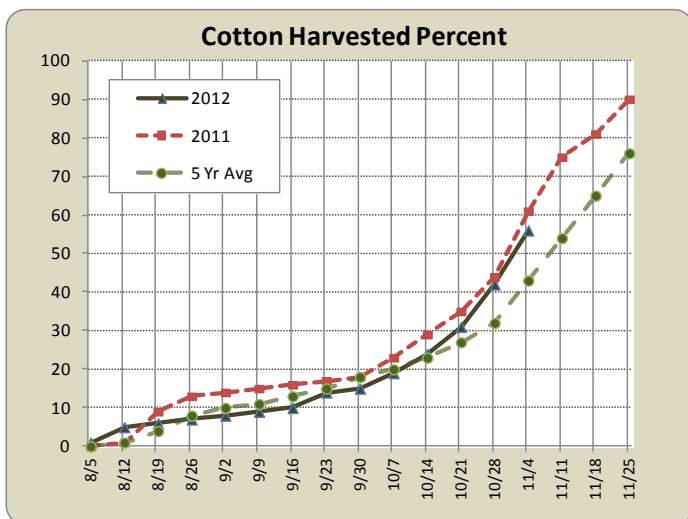
Visit our web site to view the crop progress regional maps, available at www.nass.usda.gov/Statistics_by_State/Texas/Publications/Crop_Progress_&_Condition/maps/.

was generally good with some grazing of stockers occurring on early-planted wheat fields. Fall cattle work was underway as producers continued to sell market-ready calves and cull cows. Some ranchers reported problems with horn flies and heel flies. Many stock tanks and ponds were in need of runoff water.

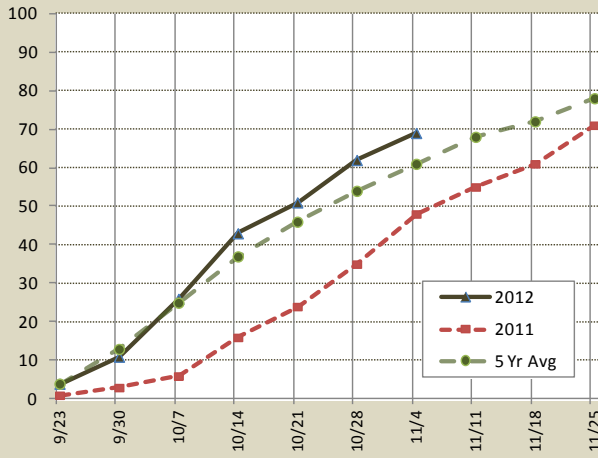
Crop Condition							
Crop	Percent of Acreage					Index	
	Excellent	Good	Fair	Poor	Very Poor	2012	2011
Corn	14	37	30	12	7	70	33
Cotton	3	19	29	27	22	46	34
Peanuts	5	47	33	11	4	71	45
Sorghum	16	33	27	15	9	68	49
Soybeans	6	31	50	12	1	68	18
Wheat	4	30	42	19	5	62	46
Oats	4	38	39	11	8	65	--
Range and Pasture	4	21	34	23	18	--	--

* The formula for the condition index is $I = (5V + 25P + 60F + 90G + 110E)/100$ where I = crop condition index and V, P, F, G, E = percentage of crop rated very poor, poor, fair, good, excellent.

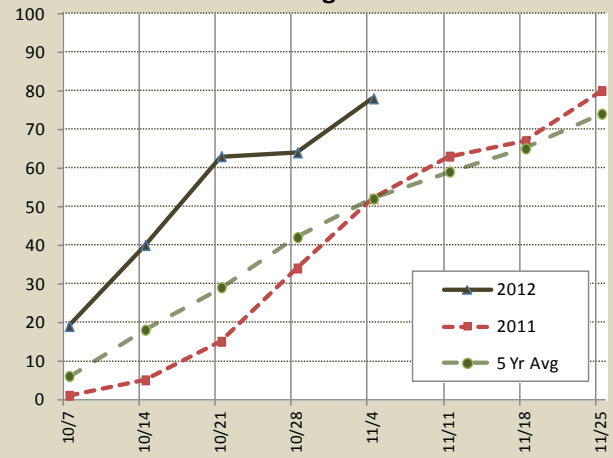
Tops Soil Moisture Condition by District									
District	Percent of Acreage				District	Percent of Acreage			
	Very Short	Short	Adequate	Surplus		Very Short	Short	Adequate	Surplus
1-N	48	45	7	0	6	37	59	4	0
1-S	37	41	22	0	7	13	48	38	1
2-N	35	40	25	0	8-N	4	35	61	0
2-S	13	49	38	0	8-S	38	41	21	0
3	9	50	41	0	9	14	25	57	4
4	18	44	38	0	10-N	26	45	29	0
5-N	8	39	52	1	10-S	50	30	20	0
5-S	6	56	35	3	State	21	44	35	0



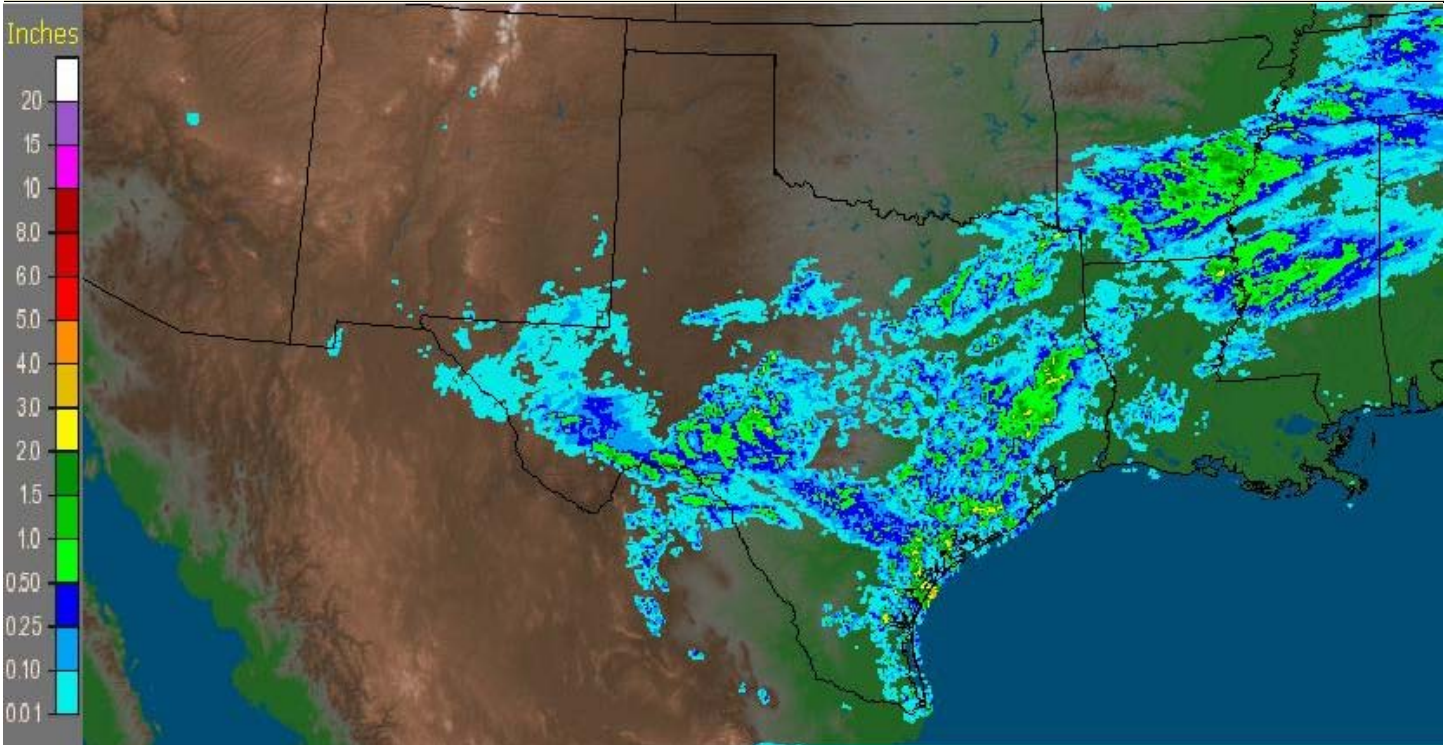
Wheat Emerged Percent



Oats Emerged Percent



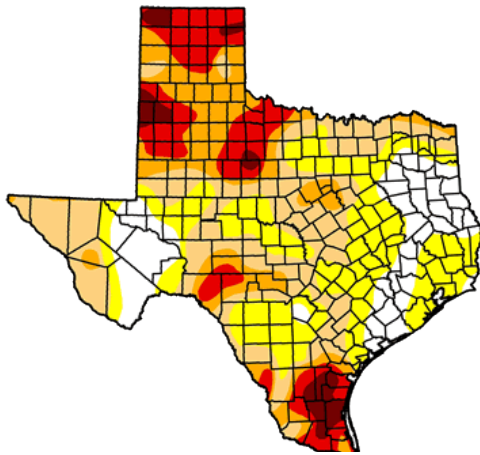
Seven Day Observed Regional Precipitation, November 4, 2012



Source: National Weather Service, www.nws.noaa.gov

Drought Monitor

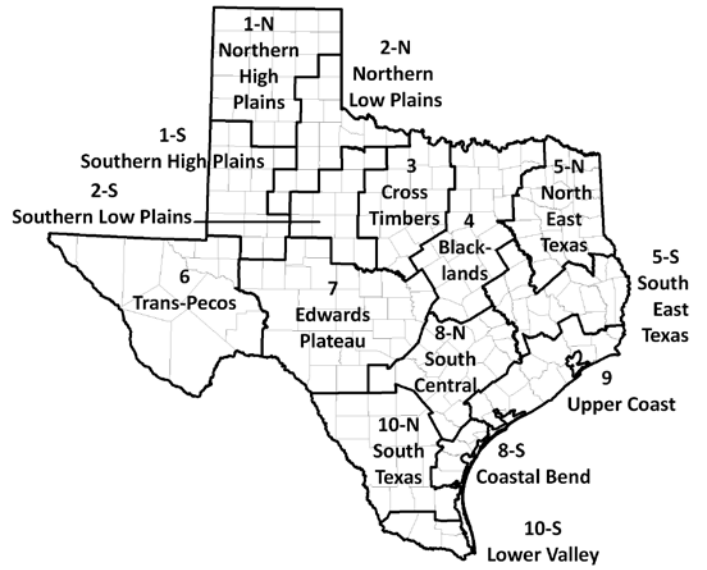
Valid 10/30/2012, 7:00 am EST



Intensity:



Texas Agricultural Districts



Source: National Drought Mitigation Center, a partnership with USDA, U.S. Department of Commerce/NOAA, <http://droughtmonitor.unl.edu/>