



Texas Crop Progress and Condition

Texas Field Office · Post Office Box 70 · Austin, Texas 78767 · 800-626-3142 · www.nass.usda.gov/tx

WEEKLY SUMMARY FOR JULY 1 – 7

ISSUE TX-CW2113

RELEASED JULY 8, 2013

Summary

Rainfall was sparse across the state, with many areas experiencing light showers. Scattered areas of South Texas and the High Plains received just over an inch with very isolated reports of nearly three inches along the Upper Coast.

Small Grains: Small grain harvest neared completion across the state. Producers in the Northern Low Plains were spraying and plowing fields.

Row Crops: Sorghum headed and was coloring in the Blacklands and North East Texas. Early planted grain sorghum was being harvested in the Coastal Bend. Irrigated crops in the Plains progressed well, with cotton fields establishing stands. In the High Plains, dry land cotton struggled, and some producers expected to zero

out the crop. Grasshoppers continued to be problematic in the Blacklands and North East Texas. Sunflower harvest continued in the Edwards Plateau.

Fruit, Vegetable and Specialty Crops: In South Texas, cantaloupes, watermelons, and cabbage were being harvested, and pecan development progressed. North East Texas producers continued to harvest vegetables, and farmers in the Edwards Plateau harvested summer fruit.

Livestock, Range and Pasture: Many pastures across the state continued to be in need of additional moisture, although several areas received adequate rainfall to preserve fair pasture conditions. Hay production continued, especially across the Blacklands, North East Texas, the Upper Coast and South Texas.

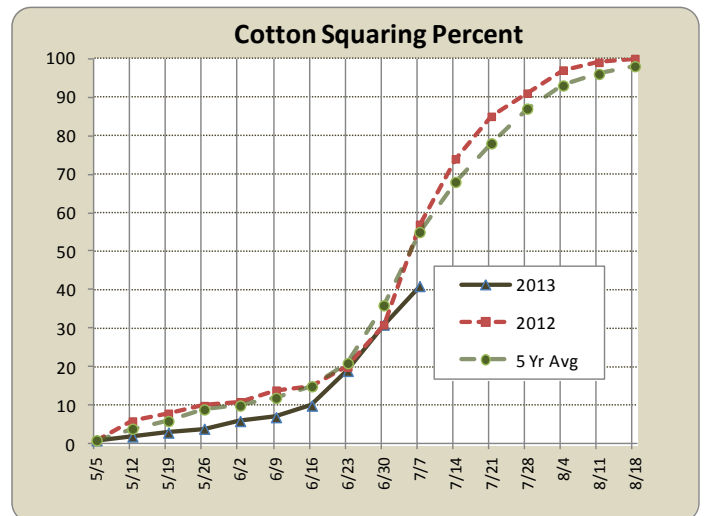
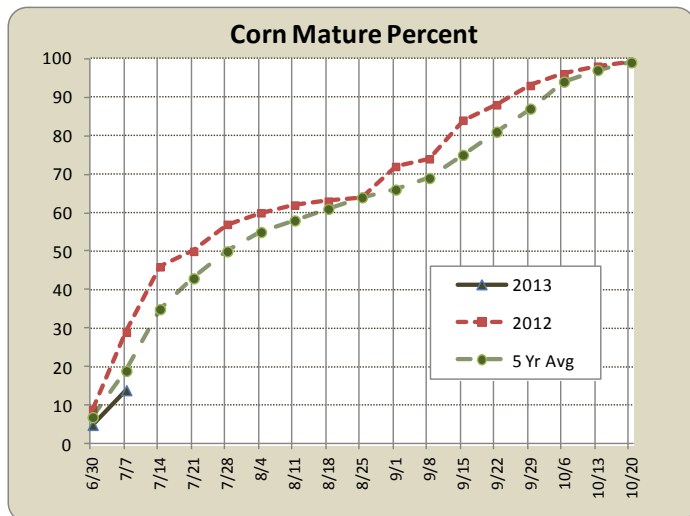
		Crop Progress			
Crop	Stage	Percent of Acreage			
		Current	Prev Week	2012	5 Yr Avg
Corn	Silked (Tasseled)	67	66	77	67
	Dough	51	43	57	52
	Dent	38	24	49	41
	Mature	14	5	29	19
Cotton	Squaring	41	31	57	55
	Setting Bolls	11	9	14	15
Peanuts	Pegging	23	16	29	34
Rice	Emerged	47	41	45	45
Sorghum	Planted	99	98	98	98
	Headed	60	59	63	60
	Coloring	49	45	56	52
	Mature	31	28	47	36
Soybeans	Harvested	18	4	27	16
	Emerged	100	99	100	100
Sunflowers	Blooming	57	45	63	63
	Planted	93	92	97	80
Winter Wheat	Harvested	84	73	99	93
Oats	Headed	100	99	100	100
	Harvested	98	97	98	96

Visit our web site to view the crop progress regional maps, available at www.nass.usda.gov/Statistics_by_State/Texas/Publications/Crop_Progress_&_Condition/maps/.

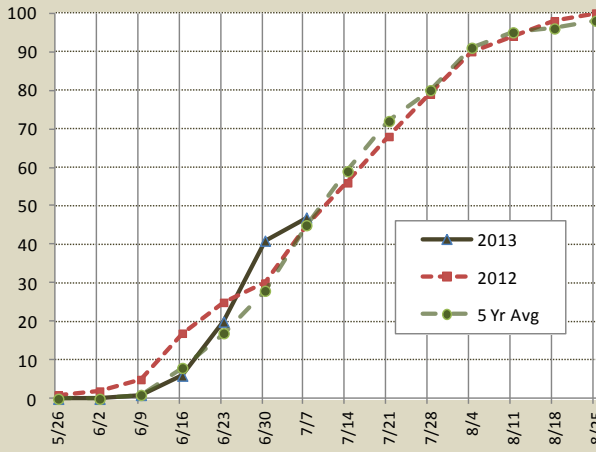
Crop Condition							
Crop	Percent of Acreage					Index	
	Excellent	Good	Fair	Poor	Very Poor	2013	2012
Corn	14	47	31	7	1	78	75
Cotton	4	22	36	23	15	52	62
Peanuts	5	47	37	9	2	72	73
Rice	17	33	47	3	0	90	84
Sorghum	10	33	36	12	9	66	69
Soybeans	5	48	38	7	2	73	71
Wheat	1	7	17	25	50	26	59
Oats	1	22	44	22	11	53	79
Range and Pasture	2	19	31	29	19	--	--

* The formula for the condition index is $I = (5V + 25P + 60F + 90G + 110E)/100$ where I = crop condition index and V, P, F, G, E = percentage of crop rated very poor, poor, fair, good, excellent.

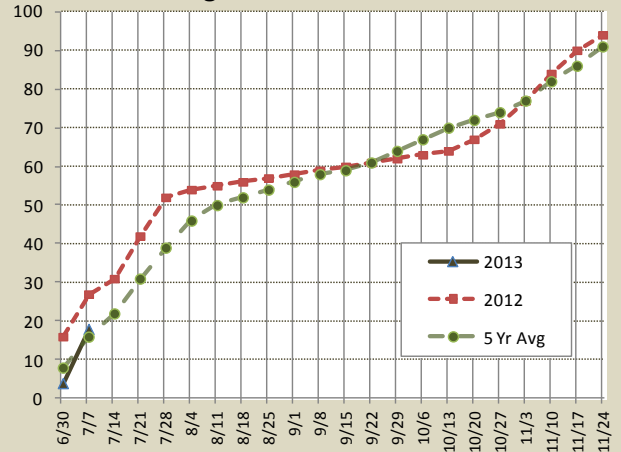
Tops Soil Moisture Condition by District									
District	Percent of Acreage				District	Percent of Acreage			
	Very Short	Short	Adequate	Surplus		Very Short	Short	Adequate	Surplus
1-N	50	40	10	0	6	52	44	4	0
1-S	41	45	14	0	7	30	48	21	1
2-N	25	52	23	0	8-N	21	54	25	0
2-S	25	65	10	0	8-S	80	17	3	0
3	36	50	14	0	9	34	29	34	3
4	23	55	22	0	10-N	8	67	25	0
5-N	31	40	29	0	10-S	3	58	39	0
5-S	18	45	34	3	State	30	49	21	0



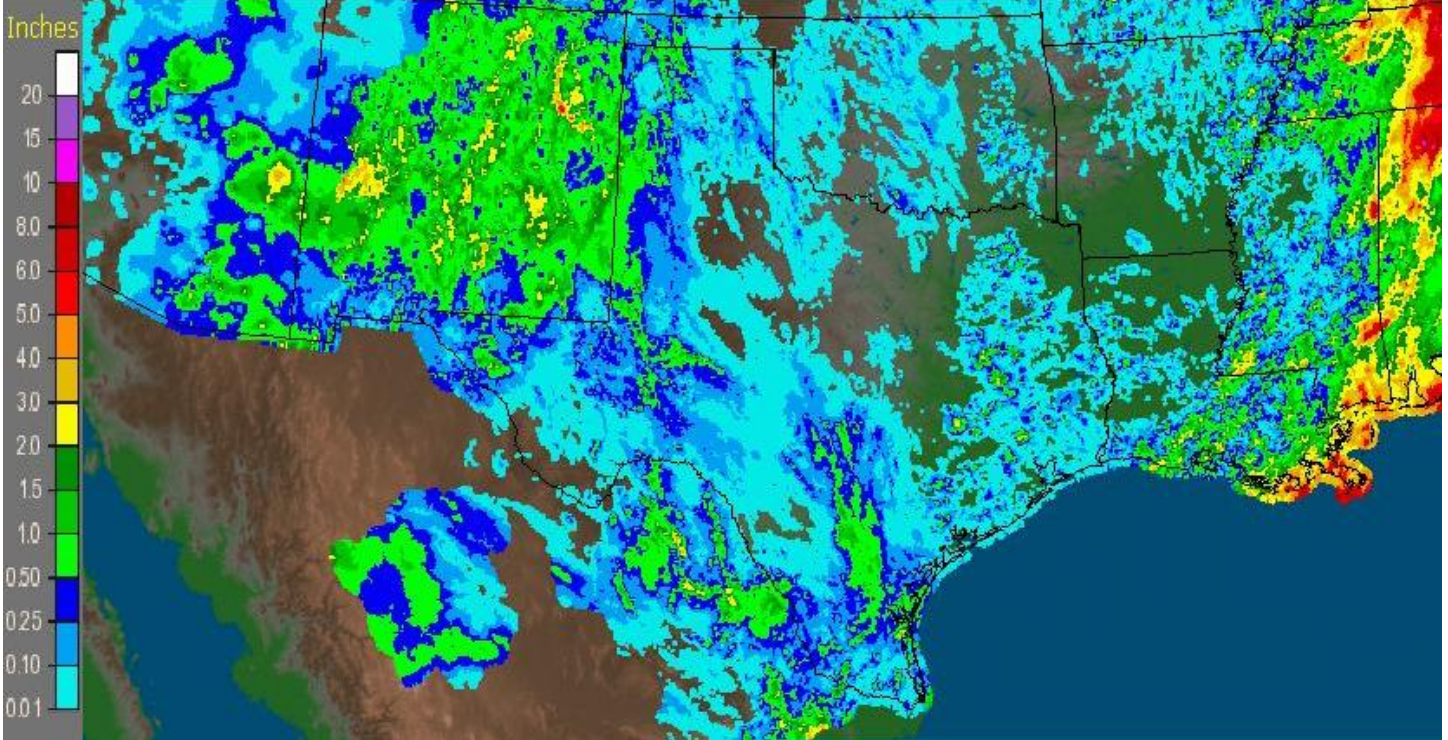
Rice Headed Percent



Sorghum Harvested Percent



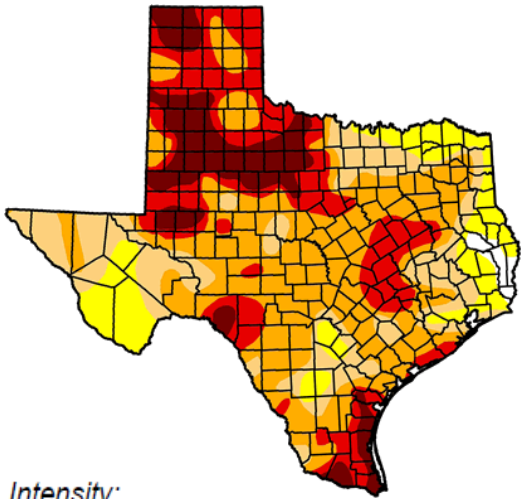
Seven Day Observed Regional Precipitation, July 7, 2013



Source: National Weather Service, www.nws.noaa.gov

Drought Monitor

Valid 7/2/2013, 7:00 am EST



Intensity:

- | | |
|---------------------------------------------------------------------------------------------------------|------------------------------------------------------------------------------------------------------------|
|  D0 Abnormally Dry |  D3 Drought - Extreme |
|  D1 Drought - Moderate |  D4 Drought - Exceptional |
|  D2 Drought - Severe | |

Source: National Drought Mitigation Center, a partnership with USDA, U.S. Department of Commerce/NOAA, <http://droughtmonitor.unl.edu/>

Texas Agricultural Districts

