



Texas Crop Progress and Condition

Texas Field Office, Post Office Box 70, Austin, Texas 78767 · 800-626-3142 · www.nass.usda.gov/tx

WEEKLY SUMMARY FOR MARCH 17 - 23

ISSUE TX-CW1114

RELEASED MARCH 24, 2014

Summary

Warmer temperatures were reported early in the week. Windy weather brought cooler temperatures and dust storms to the Panhandle late in the week. Many Areas of the Upper Coast, and Coastal Bend received a tenth of an inch to a quarter of an inch of precipitation. Areas of the Edwards Plateau and South Central Texas observed trace amounts up to a quarter inch of precipitation. The remainder of the state received no precipitation to a half of an inch.

Small Grains: Winter wheat in the Southern Low Plains and the Edwards

Plateau continued to show signs of stress brought on by dry, windy conditions. In the Coastal Bend winter wheat was entering the boot stage.

Row Crops: Wet field conditions delayed corn planting in the Blacklands. Producers in South Central Texas finished planting corn and turned their attention to planting cotton and sorghum. Rice planting was progressing well. Cotton fields continued to be prepared in the Northern Low Plains.

Fruit, Vegetable and Specialty Crop: Fall planted onions continued to grow and expand in size in the Trans-Pecos. Vegetables continued to be planted as cool night temperatures had affected intentions in North East Texas. Producers in the Edwards Plateau began the pruning and training grape vines.

Livestock, Range and Pasture: Livestock continued to be sold at local auctions. Cattle grazed winter pastures in the Blacklands. Fire danger remained high in the Trans-Pecos.

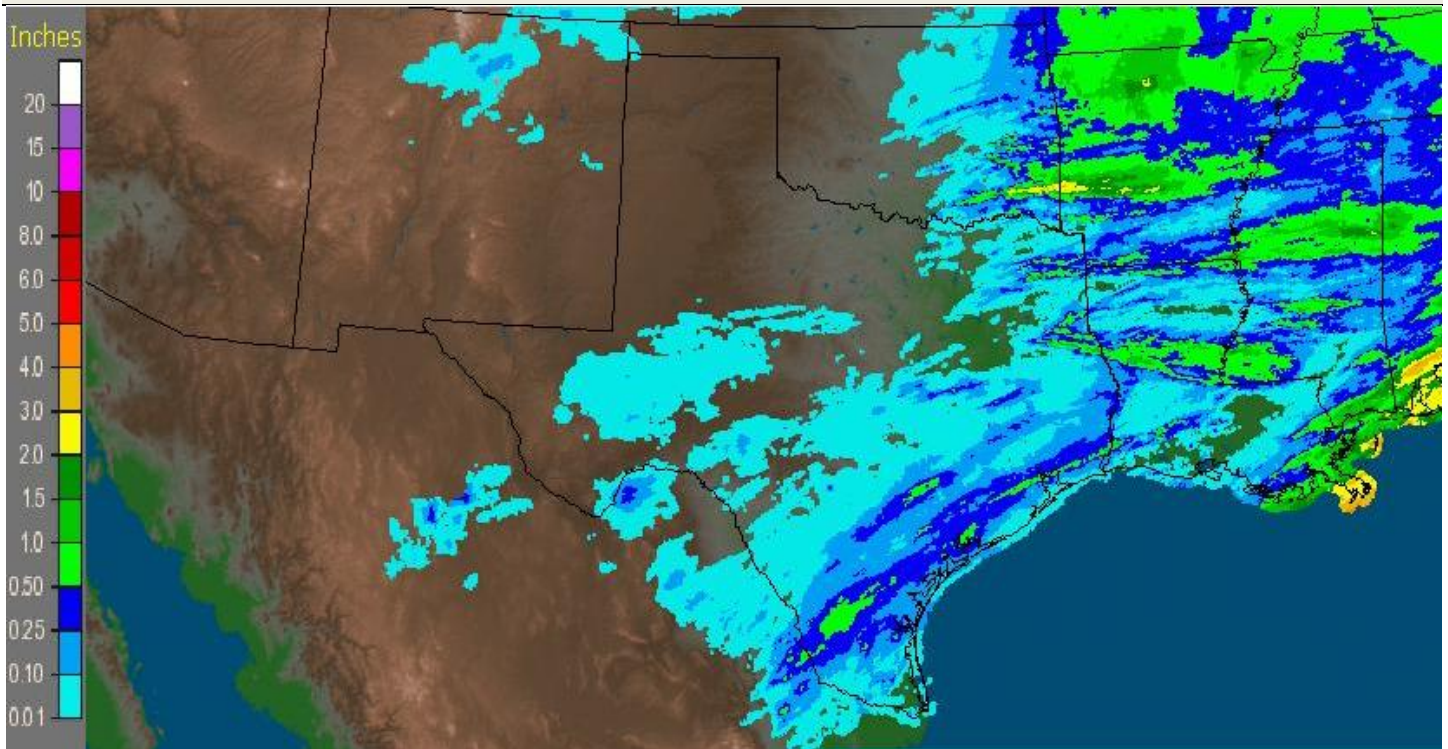
Crop Progress					
Crop	Stage	Percent of Acreage			
		Current	Prev Week	2013	5 Yr Avg
Corn	Planted	20	15	47	43
Cotton	Planted	3	--	3	4
Rice	Planted	3	--	19	15
Sorghum	Planted	15	10	32	31
Oats	Headed	3	--	13	10

Crop Condition					
Crop	Percent of Acreage				
	Excellent	Good	Fair	Poor	Very Poor
Wheat	1	10	34	37	18
Oats	7	26	35	23	9
Range and Pasture	2	14	32	32	20

* The formula for the condition index is $I = (5V + 25P + 60F + 90G + 110E)/100$ where I = crop condition index and V, P, F, G, E = percentage of crop rated very poor, poor, fair, good, excellent.

Top Soil Moisture Condition by District									
District	Percent of Acreage				District	Percent of Acreage			
	Very Short	Short	Adequate	Surplus		Very Short	Short	Adequate	Surplus
1-N	61	35	4	0	6	55	28	14	3
1-S	46	49	4	1	7	29	51	20	0
2-N	35	55	10	0	8-N	11	53	36	0
2-S	50	47	3	0	8-S	21	27	48	4
3	35	53	12	0	9	4	14	59	23
4	14	39	45	2	10-N	29	39	31	1
5-N	3	10	70	17	10-S	0	26	73	1
5-S	2	15	60	23	State	33	42	23	2

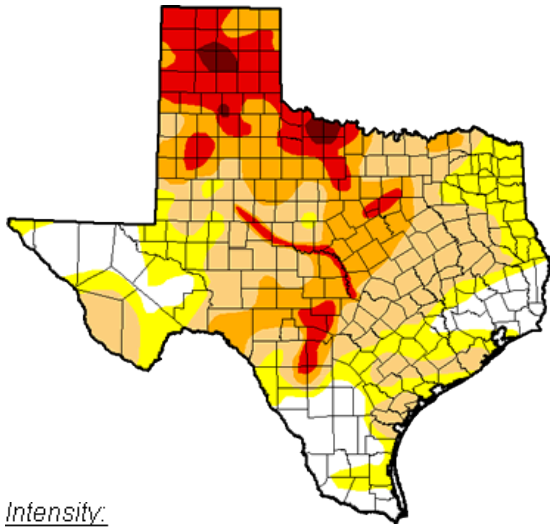
Seven Day Observed Regional Precipitation, March 23, 2014



Source: National Weather Service, www.nws.noaa.gov

Drought Monitor

Valid 3/18/2014, 7:00 am ET



Intensity:



Source: National Drought Mitigation Center, a partnership with USDA, U.S. Department of Commerce/NOAA, <http://droughtmonitor.unl.edu/>

Texas Agricultural Districts

