



Texas Crop Progress and Condition

Texas Field Office, Post Office Box 70, Austin, Texas 78767 · 800-626-3142 · www.nass.usda.gov/tx

WEEKLY SUMMARY FOR APRIL 21 - 27

ISSUE TX-CW1614

RELEASED APRIL 28, 2014

Summary

Freezing temperatures and hail affected much of the state last week, reaching from the Panhandle all the way to South Texas. Later in the week, hot temperatures and high winds increased the potential of wildfires. Moisture was scarce across the state, with scattered areas of the Northern Low Plains and Cross Timbers receiving upwards of 1 inch of precipitation.

Small Grains: Freeze and hail damage to small grains in the Panhandle and the Edwards Plateau ranged from mild to severe, prompting some producers to graze out or bale the remainder. In the Blacklands, wheat was mostly headed.

Row Crops: Producers in the High Plains and Northern Low Plains were pre-watering in anticipation of planting the upcoming cotton and corn crops. Corn planting in North East Texas neared completion. Freeze damage impacted corn from the Blacklands to South Central Texas. Some cotton replanting was active in areas of the Upper Coast that received significant frost and hail damage.

Fruit, Vegetable and Specialty Crop: Vegetable planting progressed in North East Texas. Pecans in the Trans-Pecos were in the pollination stage, whereas pecans in the Cross Timbers and Edwards Plateau experienced some frost and hail damage. Some peaches and apples in the Trans-Pecos had buds nipped back by frost. In South Texas, spinach harvest was active and producers prepared potato fields for harvest. Cabbage and onions also made good progress.

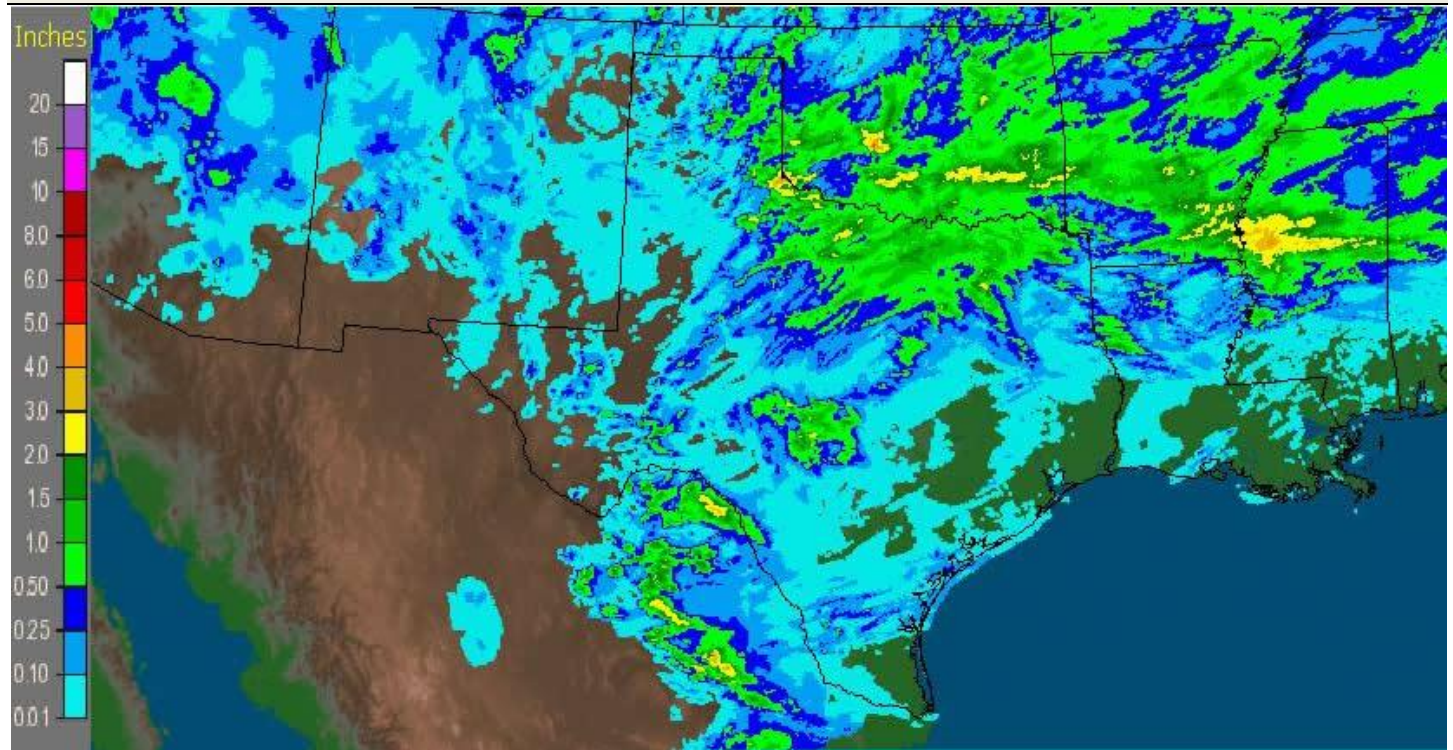
Crop Progress					
Crop	Stage	Percent of Acreage			
		Current	Prev Week	2013	5 Yr Avg
Corn	Planted	64	60	68	69
	Emerged	55	50	59	59
Cotton	Planted	15	12	14	18
Peanuts	Planted	2	0	3	5
Rice	Planted	79	73	95	90
	Emerged	66	51	82	73
Sorghum	Planted	67	59	64	61
Soybeans	Planted	27	21	53	63
	Emerged	4	0	13	12
Sunflowers	Planted	15	2	22	22
Winter Wheat	Headed	50	34	43	55
Oats	Headed	70	46	75	82

Crop Condition					
Crop	Percent of Acreage				
	Excellent	Good	Fair	Poor	Very Poor
Corn	4	19	65	11	1
Rice	5	39	49	5	2
Wheat	1	12	22	36	29
Oats	7	28	32	23	10
Range and pasture	4	20	30	24	22

Livestock, Range and Pasture: Supplemental feeding slowed in the Blacklands and North East Texas as pastures and forage greened up. Ranchers in the Trans-Pecos were branding and working calves. Many pastures and stock tanks remained in need of moisture as high winds depleted soil moisture.

Top Soil Moisture Condition by District									
District	Percent of Acreage				District	Percent of Acreage			
	Very Short	Short	Adequate	Surplus		Very Short	Short	Adequate	Surplus
1-N	66	29	4	1	6	52	31	16	1
1-S	57	38	4	1	7	37	45	18	0
2-N	65	26	8	1	8-N	19	54	27	0
2-S	48	46	6	0	8-S	27	39	29	5
3	27	53	20	0	9	10	24	63	3
4	19	35	41	5	10-N	31	49	20	0
5-N	2	11	70	17	10-S	2	79	19	0
5-S	15	26	48	11	State	38	40	21	1

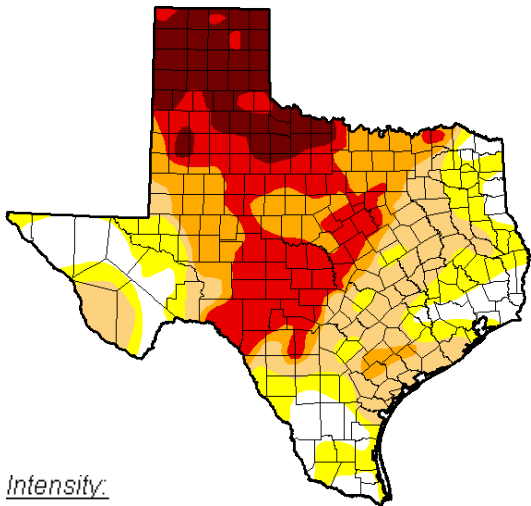
Seven Day Observed Regional Precipitation, April 27, 2014



Source: National Weather Service, www.nws.noaa.gov

Drought Monitor

Valid 4/22/2014, 7:00 am ET



Intensity:



Source: National Drought Mitigation Center, a partnership with USDA, U.S. Department of Commerce/NOAA, <http://droughtmonitor.unl.edu/>

Texas Agricultural Districts

