



Texas Crop Progress and Condition

Southern Plains Regional Field Office

Post Office Box 70 Austin, Texas 78767

(800) 626-3142 · FAX (855) 270-2725 · www.nass.usda.gov/tx

Issue: TX-CW2514

Weekly Summary for June 23 - June 29

Released June 30, 2014

Summary

Widespread rainfall was experienced throughout Texas last week. Areas of the Cross-Timbers, Blacklands, East Texas and the Upper Coast received up to six inches of rainfall. The Trans-Pecos and the Coastal Bend received up to five inches of precipitation, while the rest of the state received up to three inches.

Small Grains: Winter wheat harvest was nearing completion across the state. Rainfall slowed the harvest of wheat in the Blacklands, while weeds impeded progress in the Northern High Plains.

Row Crops: In areas of the Northern High Plains and Blacklands, corn was improving due to recent rainfall. In the Upper Coast, corn was at the denting stage. In the Northern Low Plains, cotton continued to progress, aided by adequate moisture in the area. Cotton was maturing in areas of South East Texas. Sorghum harvest was underway in areas of the Lower Valley and Coastal Bend, while head worms were reported in areas of South Central Texas. Peanuts were blooming in the Southern High Plains. In the Upper Coast, recent rainfall promoted soybean development. Sunflowers were maturing in areas of the Coastal Bend.

Fruit, Vegetable and Specialty Crops: In the Trans-Pecos, pecans were at the enlargement stage, while spraying of trees continued in the Edwards Plateau. Potato harvest was in full swing in South Texas. Watermelon harvest was active in the Lower Valley.

Livestock, Range and Pasture: Supplemental feeding of livestock decreased in areas of the Edwards Plateau and South Texas due to improving pasture conditions. Recent precipitation slowly improved pastures in areas of the Northern Low Plains. Ranchers continued to report problems with insects on livestock in some areas of the state.

Crop Progress

Stage	Percent of Acreage			
	Current	Prev. Week	Prev. Year	5 Year Avg
Corn				
Silked	57	50	66	61
Dough	40	29	41	44
Dented	21	8	23	28
Mature	2	N/A	4	5
Cotton				
Planted	99	97	100	100
Squaring	18	15	29	32
Setting Bolls	7	5	9	11
Peanuts				
Planted	94	93	100	100
Pegging	2	N/A	14	11
Rice				
Headed	12	5	38	28
Sorghum				
Planted	97	95	98	95
Headed	53	50	59	58
Coloring	35	28	45	46
Mature	18	8	27	28
Harvested	1	N/A	3	6
Soybeans				
Planted	99	96	100	100
Emerged	96	95	99	99
Blooming	40	37	41	50
Sunflowers				
Planted	98	96	92	85
Winter Wheat				
Harvested	77	69	70	79
Oats				
Harvested	90	78	96	95

Crop Condition

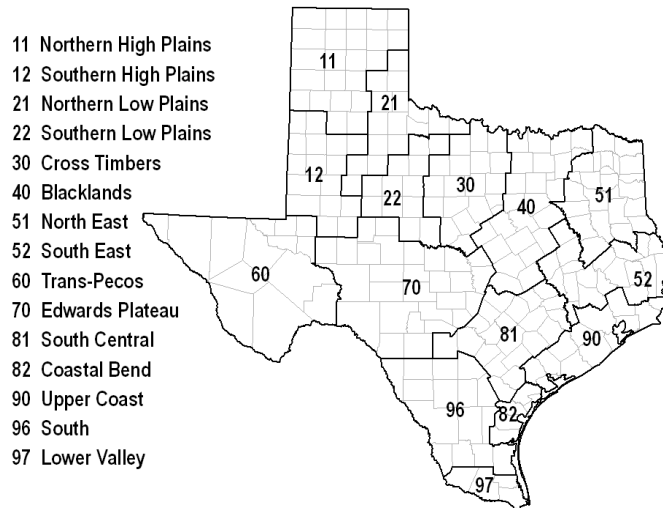
Crop	Percent of Acreage					Index ¹	
	Excellent	Good	Fair	Poor	Very Poor	2014	2013
Corn	19	45	32	4		82	75
Cotton	11	29	40	13	7	66	58
Peanuts	7	51	31	10	1	75	76
Rice	7	47	42	4		76	70
Sorghum	14	48	29	7	2	78	65
Soybeans	9	45	39	5	2	75	79
Wheat	2	13	22	32	31	37	26
Oats	7	26	39	19	9	60	53
Range and Pasture	12	36	32	14	6		

¹ The formula for the condition index is $I = (5V + 25P + 60F + 90G + 110E)/100$ where I = crop condition index and V, P, F, G, E = percentage of crop rated very poor, poor, fair, good, excellent.

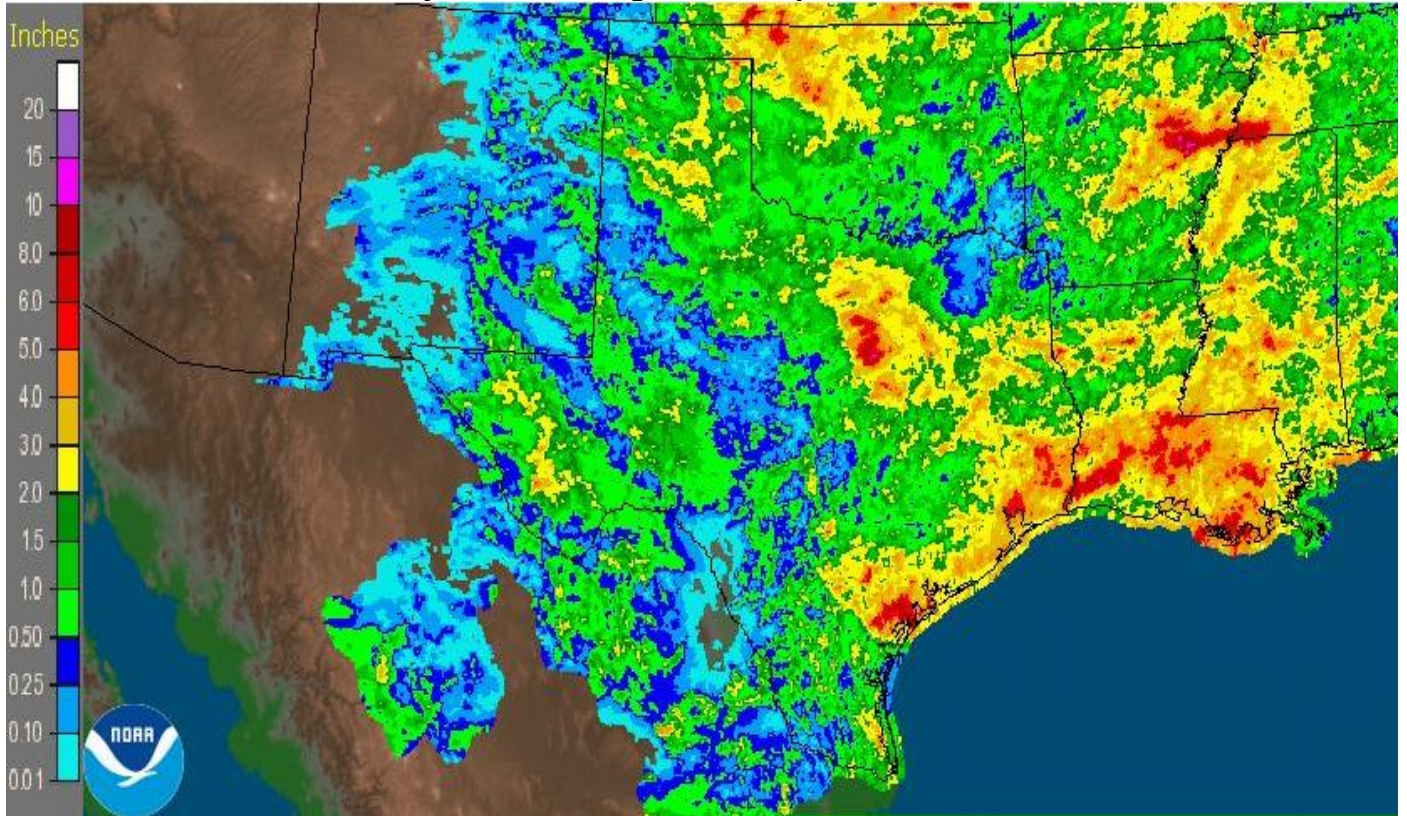
Top Soil Moisture Condition by District

District	Topsoil Moisture Condition by District				Subsoil Moisture Condition by District				Days Suitable for Fieldwork
	Percentage of Acreage				Percentage of Acreage				
	Very Short	Short	Adequate	Surplus	Very Short	Short	Adequate	Surplus	
11	21	29	45	5	29	31	37	3	3.8
12	18	32	49	1	27	36	36	1	6.6
21	6	18	64	12	9	30	52	9	6.5
22	17	24	54	5	20	41	36	3	5.5
30	18	18	63	1	18	45	37	0	5.8
40	3	16	69	12	3	15	70	12	4.0
51	0	8	77	15	1	10	76	13	5.1
52	6	18	53	23	4	24	53	19	4.4
60	58	28	13	1	59	33	7	1	6.6
70	18	33	48	1	15	37	47	1	6.1
81	2	33	59	6	4	35	58	3	5.8
82	17	38	23	22	17	50	30	3	4.2
90	4	15	67	14	4	10	74	12	2.7
96	21	44	33	2	11	53	36	0	5.8
97	5	82	13	0	10	43	47	0	7.0
State	18	27	50	5	19	33	44	4	5.2

Texas Agricultural Districts



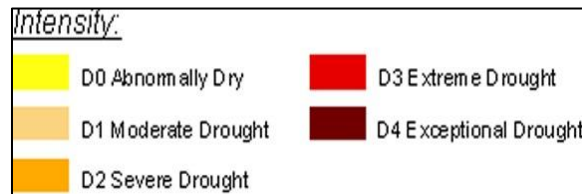
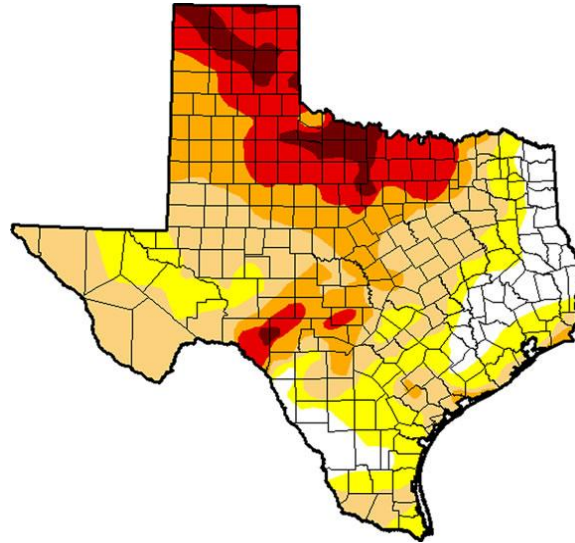
Seven Day Observed Regional Precipitation, June 29, 2014



Source: National Weather Service, www.nws.noaa.gov

Drought Monitor

Valid June 24, 2014



Source: National Drought Mitigation Center, a partnership with USDA, U.S. Department of Commerce/NOAA, <http://droughtmonitor.unl.edu/>