



# Texas Crop Progress and Condition

Southern Plains Regional Field Office

Post Office Box 70 Austin, Texas 78767

(800) 626-3142 · FAX (855) 270-2725 · www.nass.usda.gov/tx

**Issue: TX-CW2614**

**Weekly Summary for June 30 - July 6**

**Released July 7, 2014**

## Summary

Hot temperatures were experienced across the state early in the week with isolated showers occurring as the week progressed. Areas of the Plains, Cross Timbers and East Texas received up to 3 inches of precipitation. The Edwards Plateau received little to no rainfall, while the rest of the state received trace amounts of precipitation.

**Small Grains:** Winter wheat continued to be harvested throughout the state. Producers in the Northern High Plains were spraying for weeds and insects.

**Row Crops:** In areas of the Northern High Plains, corn experienced rapid growth as a result of recent rainfall. Corn was beginning to mature in areas of South Texas. In the Upper Coast, rice made good progress with many producers spraying fungicide to control disease. Cotton was setting bolls the Upper Coast, while in the Edwards Plateau, producers continued spraying for weeds. Sorghum continued to be sprayed for sugarcane aphids in areas of the Blacklands and South East Texas, while in South Texas sorghum was turning color and some had matured. Peanuts began pegging in areas of the Southern High Plains. In the Blacklands, soybeans continued to progress.

**Fruit, Vegetable and Specialty Crops:** Fruits and vegetables continued to be harvested in North East Texas. In the Trans-Pecos, pecans continued to progress, while producers began spraying pecan trees for pests. Watermelon harvest was active in many areas of South Texas.

**Livestock, Range and Pasture:** In some areas of the state, pastures were in need of moisture, while areas of east and central Texas continued to green. In the Edwards Plateau, shipping of lambs had begun. Insect populations were increasing in pastures around the state with some producers applying insecticides. In North East Texas, forage continued to progress, aided by recent rainfall. In areas of North Texas, cattle were reported to be in good condition.

Texas Crop Progress

Stage	Percent of Acreage			
	Current	Prev. Week	Prev. Year	5 Year Avg
<b>Corn</b>				
Silked	80	57	67	67
Dough	52	40	50	51
Dented	33	21	36	39
Mature	8	2	13	15
<b>Cotton</b>				
Planted	100	99	100	100
Squaring	36	18	40	52
Setting Bolls	9	7	11	14
<b>Peanuts</b>				
Planted	100	94	100	100
Pegging	8	2	22	27
<b>Rice</b>				
Headed	20	12	46	42
<b>Sorghum</b>				
Planted	100	97	99	98
Headed	54	53	60	61
Coloring	41	35	48	52
Mature	26	18	31	35
Harvested	5	1	16	15
<b>Soybeans</b>				
Planted	100	99	100	100
Emerged	99	96	100	100
Blooming	42	40	55	61
<b>Sunflowers</b>				
Planted	99	98	93	88
<b>Winter Wheat</b>				
Harvested	85	77	82	90
<b>Oats</b>				
Harvested	91	90	98	96

### Crop Condition

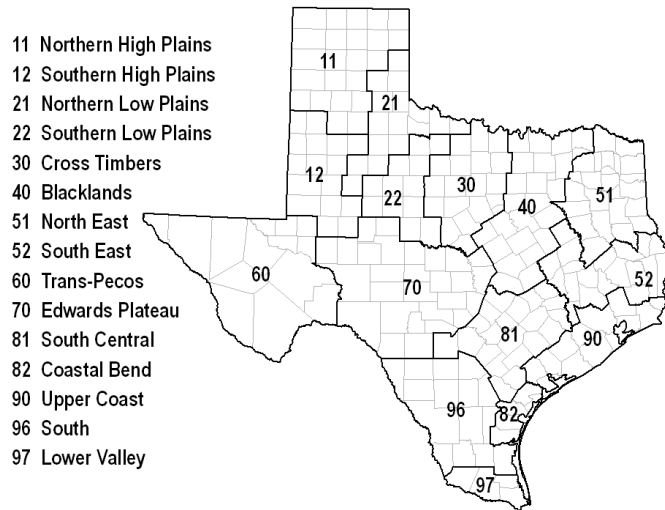
Crop	Percent of Acreage					Index <sup>1</sup>	
	Excellent	Good	Fair	Poor	Very Poor	2014	2013
Corn	19	47	30	4		82	78
Cotton	11	30	37	14	8	65	54
Peanuts	7	48	35	9	1	74	73
Rice	6	47	44	3		76	76
Sorghum	13	50	29	6	2	78	66
Soybeans	8	46	39	5	2	75	74
Wheat	2	13	22	32	31	37	26
Oats	7	26	39	19	9	60	53
Range and Pasture	12	35	33	14	6	--	--

<sup>1</sup> The formula for the condition index is  $I = (5V + 25P + 60F + 90G + 110E)/100$  where I = crop condition index and V, P, F, G, E = percentage of crop rated very poor, poor, fair, good, excellent.

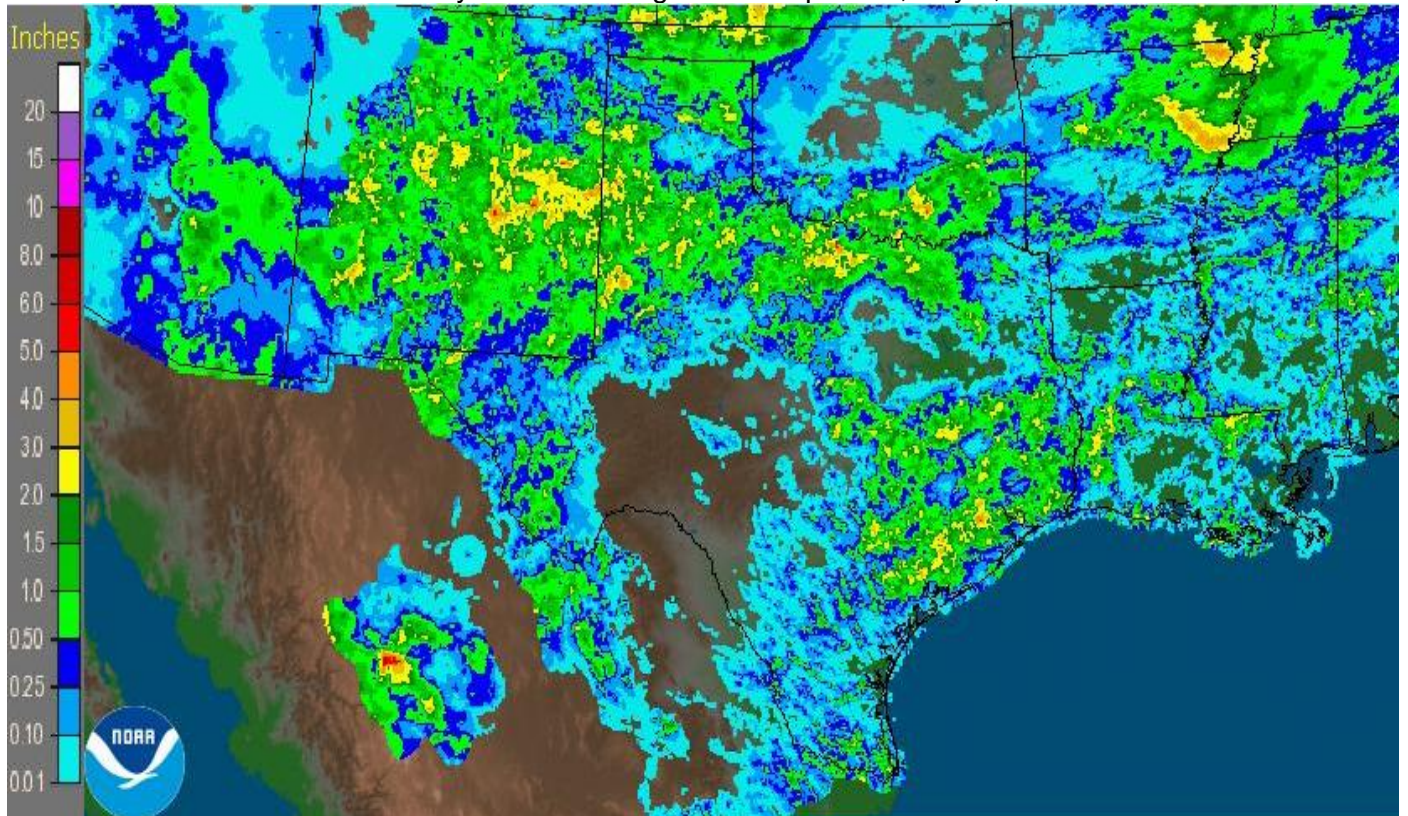
### Top Soil Moisture Condition by District

District	Topsoil Moisture Condition by District				Subsoil Moisture Condition by District				Days Suitable for Fieldwork
	Percentage of Acreage				Percentage of Acreage				
	Very Short	Short	Adequate	Surplus	Very Short	Short	Adequate	Surplus	
11	23	34	43	0	27	37	34	2	4.8
12	18	36	45	1	17	40	42	1	6.2
21	7	16	67	10	9	28	54	9	5.4
22	18	54	26	2	20	45	33	2	6.2
30	8	41	49	2	15	48	37	0	6.1
40	2	24	70	4	3	22	69	6	6.1
51	1	15	76	8	1	15	75	9	6.5
52	5	21	58	16	5	31	54	10	5.8
60	58	32	10	0	56	34	10	0	6.6
70	19	40	40	1	16	43	40	1	6.7
81	3	44	49	4	5	45	46	4	6.4
82	20	39	19	22	17	47	33	3	7.0
90	3	13	71	13	3	9	78	10	3.1
96	23	55	21	1	13	54	33	0	6.5
97	6	84	10	0	11	45	44	0	6.0
State	18	35	44	3	18	37	43	2	5.7

### Texas Agricultural Districts

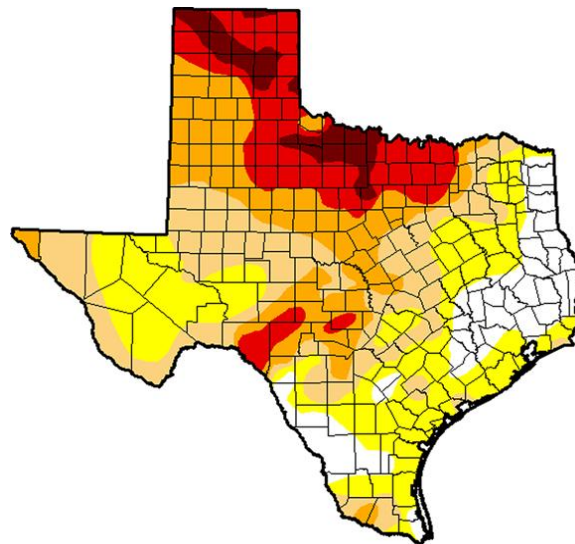


Seven Day Observed Regional Precipitation, July 6, 2014



Source: National Weather Service, [www.nws.noaa.gov](http://www.nws.noaa.gov)

Drought Monitor  
Valid July 1, 2014



*Intensity:*

D0 Abnormally Dry	D3 Extreme Drought
D1 Moderate Drought	D4 Exceptional Drought
D2 Severe Drought	

Source: National Drought Mitigation Center, a partnership with USDA, U.S. Department of Commerce/NOAA, <http://droughtmonitor.unl.edu/>