



Texas Crop Progress and Condition

Southern Plains Regional Field Office

Post Office Box 70, Austin, Texas 78767 · (800) 626-3142 · FAX (855) 270-2725 · www.nass.usda.gov/tx

Issue: TX-CW2814

Weekly Summary for July 14 - July 20

Released July 21, 2014

Summary

Cool temperatures and overcast skies occurred throughout the state last week. Areas of the Blacklands and East Texas received up to six inches of rainfall. Portions of the Northern High Plains, Edwards Plateau and South Texas recorded three inches or more of rainfall for the week, while the rest of the state received up to an inch of precipitation or less.

Small Grains: Winter wheat harvest was virtually complete for the state. Oat harvest was wrapping up across the state.

Row Crops: Corn continued to tassel in areas of the Southern High Plains, while fields were maturing in areas of the Blacklands and South Central Texas. In areas of South Texas, peanuts were being irrigated as pegging continued. Sorghum continued to progress, and was being baled for hay in the Cross Timbers. In the Northern Low Plains, cotton continued to square from recent rainfall and warm weather, while cotton bolls were opening in the Coastal Bend. In many areas of the Upper Coast rice progressed as producers expressed concern about the potential for disease due to recent rainfall. Sunflowers throughout the Blacklands were progressing well. Soybeans benefitted from sufficient moisture in many areas of the Upper Coast.

Fruit, Vegetable and Specialty Crops: In South Texas, pecans were progressing well, while orchards in the Trans-Pecos were in the nut enlargement stage and were being irrigated. Watermelons were being harvested in areas of the Southern High Plains and South Texas. Grasshoppers caused problems with some vegetable crops in North East Texas. Peach harvest was wrapping up in the Edwards Plateau.

Livestock, Range and Pasture: Pastures across the state benefitted greatly from rainfall last week. Grasshoppers continued to be seen in fields and pastures across the state. Cattle were in good condition, as field grasses were greening up from recent precipitation. In the Trans-Pecos, cattle producers continued to provide supplemental feed.

Crop Progress

Stage	Percent of Acreage			
	Current	Prev. Week	Prev. Year	5 Year Avg
Corn				
Silked	91	81	82	85
Dough	61	60	64	62
Dented	48	41	57	56
Mature	29	15	45	42
Cotton				
Squaring	81	59	72	78
Setting Bolls	24	15	17	27
Bolls Opening	3	1	5	6
Peanuts				
Pegging	45	30	81	67
Rice				
Headed	63	50	87	74
Sorghum				
Headed	88	65	75	69
Coloring	69	57	67	61
Mature	52	44	55	50
Harvested	23	15	37	30
Soybeans				
Blooming	60	57	75	79
Setting Pods	25	14	34	40
Winter Wheat				
Harvested	100	99	100	99
Oats				
Harvested	93	92	100	99

Crop Condition

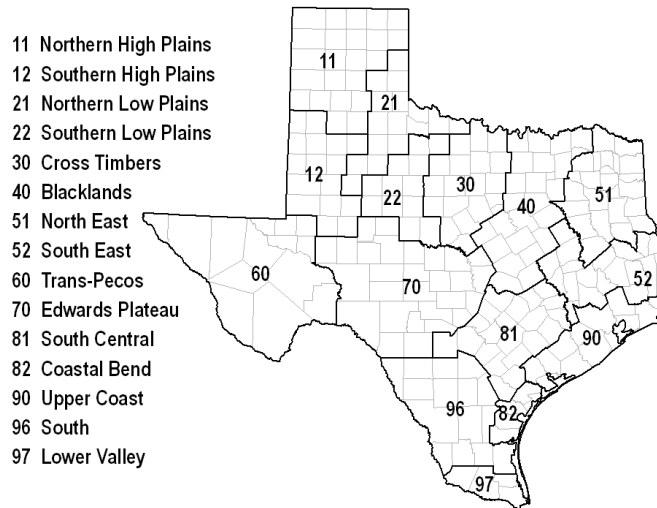
Crop	Percent of Acreage					Index ¹	
	Excellent	Good	Fair	Poor	Very Poor	2014	2013
Corn	15	47	33	5	0	80	75
Cotton	10	27	40	15	8	63	52
Peanuts	8	49	33	9	1	75	70
Rice	6	47	44	3	0	76	75
Sorghum	13	45	32	8	2	76	70
Soybeans	6	47	42	4	1	75	69
Wheat	2	13	22	32	31	37	26
Oats	7	26	39	19	9	60	53
Range and Pasture	11	33	35	14	7	---	---

¹ The formula for the condition index is $I = (5V + 25P + 60F + 90G + 110E)/100$ where I = crop condition index and V, P, F, G, E = percentage of crop rated very poor, poor, fair, good, excellent.

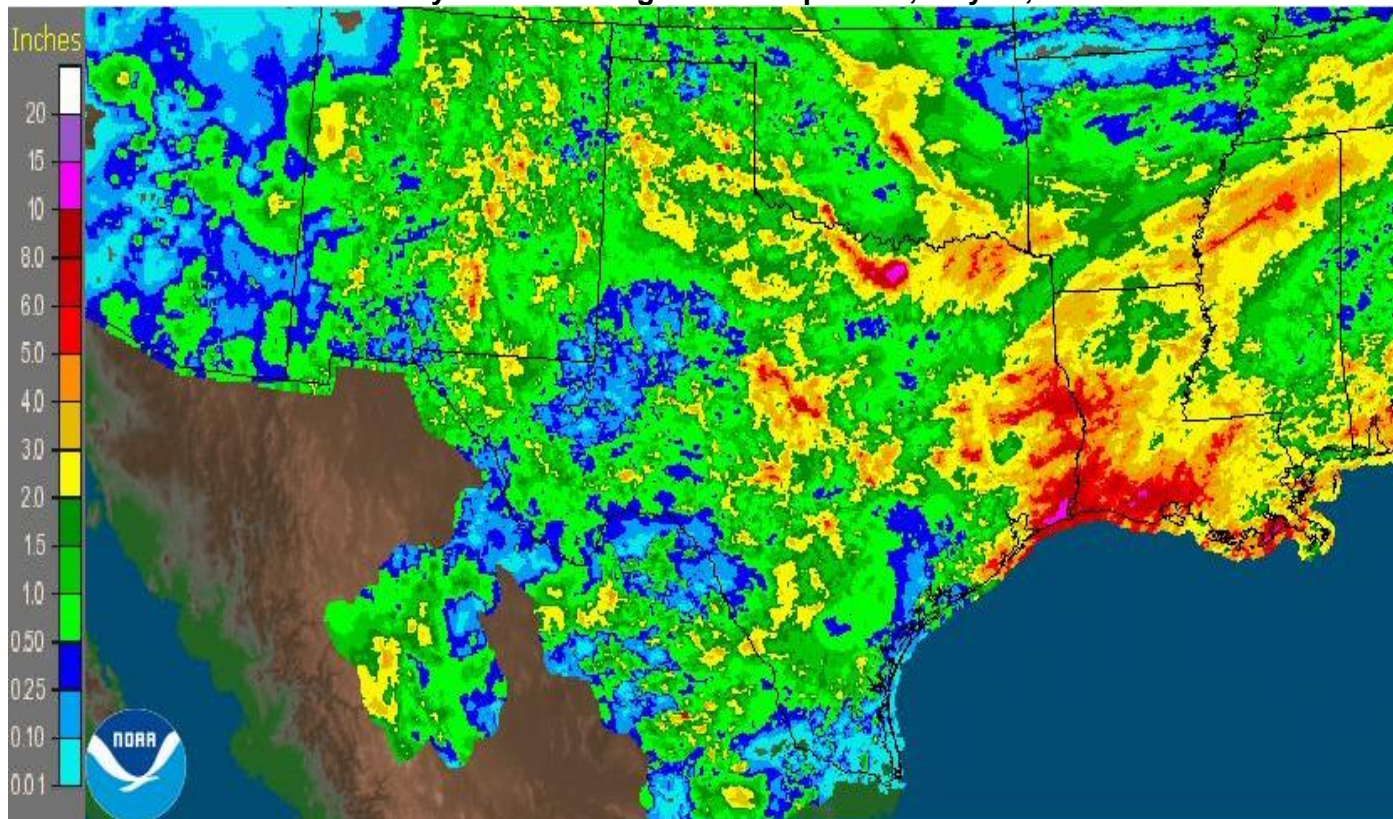
Top Soil Moisture Condition by District

District	Topsoil Moisture Condition by District				Subsoil Moisture Condition by District				Days Suitable for Fieldwork
	Percentage of Acreage				Percentage of Acreage				
	Very Short	Short	Adequate	Surplus	Very Short	Short	Adequate	Surplus	
11	20	49	29	2	25	38	35	2	5.6
12	18	47	34	1	17	47	34	2	6.2
21	5	26	66	3	11	32	56	1	4.1
22	22	46	29	3	23	42	32	3	5.3
30	10	40	50	0	17	45	37	1	5.6
40	3	32	56	9	5	28	60	7	5.4
51	1	12	77	10	1	13	76	10	5.1
52	7	30	49	14	7	33	49	11	5.8
60	38	51	10	1	36	51	13	0	7.0
70	22	40	37	1	18	46	35	1	5.6
81	12	54	31	3	14	51	32	3	6.4
82	32	36	26	6	23	47	27	3	5.6
90	5	18	69	8	3	11	76	10	4.3
96	21	39	38	2	15	46	38	1	5.9
97	6	83	11	0	11	81	8	0	7.0
State	17	42	38	3	17	43	38	2	5.6

Texas Agricultural Districts



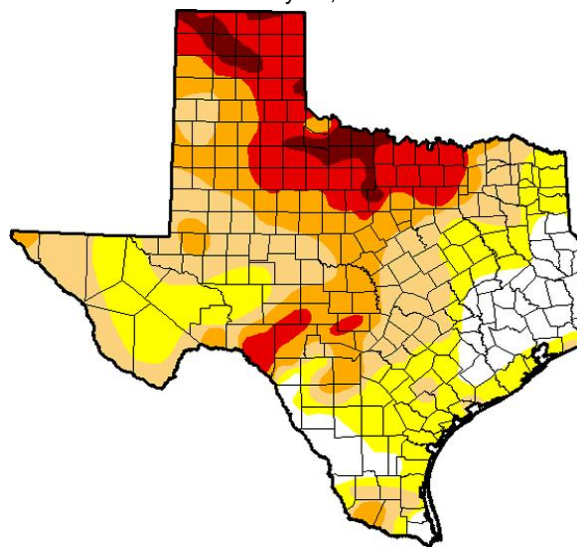
Seven Day Observed Regional Precipitation, July 20, 2014








Source: National Weather Service, www.nws.noaa.gov

Drought Monitor

Valid July 15, 2014



Intensity:

 D0 Abnormally Dry	 D3 Extreme Drought
 D1 Moderate Drought	 D4 Exceptional Drought
 D2 Severe Drought	

Source: National Drought Mitigation Center, a partnership with USDA, U.S. Department of Commerce/NOAA, <http://droughtmonitor.unl.edu/>