



Texas Crop Progress and Condition

Southern Plains Regional Field Office
Post Office Box 70 Austin, Texas 78767
(800) 626-3142 · FAX (855) 270-2725 · www.nass.usda.gov/tx

Issue: TX-CW3014

Weekly Summary for July 28 - August 3

Released August 4, 2014

Summary

The majority of the state received measurable rainfall last week. The Blacklands and East Texas received up to 5 inches in isolated areas, while the Trans-Pecos, Northern High Plains, and South Texas saw between 1 and 3 inches. Other areas within the state received no more than one inch of rainfall. Summer time temperatures continued across the state with highs averaging between the mid 90's and low 100's, though some areas in the Northern High Plains and the Blacklands experienced cooler temperatures toward the end of the week.

Small Grains: Small grain producers across the state continued field work ahead of fall seeding.

Row Crops: Cotton continued to progress in the Trans-Pecos, Edwards Plateau, and South East Texas, while cooler temperatures slowed development in the Northern High Plains. Sorghum harvest began in areas of South Central and the Coastal Blend. Producers in the Upper Coast and Lower Valley are preparing for corn harvest in the upcoming weeks. Rice continued to head in the Upper Coast, while peanuts were still in the pegging stage in South Texas. Sunflower harvest progressed in the Blacklands and South Central Texas.

Fruit, Vegetable and Specialty Crops: In South Texas, pecan orchards were being irrigated due to lack of moisture and high temperatures. Peach harvest was winding down in the Cross Timbers and Edwards Plateau. Producers in the Northern High Plains began potato harvest.

Livestock, Range and Pasture: Recent rainfall in the Northern Plains improved pasture and range last week, while conditions began to deteriorate in areas of Edwards Plateau due to dry weather. Hay harvest was active across the state last week, with some producers in the Trans-Pecos working on their fourth and fifth cuttings of alfalfa. Forage for cattle progressed in the Upper Coast and the Blacklands, though some producers in South Texas began to provide supplemental feed.

Crop Progress

Stage	Percent of Acreage			
	Current	Prev. Week	Prev. Year	5 Year Avg
Corn				
Silked	99	97	93	95
Dough	87	80	69	69
Dented	75	72	60	60
Mature	45	38	54	54
Cotton				
Squaring	94	82	94	94
Setting Bolls	57	30	40	58
Bolls Opening	9	6	9	12
Peanuts				
Pegging	77	51	97	90
Rice				
Headed	89	81	97	91
Sorghum				
Headed	90	89	82	80
Coloring	87	72	73	67
Mature	81	58	63	61
Harvested	39	33	45	45
Soybeans				
Blooming	76	66	94	90
Setting Pods	65	48	54	72
Sunflowers				
Harvested	20	17	3	1
Oats				
Harvested	100	99	100	100

Crop Condition

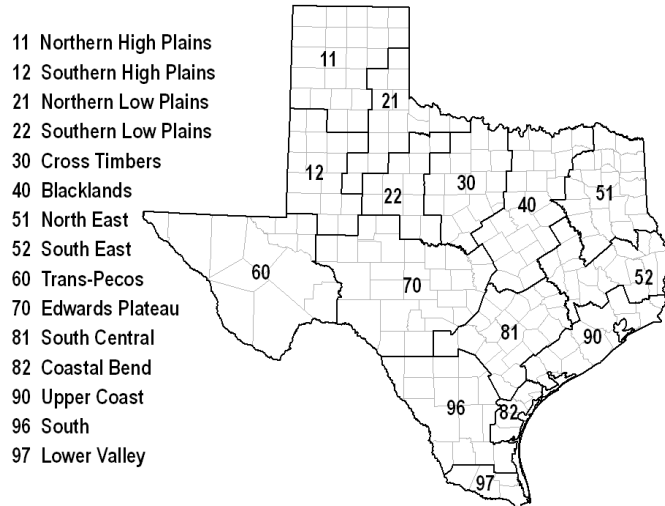
Crop	Percent of Acreage					Index ¹	
	Excellent	Good	Fair	Poor	Very Poor	2014	2013
Corn	16	47	31	5	1	80	73
Cotton	8	30	40	16	6	64	58
Peanuts	8	49	33	9	1	75	71
Rice	7	47	43	3	0	77	75
Sorghum	11	45	32	9	3	74	69
Soybeans	6	45	43	5	1	74	73
Oats	7	26	39	19	9	60	53
Range and Pasture	9	32	35	16	8	--	--

¹ The formula for the condition index is $I = (5V + 25P + 60F + 90G + 110E)/100$ where I = crop condition index and V, P, F, G, E = percentage of crop rated very poor, poor, fair, good, excellent.

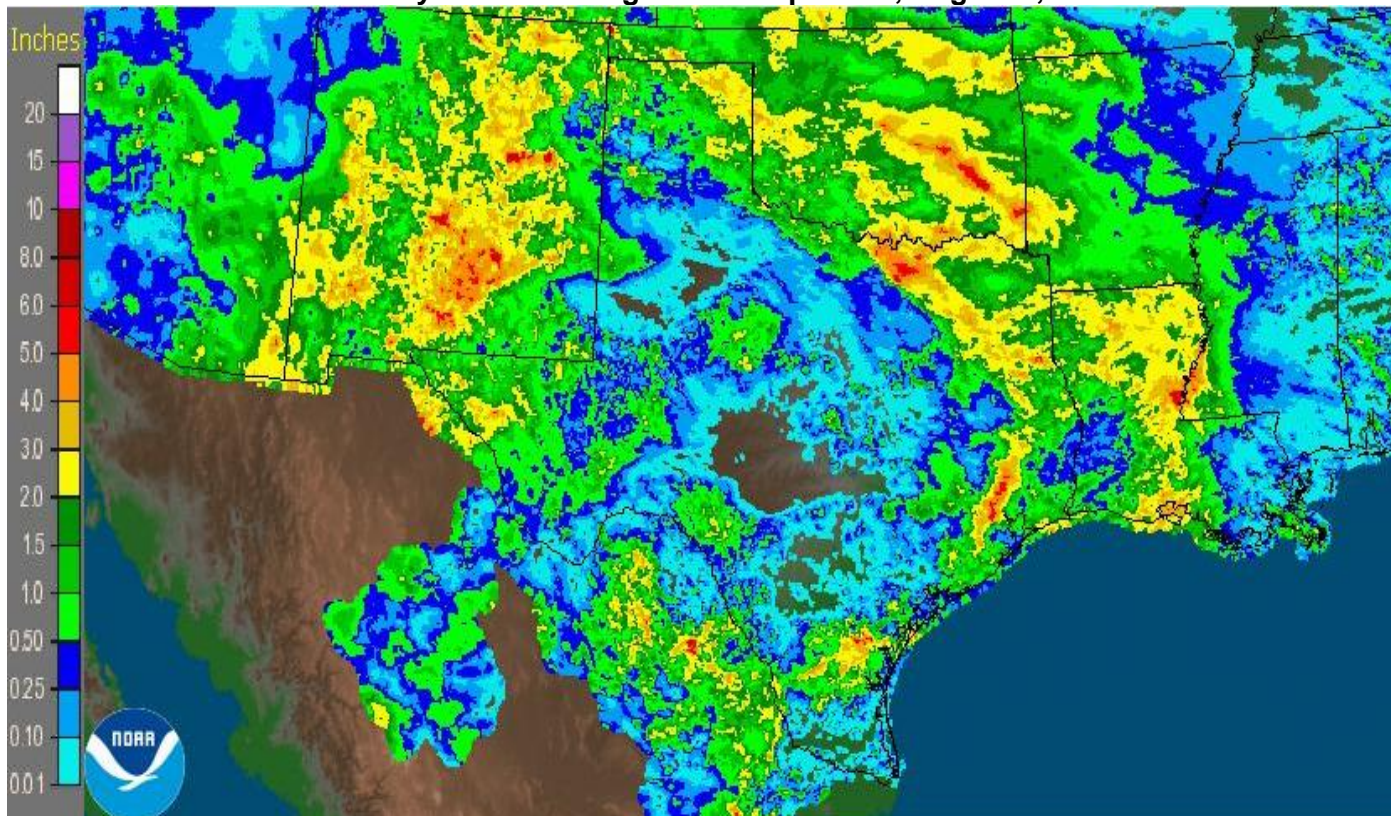
Top Soil Moisture Condition by District

District	Topsoil Moisture Condition by District				Subsoil Moisture Condition by District				Days Suitable for Fieldwork
	Percentage of Acreage				Percentage of Acreage				
	Very Short	Short	Adequate	Surplus	Very Short	Short	Adequate	Surplus	
11	26	40	26	8	29	38	32	1	5.3
12	25	60	14	1	23	60	16	1	6.7
21	12	37	50	1	15	32	53	0	4.4
22	30	50	20	0	26	49	25	0	6.3
30	13	52	34	1	19	49	31	1	5.6
40	8	38	45	9	7	36	48	9	5.6
51	0	7	78	15	0	8	77	15	5.5
52	7	37	48	8	6	39	48	7	6.3
60	25	55	19	1	39	53	7	1	7.0
70	30	44	25	1	23	46	30	1	6.7
81	25	52	23	0	25	51	24	0	6.6
82	34	39	20	7	29	47	20	4	7.0
90	5	31	51	13	2	19	69	10	5.2
96	29	45	26	0	23	51	26	0	6.9
97	27	67	6	0	26	74	0	0	7.0
State	21	46	30	3	22	45	31	2	5.9

Texas Agricultural Districts



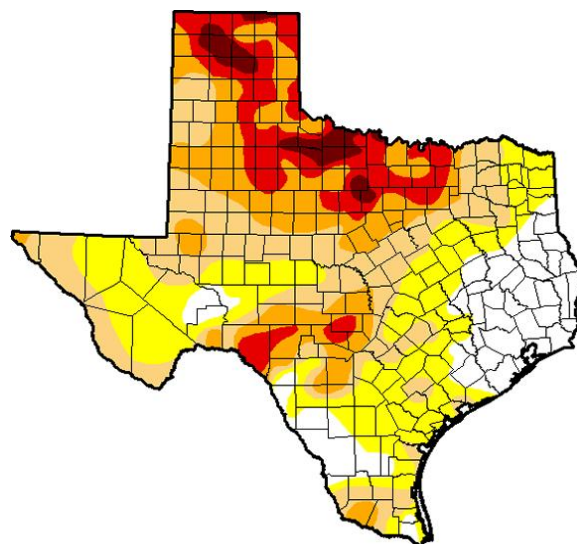
Seven Day Observed Regional Precipitation, August 3, 2014



Source: National Weather Service, www.nws.noaa.gov

Drought Monitor

Valid July 29, 2014



<i>Intensity:</i>	
D0 Abnormally Dry	D3 Extreme Drought
D1 Moderate Drought	D4 Exceptional Drought
D2 Severe Drought	

Source: National Drought Mitigation Center, a partnership with USDA, U.S. Department of Commerce/NOAA, <http://droughtmonitor.unl.edu/>