



# Texas Crop Progress and Condition

Southern Plains Regional Field Office  
Post Office Box 70 Austin, Texas 78767  
(800) 626-3142 · FAX (855) 270-2725 · www.nass.usda.gov/tx

**Issue: TX-CW3114**

**Weekly Summary for August 4 - August 10**

**Released August 11, 2014**

## Summary

Hot, humid weather was experienced across the state last week. Many areas of the Northern High Plains, Blacklands, and the Trans–Pecos received up to three inches of precipitation. Portions of the Lower Valley and South East Texas received two inches or more of rainfall. The rest of the state received little to no measurable rainfall last week.

**Small Grains:** Preparations for fall seedings continued across the state.

**Row Crops:** In areas of the Northern High Plains, some irrigated corn was cut for silage, while in the Blacklands corn continued to mature. Producers in South East Texas anticipate corn harvest should begin in the coming weeks. Cotton in the Southern Low Plains progressed to the blooming stage, while in the Coastal Bend many fields were being harvested. Peanuts continued to peg in areas of South Texas. In areas of the Upper Coast, producers were preparing fields for rice harvest. Sunflower harvest was wrapping up, while soybean harvest had begun in areas of the Blacklands. Sugarcane aphid populations continued to be a concern for sorghum producers in South East Texas, while harvest continued in South Central Texas.

**Fruit, Vegetable and Specialty Crops:** In areas of the Southern High Plains and the Cross-Timbers, watermelon harvest was active. In North East Texas, pecans had moderate to heavy nut set; however, some trees were exhibiting scab. Sesame harvest was active in the Lower Valley.

**Livestock, Range and Pasture:** Many livestock producers across the state continued to provide supplemental feed due to drought conditions in parts of the state. Cattle body condition was reported as improving in many parts of the state. Feral hog damage continued to be seen in areas of North East Texas, while grasshopper and army worm pressure increased in pastures throughout the state.

## Crop Progress

Stage	Percent of Acreage			
	Current	Prev. Week	Prev. Year	5 Year Avg
<b>Corn</b>				
Silked	100	99	95	97
Dough	88	87	74	77
Dented	76	75	61	65
Mature	50	45	56	57
Harvested	17	--	36	39
<b>Cotton</b>				
Squaring	98	94	97	97
Setting Bolls	78	57	65	76
Bolls Opening	11	9	10	13
<b>Peanuts</b>				
Pegging	85	77	98	94
<b>Rice</b>				
Headed	96	89	99	95
Harvested	6	--	26	30
<b>Sorghum</b>				
Headed	91	90	83	83
Coloring	88	87	74	68
Mature	82	81	64	62
Harvested	46	39	54	49
<b>Soybeans</b>				
Blooming	78	76	95	94
Setting Pods	72	65	60	81
Dropping Leaves	8	--	8	3
<b>Sunflowers</b>				
Harvested	39	20	5	2

### Crop Condition

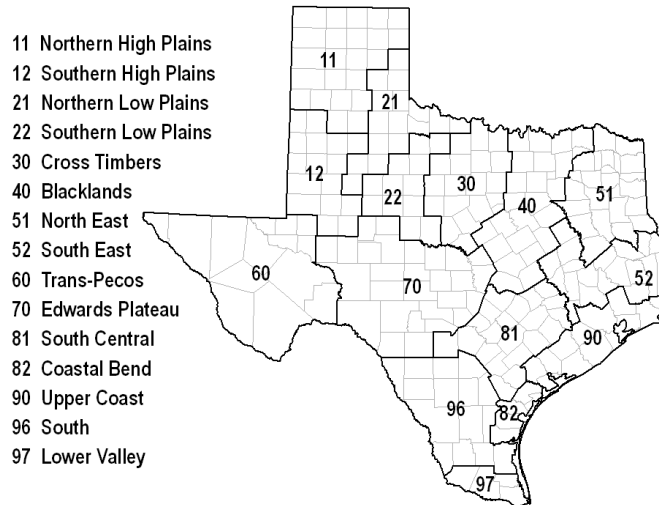
Crop	Percent of Acreage					Index <sup>1</sup>	
	Excellent	Good	Fair	Poor	Very Poor	2014	2013
Corn	16	49	28	6	1	80	76
Cotton	8	29	41	16	6	64	55
Peanuts	8	49	33	9	1	75	71
Rice	7	47	43	3	--	77	77
Sorghum	12	46	31	9	2	76	75
Soybeans	6	43	45	5	1	74	73
Range and Pasture	9	32	35	16	8	--	--

<sup>1</sup> The formula for the condition index is  $I = (5V + 25P + 60F + 90G + 110E)/100$  where I = crop condition index and V, P, F, G, E = percentage of crop rated very poor, poor, fair, good, excellent.

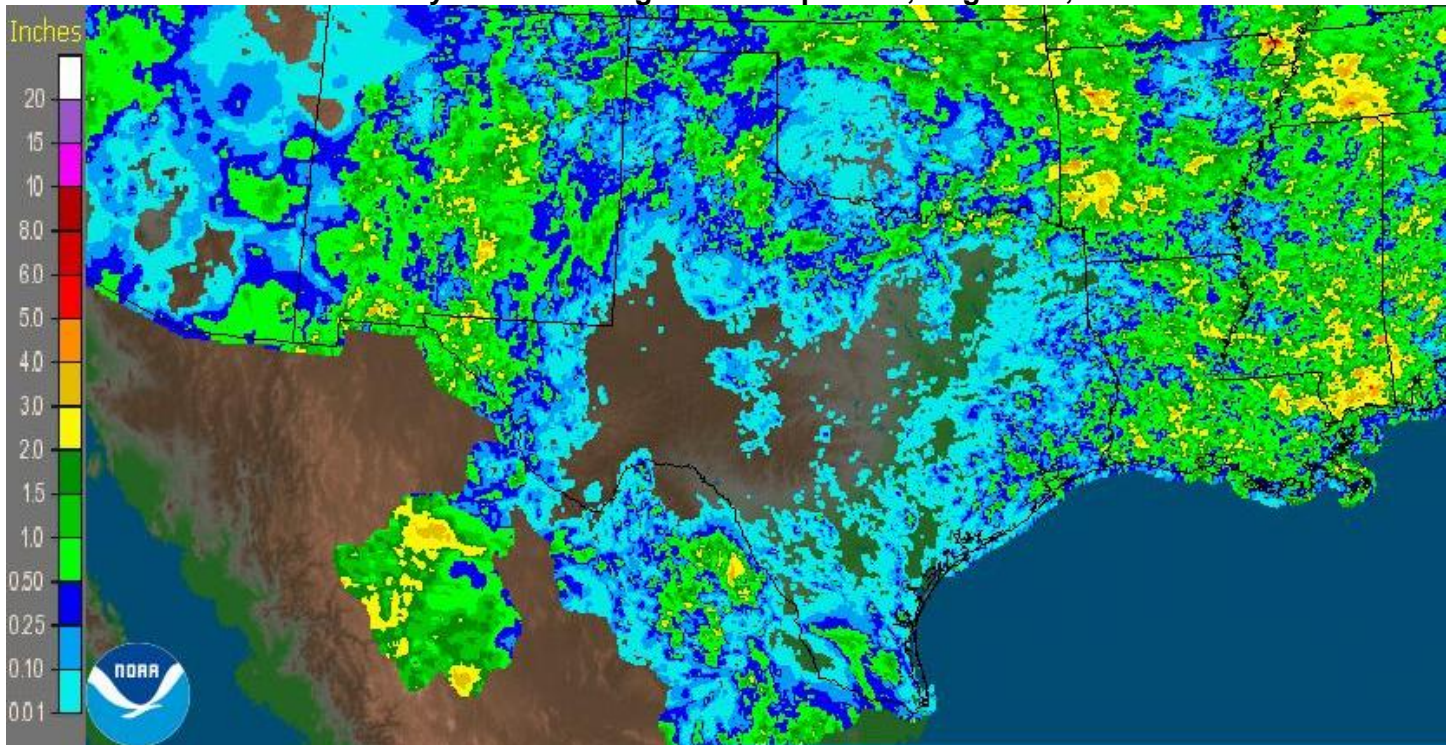
### Top Soil Moisture Condition by District

District	Topsoil Moisture Condition by District				Subsoil Moisture Condition by District				Days Suitable for Fieldwork
	Percentage of Acreage				Percentage of Acreage				
	Very Short	Short	Adequate	Surplus	Very Short	Short	Adequate	Surplus	
11	25	41	29	5	28	36	35	1	6.5
12	25	61	13	1	25	59	15	1	7.0
21	9	43	44	4	14	36	46	4	6.9
22	37	45	18	0	29	49	22	0	6.2
30	14	59	26	1	19	50	30	1	6.3
40	18	37	41	4	13	38	44	5	6.4
51	0	11	81	8	1	11	77	11	6.2
52	14	32	47	7	9	37	47	7	6.7
60	26	55	18	1	39	53	7	1	7.0
70	33	44	23	0	25	45	30	0	6.5
81	34	49	17	0	35	46	19	0	6.8
82	25	55	15	5	28	50	18	4	7.0
90	5	33	49	13	3	22	65	10	5.3
96	30	50	20	0	24	55	21	0	6.3
97	28	66	6	0	25	75	0	0	6.7
State	23	48	27	2	23	46	29	2	6.6

### Texas Agricultural Districts



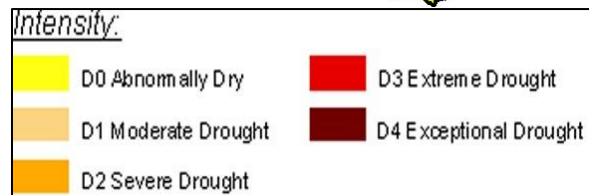
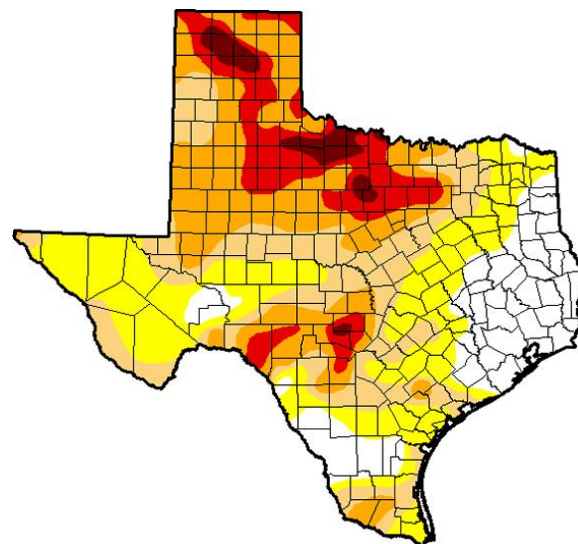
## Seven Day Observed Regional Precipitation, August 10, 2014



Source: National Weather Service, [www.nws.noaa.gov](http://www.nws.noaa.gov)

## Drought Monitor

Valid August 5, 2014



Source: National Drought Mitigation Center, a partnership with USDA, U.S. Department of Commerce/NOAA, <http://droughtmonitor.unl.edu/>