



Texas Crop Progress and Condition

Southern Plains Regional Field Office
Post Office Box 70 Austin, Texas 78767
(800) 626-3142 · FAX (855) 270-2725 · www.nass.usda.gov/tx

Issue: TX-CW3614 Weekly Summary for September 8 - September 14 Released September 15, 2014

Summary: The majority of the state received measurable rainfall last week. Trace amounts totaling up to 6 inches were seen in areas of the Lower Valley, Coastal Blend, Southern High Plains, and Upper Coast. The Low Plains, Cross Timbers, and South Texas saw between 1 and 5 inches of rainfall. Other areas of the state received no more than 1 inch. Cool temperatures between the mid 60's and low 70's were experienced in areas of the High Plains and Cross-Timbers.

Small Grains: Wheat seeding was active in areas of the Northern High Plains and Cross Timbers, with preparations continuing throughout most of the state.

Row Crops: Corn continued to progress across the state, with harvest wrapping up in areas of the Blacklands. Some producers in the Northern High Plains were waiting for irrigated corn to dry before beginning harvest. In the Northern Low Plains, Edwards Plateau and Trans-Pecos, cotton bolls were opening, with harvest continuing in areas of South Central Texas and the Coastal Blend. Cool temperatures last week slowed cotton growth in the Northern High Plains. Sorghum harvest continued in the Southern Low Plains and the Blacklands, though sugarcane aphid problems persisted in areas of the Edwards Plateau. Soybeans were setting pods in the Northern High Plains with harvest continuing in the Blacklands. Rice harvest continued in the major producing areas.

Fruit, Vegetable and Specialty Crops: Pecans progressed to the dough stage in areas of the Trans-Pecos. In South Texas, some producers anticipated spinach, cabbage, and onion seeding. Sesame continued to mature in areas of the Lower Valley.

Livestock, Range and Pasture: Livestock were in good condition throughout most of the state, while some producers began to provide supplemental feed in both South and South Central Texas. Range and pasture conditions improved in the Southern High Plains and Northern Low Plains due to recent rainfall. Armyworm infestations persisted in East Texas. Feral hog damage occurred in areas of South East Texas.

Stage	Crop Progress			
	Percent of Acreage			
	Current	Prev. Week	Prev. Year	5 Year Avg
Corn				
Dough	98	97	95	97
Dented	92	90	89	91
Mature	74	72	75	76
Harvested	59	57	61	61
Cotton				
Setting Bolls	99	98	98	98
Bolls Opening	44	34	29	42
Harvested	15	13	9	12
Rice				
Harvested	90	82	97	95
Sorghum				
Headed	99	98	99	98
Coloring	93	92	85	81
Mature	87	86	74	69
Harvested	66	65	71	60
Soybeans				
Blooming	100	99	100	100
Setting Pods	98	97	80	96
Dropping Leaves	58	51	65	76
Harvested	35	30	48	54
Sunflowers				
Harvested	75	74	27	34
Winter Wheat				
Planted	8	3	15	12

Crop Condition

Crop	Percent of Acreage					Index ¹	
	Excellent	Good	Fair	Poor	Very Poor	2014	2013
Corn	18	49	27	5	1	81	75
Cotton	9	25	39	19	8	61	55
Peanuts	8	48	34	9	1	75	72
Rice	7	53	35	5		78	75
Sorghum	12	46	31	9	2	76	76
Soybeans	7	45	43	4	1	75	68
Range and Pasture	4	24	36	23	13	--	--

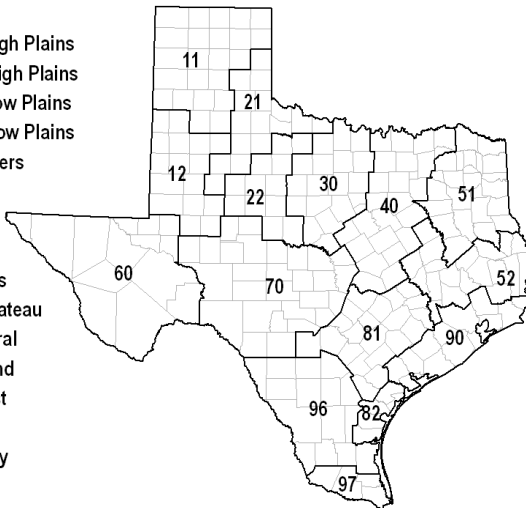
¹ The formula for the condition index is $I = (5V + 25P + 60F + 90G + 110E)/100$ where I = crop condition index and V, P, F, G, E = percentage of crop rated very poor, poor, fair, good, excellent.

Top Soil Moisture Condition by District

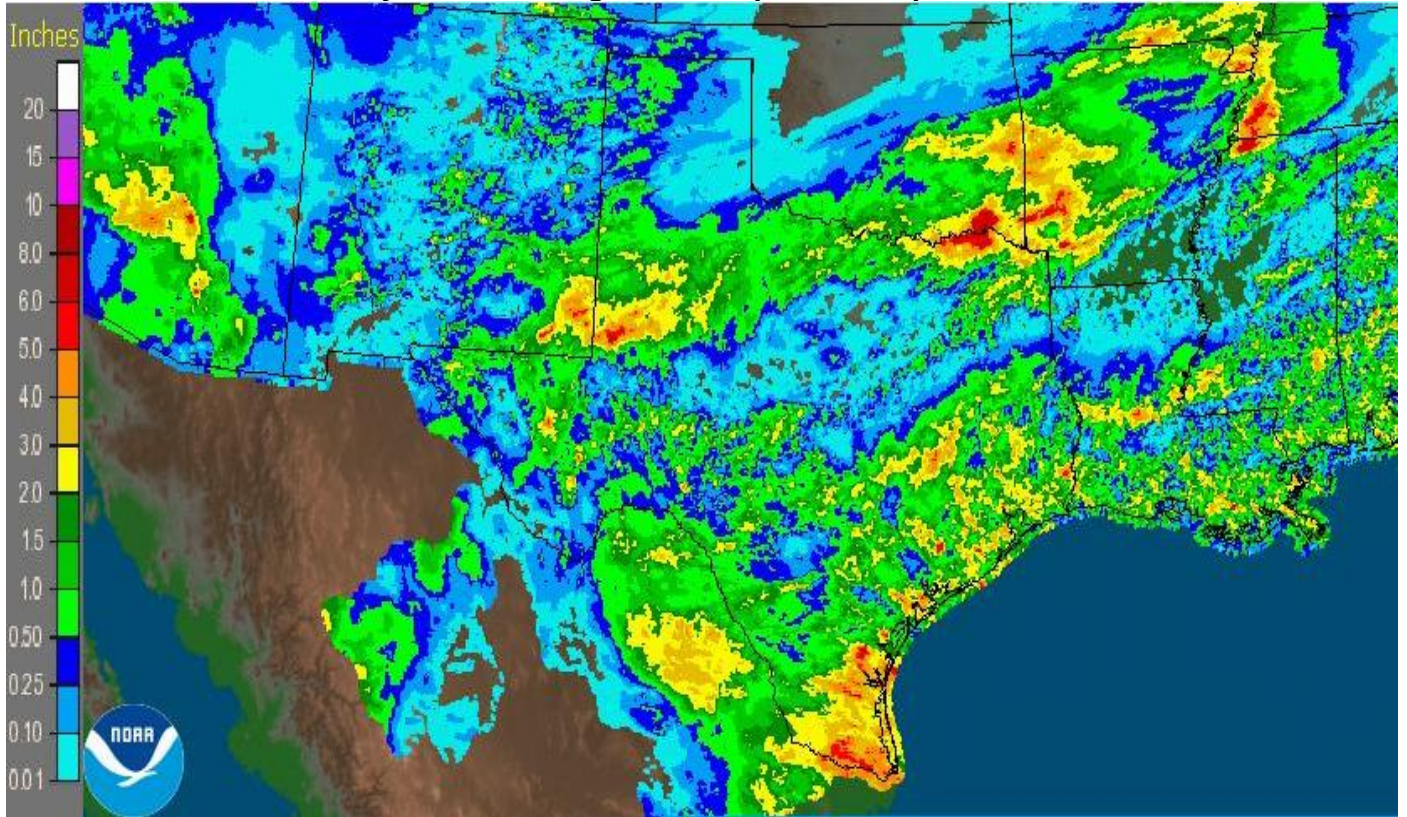
District	Topsoil Moisture Condition by District				Subsoil Moisture Condition by District				Days Suitable for Fieldwork
	Percentage of Acreage				Percentage of Acreage				
	Very Short	Short	Adequate	Surplus	Very Short	Short	Adequate	Surplus	
11	26	28	45	1	31	29	33	7	5.2
12	23	24	49	4	24	45	29	2	4.3
21	15	26	50	9	15	38	41	6	6.1
22	30	52	17	1	34	50	16	0	5.4
30	30	48	21	1	34	47	19	0	6.4
40	34	29	32	5	28	35	35	2	5.8
51	12	33	52	3	8	31	58	3	5.8
52	27	30	38	5	21	36	38	5	6.2
60	31	32	36	1	24	51	24	1	6.7
70	23	48	27	2	23	47	28	2	5.6
81	35	46	17	2	39	49	11	1	6.0
82	26	17	31	26	29	46	21	4	5.0
90	5	36	47	12	6	21	62	11	4.0
96	25	53	22	0	26	55	19	0	5.1
97	0	29	44	27	6	65	5	24	4.8
State	25	39	33	3	25	44	28	3	5.2

Texas Agricultural Districts

- 11 Northern High Plains
- 12 Southern High Plains
- 21 Northern Low Plains
- 22 Southern Low Plains
- 30 Cross Timbers
- 40 Blacklands
- 51 North East
- 52 South East
- 60 Trans-Pecos
- 70 Edwards Plateau
- 81 South Central
- 82 Coastal Bend
- 90 Upper Coast
- 96 South
- 97 Lower Valley



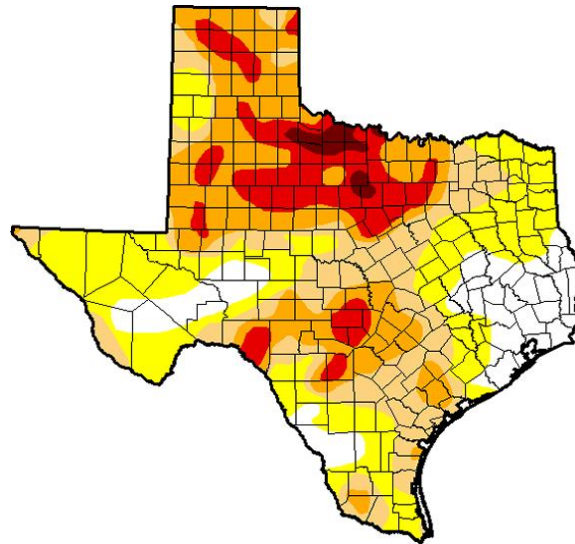
Seven Day Observed Regional Precipitation, September 14, 2014



Source: National Weather Service, www.nws.noaa.gov

Drought Monitor

Valid September 9, 2014



Intensity:

D0 Abnormally Dry	D3 Extreme Drought
D1 Moderate Drought	D4 Exceptional Drought
D2 Severe Drought	

Source: National Drought Mitigation Center, a partnership with USDA, U.S. Department of Commerce/NOAA, <http://droughtmonitor.unl.edu/>