



# Texas Crop Progress and Condition

Southern Plains Regional Field Office  
Post Office Box 70 Austin, Texas 78767  
(800) 626-3142 · FAX (855) 270-2725 · www.nass.usda.gov/tx

Issue: TX-CW3914

Weekly Summary for September 29 - October 5

Released October 6, 2014

**Summary:** Much of the state's rainfall last week was seen in areas of East Texas, the Upper Coast, and the Coastal Blend, totaling up to 3 inches. Scattered showers totaling less than 1 inch were seen in areas of the Blacklands, South Texas, South Central Texas, and in the Plains. The rest of the state received minimal rainfall.

**Small Grains:** Field preparations for small grains continued in areas of South Central Texas and the Edwards Plateau, while seeding remained active across most areas of the state. Lack of adequate moisture slowed winter wheat seeding in areas of the Cross Timbers, while recent rainfall encouraged oat seeding in South Texas. Early sown winter wheat was emerging in the Northern High Plains.

**Row Crops:** Cotton bolls were opening in areas of the Southern Low Plains, Trans-Pecos, and Cross Timbers, while harvest continued in the Blacklands, Upper Coast, and South Texas. Cotton defoliation was active in areas of the Edwards Plateau and Northern High Plains. Corn harvest continued across the state with harvest wrapping up in areas of the Blacklands. Some corn silage harvest was active in the Northern High Plains. Sorghum harvest continued across the state. Some peanut producers in the Northern Low Plains anticipate harvest in the upcoming week, while peanut fields in areas of South Texas were undergoing preparation for digging. Sunflower and soybean harvest continued across the state. Rice harvest reached completion across the state.

**Fruit, Vegetable and Specialty Crops:** Cabbage and spinach seeding was active in areas of South Texas. Sesame continued to progress in areas of the Edwards Plateau. Some pecan producers in the Trans-Pecos were waiting for western varieties to progress to the shuck-separation stage. Chile harvest was underway in areas of the Trans-Pecos.

**Livestock, Range and Pasture:** Livestock remained in good condition throughout most of the state. Some livestock producers in East Texas continued calf weaning, while some producers in dry areas of South Texas began to provide supplemental feed for cattle. Range and pasture continued to improve in areas of the Lower Valley, Northern High Plains, and the Blacklands. Winter pasture seeding was active in areas of the Blacklands and Upper Coast, while armyworm populations were causing persistent damage to emerging winter pasture in areas of South Central Texas.

Crop Progress				
Stage	Percent of Acreage			
	Current	Prev. Week	Prev. Year <sup>1</sup>	5 Year Avg <sup>2</sup>
<b>Corn</b>				
Mature	79	76	N/A	93
Harvested	69	68	N/A	74
<b>Cotton</b>				
Bolls Opening	60	50	N/A	73
Harvested	19	17	N/A	17
<b>Peanuts</b>				
Harvested	5	2	N/A	22
<b>Rice</b>				
Harvested	100	98	N/A	100
<b>Sorghum</b>				
Coloring	96	95	N/A	93
Mature	90	89	N/A	77
Harvested	73	68	N/A	67
<b>Soybeans</b>				
Dropping Leaves	85	71	N/A	91
Harvested	50	38	N/A	73
<b>Sunflowers</b>				
Harvested	83	82	N/A	52
<b>Winter Wheat</b>				
Planted	54	41	N/A	49
Emerging	31	13	N/A	21
<b>Oats</b>				
Planted	41	16	N/A	42
Emerging	5	N/A	N/A	7

<sup>1</sup> Due to a lapse in federal funding in October 2013, the Crop Progress reports for the weeks ending October 6, 2013 and October 13, 2013 were canceled. Therefore, previous year estimates for the corresponding weeks will not be available.

<sup>2</sup> Five-year average estimates will reflect the years 2009-2013 using published estimates for 2009-2012 and imputed estimates for 2013.

### Crop Condition

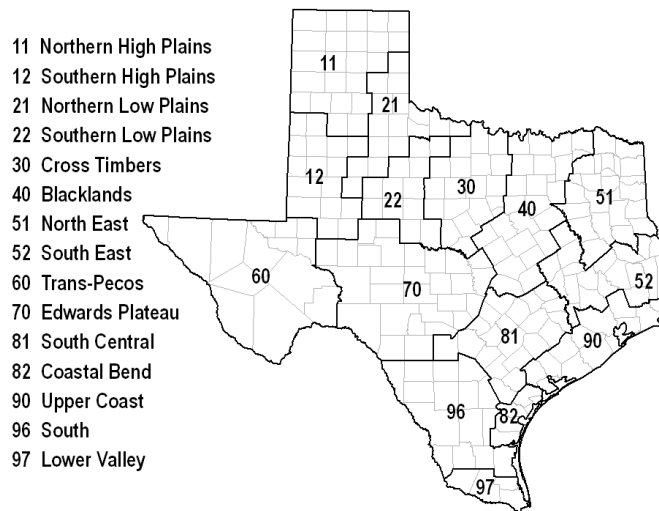
Crop	Percent of Acreage					Index <sup>1</sup>	
	Excellent	Good	Fair	Poor	Very Poor	2014	2013
Corn	18	49	27	5	1	81	75
Cotton	7	25	38	19	11	58	55
Peanuts	9	48	22	12	9	70	71
Rice	7	53	35	5	0	78	75
Sorghum	12	46	31	9	2	76	76
Soybeans	8	44	43	4	1	75	68
Range and Pasture	5	27	40	18	10	--	--

<sup>1</sup> The formula for the condition index is  $I = (5V + 25P + 60F + 90G + 110E)/100$  where I = crop condition index and V, P, F, G, E = percentage of crop rated very poor, poor, fair, good, excellent.

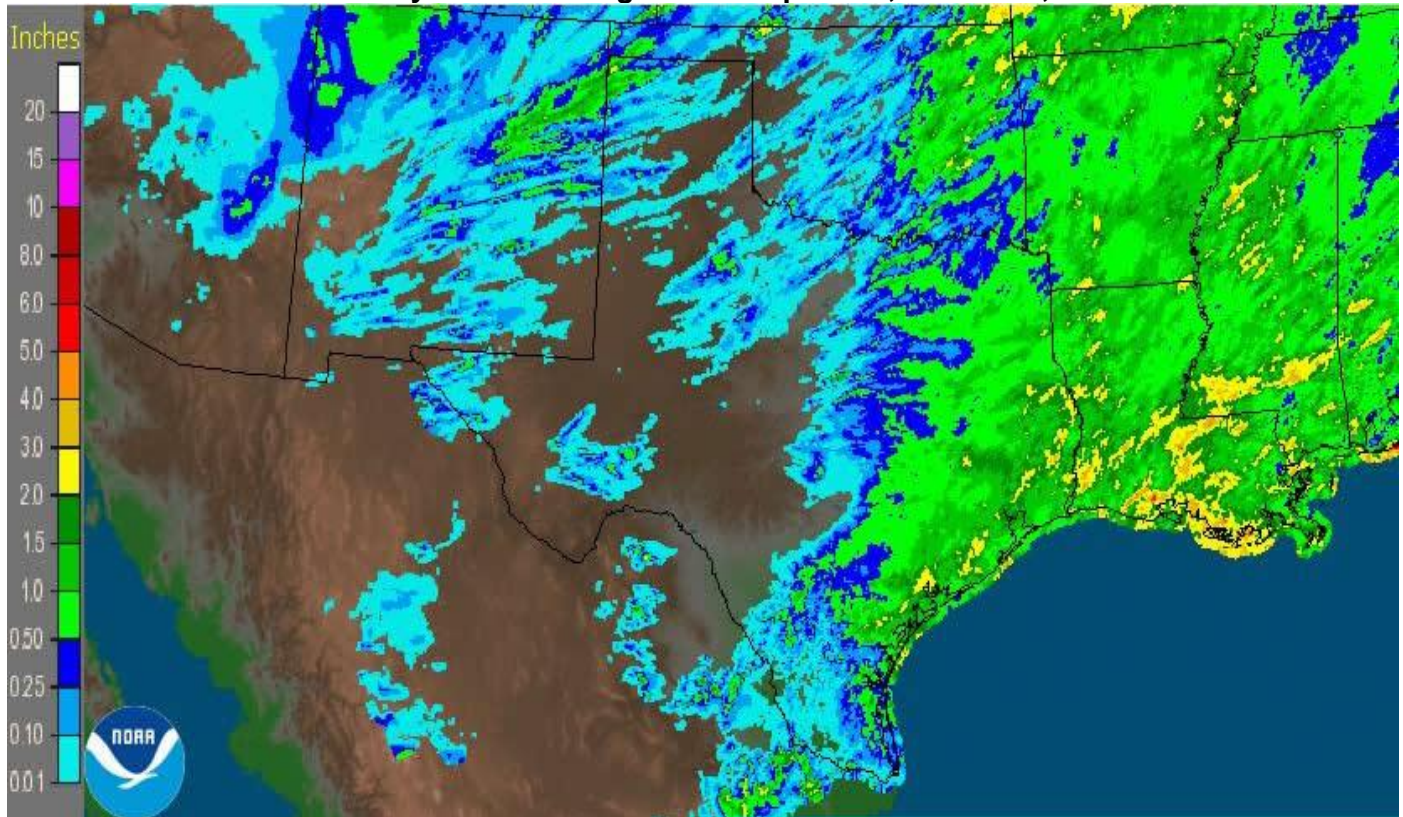
### Top Soil Moisture Condition by District

District	Topsoil Moisture Condition by District				Subsoil Moisture Condition by District				Days Suitable for Fieldwork
	Percentage of Acreage				Percentage of Acreage				
	Very Short	Short	Adequate	Surplus	Very Short	Short	Adequate	Surplus	
11	19	37	42	2	28	31	39	2	6.6
12	11	15	60	14	10	33	44	13	5.8
21	13	30	48	9	11	37	47	8	6.8
22	24	46	27	3	26	35	36	3	6.0
30	29	51	20	0	37	49	14	0	6.5
40	26	26	45	3	17	36	46	1	6.1
51	14	35	49	2	10	38	49	2	6.5
52	21	21	51	7	19	23	51	7	6.1
60	15	28	54	3	18	37	41	4	7.0
70	20	51	28	1	19	51	29	1	6.7
81	14	45	38	3	19	50	25	6	6.3
82	4	8	58	30	21	33	33	13	3.4
90	5	15	63	17	4	16	62	18	3.5
96	15	47	38	0	10	51	39	0	6.7
97	1	25	48	26	7	25	42	26	5.4
State	17	36	43	4	18	41	37	4	6.1

### Texas Agricultural Districts



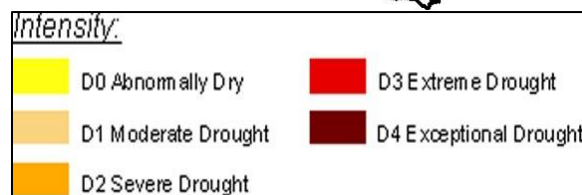
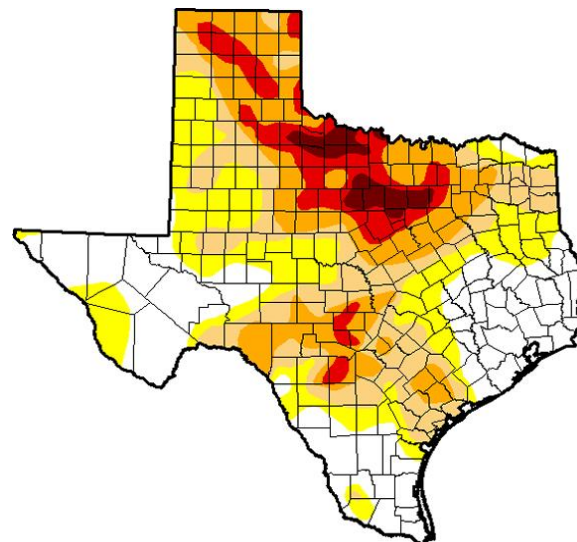
### Seven Day Observed Regional Precipitation, October 5, 2014



Source: National Weather Service, [www.nws.noaa.gov](http://www.nws.noaa.gov)

### Drought Monitor

Valid September 30, 2014



Source: National Drought Mitigation Center, a partnership with USDA, U.S. Department of Commerce/NOAA, <http://droughtmonitor.unl.edu/>