



Texas Crop Progress and Condition

Southern Plains Regional Field Office
Post Office Box 70 Austin, Texas 78767
(800) 626-3142 · FAX (855) 270-2725 · www.nass.usda.gov/tx

Issue: TX-CW115

Weekly Summary for March 23- March 29

Released: March 30, 2015

Warm, humid weather was reported throughout the state with minimal rainfall reported in most areas. Little to no rainfall was received in parts of the High and Low Plains and the Trans-Pecos. Other areas received from a quarter inch up to two inches of precipitation.

Small Grains: Warm weather aided development of wheat in the Southern Low Plains. Fertilization of wheat fields was active in the Blacklands. Wheat continued the heading stage in the Coastal Bend. Oats were reported in good condition in South Texas.

Crop Progress				
Stage	Percent of Acreage			
	Current	Prev. Week	Prev. Year	5 Year Avg
Corn				
Planted	20	14	27	43
Emerged	3	N/A	7	17
Cotton				
Planted	N/A	N/A	6	7
Rice				
Planted	N/A	N/A	9	25
Sorghum				
Planted	11	7	20	34
Winter Wheat				
Headed	2	N/A	6	7
Oats				
Headed	5	1	6	17

Row Crops: Southern Low Plains cotton producers began spraying fields for pests and weeds. Preparations for cotton planting were underway in many areas of the Edwards Plateau. Corn planting was delayed due to wet conditions in South East Texas, while in South Texas, early planted corn had emerged. Sorghum planting continued in South Texas and South Central Texas.

Fruit, Vegetable and Specialty Crops: Fruit trees had flowered in many areas of the Lower Valley and North East Texas. In South East Texas, vegetable planting was active, while in South Texas planting was delayed due to precipitation. Pecans in South Central Texas and the Edwards plateau began the bud break stage of development. Onion harvest started in the Lower Valley.

Livestock, Range and Pasture: Supplemental feeding of livestock continued in the Northern High Plains. Livestock conditions were rated fair to good. Spring and summer pasture grasses began greening up from recent rainfall in many areas of the state.

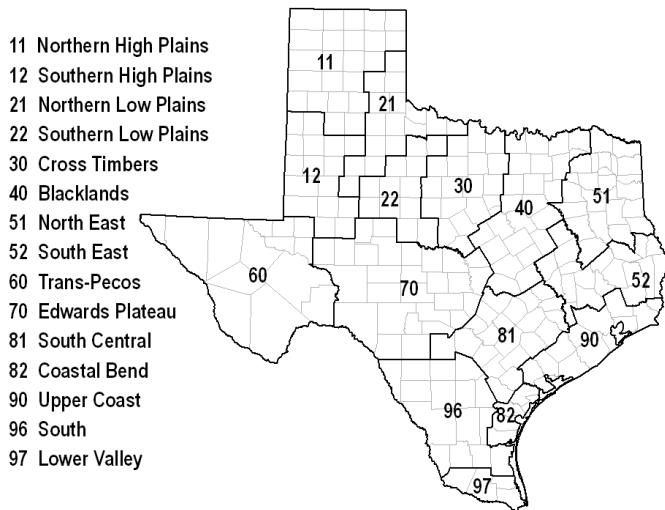
Crop Condition							
Crop	Percent of Acreage					Index ¹	
	Excellent	Good	Fair	Poor	Very Poor	2015	2014
Wheat	12	43	36	7	2	75	39
Oats	11	46	32	8	3	75	58
Range and Pasture	11	36	36	12	5	--	--

¹ The formula for the condition index is $I = (5V + 25P + 60F + 90G + 110E)/100$ where I = crop condition index and V, P, F, G, E = percentage of crop rated very poor, poor, fair, good, excellent.

Top Soil Moisture Condition by District

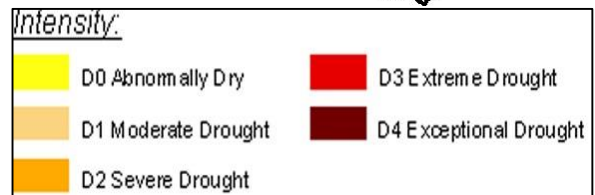
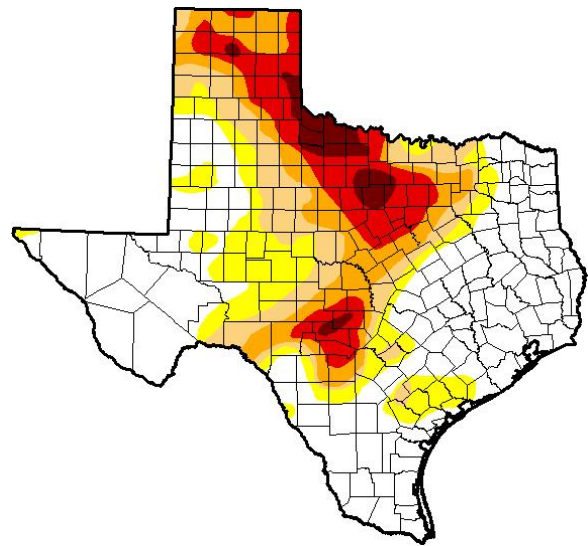
District	Topsoil Moisture Condition by District				Subsoil Moisture Condition by District				Days Suitable for Fieldwork
	Percentage of Acreage				Percentage of Acreage				
	Very Short	Short	Adequate	Surplus	Very Short	Short	Adequate	Surplus	
11	17	38	45	0	18	48	34	0	6.2
12	12	35	52	1	7	49	43	1	5.8
21	6	52	40	2	7	44	49	0	6.1
22	3	34	58	5	4	21	70	5	5.0
30	4	16	76	4	13	26	60	1	4.7
40	0	5	52	43	1	5	65	29	2.2
51	5	5	37	53	6	4	43	47	4.1
52	3	7	37	53	2	8	40	50	3.4
60	19	25	44	12	20	19	49	12	7.0
70	13	18	61	8	13	22	57	8	6.1
81	1	9	74	16	1	12	80	7	5.2
82	0	1	6	93	1	3	7	89	1.0
90	0	1	27	72	0	1	60	39	1.5
96	1	20	48	31	3	24	70	3	4.8
97	0	8	36	56	3	11	50	36	6.0
State	7	23	51	19	7	27	53	13	4.9

Texas Agricultural Districts



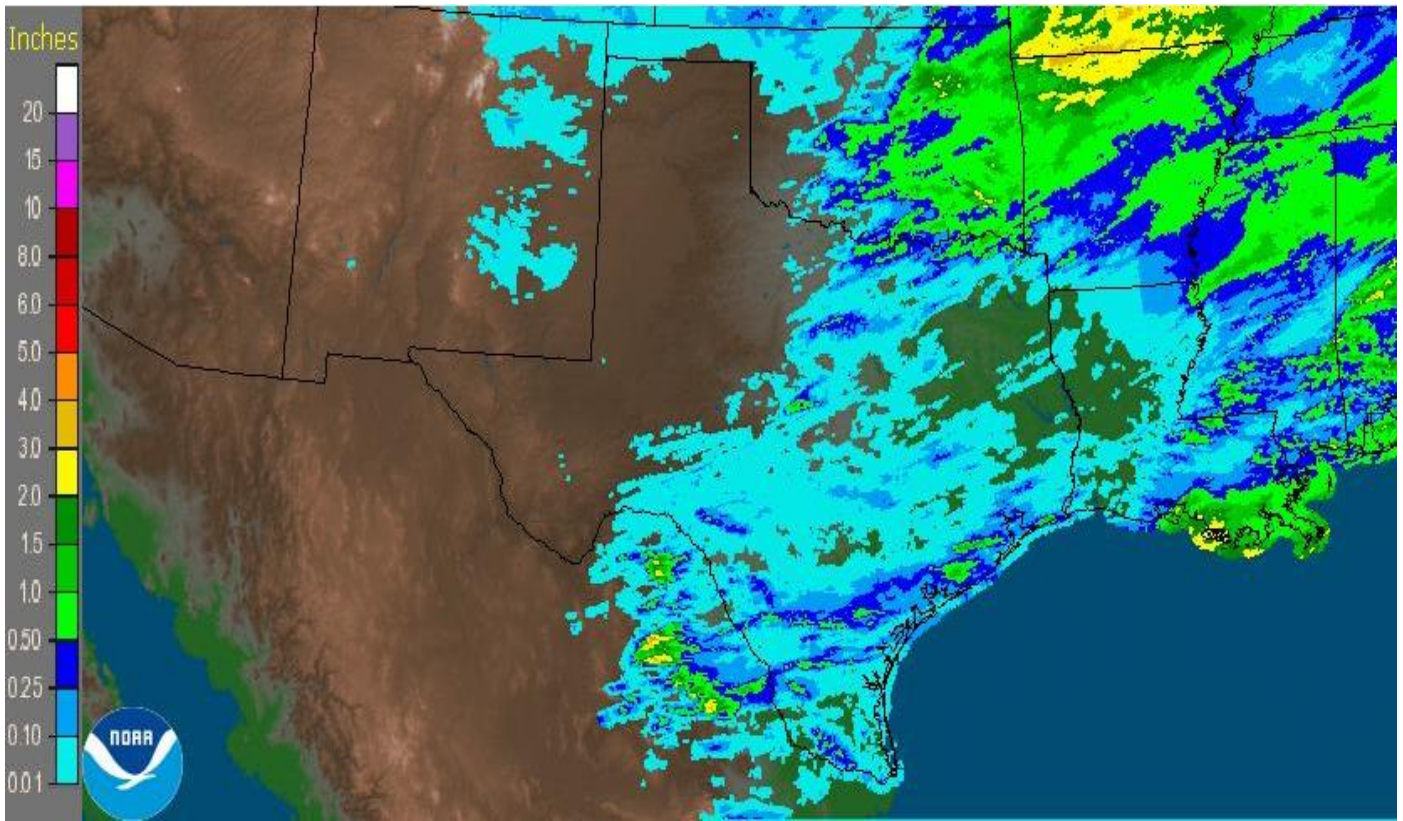
Drought Monitor

Valid March 24, 2015



Source: National Drought Mitigation Center, a partnership with USDA, U.S. Department of Commerce/NOAA, <http://droughtmonitor.unl.edu/>

Seven Day Observed Regional Precipitation, March 29, 2015



Source: National Weather Service, www.nws.noaa.gov