



# Texas Crop Progress and Condition

Southern Plains Regional Field Office  
Post Office Box 70 Austin, Texas 78767  
(800) 626-3142 · FAX (855) 270-2725 · www.nass.usda.gov/tx

**Issue: TX-CW145**

**Weekly Summary for April 13- April 19**

**Released: April 20, 2015**

Most of the state received precipitation last week. Areas of the Trans-Pecos received only 0.01 inches while areas of the Upper coast received up to 15 inches. Strong winds and hail were reported in several areas.

**Small Grains:** Winter wheat progressed in most areas of the state; however, a lack of moisture combined with warm temperature stressed wheat in Northern High Plains. Oats continued to progress in areas of the Blacklands, the Cross Timbers, the Edwards Plateau, and the Lower Valley.

**Row Crops:** Cotton planting preparations continued in the High Plains, meanwhile planting was slowed due to rainfall in the South East and the Upper Coast. Corn and sorghum planting remained active throughout the state, with corn beginning to emerge in areas of the Blacklands. Rice planting was delayed in the Upper Coast due to recent rainfall.

**Fruit, Vegetable and Specialty Crops:** Vegetables progressed in North East Texas. Vegetable harvest was delayed in the Lower Valley due to wet fields. Onions progressed in South Texas, while pecan trees put on foliage in the Trans-Pecos.

**Livestock, Range and Pasture:** Livestock conditions were good across the state. Grazing was more prevalent as range and pasture conditions improved where precipitation and warmer temperatures occurred.

Stage		Crop Progress			
		Percent of Acreage			
		Current	Prev. Week	Prev. Year	5 Year Avg
<b>Corn</b>					
	Planted	51	46	60	59
	Emerged	37	22	48	50
<b>Cotton</b>					
	Planted	7	5	12	14
<b>Rice</b>					
	Planted	61	54	71	78
	Emerged	30	15	48	57
<b>Sorghum</b>					
	Planted	46	39	58	57
<b>Soybeans</b>					
	Planted	12	3	20	46
<b>Sunflowers</b>					
	Planted	10	N/A	2	9
<b>Winter Wheat</b>					
	Headed	50	22	31	36
<b>Oats</b>					
	Headed	40	7	43	63

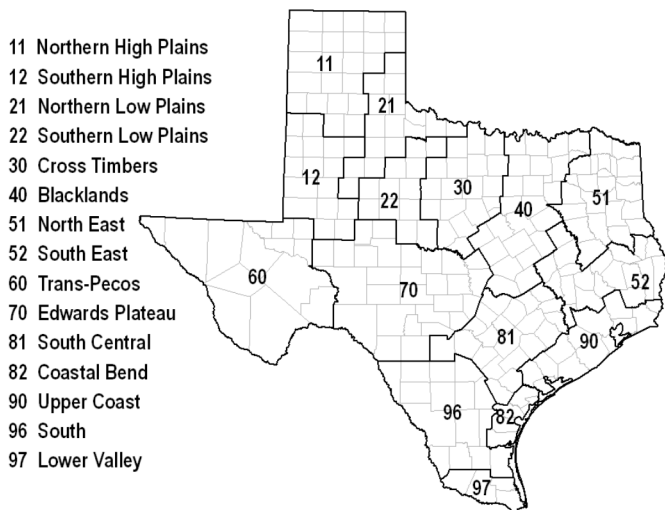
Crop	Crop Condition					Index <sup>1</sup>	
	Percent of Acreage					2015	2014
	Excellent	Good	Fair	Poor	Very Poor		
Wheat	11	40	35	10	4	72	36
Oats	9	51	29	9	2	76	59
Range and Pasture	18	43	28	8	3		

<sup>1</sup> The formula for the condition index is  $I = (5V + 25P + 60F + 90G + 110E)/100$  where I = crop condition index and V, P, F, G, E = percentage of crop rated very poor, poor, fair, good, excellent.

### Top Soil Moisture Condition by District

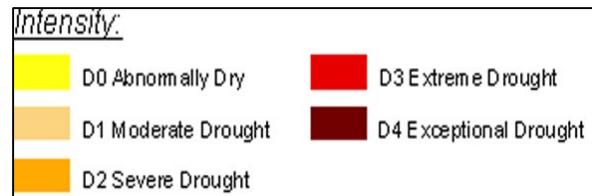
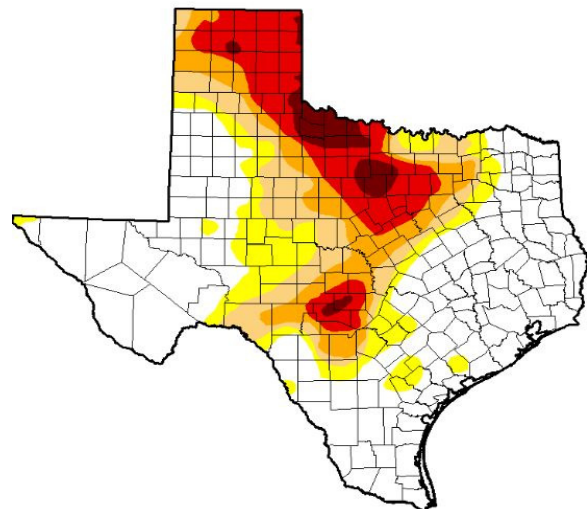
District	Topsoil Moisture Condition by District				Subsoil Moisture Condition by District				Days Suitable for Fieldwork
	Percentage of Acreage				Percentage of Acreage				
	Very Short	Short	Adequate	Surplus	Very Short	Short	Adequate	Surplus	
11	27	34	38	1	23	54	23	0	5.4
12	9	26	60	5	9	36	52	3	5.3
21	3	19	68	10	6	36	56	2	4.5
22	3	51	38	8	4	20	72	4	4.1
30	2	28	65	5	12	28	59	1	5.5
40	1	5	68	26	0	8	74	18	4.1
51	6	4	47	43	6	5	44	45	3.6
52	2	9	36	53	3	9	43	45	3.8
60	18	32	43	7	19	20	49	12	6.8
70	2	30	57	11	2	28	60	10	5.2
81	1	4	66	29	0	9	77	14	3.4
82	0	0	7	93	0	1	8	91	0.0
90	0	2	27	71	1	0	29	70	1.4
96	0	3	78	19	0	12	77	11	2.9
97	0	1	15	84	1	1	61	37	5.7
State	8	21	51	20	8	26	51	15	4.4

### Texas Agricultural Districts



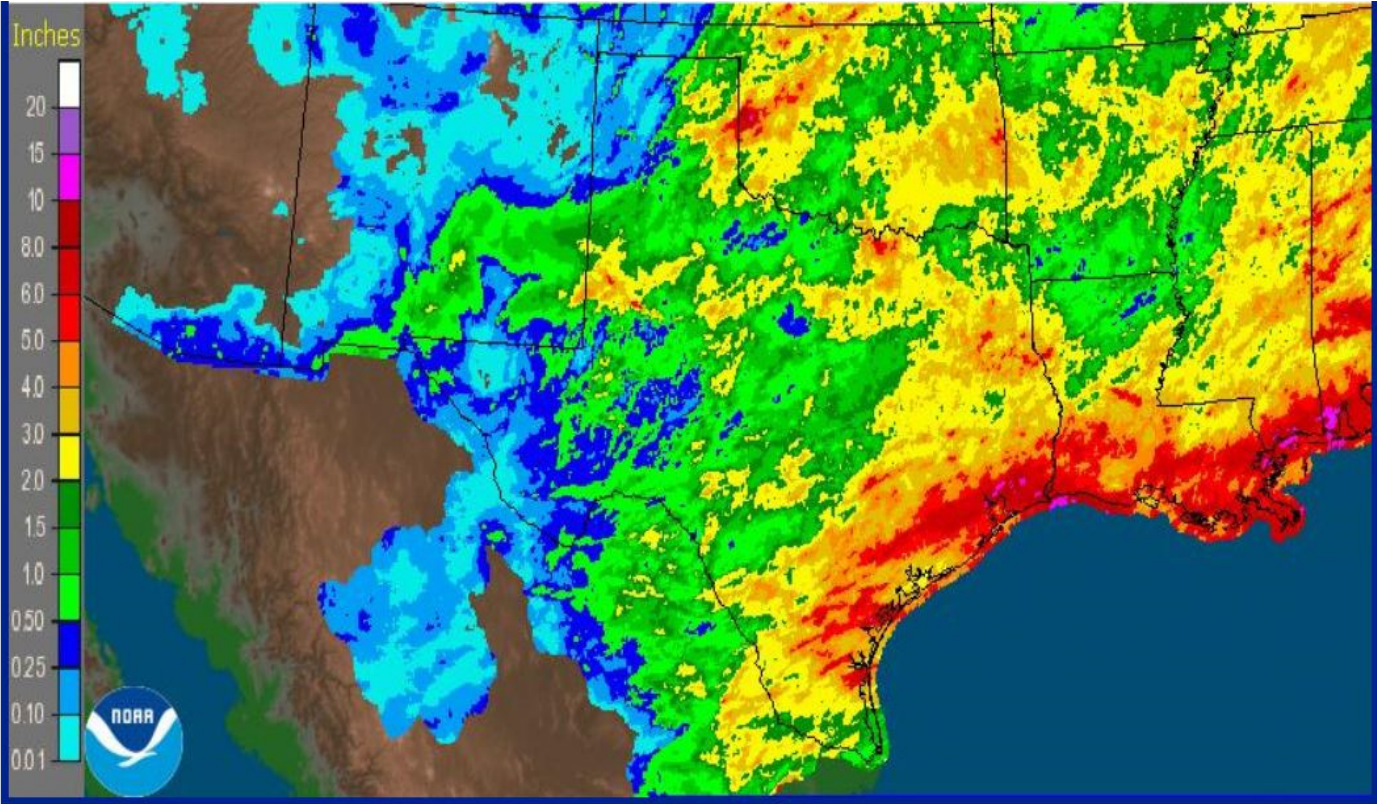
### Drought Monitor

Valid April 14, 2015



Source: National Drought Mitigation Center, a partnership with USDA, U.S. Department of Commerce/NOAA, <http://droughtmonitor.unl.edu/>

Seven Day Observed Regional Precipitation, April 19, 2015



Source: National Weather Service, [www.nws.noaa.gov](http://www.nws.noaa.gov)