



Texas Crop Progress and Condition

Southern Plains Regional Field Office
Post Office Box 70 Austin, Texas 78767
(800) 626-3142 · FAX (855) 270-2725 · www.nass.usda.gov/tx

Issue: TX-CW1515

Weekly Summary for April 20- April 26

Released: April 27, 2015

Most areas of the state reported measurable rainfall for the week. Areas of the Blacklands and South Central Texas received up to 8 inches of rain while the Southern High Plains and the Trans Pecos reported totals from a quarter to a half inch. A few scattered areas of the Southern High Plains reported no precipitation. Hail damage and strong winds were reported in areas of the Northern Plains, the Southern Low Plains, the Upper Coast, and South Texas.

Small Grains: Winter wheat and oats continued to mature throughout the state, with hail damage reported in areas of the High Plains. Areas of South Central Texas experienced some damage due to high winds.

Crop Progress				
Stage	Percent of Acreage			
	Current	Prev. Week	Prev. Year	5 Year Avg
Corn				
Planted	56	51	63	66
Emerged	49	37	54	56
Cotton				
Planted	9	7	15	17
Peanuts				
Planted	1	N/A	2	3
Rice				
Planted	64	61	78	87
Emerged	61	30	64	69
Sorghum				
Planted	57	46	66	61
Soybeans				
Planted	21	12	26	56
Emerged	3	N/A	3	9
Sunflowers				
Planted	38	10	13	21
Winter Wheat				
Headed	60	50	48	51
Oats				
Headed	65	40	67	78

Row Crops: Cotton planting remained active in areas of the Northern Plains, meanwhile cotton emerged in areas of South Texas. Corn, sorghum, and soybeans continued to progress with aid from last week's rainfall. Areas of the Northern High Plains continued planting corn while the Blacklands experienced planting delays due to heavier rainfall.

Fruit, Vegetable and Specialty Crops: Vegetables progressed in North East Texas. Watermelon transplanting began in areas of South Texas, while pecan trees continued to progress in the Trans-Pecos.

Livestock, Range and Pasture: Livestock conditions continued to improve as a result of rainfall and improving pasture conditions; however, areas of the North East reported mosquitos, stress, and feet problems. Range and pasture continued to progress across the state allowing for adequate forage for livestock.

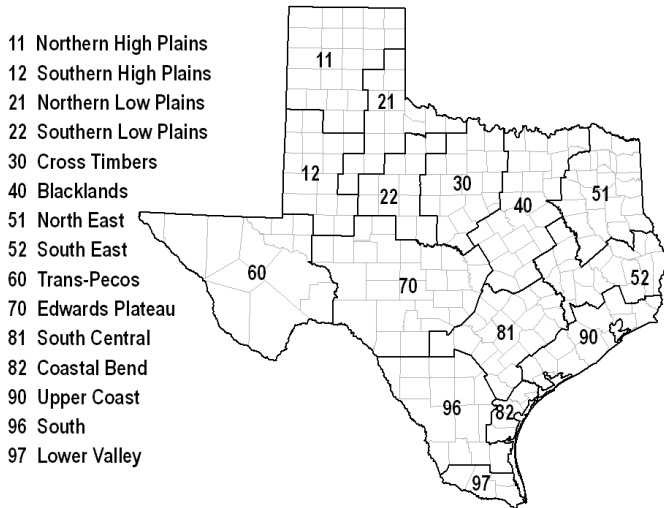
Crop Condition							
Crop	Percent of Acreage					Index ¹	
	Excellent	Good	Fair	Poor	Very Poor	2015	2014
Wheat	11	41	33	10	5	72	--
Oats	12	50	28	8	2	77	--
Range and Pasture	19	44	27	7	3	--	--

¹ The formula for the condition index is $I = (5V + 25P + 60F + 90G + 110E)/100$ where I = crop condition index and V, P, F, G, E = percentage of crop rated very poor, poor, fair, good, excellent.

Top Soil Moisture Condition by District

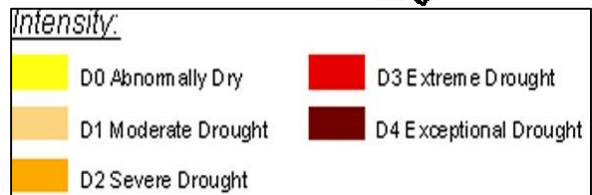
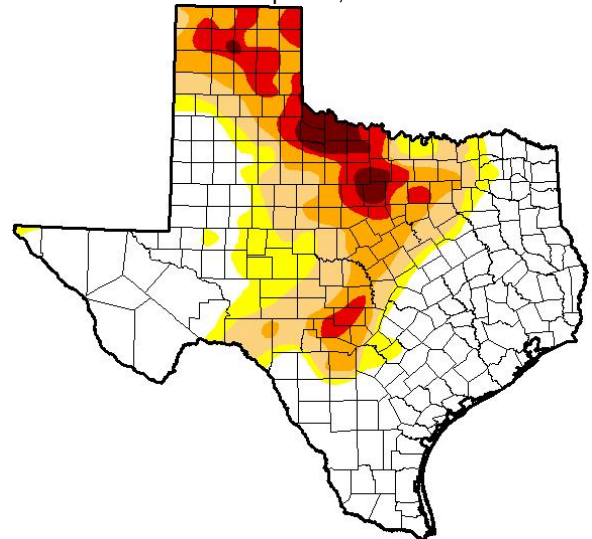
District	Topsoil Moisture Condition by District				Subsoil Moisture Condition by District				Days Suitable for Fieldwork
	Percentage of Acreage				Percentage of Acreage				
	Very Short	Short	Adequate	Surplus	Very Short	Short	Adequate	Surplus	
11	13	41	44	2	21	52	27	0	4.9
12	3	35	58	4	2	45	50	3	6.4
21	4	21	70	5	7	34	56	3	5.6
22	3	44	43	10	4	16	76	4	4.0
30	2	23	69	6	13	26	60	1	4.4
40	1	9	44	46	1	3	64	32	3.6
51	6	5	37	52	6	2	41	51	4.1
52	1	7	34	58	1	8	47	44	3.8
60	19	34	41	6	18	22	48	12	6.5
70	1	25	62	12	3	21	63	13	4.8
81	0	4	65	31	1	7	75	17	4.0
82	0	0	10	90	0	1	7	92	0.0
90	0	2	28	70	1	0	31	68	1.7
96	0	2	75	23	0	18	66	16	2.9
97	0	1	13	86	1	1	59	39	2.6
State	4	23	50	23	6	25	52	17	4.4

Texas Agricultural Districts



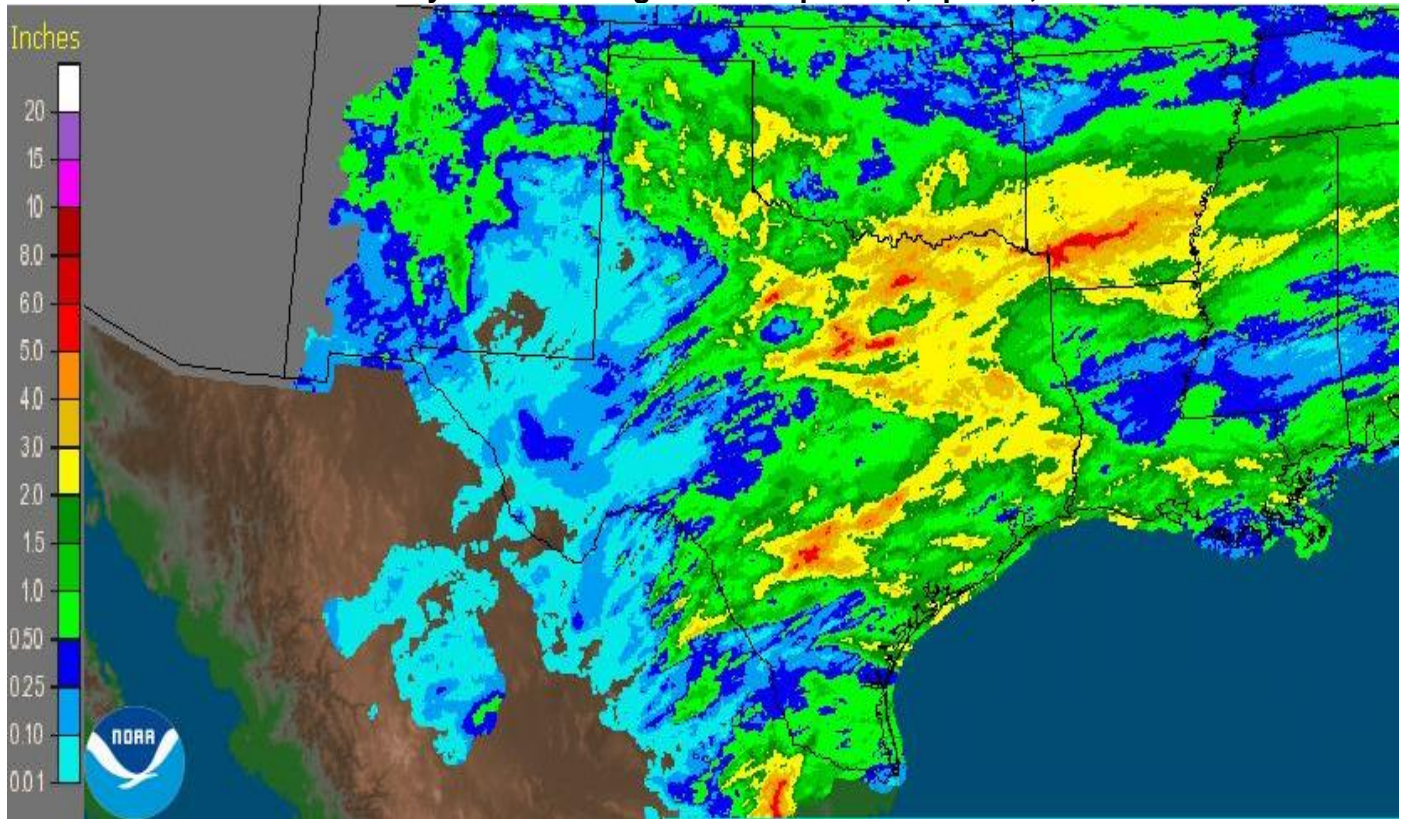
Drought Monitor

Valid April 21, 2015



Source: National Drought Mitigation Center, a partnership with USDA, U.S. Department of Commerce/NOAA, <http://droughtmonitor.unl.edu/>

Seven Day Observed Regional Precipitation, April 26, 2015



Source: National Weather Service, www.nws.noaa.gov