



Texas Crop Progress and Condition

Southern Plains Regional Field Office
Post Office Box 70 Austin, Texas 78767
(800) 626-3142 · FAX (855) 270-2725 · www.nass.usda.gov/tx

Issue: TX-CW1815

Weekly Summary for May 11- May 17

Released: May 18, 2015

Much of the state experienced rainfall last week from trace amounts to upwards of 10 inches. Areas of the Blacklands, the North East, the Coastal Bend, and South Texas reached upwards of 10 inches while the Trans-Pecos and the Southern High Plains received only trace amounts. Strong winds and hail storms caused damage to crops throughout many areas of the state again last week.

Small Grains: Winter wheat and oats continued to progress; however, strong winds and hail caused damage to both crops in areas of the Cross Timbers and the Blacklands. Continued rainfall delayed wheat and oat harvest in areas of South Central, the Upper Coast, the Coastal Blend, and South Texas.

Row Crops: Planting of row crops across the state experienced delays due to rainfall this past week. Corn, cotton and sorghum progressed in South Central Texas, the Lower Valley, and South Texas. Corn reached the silking stage in areas of the Lower Valley and South Texas.

Fruit, Vegetable and Specialty Crops: Onions yet to be harvested may be lost due to wet fields in areas of South Texas. In areas of the Trans-Pecos pecan trees were in good condition and at full bloom stage, while in South Texas producers prepared to plant peanuts.

Livestock, Range and Pasture: Range and pasture was rated good to fair. Stock tank levels were at capacity in most areas and livestock conditions continued to improve throughout the state.

Crop Progress				
Stage	Percent of Acreage			
	Current	Prev. Week	Prev. Year	5 Year Avg
Corn				
Planted	75	71	91	91
Emerged	73	64	77	75
Silked	9	3	9	15
Cotton				
Planted	19	16	34	36
Squaring	3	2	3	6
Peanuts				
Planted	17	8	41	59
Rice				
Planted	79	78	95	97
Emerged	75	72	85	86
Sorghum				
Planted	71	64	82	78
Headed	8	1	9	15
Soybeans				
Planted	61	60	47	80
Emerged	43	26	41	69
Sunflowers				
Planted	58	53	33	45
Winter Wheat				
Headed	96	89	87	87
Harvested	1	N/A	5	4
Oats				
Headed	99	97	93	95
Harvested	2	N/A	16	9

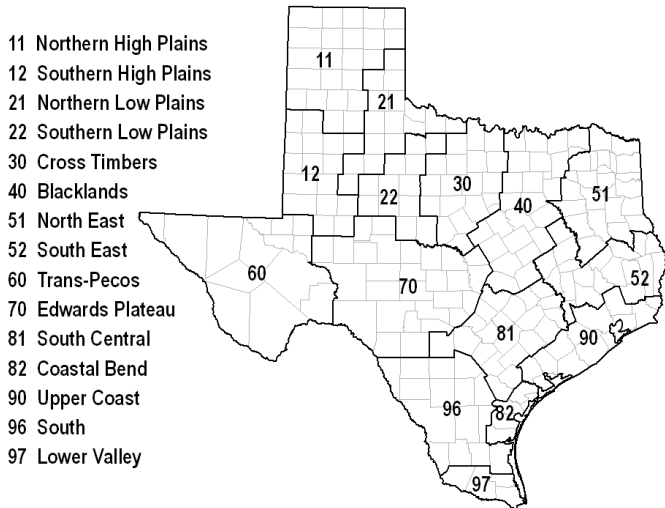
Crop	Crop Condition					Index ¹	
	Percent of Acreage					2015	2014
	Excellent	Good	Fair	Poor	Very Poor		
Corn	22	45	24	5	4	81	66
Rice	4	48	44	3	1	75	73
Sorghum	16	32	33	8	11	69	65
Wheat	13	43	30	10	4	74	33
Oats	11	48	24	13	4	73	56
Range and Pasture	23	48	24	4	1	--	--

¹ The formula for the condition index is $I = (5V + 25P + 60F + 90G + 110E)/100$ where I = crop condition index and V, P, F, G, E = percentage of crop rated very poor, poor, fair, good, excellent.

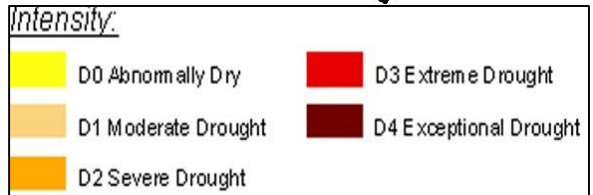
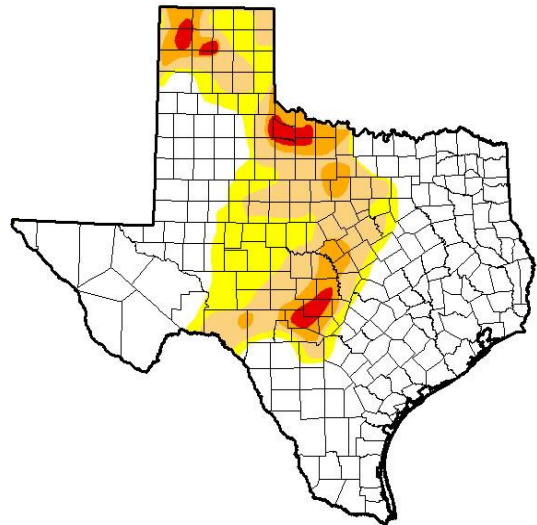
Top Soil Moisture Condition by District

District	Topsoil Moisture Condition by District				Subsoil Moisture Condition by District				Days Suitable for Fieldwork
	Percentage of Acreage				Percentage of Acreage				
	Very Short	Short	Adequate	Surplus	Very Short	Short	Adequate	Surplus	
11	0	10	66	24	6	21	66	7	2.5
12	2	12	66	20	3	16	67	14	3.6
21	1	6	49	44	1	14	61	24	2.4
22	0	20	65	15	0	13	80	7	2.3
30	1	4	62	33	1	14	74	11	1.9
40	0	0	35	65	0	1	46	53	0.7
51	6	0	39	55	6	1	37	56	1.7
52	2	7	19	72	1	7	23	69	2.2
60	10	20	58	12	19	23	39	19	6.6
70	3	15	62	20	4	17	57	22	1.8
81	1	6	52	41	0	6	72	22	4.0
82	0	0	17	83	0	0	6	94	0.0
90	0	1	34	65	0	1	43	56	1.4
96	0	1	61	38	0	6	64	30	3.2
97	1	1	84	14	1	1	83	15	6.2
State	1	7	57	35	2	11	62	25	2.5

Texas Agricultural Districts

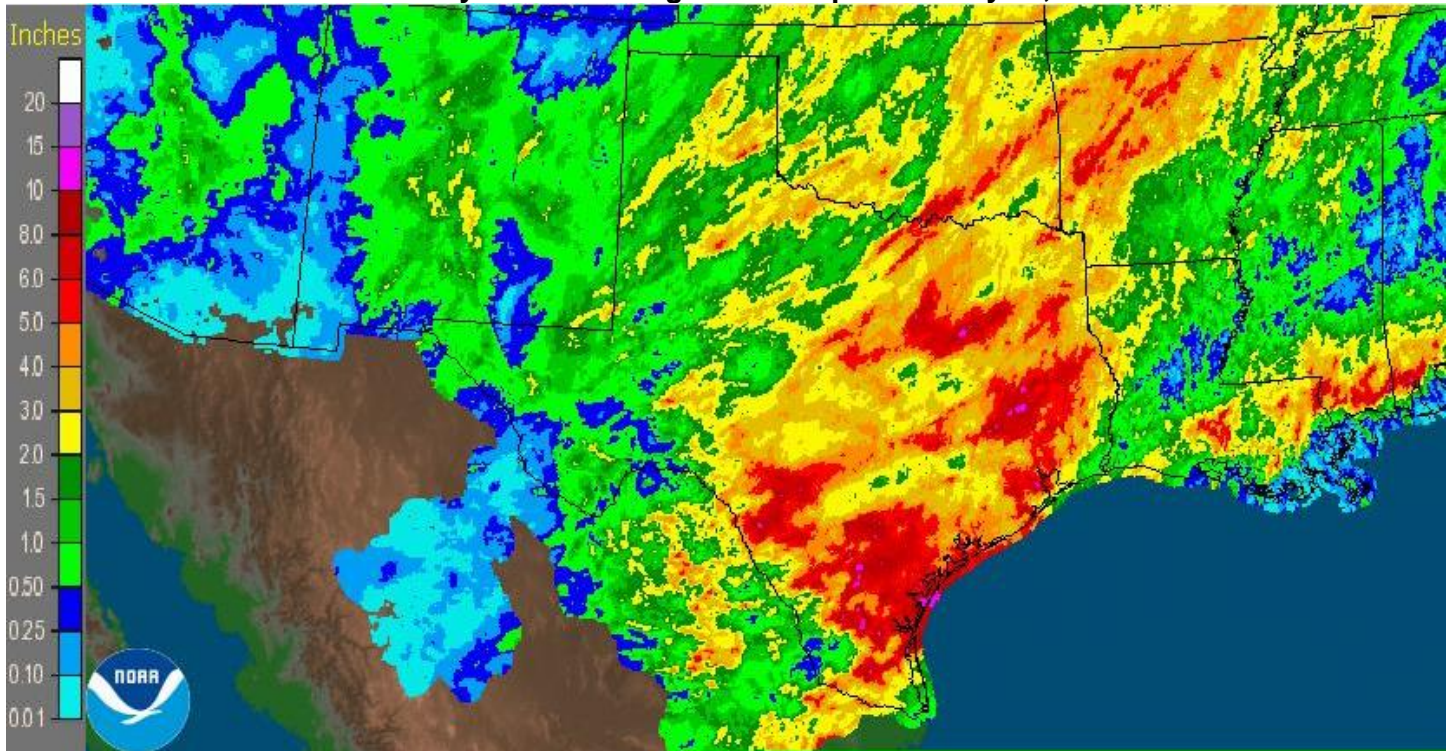


Drought Monitor
Valid May 12, 2015



Source: National Drought Mitigation Center, a partnership with USDA, U.S. Department of Commerce/NOAA, <http://droughtmonitor.unl.edu/>

Seven Day Observed Regional Precipitation May 17, 2015



Source: National Weather Service, www.nws.noaa.gov