



Texas Crop Progress and Condition

Southern Plains Regional Field Office
Post Office Box 70 Austin, Texas 78767
(800) 626-3142 · FAX (855) 270-2725 · www.nass.usda.gov/tx

Issue: TX-CW1915

Weekly Summary for May 18- May 24

Released: May 26, 2015

Thunderstorms moved across the state with many areas receiving measurable rainfall last week from trace amounts to upwards of 10 inches. Areas of the Edwards Plateau and South Central Texas received upwards of 10 inches. Unseasonably low temperatures and continued rainfall have delayed cotton and summer crop planting across the northern part of the state.

Small Grains:

Winter wheat and oats continued to progress; however, wet conditions have delayed harvest. Lodging of wheat and oats due to flooding and high winds was experienced in areas of the Cross Timbers, the Blacklands, the Edwards Plateau, the South Central, and South East Texas.

Row Crops:

Across the state planting of row crops was delayed due to rainfall this past week. Cotton planting at 29 percent was 21 points behind normal due to continued rainfall. Corn condition was rated good to fair and continued to progress across the state. Peanut planting was getting underway in South Texas, but progress was 26 points below last year and 41 points below normal.

Peanut planting was getting underway in South Texas, but progress was 26 points below last year and 41 points below normal.

Fruit, Vegetable and Specialty Crops:

Vegetable harvest has been delayed due to wet fields. Onion crop loss was experienced in areas of the Lower Valley due to rainfall. Some pecan producers applied fungicide in areas of the Edwards Plateau.

Livestock, Range and Pasture:

Range and pasture continued to progress, providing adequate feed, as livestock conditions continued to improve across the state. Some pasture saturation was experienced in areas of the Blacklands and North East Texas.

Crop Progress

Stage	Percent of Acreage			
	Current	Prev. Week	Prev. Year	5 Year Avg
Corn				
Planted	77	75	96	95
Emerged	74	73	87	82
Silked	15	9	17	26
Cotton				
Planted	29	19	47	50
Squaring	4	3	4	7
Peanuts				
Planted	32	17	58	73
Rice				
Planted	84	79	98	98
Emerged	81	75	94	90
Sorghum				
Planted	72	71	83	80
Headed	15	8	19	28
Soybeans				
Planted	69	61	63	87
Emerged	51	43	49	77
Sunflowers				
Planted	61	58	48	54
Winter Wheat				
Headed	98	96	93	92
Harvested	4	1	11	12
Oats				
Headed	100	99	98	97
Harvested	9	2	26	26

Crop Condition

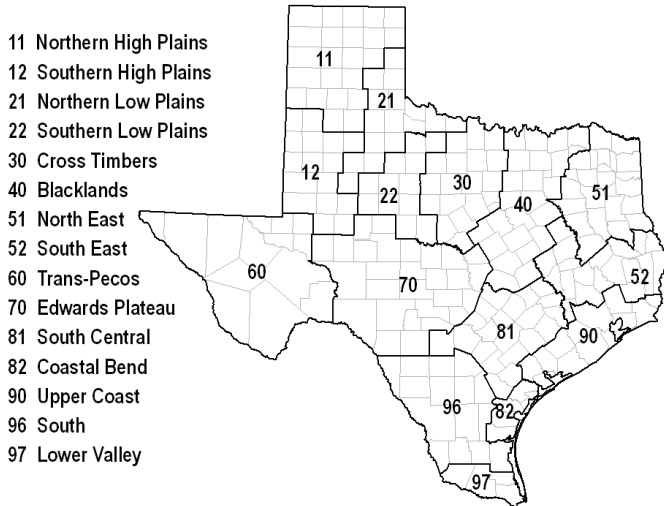
Crop	Percent of Acreage					Index ¹	
	Excellent	Good	Fair	Poor	Very Poor	2015	2014
Corn	22	47	23	4	4	82	68
Rice	5	47	43	4	1	75	73
Sorghum	18	33	31	8	10	71	68
Wheat	15	41	31	9	4	74	34
Oats	6	40	30	17	7	65	57
Range and Pasture	25	46	24	4	1	--	--

¹ The formula for the condition index is $I = (5V + 25P + 60F + 90G + 110E)/100$ where I = crop condition index and V, P, F, G, E = percentage of crop rated very poor, poor, fair, good, excellent.

Top Soil Moisture Condition by District

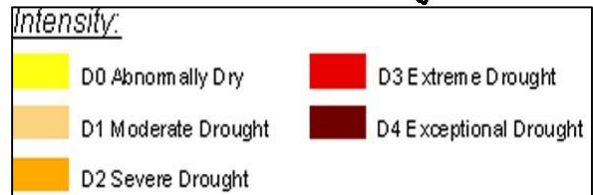
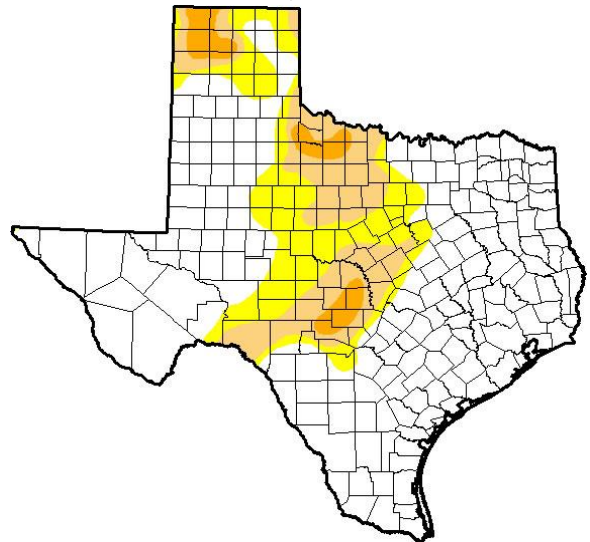
District	Topsoil Moisture Condition by District				Subsoil Moisture Condition by District				Days Suitable for Fieldwork
	Percentage of Acreage				Percentage of Acreage				
	Very Short	Short	Adequate	Surplus	Very Short	Short	Adequate	Surplus	
11	1	5	63	31	3	13	73	11	2.0
12	1	9	60	30	2	11	66	21	2.2
21	1	5	41	53	0	10	44	46	1.8
22	0	16	63	21	0	12	80	8	2.4
30	1	2	56	41	1	8	60	31	1.2
40	0	0	15	85	0	1	26	73	0.9
51	6	0	29	65	6	1	29	64	3.0
52	1	7	18	74	2	7	21	70	2.2
60	22	31	47	0	27	27	46	0	6.4
70	6	10	53	31	6	9	53	32	2.4
81	0	1	28	71	1	3	55	41	3.2
82	0	0	13	87	0	0	6	94	0.0
90	0	2	26	72	0	2	29	69	1.4
96	0	1	56	43	0	1	66	33	3.6
97	0	1	87	12	0	1	86	13	6.4
State	1	5	49	45	2	7	57	34	2.2

Texas Agricultural Districts



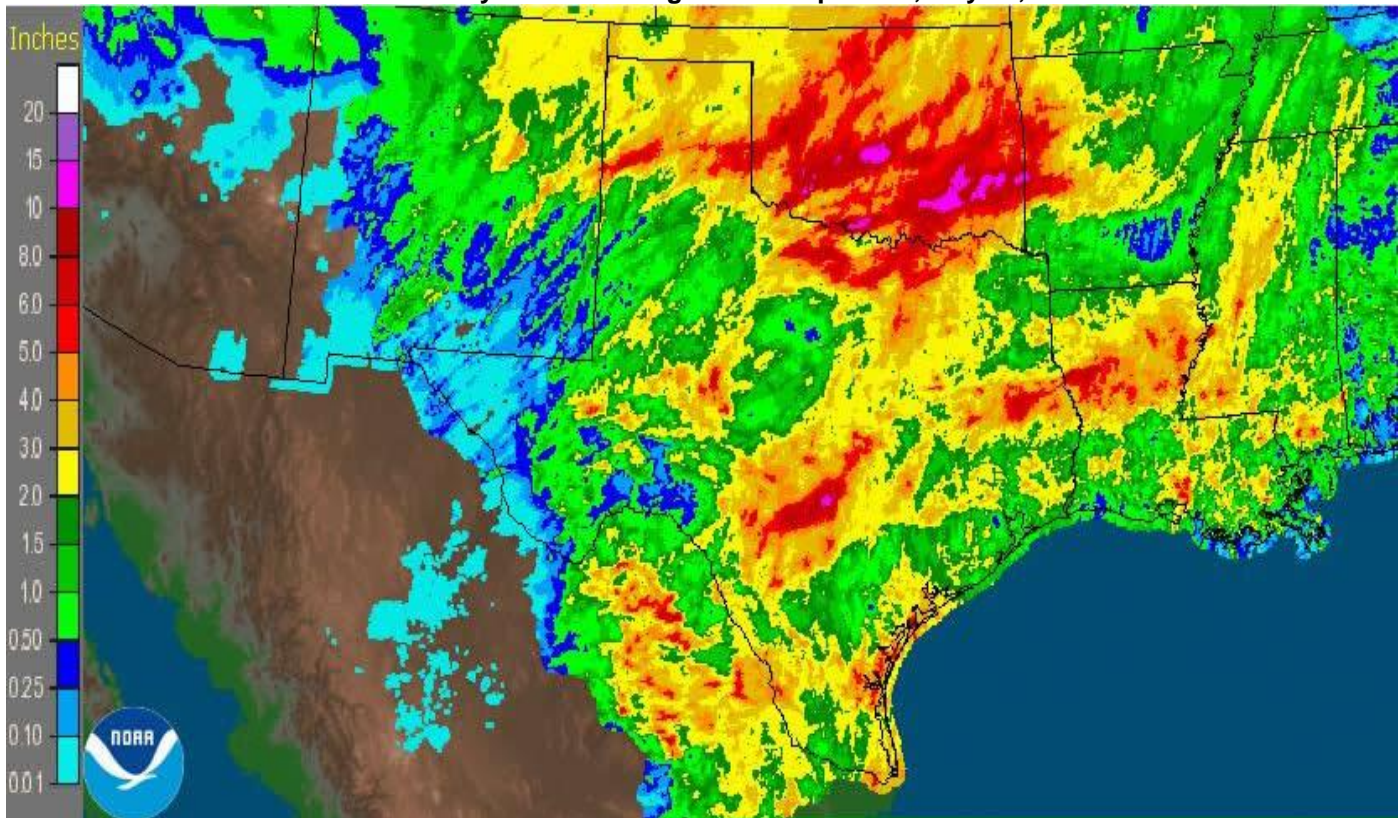
Drought Monitor

Valid May 19, 2015



Source: National Drought Mitigation Center, a partnership with USDA, U.S. Department of Commerce/NOAA, <http://droughtmonitor.unl.edu/>

Seven Day Observed Regional Precipitation, May 25, 2015



Source: National Weather Service, www.nws.noaa.gov