



# Texas Crop Progress and Condition

Southern Plains Regional Field Office  
Post Office Box 70 Austin, Texas 78767  
(800) 626-3142 · FAX (855) 270-2725 · www.nass.usda.gov/tx

**Issue: TX-CW2215**

**Weekly Summary for June 8- June 14**

**Released: June 15, 2015**

Areas of the Plains, the Cross Timbers, and the Upper Coast received upwards of four inches of rainfall, with a few areas within those districts exceeding 6 inches. The rest of the state received little to no precipitation. Hail storms were experienced in areas of the High Plains.

**Small Grains:** Wheat and oat harvest continued in areas that were not complete throughout the state. Producers were anxious to finish harvest as continuing storms damaged standing crops. Progress for wheat harvest is at 47 percent up 8 points from previous year and 1 point above normal.

**Row Crops:** Row crops across the state continued to progress as planting continued. In areas of the Trans-Pecos some cotton producers began replanting cotton, while in areas of the Blacklands and North East Texas sorghum and corn suffered damage due to flooding. Cotton and corn were rated good to fair, with cotton at 88 percent planted 6 points behind normal and corn at 98 percent planted 1 point behind normal.

**Fruit, Vegetable and Specialty Crops:** Fruit and vegetable harvest continued in North East Texas, however some damage due to excess moisture and disease problems was experienced.

**Livestock, Range and Pasture:** Range and pasture continued to develop, contributing to adequate pasture for livestock. In areas of the Edwards Plateau pond levels remained adequate, however excess flies and mosquitoes began causing concerns for to livestock producers.

Crop Progress				
Stage	Percent of Acreage			
	Current	Prev. Week	Prev. Year	5 Year Avg
<b>Corn</b>				
Planted	98	93	100	99
Emerged	94	88	100	98
Silked	42	36	44	51
<b>Cotton</b>				
Planted	88	75	92	94
Squaring	11	8	10	13
Setting Bolls	2	N/A	2	6
<b>Peanuts</b>				
Planted	94	87	92	95
<b>Rice</b>				
Planted	98	86	100	100
Emerged	94	83	100	96
Headed	1	N/A	1	5
<b>Sorghum</b>				
Planted	83	82	93	91
Headed	37	28	46	52
Coloring	14	9	19	26
<b>Soybeans</b>				
Planted	81	73	95	97
Emerged	74	61	93	96
Blooming	12	5	21	28
<b>Sunflowers</b>				
Planted	89	88	95	82
<b>Winter Wheat</b>				
Harvested	47	20	39	46
<b>Oats</b>				
Harvested	70	41	57	76

**Crop Condition**

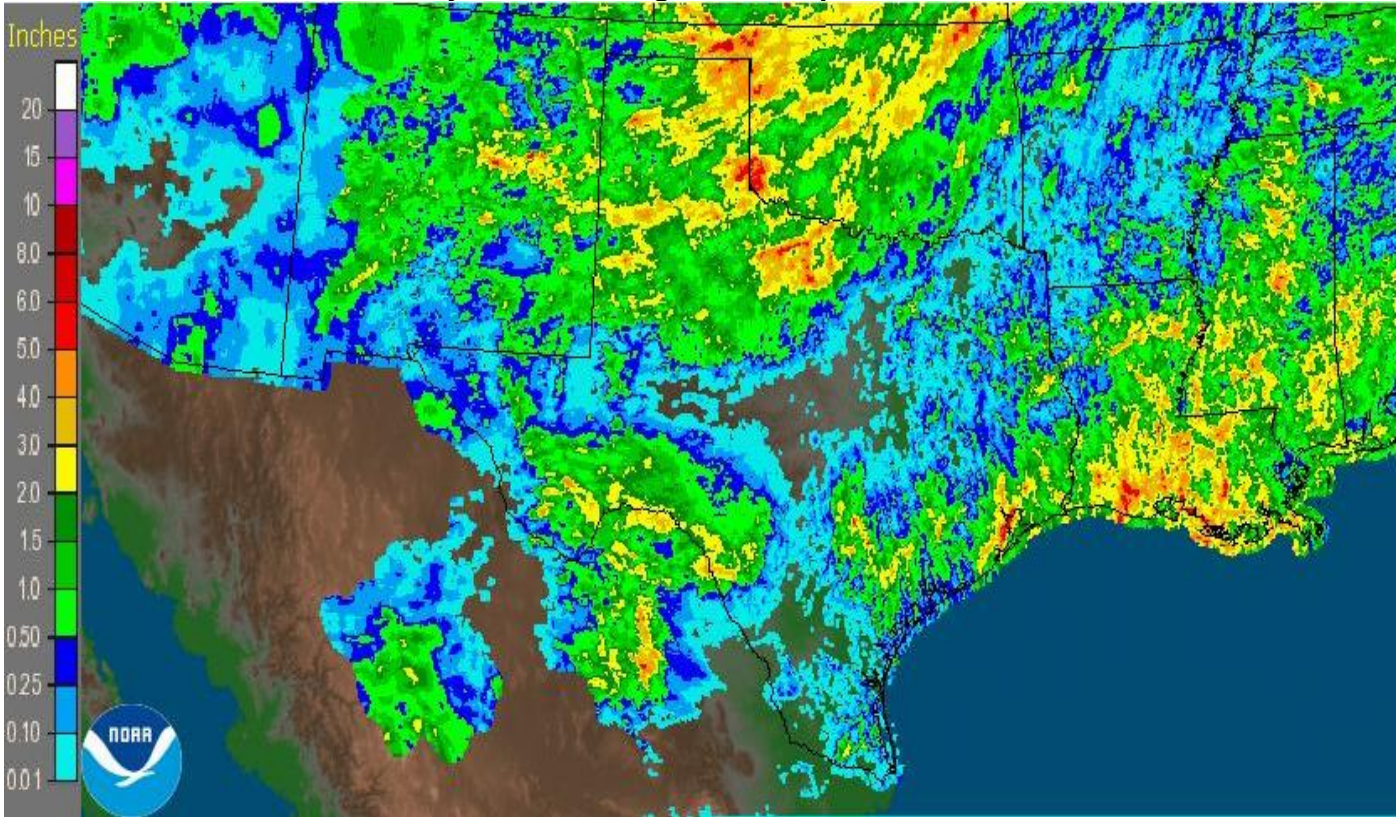
Crop	Percent of Acreage					Index <sup>1</sup>	
	Excellent	Good	Fair	Poor	Very Poor	2015	2014
Corn	21	47	25	5	2	82	79
Cotton	7	42	43	8	--	73	66
Peanuts	1	50	41	8	--	73	73
Rice	7	45	43	4	1	75	77
Sorghum	23	39	26	6	6	78	76
Soybeans	7	36	51	5	1	72	73
Wheat	11	37	32	14	6	68	36
Oats	5	32	30	18	15	58	59
Range and Pasture	26	50	20	3	1	--	--

<sup>1</sup> The formula for the condition index is  $I = (5V + 25P + 60F + 90G + 110E)/100$  where I = crop condition index and V, P, F, G, E = percentage of crop rated very poor, poor, fair, good, excellent.

**Top Soil Moisture Condition by District**

District	Topsoil Moisture Condition by District				Subsoil Moisture Condition by District				Days Suitable for Fieldwork
	Percentage of Acreage				Percentage of Acreage				
	Very Short	Short	Adequate	Surplus	Very Short	Short	Adequate	Surplus	
11	0	1	84	15	0	5	85	10	5.6
12	3	17	63	17	0	16	66	18	6.1
21	1	19	54	26	1	6	65	28	5.9
22	1	13	65	21	0	12	80	8	5.5
30	0	7	80	13	0	4	81	15	6.2
40	0	8	76	16	0	3	86	11	6.4
51	6	5	53	36	7	1	48	44	6.4
52	1	14	71	14	1	12	67	20	6.4
60	23	26	51	0	31	26	43	0	6.6
70	4	24	59	13	2	16	70	12	6.3
81	0	5	68	27	1	4	65	30	6.1
82	0	3	82	15	0	0	17	83	5.8
90	0	16	62	22	2	11	27	60	4.9
96	0	17	71	12	0	16	76	8	7.0
97	0	0	88	12	0	0	88	12	7.0
State	1	10	72	17	1	8	72	19	6.0

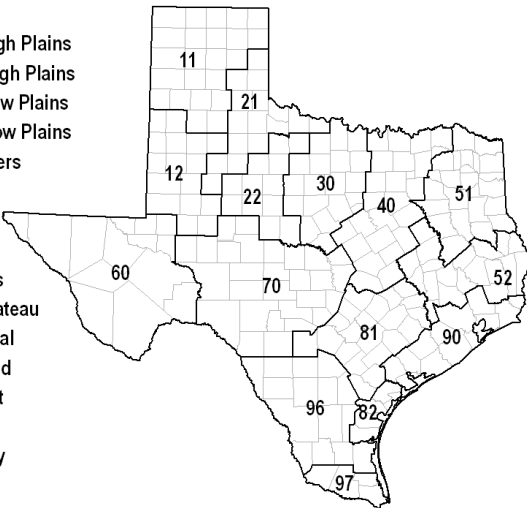
Seven Day Observed Regional Precipitation, June 14, 2015



Source: National Weather Service, [www.nws.noaa.gov](http://www.nws.noaa.gov)

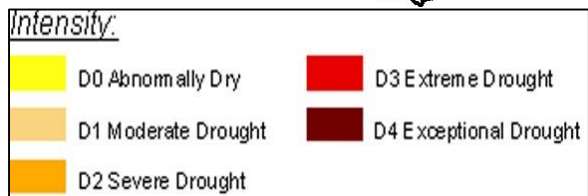
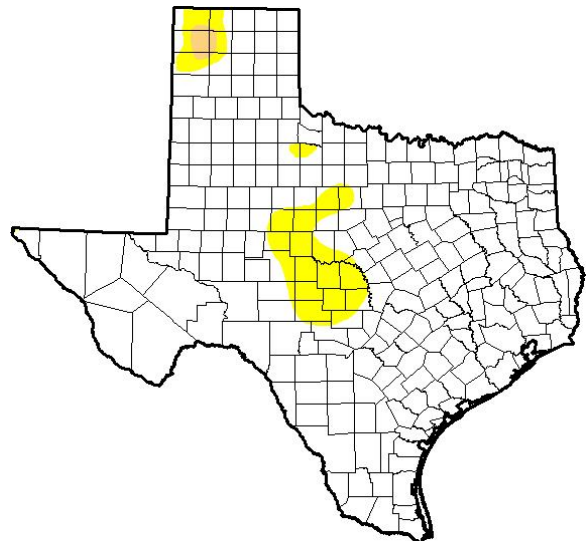
Texas Agricultural Districts

- 11 Northern High Plains
- 12 Southern High Plains
- 21 Northern Low Plains
- 22 Southern Low Plains
- 30 Cross Timbers
- 40 Blacklands
- 51 North East
- 52 South East
- 60 Trans-Pecos
- 70 Edwards Plateau
- 81 South Central
- 82 Coastal Bend
- 90 Upper Coast
- 96 South
- 97 Lower Valley



Drought Monitor

Valid June 9, 2015



Source: National Drought Mitigation Center, a partnership with USDA, U.S. Department of Commerce/NOAA, <http://droughtmonitor.unl.edu/>