



Texas Crop Progress and Condition

Southern Plains Regional Field Office
Post Office Box 70 Austin, Texas 78767
(800) 626-3142 · FAX (855) 270-2725 · www.nass.usda.gov/tx

Issue: TX-CW2915

Weekly Summary for July 27- August 02

Released: August 3, 2015

The majority of the state received measurable rainfall last week. The Northern High and Low Plains and the Cross Timbers received up to five inches in isolated areas, while the Trans-Pecos, Southern High Plains, and South Texas saw between one and three inches. Other areas within the state received little to no rainfall. Typical summer-time temperatures continued across the state

Small Grains: Field Preparations were underway for the 2016 wheat and oat crops.

Row Crops: Cotton continued to progress in the Southern High Plains, the Coastal Bend and the Upper Coast. Hot temperatures allowed heat unit accumulation which aided development in the Northern High Plains and the Edwards Plateau. Sorghum harvest progressed in areas of the Lower Valley and the Upper Coast. Sugarcane aphid populations continued to be a concern for sorghum producers in the Blacklands. Corn harvest progressed in South Central Texas and South East Texas, while preparations for corn harvest started in the Blacklands. Peanuts progressed well in the Plains and South Texas. Soybeans development continued in the Blacklands.

Fruit, Vegetable and Specialty Crops: Fruit trees in the Southern High Plains entered the node stage of development. Field preparations for fall vegetable plantings continued in North East Texas, while some producers wrapped up harvest. Pecans in the Trans Pecos progressed, while no major insect pressure was observed in South Texas.

Livestock, Range and Pasture: Range and pasture recovery had slowed in many areas due to hot weather and minimal rainfall. Hay baling was active across the state last week. Livestock remained in good condition throughout the state.

Crop Progress

Stage	Percent of Acreage			
	Current	Prev. Week	Prev. Year	5 Year Avg
Corn				
Silked	91	84	99	95
Dough	74	64	86	70
Dented	53	50	75	63
Mature	44	33	44	51
Cotton				
Squaring	89	79	92	94
Setting Bolls	44	29	53	55
Bolls Opening	8	7	9	11
Peanuts				
Pegging	60	52	73	86
Rice				
Headed	84	79	88	89
Sorghum				
Headed	86	85	90	82
Coloring	65	55	85	71
Mature	55	40	78	64
Harvested	29	20	38	41
Soybeans				
Planted	97	96	100	100
Emerged	90	86	100	100
Blooming	80	71	75	86
Setting Pods	58	44	63	66
Sunflowers				
Harvested	7	N/A	20	4
Winter Wheat				
Harvested	100	99	100	100
Oats				
Harvested	100	100	100	99

Crop Condition

Crop	Percent of Acreage					Index ¹	
	Excellent	Good	Fair	Poor	Very Poor	2015	2014
Corn	13	44	32	8	3	75	80
Cotton	8	41	38	12	1	72	64
Peanuts	7	51	41	1	0	78	75
Rice	10	43	41	2	4	75	77
Sorghum	14	53	22	5	6	78	74
Soybeans	5	42	44	8	1	72	74
Wheat	9	38	33	15	5	68	---
Oats	5	32	30	18	15	58	60
Range and Pasture	8	44	37	9	2	---	---

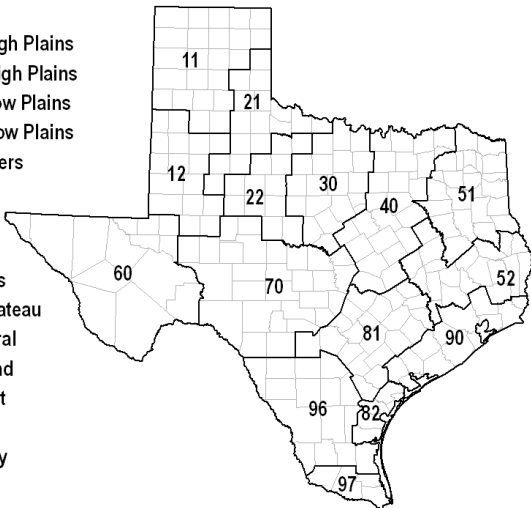
¹ The formula for the condition index is $I = (5V + 25P + 60F + 90G + 110E)/100$ where I = crop condition index and V, P, F, G, E = percentage of crop rated very poor, poor, fair, good, excellent.

Top Soil Moisture Condition by District

District	Topsoil Moisture Condition by District				Subsoil Moisture Condition by District				Days Suitable for Fieldwork
	Percentage of Acreage				Percentage of Acreage				
	Very Short	Short	Adequate	Surplus	Very Short	Short	Adequate	Surplus	
11	1	28	66	5	5	22	70	3	5.8
12	9	40	41	10	1	46	44	9	6.8
21	6	51	41	2	1	35	64	0	6.6
22	6	50	43	1	1	25	70	4	6.5
30	1	39	55	5	0	23	67	10	6.3
40	20	52	28	0	9	38	53	0	6.9
51	16	42	39	3	8	40	47	5	6.8
52	21	54	20	5	4	66	25	5	6.8
60	25	22	53	0	27	23	50	0	6.4
70	22	48	28	2	16	38	44	2	6.3
81	3	54	33	10	1	47	47	5	7.0
82	7	41	50	2	0	25	67	8	6.0
90	9	70	17	4	3	47	47	3	7.0
96	26	46	28	0	17	40	43	0	6.9
97	0	85	15	0	0	2	98	0	7.0
State	8	47	41	4	4	34	58	4	6.5

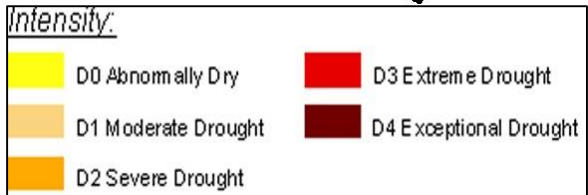
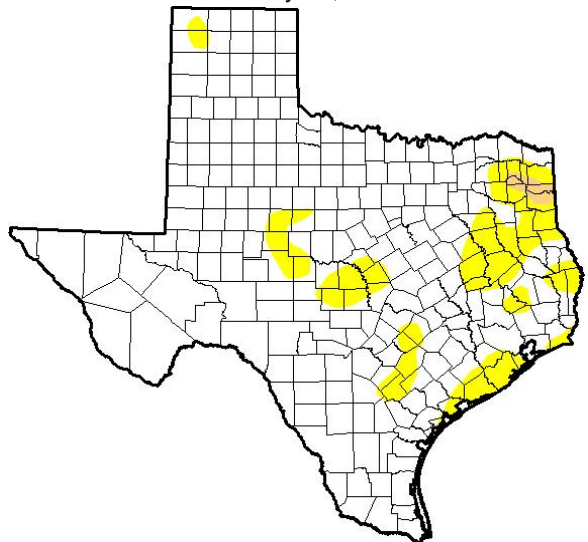
Texas Agricultural Districts

- 11 Northern High Plains
- 12 Southern High Plains
- 21 Northern Low Plains
- 22 Southern Low Plains
- 30 Cross Timbers
- 40 Blacklands
- 51 North East
- 52 South East
- 60 Trans-Pecos
- 70 Edwards Plateau
- 81 South Central
- 82 Coastal Bend
- 90 Upper Coast
- 96 South
- 97 Lower Valley



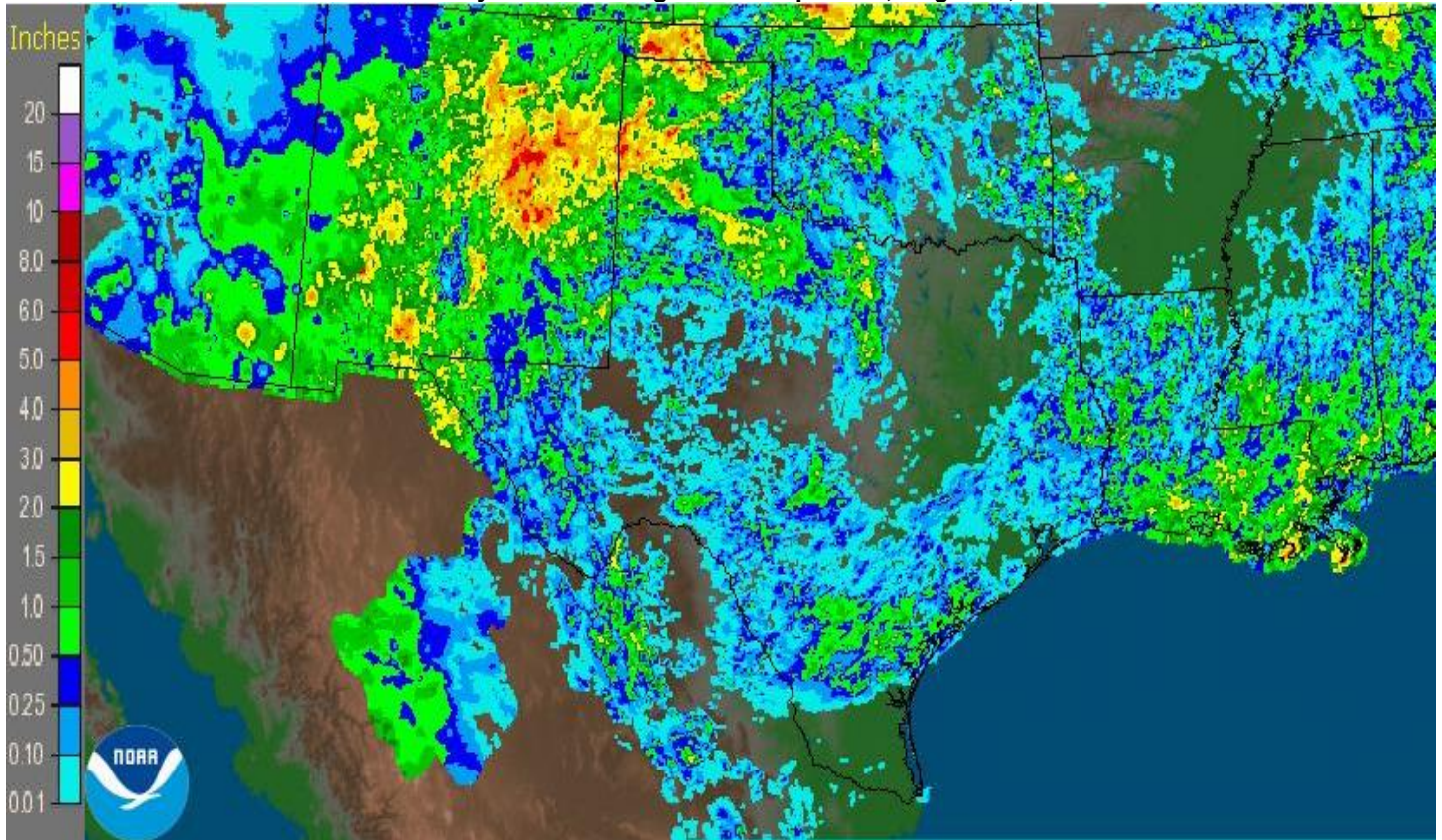
Drought Monitor

Valid July 28, 2015



Source: National Drought Mitigation Center, a partnership with USDA, U.S. Department of Commerce/NOAA, <http://droughtmonitor.unl.edu/>

Seven Day Observed Regional Precipitation, August 2, 2015



Source: National Weather Service, www.nws.noaa.gov