



Texas Crop Progress and Condition

Southern Plains Regional Field Office
Post Office Box 70 Austin, Texas 78767
(800) 626-3142 · FAX (855) 270-2725 · www.nass.usda.gov/tx

Issue: TX-CW3515

Weekly Summary for September 7-13

Released: September 14, 2015

The majority of the state experienced at least measurable rainfall last week, from trace amounts to upwards of 6 inches. Areas of the Upper Coast, the Coastal Bend, and South Texas experienced rainfall of 0.5 to upwards of 6 inches. Central Texas the Trans-Pecos plains received trace amounts.

Small Grains: Wheat seeding was underway in the Northern High Plains. Producers in areas of the Edwards Plateau, South and South East Texas began seeding oats, meanwhile seeding preparation continued in other areas of the state.

Row Crops: Cotton harvest progressed in southern parts of the state, although some delays were experienced in the Coastal Bend and Upper Coast due to heavy rains. Eight percent of the state's cotton had been harvested, 7 points behind last year and 4 points behind normal. Producers in the Northern High Plains began curtailing irrigation in anticipation of harvest. Corn and Soybean harvest continued in areas of the Blacklands, South Central and South Texas, bringing corn harvest to 53 percent, 6 points behind last year and 5 points behind normal.

Crop Progress				
Stage	Percent of Acreage			
	Current	Prev. Week	Prev. Year	5 Year Avg
Corn				
Dough	95	92	98	96
Dented	86	75	92	90
Mature	70	57	74	75
Harvested	53	52	59	58
Cotton				
Setting Bolls	96	92	99	98
Bolls Opening	35	21	43	43
Harvested	8	6	15	12
Peanuts				
Harvested	2	N/A	N/A	1
Rice				
Harvested	93	76	89	95
Sorghum				
Headed	98	97	99	98
Coloring	84	77	93	84
Mature	70	65	87	73
Harvested	60	52	66	60
Soybeans				
Setting Pods	100	99	98	95
Dropping Leaves	65	51	57	74
Harvested	32	24	34	50
Sunflowers				
Harvested	46	39	75	46
Winter Wheat				
Planted	5	1	7	9

Fruit, Vegetable and Specialty Crops: Fall vegetable planting preparations continued in areas of the Lower Valley. Pecans continued to make progress where irrigation was possible.

Livestock, Range and Pasture: As dry weather conditions persisted, livestock producers in areas of South Texas increased supplemental feeding. Pasture conditions continued to decline due to high temperatures and little moisture. Wildfire concerns increased in areas of the Southern High Plains due to heavy fuel loads of dry grass and a lack of moisture.

Crop Condition

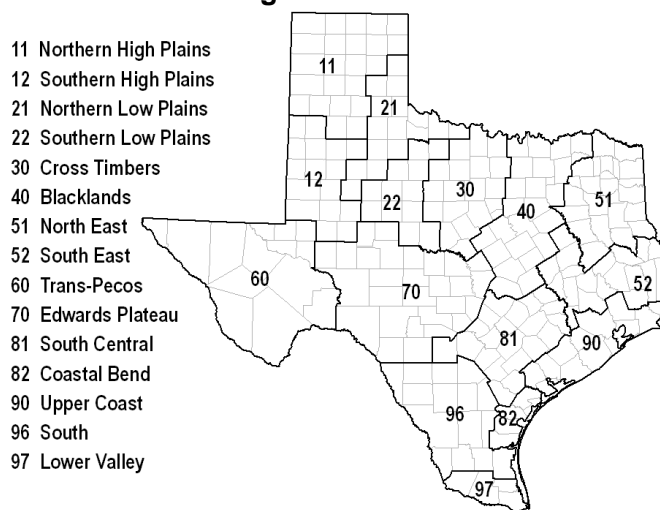
Crop	Percent of Acreage					Index ¹	
	Excellent	Good	Fair	Poor	Very Poor	2015	2014
Corn	15	41	33	8	3	75	81
Cotton	5	37	40	15	3	67	61
Peanuts	7	50	42	1	0	78	75
Rice	8	43	41	6	2	74	78
Sorghum	16	51	24	6	3	80	76
Soybeans	5	34	39	20	2	65	75
Range and Pasture	5	24	41	23	7	---	---

¹ The formula for the condition index is $I = (5V + 25P + 60F + 90G + 110E)/100$ where I = crop condition index and V, P, F, G, E = percentage of crop rated very poor, poor, fair, good, excellent.

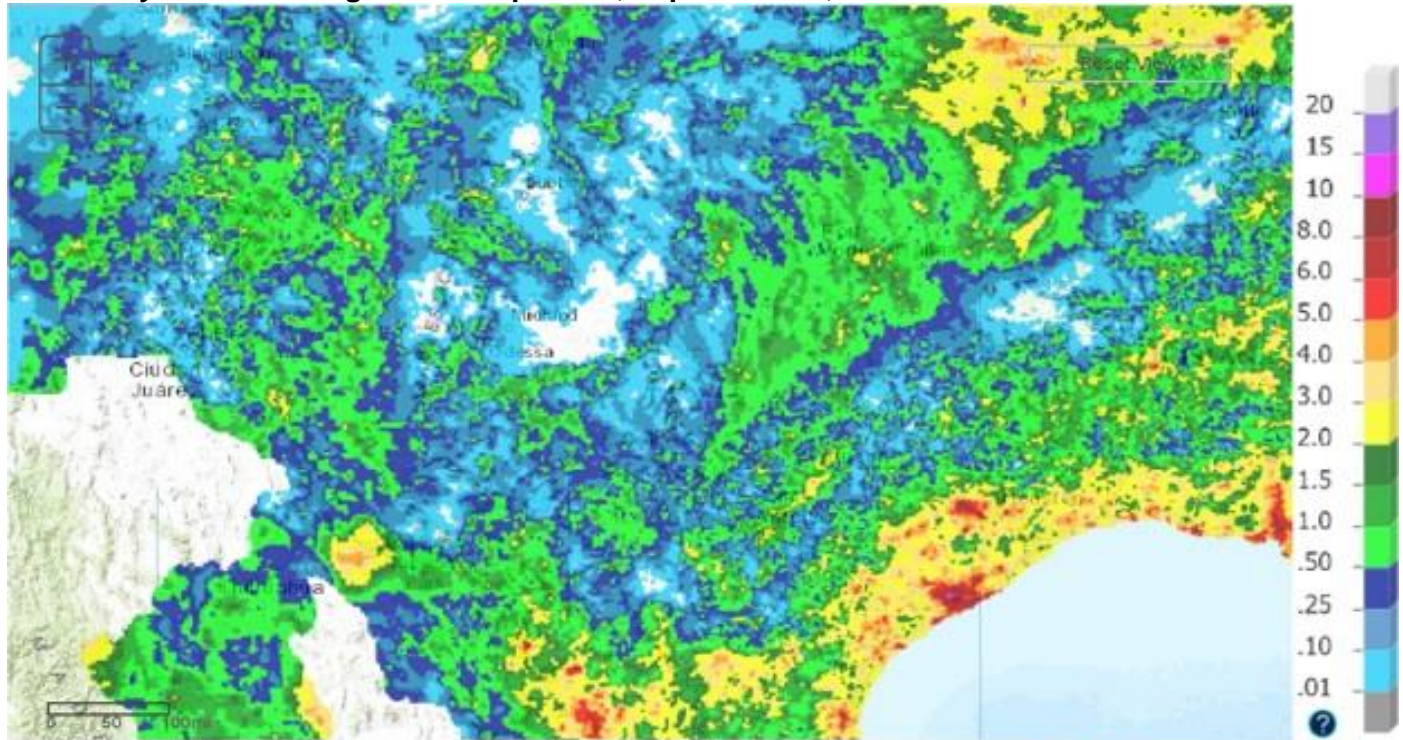
Top Soil Moisture Condition by District

District	Topsoil Moisture Condition by District				Subsoil Moisture Condition by District				Days Suitable for Fieldwork
	Percentage of Acreage				Percentage of Acreage				
	Very Short	Short	Adequate	Surplus	Very Short	Short	Adequate	Surplus	
11	4	51	44	1	8	34	56	2	6.8
12	14	64	22	0	9	61	30	0	6.7
21	33	53	13	1	8	56	36	0	6.8
22	34	62	4	0	19	57	24	0	6.7
30	12	56	32	0	4	59	37	0	5.4
40	26	52	22	0	17	60	23	0	6.2
51	16	43	35	6	15	42	39	4	6.1
52	19	52	24	5	35	39	21	5	6.0
60	29	45	26	0	31	45	24	0	6.7
70	60	33	7	0	35	54	11	0	6.1
81	19	41	25	15	9	56	30	5	5.8
82	2	28	41	29	3	29	43	25	4.8
90	0	10	67	23	2	39	50	9	2.6
96	43	37	19	1	30	46	24	0	6.6
97	0	36	38	26	0	2	75	23	6.8
State	18	49	29	4	12	48	37	3	6.2

Texas Agricultural Districts



Seven Day Observed Regional Precipitation, September 13, 2015



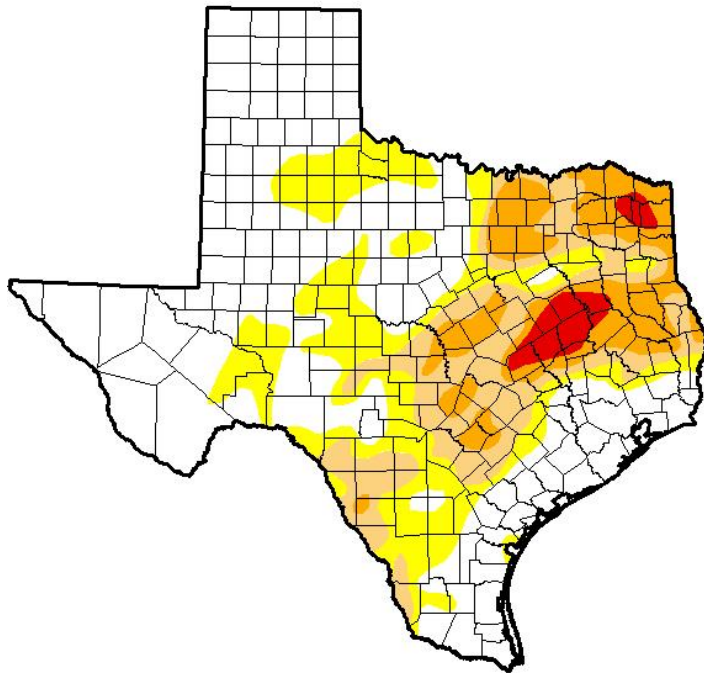
Texas: 7-Day Observed Precipitation
Valid on: September 13, 2015 12:00 UTC



Source: National Weather Service, www.nws.noaa.gov

Drought Monitor

Valid September 8, 2015



Drought Conditions (Percent Area)

	None	D0-D4	D1-D4	D2-D4	D3-D4	D4
Current	52.57	47.43	27.14	13.23	2.50	0.00
Last Week 9/1/2015	58.06	41.94	24.76	9.99	1.32	0.00
3 Months Ago 6/9/2015	92.07	7.93	0.53	0.00	0.00	0.00
Start of Calendar Year 12/31/2014	34.37	65.63	44.68	25.73	11.70	3.17
Start of Water Year 9/30/2014	28.92	71.08	48.95	29.54	11.26	2.69
One Year Ago 9/9/2014	13.77	86.23	57.62	36.26	13.87	1.54

Intensity

- D0 Abnormally Dry
- D1 Moderate Drought
- D2 Severe Drought
- D3 Extreme Drought
- D4 Exceptional Drought

The Drought Monitor focuses on broad-scale conditions. Local conditions may vary. See accompanying text summary for forecast statements.

Author:

Richard Tinker
CPC/NOAA/NWS/NCEP



Source: National Drought Mitigation Center, a partnership with USDA, U.S. Department of Commerce/NOAA, <http://droughtmonitor.unl.edu/>.