



Texas Crop Progress and Condition

Southern Plains Regional Field Office
Post Office Box 70 Austin, Texas 78767
(800) 626-3142 · FAX (855) 270-2725 · www.nass.usda.gov/tx

Issue: TX-CW3815

Weekly Summary for September 28-Oct 4

Released: October 5, 2015

Isolated showers were experienced primarily in areas of the High Plains, the Trans-Pecos, and South East Texas, with precipitation levels ranging from trace amounts to upwards of 2 inches. Central Texas experienced little to no measurable rainfall.

Small Grains: Wheat seeding continued, with areas of the Edwards Plateau, South Central, and South Texas experiencing delays as producers waited for soil moisture conditions to improve. Oat seeding continued in areas of the Blacklands and the Edwards Plateau.

Row Crops: Cotton harvest continued to progress across much of the state, with cotton fields in the Northern and Southern High Plains nearing harvest stage. Cotton harvest is currently at 21 percent, 2 points above previous year, and 4 points above normal. Corn and sorghum harvest remained active across areas of the Plains, and the Cross Timbers. Corn harvest is currently at 64 percent, 5 points behind previous year and 8 points behind normal. Peanut harvest was active in areas of the Southern High Plains, while in South Texas irrigation continued.

Fruit, Vegetable and Specialty Crops: Fall vegetable planting was active in areas of the Lower Valley. Onions and cabbage progressed in South Texas. Pecan harvest was just getting underway in the Trans-Pecos and Edwards Plateau.

Livestock, Range and Pasture: Livestock continued to progress, as supplemental feeding continued across the state. Range and pasture conditions declined due to lack of moisture in much of the state. Army worm infestations continued to be a concern in areas of the Blacklands.

Crop Progress

Stage	Percent of Acreage			
	Current	Prev. Week	Prev. Year	5 Year Avg
Corn				
Dented	98	90	100	99
Mature	84	76	79	90
Harvested	64	63	69	72
Cotton				
Setting Bolls	100	98	100	100
Bolls Opening	70	60	59	71
Harvested	21	16	19	17
Peanuts				
Harvested	27	17	5	16
Rice				
Harvested	99	98	100	100
Sorghum				
Coloring	98	95	96	94
Mature	85	76	90	81
Harvested	67	63	72	68
Soybeans				
Dropping Leaves	70	67	83	90
Harvested	49	46	48	70
Sunflowers				
Harvested	60	59	83	64
Winter Wheat				
Planted	37	24	52	47
Emerged	8	2	28	20
Oats				
Planted	19	6	37	37
Emerged	2	N/A	4	6

Crop Condition

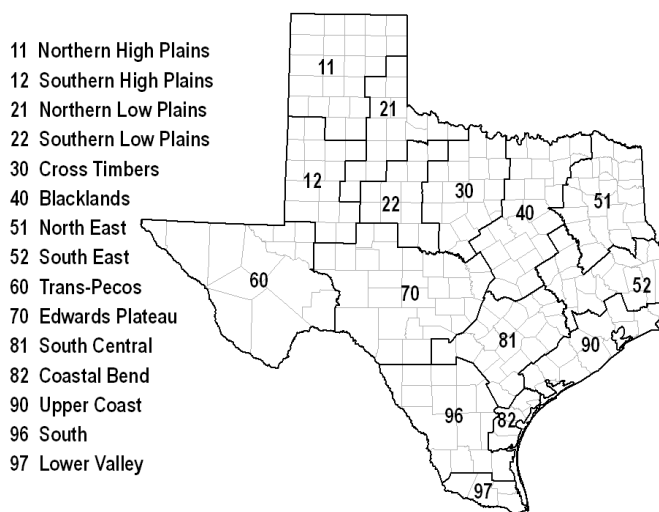
Crop	Percent of Acreage					Index ¹	
	Excellent	Good	Fair	Poor	Very Poor	2015	2014
Corn	15	41	33	8	3	75	81
Cotton	4	34	43	16	3	65	58
Peanuts	7	58	34	1		81	70
Rice	8	43	41	6	2	74	78
Sorghum	16	51	24	6	3	80	76
Soybeans	5	33	39	20	3	64	75
Range and Pasture	4	22	37	26	11	--	--

¹ The formula for the condition index is $I = (5V + 25P + 60F + 90G + 110E)/100$ where I = crop condition index and V, P, F, G, E = percentage of crop rated very poor, poor, fair, good, excellent.

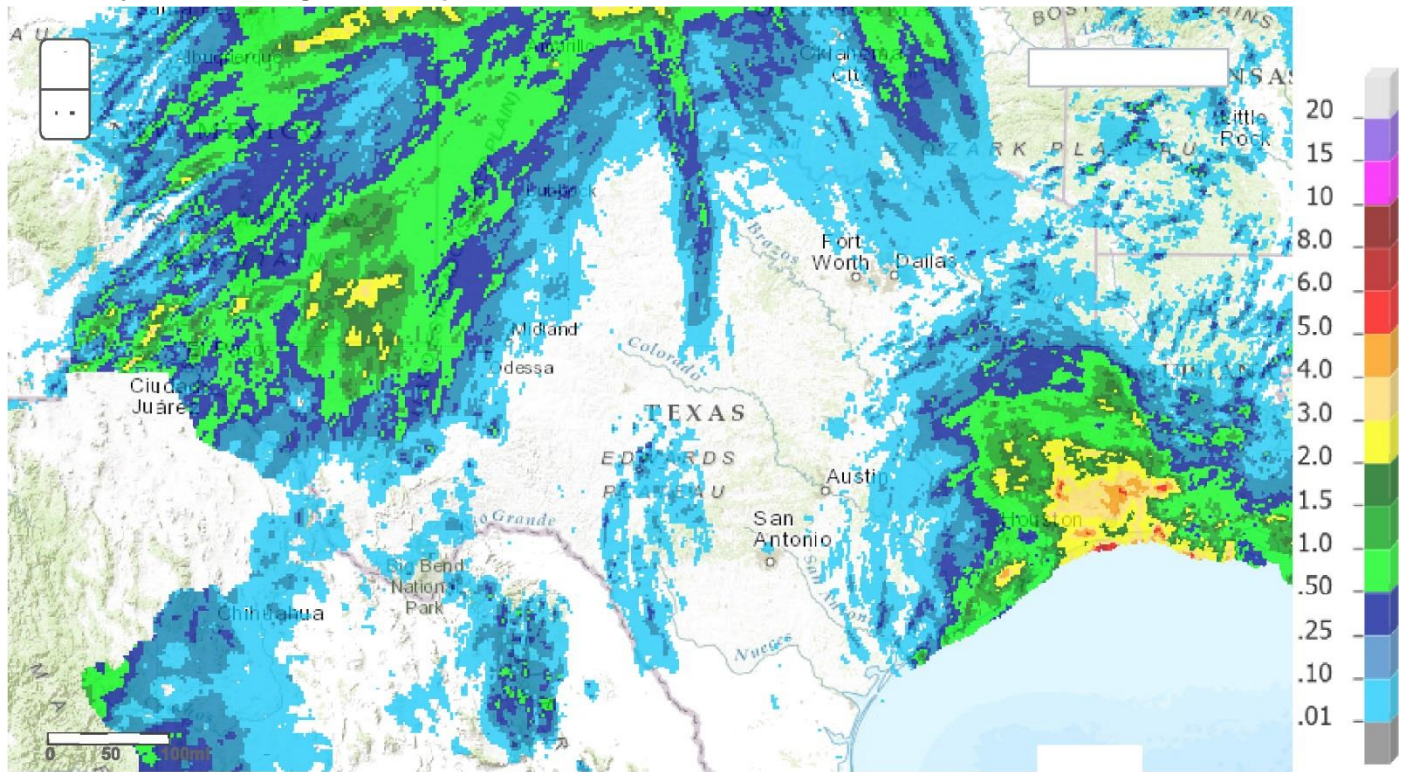
Top Soil Moisture Condition by District

District	Topsoil Moisture Condition by District				Subsoil Moisture Condition by District				Days Suitable for Fieldwork
	Percentage of Acreage				Percentage of Acreage				
	Very Short	Short	Adequate	Surplus	Very Short	Short	Adequate	Surplus	
11	3	45	52	0	7	41	50	2	5.7
12	13	49	38	0	5	61	34	0	6.2
21	39	36	23	2	20	49	31	0	6.8
22	51	47	2	0	31	51	18	0	6.8
30	24	51	25	0	8	65	27	0	6.3
40	36	56	8	0	19	63	18	0	6.8
51	34	40	24	2	29	38	29	4	6.6
52	38	37	20	5	37	38	20	5	6.8
60	25	28	47	0	29	29	42	0	6.7
70	69	26	5	0	46	46	8	0	6.6
81	28	41	17	14	13	61	22	4	6.8
82	4	54	38	4	1	41	55	3	7.0
90	4	13	76	7	4	41	48	7	6.5
96	44	36	18	2	42	31	27	0	7.0
97	0	42	42	16	0	2	82	16	7.0
State	23	44	31	2	15	49	34	2	6.4

Texas Agricultural Districts



Seven Day Observed Regional Precipitation, October 4, 2015



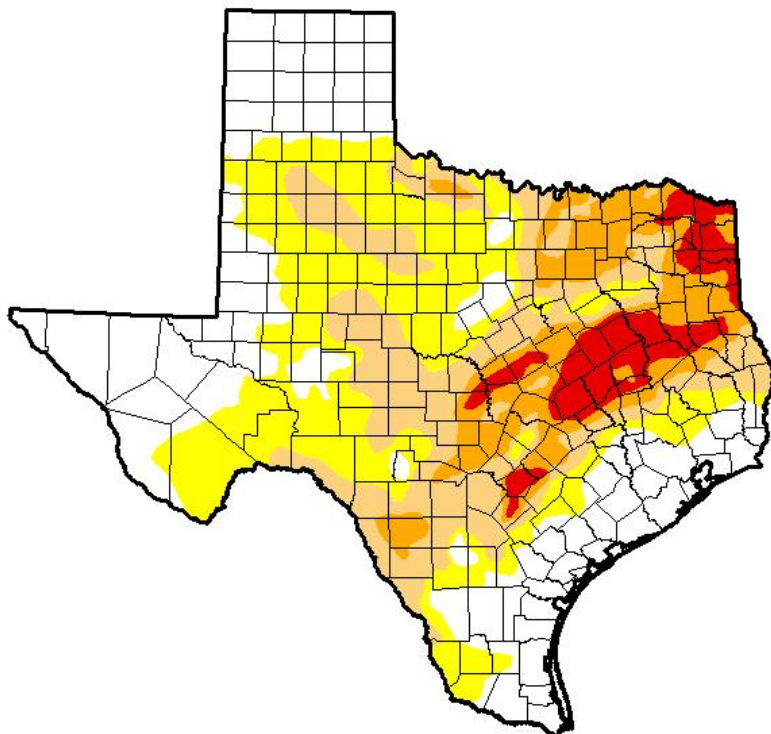
Texas: 7-Day Observed Precipitation
Valid on: October 04, 2015 12:00 UTC



Source: National Weather Service, www.nws.noaa.gov

Drought Monitor

Valid September 29, 2015



Drought Conditions (Percent Area)

	None	D0-D4	D1-D4	D2-D4	D3-D4	D4
Current	34.51	65.49	38.32	17.55	6.27	0.00
Last Week 9/22/2015	40.27	59.73	30.40	14.04	4.72	0.00
3 Months Ago 6/30/2015	95.37	4.63	0.25	0.00	0.00	0.00
Start of Calendar Year 12/31/2014	34.37	65.63	44.68	25.73	11.70	3.17
Start of Water Year 9/30/2014	28.92	71.08	48.95	29.54	11.26	2.69
One Year Ago 9/30/2014	28.92	71.08	48.95	29.54	11.26	2.69

Intensity:

- D0 Abnormally Dry
- D1 Moderate Drought
- D2 Severe Drought
- D3 Extreme Drought
- D4 Exceptional Drought

The Drought Monitor focuses on broad-scale conditions. Local conditions may vary.

Author:

Eric Luebbehusen
U.S. Department of Agriculture



Source: National Drought Mitigation Center, a partnership with USDA, U.S. Department of Commerce/NOAA, <http://droughtmonitor.unl.edu>

Texas Crop Progress and Condition (October 2015)

USDA, National Agricultural Statistics Service, Southern Plains Regional Field Office