



Texas Crop Progress and Condition

Southern Plains Regional Field Office
Post Office Box 70 Austin, Texas 78767
(800) 626-3142 · FAX (855) 270-2725 · www.nass.usda.gov/tx

Issue: TX-CW4315

Weekly Summary for November 2-Nov 8

Released: November 9, 2015

Rainfall was received in many areas of the state again last week. The heaviest precipitation was mostly in eastern half of the state, while much of the western half of the state received trace amounts at best. A few areas of East Texas received rainfall upwards of 5.0 inches but in general totals were 2.0 inches or less. Isolated areas in the Cross Timbers experienced hail storms

Small Grains: Winter wheat and oat development progressed as seeding continued. In areas of the Blacklands heavy rainfall drowned out some wheat fields.

Row Crops: Cotton harvest continued to make good progress in areas of the Plains, the Trans-Pecos, and where conditions allowed in areas of the Cross Timbers, and the Edwards Plateau. Cotton is currently at 53 percent, 13 points above previous year, and 3 points behind normal. Corn and sorghum harvest made progress in the areas of the High Plains. Corn harvest is currently at 87 percent, 2 points behind previous year and 9 points behind normal.

Fruit, Vegetable and Specialty Crops: Fall vegetables continued to progress in areas of the Trans-Pecos and the Lower Valley. Pecans harvest was active in areas of the Edwards Plateau and South Central Texas where conditions allowed.

Livestock, Range and Pasture: Livestock remained in good condition throughout the state. Range and pasture conditions showed improvement with increased moisture in many areas of the state. In areas of North East Texas feral hogs and flash flooding damaged crops and pasture.

Crop Progress

Stage	Percent of Acreage			
	Current	Prev. Week	Prev. Year	5 Year Avg
Corn				
Harvested	87	84	89	96
Cotton				
Bolls Opening	99	96	92	96
Harvested	53	40	40	56
Peanuts				
Harvested	65	57	77	84
Sorghum				
Mature	96	95	95	96
Harvested	86	83	81	84
Soybeans				
Harvested	85	84	63	88
Sunflowers				
Harvested	86	85	89	84
Winter Wheat				
Planted	76	71	88	87
Emerged	59	55	73	68
Oats				
Planted	83	77	90	88
Emerged	52	31	43	63

Crop Condition

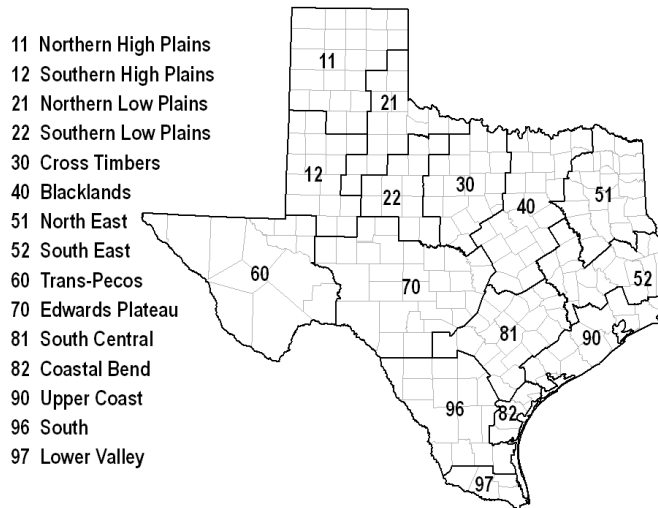
Crop	Percent of Acreage					Index ¹	
	Excellent	Good	Fair	Poor	Very Poor	2015	2014
Corn	15	41	33	8	3	75	81
Cotton	4	36	45	11	4	67	61
Peanuts	7	58	34	1	0	81	71
Sorghum	16	51	24	6	3	80	76
Soybeans	5	28	42	22	3	62	75
Wheat	19	28	41	9	3	73	72
Range and Pasture	4	23	40	22	11	--	--

¹ The formula for the condition index is $I = (5V + 25P + 60F + 90G + 110E)/100$ where I = crop condition index and V, P, F, G, E = percentage of crop rated very poor, poor, fair, good, excellent.

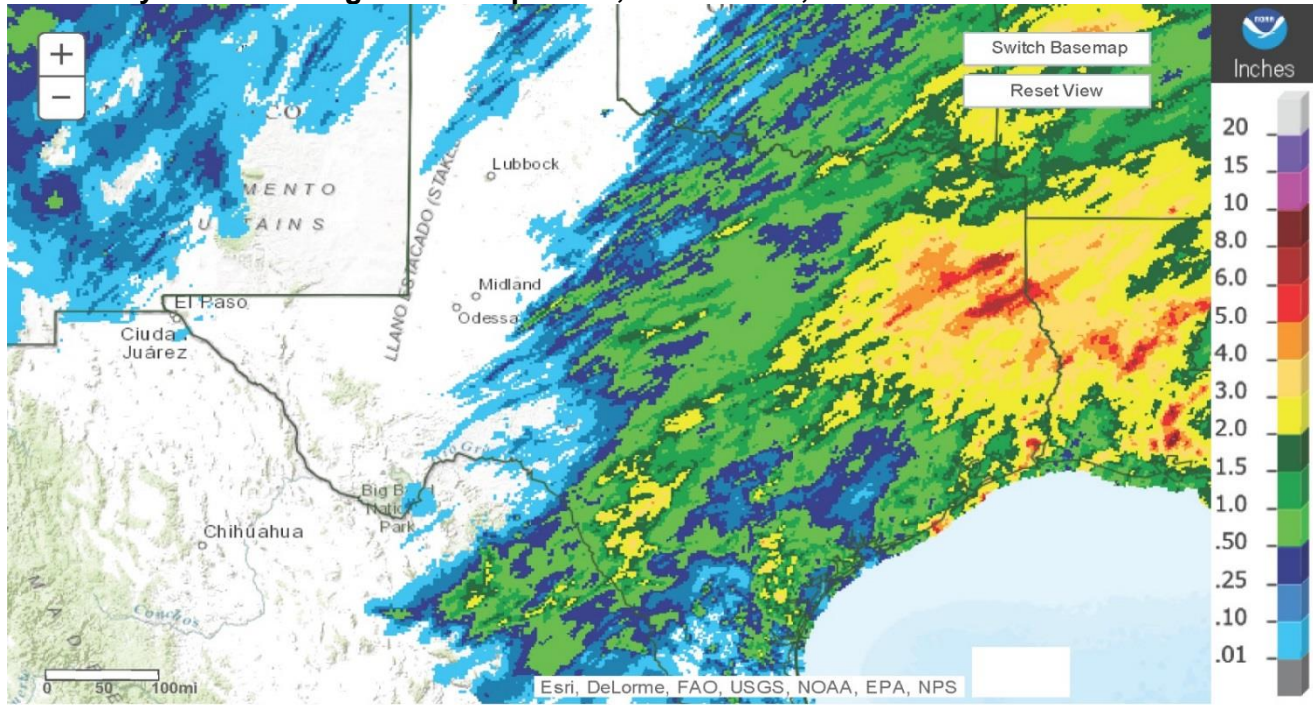
Top Soil Moisture Condition by District

District	Topsoil Moisture Condition by District				Subsoil Moisture Condition by District				Days Suitable for Fieldwork
	Percentage of Acreage				Percentage of Acreage				
	Very Short	Short	Adequate	Surplus	Very Short	Short	Adequate	Surplus	
11	0	3	81	16	0	15	85	0	5.7
12	3	19	65	13	1	25	64	10	6.6
21	3	23	70	4	10	28	61	1	5.2
22	0	19	76	5	4	17	75	4	3.8
30	3	15	63	19	6	19	67	8	4.7
40	0	1	56	43	0	8	54	38	1.5
51	9	5	44	42	9	6	53	32	4.6
52	19	9	53	19	19	14	53	14	4.0
60	22	19	57	2	21	14	63	2	6.6
70	3	13	74	10	6	32	57	5	5.0
81	0	3	67	30	1	19	59	21	4.4
82	3	6	50	41	2	6	64	28	5.0
90	1	0	67	32	0	32	46	22	3.5
96	5	5	76	14	5	5	89	1	5.5
97	0	19	52	29	0	2	72	26	7.0
State	2	10	67	21	3	17	67	13	4.9

Texas Agricultural Districts



Seven Day Observed Regional Precipitation, November 8, 2015



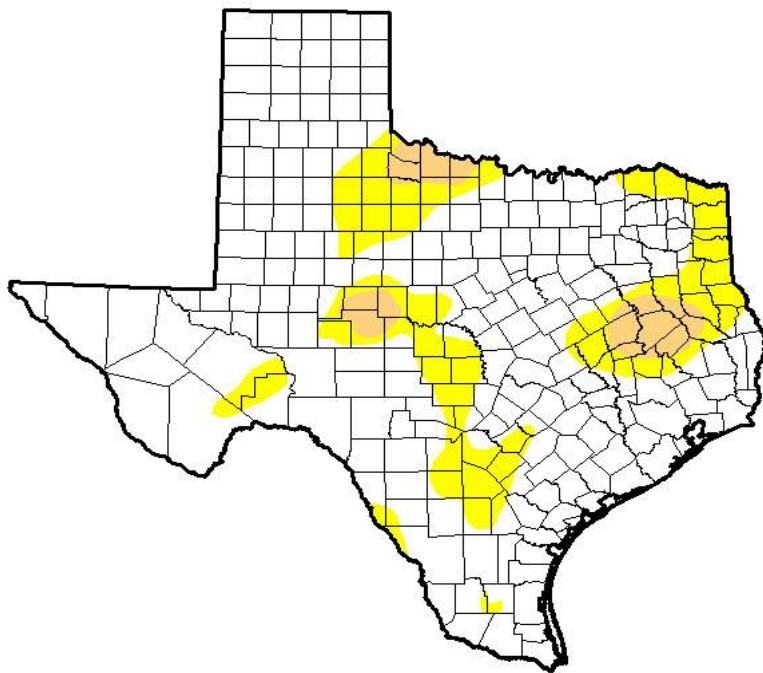
Texas: Last 7-Day Observed Precipitation
Valid on: November 08, 2015 12:00 UTC



Source: National Weather Service, www.nws.noaa.gov

Drought Monitor

Valid November 3, 2015



Drought Conditions (Percent Area)

	None	D0-D4	D1-D4	D2-D4	D3-D4	D4
Current	78.47	21.53	4.27	0.00	0.00	0.00
Last Week <i>10/27/2015</i>	56.34	43.66	15.67	2.85	0.00	0.00
3 Months Ago <i>8/4/2015</i>	72.33	27.67	4.61	0.18	0.00	0.00
Start of Calendar Year <i>12/02/2014</i>	34.37	65.63	44.68	25.73	11.70	3.17
Start of Water Year <i>9/29/2015</i>	34.51	65.49	38.32	17.55	6.27	0.00
One Year Ago <i>11/4/2014</i>	26.33	73.67	48.48	28.39	10.81	3.62

Intensity:

- D0 Abnormally Dry
- D1 Moderate Drought
- D2 Severe Drought
- D3 Extreme Drought
- D4 Exceptional Drought

The Drought Monitor focuses on broad-scale conditions. Local conditions may vary.

Author:

David Miskus
NOAA/NWS/NCEP/CPC



Source: National Drought Mitigation Center, a partnership with USDA, U.S. Department of Commerce/NOAA, <http://droughtmonitor.unl.edu>