



Texas Crop Progress and Condition

Southern Plains Regional Field Office
Post Office Box 70 Austin, Texas 78767
(800) 626-3142 · FAX (855) 270-2725 · www.nass.usda.gov/tx

Issue: TX-CW0116

Weekly Summary for January 11 - 17

Released: January 19, 2016

Few scattered showers were experienced across the western part of the state. Areas in the Upper Coast received upwards of 0.5 of an inch, while the rest of the state experienced from no measurable precipitation to upwards 0.25 of an inch.

Small Grains: Winter Wheat is

progressing throughout the state. In areas of the High Plains wheat was primarily at a dormant stage, while in areas of the Blacklands wheat and oats experienced damage due to wet field conditions. Wheat and oats in areas of the Upper Coast, the Edwards Plateau, and South Texas have been experiencing good progress.

Row Crops: Cotton harvest was at 95 percent complete, 3 points behind normal. Corn producers in the Blacklands have begun field preparations by applying fertilizer to fields.

Fruit, Vegetable and Specialty Crops: Vegetable harvest was active in areas of the Lower Valley. While onion producers began field preparations in areas of North East Texas.

Livestock, Range and Pasture: Livestock are being maintained primarily with supplemental feed and were reported in good condition. Winter grazing outlook was good as temperatures begin to warm and wheat pasture continues to develop and improve. Tick fever has caused problems for livestock in South Texas, while feral hogs activity is occurring in areas of the Blacklands and North East Texas.

Stage	Crop Progress			
	Percent of Acreage			
	Current	Prev. Week	Prev. Year	5 Year Avg
Cotton				
Harvested	95	--	96	98
Pecans				
Harvested	83	--	86	92
Winter Wheat				
Emerged	94	--	95	94
Oats				
Emerged	95	--	94	95

Crop Condition

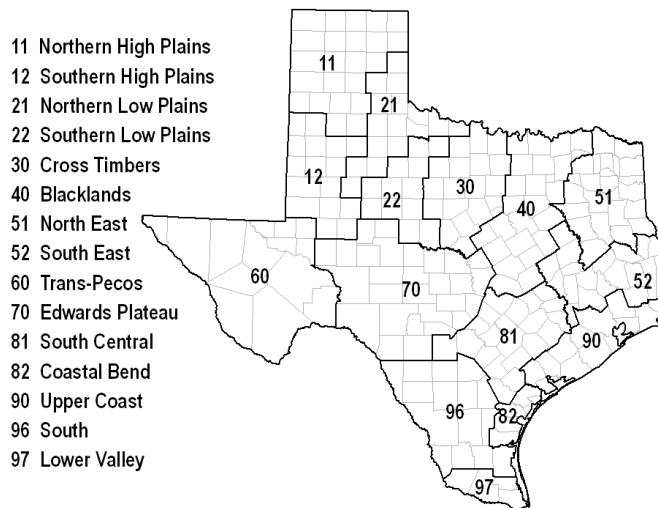
Crop	Percent of Acreage					Index ¹	
	Excellent	Good	Fair	Poor	Very Poor	2016	2015
Wheat	17	38	32	11	2	75	68
Oats	5	39	28	24	4	64	71
Range and Pasture	6	36	37	16	5	--	--

¹ The formula for the condition index is $I = (5V + 25P + 60F + 90G + 110E)/100$ where I = crop condition index and V, P, F, G, E = percentage of crop rated very poor, poor, fair, good, excellent.

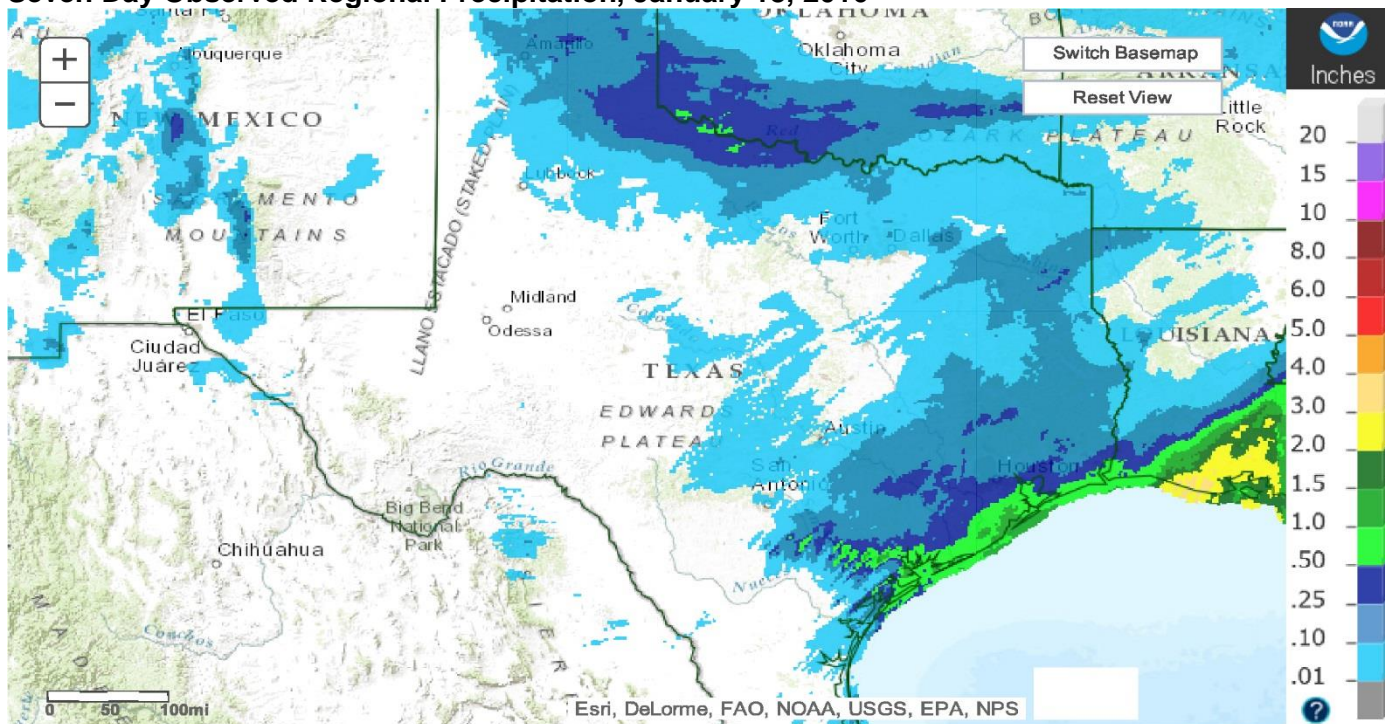
Top Soil Moisture Condition by District

District	Topsoil Moisture Condition by District				Subsoil Moisture Condition by District				Days Suitable for Fieldwork
	Percentage of Acreage				Percentage of Acreage				
	Very Short	Short	Adequate	Surplus	Very Short	Short	Adequate	Surplus	
11	0	7	84	9	1	5	68	26	4.4
12	5	10	82	3	4	4	88	4	5.7
21	10	11	71	8	2	15	77	6	4.4
22	0	3	70	27	0	5	65	30	4.8
30	4	6	64	26	4	7	61	28	5.9
40	0	1	56	43	0	1	65	34	2.6
51	6	0	46	48	6	0	45	49	5.7
52	0	6	56	38	0	6	53	41	3.7
60	13	24	60	3	11	34	53	2	6.5
70	3	17	71	9	3	17	68	12	6.8
81	0	4	93	3	0	2	89	9	5.0
82	0	4	57	39	0	0	54	46	2.0
90	0	2	61	37	0	1	49	50	2.8
96	1	2	96	1	0	16	80	4	7.0
97	0	41	59	0	0	57	43	0	7.0
State	2	8	72	18	2	7	69	22	4.7

Texas Agricultural Districts



Seven Day Observed Regional Precipitation, January 18, 2016



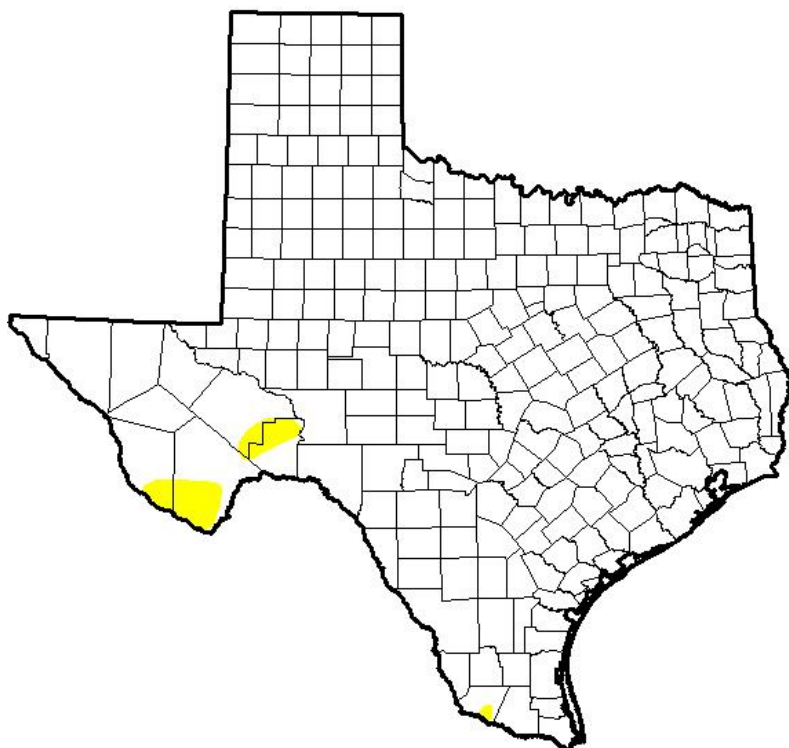
Texas: Last 7-Day Observed Precipitation
 Valid on: January 18, 2016 12:00 UTC
 What is UTC time? Map Help



Source: National Weather Service, www.nws.noaa.gov

Drought Monitor

Valid January 12, 2016



Drought Conditions (Percent Area)

	None	D0-D4	D1-D4	D2-D4	D3-D4	D4
Current	98.31	1.69	0.00	0.00	0.00	0.00
Last Week <i>1/5/2016</i>	98.31	1.69	0.00	0.00	0.00	0.00
3 Months Ago <i>10/13/2015</i>	36.47	63.53	47.03	31.88	13.89	1.42
Start of Calendar Year <i>12/29/2015</i>	95.48	4.52	0.00	0.00	0.00	0.00
Start of Water Year <i>9/29/2015</i>	34.51	65.49	38.32	17.55	6.27	0.00
One Year Ago <i>1/3/2015</i>	39.80	60.20	40.34	23.49	11.03	2.90

Intensity:

- D0 Abnormally Dry
- D1 Moderate Drought
- D2 Severe Drought
- D3 Extreme Drought
- D4 Exceptional Drought

The Drought Monitor focuses on broad-scale conditions. Local conditions may vary. See accompanying text summary for forecast statements.

Author:

Brian Fuchs
 National Drought Mitigation Center



Source: National Drought Mitigation Center, a partnership with USDA, U.S. Department of Commerce/NOAA, <http://droughtmonitor.unl.edu>

Texas Crop Progress and Condition (January 2016)

USDA, National Agricultural Statistics Service, Southern Plains Regional Field Office