



Texas Crop Progress and Condition

Southern Plains Regional Field Office, Post Office Box 70 Austin, Texas 78767
(800) 626-3142 · FAX (855) 270-2725 · www.nass.usda.gov/tx

Issue: TX-CW0316

Weekly Summary for January 25-31

Released: February 1, 2016

Scattered, mostly light showers were experienced across the state last week. Areas of the Upper Coast and South East Texas received rainfall upwards of 1.0 inch, with isolated areas reaching upwards of 2.0 inches. Areas of the Trans-Pecos, the Edwards Plateau, and South Central Texas received upwards of 0.25 of an inch of precipitation. The rest of the state experienced little to no measurable rainfall.

Stage	Crop Progress			
	Percent of Acreage			
	Current	Prev. Week	Prev. Year	5 Year Avg
Cotton				
Harvested	97	96	99	100
Pecans				
Harvested	86	85	92	97
Winter Wheat				
Emerged	97	95	97	96
Oats				
Emerged	99	98	96	97

Small Grains: Winter Wheat and oats continued to progress, with some producers in areas of South Texas beginning to irrigate wheat and oat fields due to dry conditions. However, overall conditions were rated mostly good to fair.

Row Crops: Statewide cotton harvest was 97 percent complete, 3 points behind normal. Some producers in areas of the Blacklands began applying fertilizer in preparation for corn seeding.

Fruit, Vegetable and Specialty Crops: In areas of North East Texas land preparation for vegetable seeding was active. In South Texas dry conditions prompted producers to begin irrigating vegetables.

Livestock, Range and Pasture: Pastures continued to progress, as livestock producers across the state continued supplemental feeding. Feral hogs was active in areas of the Blacklands and North East Texas. Dry conditions and low humidity levels caused wildfire concerns in areas of the Southern Low Plains.

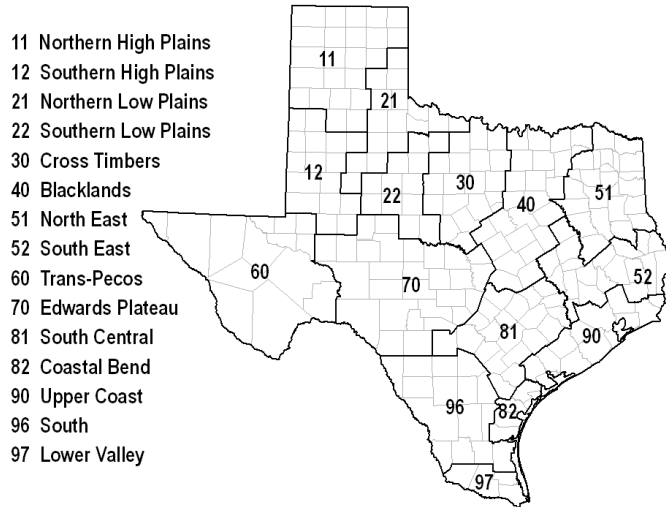
Crop	Crop Condition					Index ¹	
	Percent of Acreage					2016	2015
	Excellent	Good	Fair	Poor	Very Poor		
Wheat	14	35	37	12	2	72	68
Oats	3	35	31	26	5	60	71
Range and Pasture	5	33	40	17	5	--	--

¹ The formula for the condition index is $I = (5V + 25P + 60F + 90G + 110E)/100$ where I = crop condition index and V, P, F, G, E = percentage of crop rated very poor, poor, fair, good, excellent.

Top Soil Moisture Condition by District

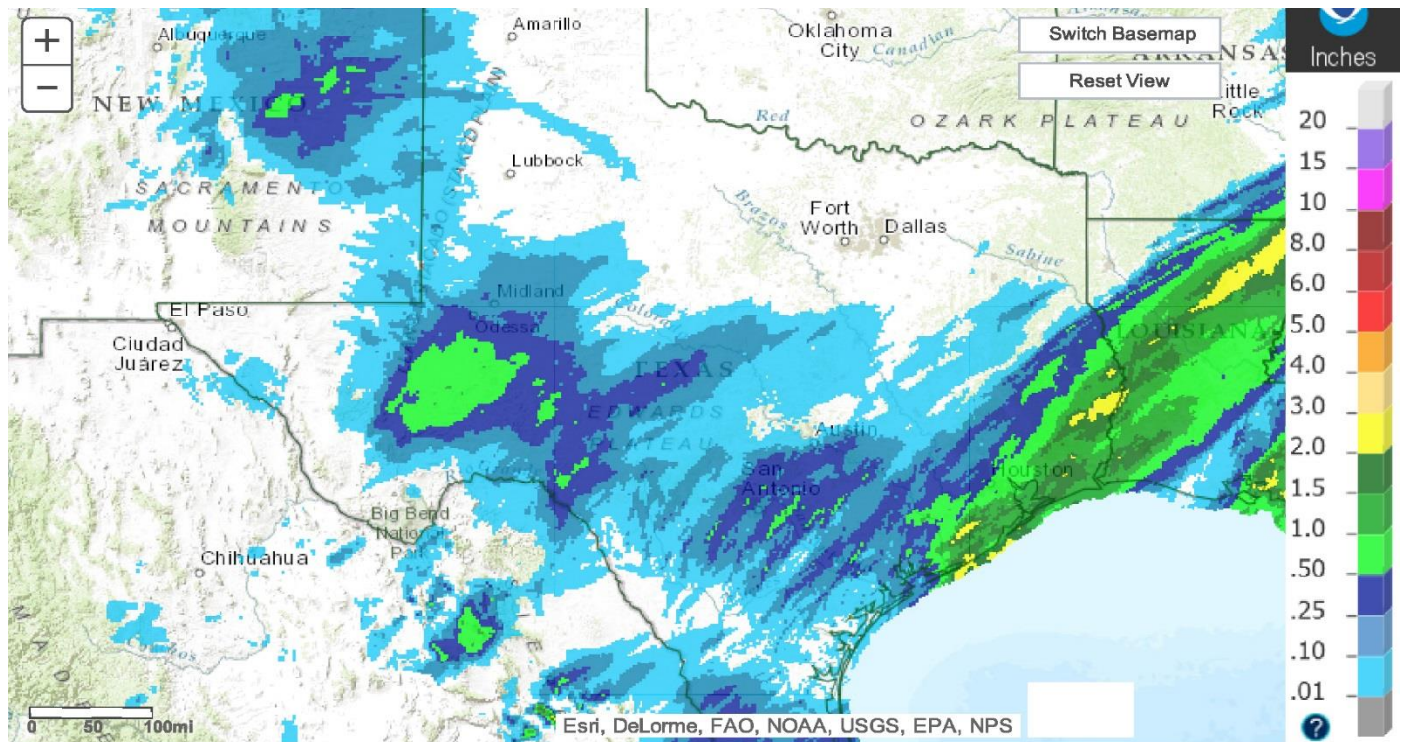
District	Subsoil Moisture Condition by District				Topsoil Moisture Condition by District				Days Suitable for Fieldwork
	Percentage of Acreage				Percentage of Acreage				
	Very Short	Short	Adequate	Surplus	Very Short	Short	Adequate	Surplus	
11	0	8	89	3	0	8	82	10	4.8
12	4	14	75	7	8	12	75	5	6.9
21	7	14	79	0	3	23	74	0	6.7
22	1	4	73	22	0	24	57	19	5.9
30	3	8	75	14	3	15	72	10	6.2
40	0	3	75	22	0	3	85	12	5.4
51	6	3	58	33	5	5	59	31	6.4
52	0	14	61	25	0	14	71	15	6.7
60	31	23	44	2	30	25	43	2	7.0
70	4	28	67	1	4	28	65	3	6.8
81	1	16	75	8	2	19	70	9	5.3
82	0	5	72	23	0	2	71	27	7.0
90	0	1	67	32	0	3	72	25	5.3
96	3	17	78	2	14	17	67	2	7.0
97	0	31	69	0	0	42	58	0	7.0
State	2	10	76	12	3	13	73	11	6.0

Texas Agricultural Districts



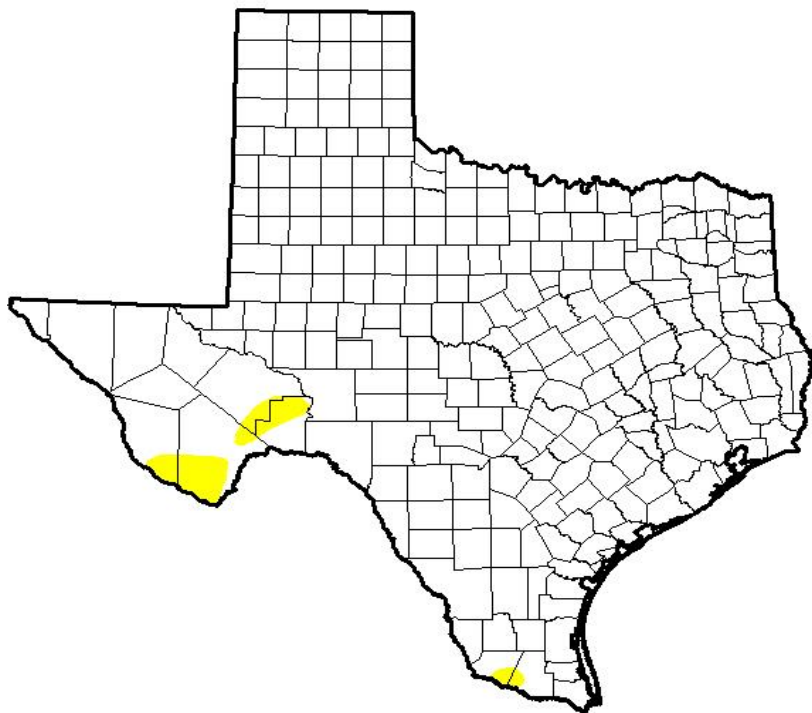
Seven Day Observed Regional Precipitation, January 31, 2016

Source: National Weather Service, www.nws.noaa.gov



Drought Monitor, Valid January 26, 2016

Source: National Drought Mitigation Center, a partnership with USDA, U.S. Department of Commerce/NOAA, <http://droughtmonitor.unl.edu>



Drought Conditions (Percent Area)

	None	D0-D4	D1-D4	D2-D4	D3-D4	D4
Current	98.05	1.95	0.00	0.00	0.00	0.00
Last Week <i>1/19/2016</i>	98.31	1.69	0.00	0.00	0.00	0.00
3 Months Ago <i>10/27/2015</i>	56.34	43.66	15.67	2.85	0.00	0.00
Start of Calendar Year <i>12/29/2015</i>	95.48	4.52	0.00	0.00	0.00	0.00
Start of Water Year <i>8/29/2015</i>	34.51	65.49	38.32	17.55	6.27	0.00
One Year Ago <i>1/27/2015</i>	41.42	58.58	39.22	23.93	11.24	3.05

Intensity:

- D0 Abnormally Dry
- D1 Moderate Drought
- D2 Severe Drought
- D3 Extreme Drought
- D4 Exceptional Drought

The Drought Monitor focuses on broad-scale conditions. Local conditions may vary. See accompanying text summary for forecast statements.

Author:

Mark Svoboda
National Drought Mitigation Center



Texas Crop Progress and Condition (February 2016)

USDA, National Agricultural Statistics Service, Southern Plains Regional Field Office