



Texas Crop Progress and Condition

Southern Plains Regional Field Office
Post Office Box 70 Austin, Texas 78767
(800) 626-3142 · FAX (855) 270-2725 · www.nass.usda.gov/tx

Issue: TX-CW0416

Weekly Summary for February 1 - 7

Released: February 8, 2016

Precipitation was sparse across the state last week. Light showers were experienced in areas of the High Plains and East Texas, with isolated areas in North East Texas receiving upwards of 0.5 of an inch of rainfall.

Small Grains: Winter Wheat and oats continued to progress, with some producers in areas of the Northern High Plains beginning to top dress in anticipation of spring growth.

Row Crops: Cotton harvest was nearing completion at 98 percent, 2 points behind normal. Field preparations for corn and sorghum planting were active in areas of the Blacklands and South Texas, while in areas of the Lower Valley planting of both crops had begun.

Fruit, Vegetable and Specialty Crops: Vegetable, sugarcane, and citrus harvest continued in the Lower Valley, while in areas of North Texas, onion planting was underway. South Texas growers continued irrigation operations.

Livestock, Range and Pasture: Supplemental feeding continued across much of the state. Pasture quality deteriorated in North East Texas from wet conditions, while South Texas pastures suffered from a lack of rainfall. Warm weather helped growth in the Blacklands.

| Stage | Crop Progress | | | |
|---------------------|--------------------|------------|------------|------------|
| | Percent of Acreage | | | |
| | Current | Prev. Week | Prev. Year | 5 Year Avg |
| Cotton | | | | |
| Harvested | 98 | 97 | 100 | 100 |
| Pecans | | | | |
| Harvested | 90 | 86 | 94 | 98 |
| Winter Wheat | | | | |
| Emerged | 98 | 97 | 98 | 97 |
| Oats | | | | |
| Emerged | 100 | 99 | 97 | 98 |

Crop Condition

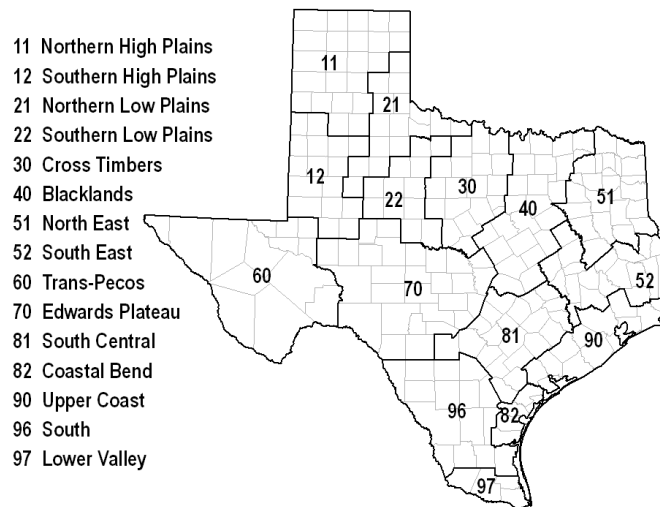
| Crop | Percent of Acreage | | | | | Index ¹ | |
|-------------------|--------------------|------|------|------|-----------|--------------------|------|
| | Excellent | Good | Fair | Poor | Very Poor | 2016 | 2015 |
| Wheat | 13 | 31 | 41 | 13 | 2 | 70 | 69 |
| Oats | 4 | 34 | 32 | 24 | 6 | 60 | 71 |
| Range and Pasture | 4 | 32 | 42 | 17 | 5 | -- | -- |

¹ The formula for the condition index is $I = (5V + 25P + 60F + 90G + 110E)/100$ where I = crop condition index and V, P, F, G, E = percentage of crop rated very poor, poor, fair, good, excellent.

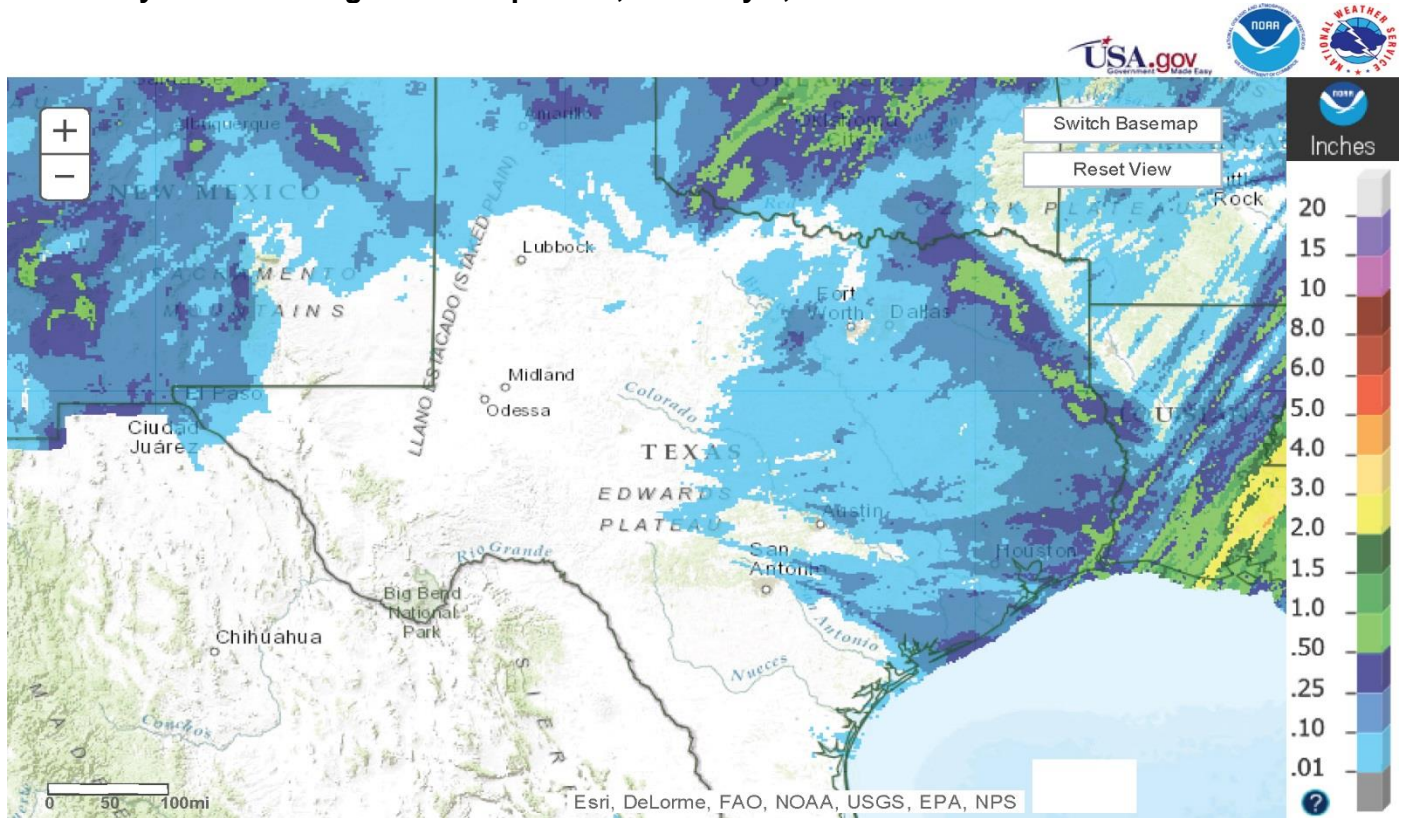
Top Soil Moisture Condition by District

| District | Topsoil Moisture Condition by District | | | | Subsoil Moisture Condition by District | | | | Days Suitable for Fieldwork |
|----------|--|-------|----------|---------|--|-------|----------|---------|-----------------------------|
| | Percentage of Acreage | | | | Percentage of Acreage | | | | |
| | Very Short | Short | Adequate | Surplus | Very Short | Short | Adequate | Surplus | |
| 11 | 0 | 12 | 80 | 8 | 0 | 8 | 91 | 1 | 6.2 |
| 12 | 9 | 13 | 74 | 4 | 5 | 16 | 73 | 6 | 6.7 |
| 21 | 3 | 42 | 55 | 0 | 7 | 19 | 74 | 0 | 6.8 |
| 22 | 0 | 29 | 54 | 17 | 0 | 6 | 73 | 21 | 6.4 |
| 30 | 2 | 30 | 60 | 8 | 3 | 13 | 67 | 17 | 6.4 |
| 40 | 1 | 8 | 83 | 8 | 0 | 4 | 82 | 14 | 6.2 |
| 51 | 6 | 8 | 67 | 19 | 5 | 6 | 66 | 23 | 6.5 |
| 52 | 0 | 21 | 69 | 10 | 0 | 16 | 60 | 24 | 6.6 |
| 60 | 31 | 27 | 40 | 2 | 31 | 23 | 44 | 2 | 7.0 |
| 70 | 7 | 45 | 45 | 3 | 6 | 43 | 50 | 1 | 6.3 |
| 81 | 1 | 24 | 67 | 8 | 1 | 20 | 71 | 8 | 6.5 |
| 82 | 0 | 23 | 50 | 27 | 0 | 6 | 71 | 23 | 7.0 |
| 90 | 0 | 9 | 73 | 18 | 1 | 3 | 69 | 27 | 6.8 |
| 96 | 14 | 54 | 31 | 1 | 15 | 36 | 47 | 2 | 6.6 |
| 97 | 0 | 59 | 41 | 0 | 0 | 19 | 81 | 0 | 7.0 |
| State | 3 | 21 | 68 | 8 | 3 | 13 | 74 | 10 | 6.5 |

Texas Agricultural Districts

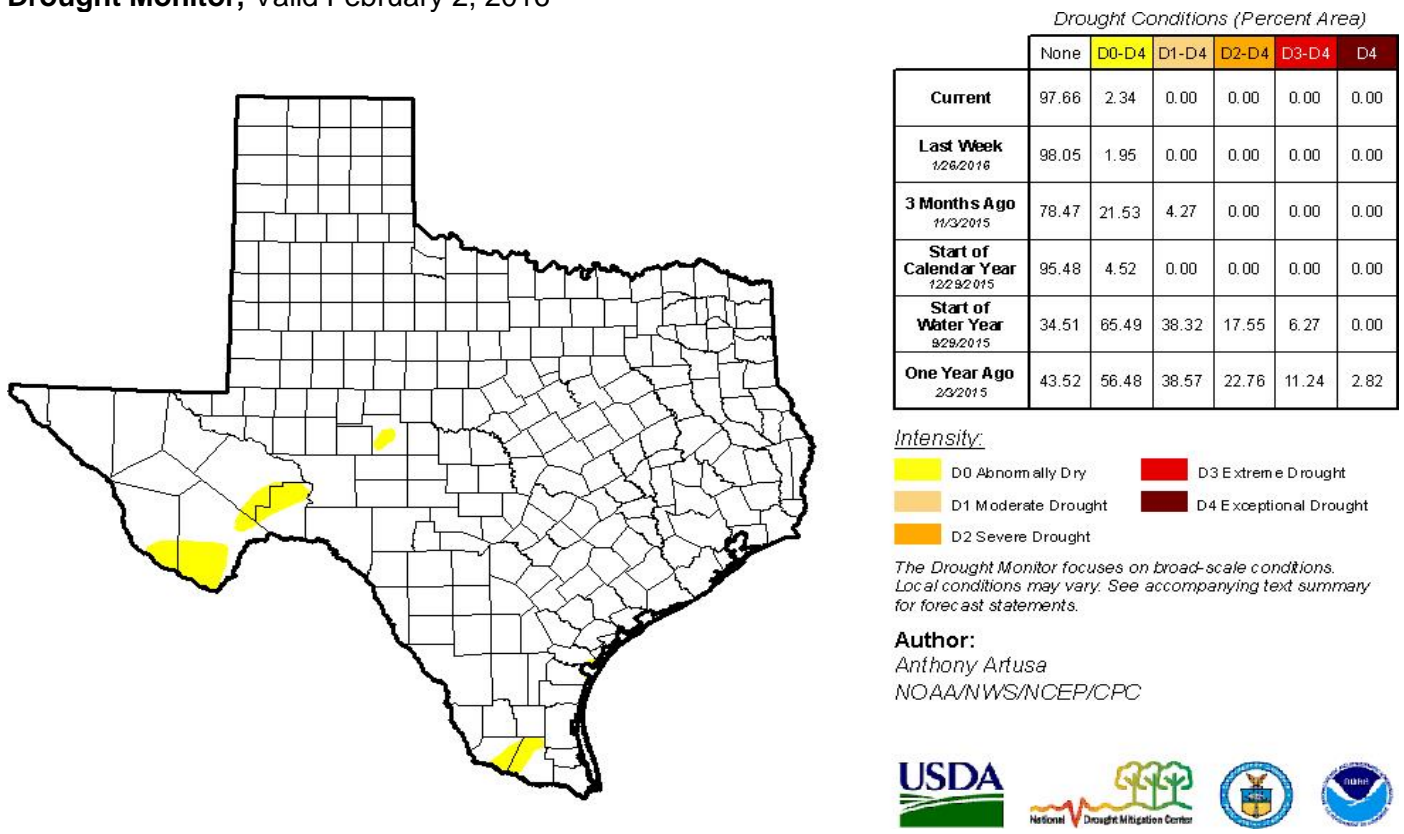


Seven Day Observed Regional Precipitation, February 7, 2016



Source: National Weather Service, www.nws.noaa.gov

Drought Monitor, Valid February 2, 2016



Source: National Drought Mitigation Center, a partnership with USDA, U.S. Department of Commerce/NOAA, <http://droughtmonitor.unl.edu>

Texas Crop Progress and Condition (February 2016)

USDA, National Agricultural Statistics Service, Southern Plains Regional Field Office