



# Texas Crop Progress and Condition

Southern Plains Regional Field Office  
Post Office Box 70 Austin, Texas 78767  
(800) 626-3142 · FAX (855) 270-2725 · www.nass.usda.gov/tx

Issue: TX-CW0716

Weekly Summary for February 22 - 28

Released: February 29, 2016

Most areas of the state received from trace amounts of precipitation to upwards of 3.0 inches of rainfall during the past week. Areas stretching from the Blacklands through South Central Texas, and through East Texas received from 2.0 inches up to 3.0 inches. Coastal Bend, South Texas, and Lower Valley received up to an inch of rainfall.

### Crop Progress

Stage	Percent of Acreage			
	Current	Prev. Week	Prev. Year	5 Year Avg
<b>Pecans</b>				
Harvested	99	98	99	100

**Small Grains:** In areas of the High Plains producers were concerned with above normal temperatures as wheat continued to progress out of the dormancy state. Statewide, wheat and oat conditions were mostly fair to good.

**Row Crops:** Preparations for the upcoming cotton crop continued in areas of the Northern Low Plains and Edwards Plateau, while cotton planting was active in the Lower Valley. In areas of the Blacklands, the Coastal Bend, and South Central, corn planting was active. Sorghum planting began in the Coastal Bend, Upper Coast, and the Lower Valley.

**Fruit, Vegetable and Specialty Crops:** Fruit tree producers in North East Texas continued to prune and thin tree limbs. Harvest of citrus, sugarcane, and vegetables continued in the Lower Valley.

**Livestock, Range and Pasture:** Statewide, pastures began to improve with recent rainfall, but there were signs of stress from the lack of precipitation in areas of South Texas and the Lower Valley. Cattle remained in good condition as supplemental feeding continued in the Cross Timbers and the Blacklands.

### Crop Condition

Crop	Percent of Acreage					Index <sup>1</sup>	
	Excellent	Good	Fair	Poor	Very Poor	2016	2015
Wheat	9	31	45	13	2	68	71
Oats	3	27	42	22	6	59	70
Range and Pasture	3	30	44	18	5	--	--

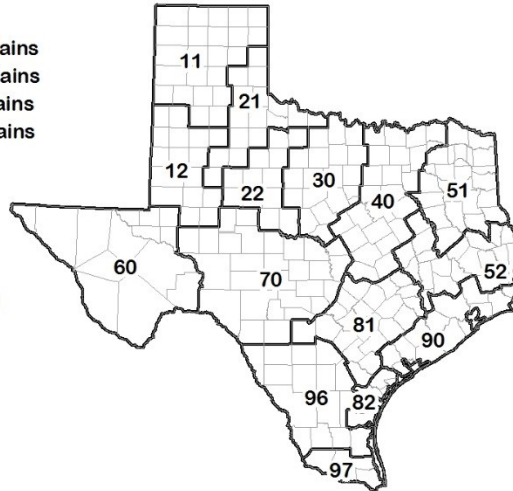
<sup>1</sup> The formula for the condition index is  $I = (5V + 25P + 60F + 90G + 110E)/100$  where I = crop condition index and V, P, F, G, E = percentage of crop rated very poor, poor, fair, good, excellent.

### Top Soil Moisture Condition by District

District	Topsoil Moisture Condition by District				Subsoil Moisture Condition by District				Days Suitable for Fieldwork
	Percentage of Acreage				Percentage of Acreage				
	Very Short	Short	Adequate	Surplus	Very Short	Short	Adequate	Surplus	
11	5	35	56	4	0	20	80	0	6.6
12	9	34	55	2	4	30	64	2	6.4
21	5	42	53	0	7	28	65	0	6.4
22	4	41	51	4	1	29	52	18	5.3
30	4	30	62	4	4	16	75	5	5.3
40	3	9	67	21	1	7	78	14	3.7
51	5	6	69	20	6	3	70	21	5.9
52	2	16	74	8	1	20	72	7	5.4
60	37	24	39	0	35	25	40	0	6.8
70	10	33	55	2	10	55	34	1	4.5
81	2	32	60	6	1	29	61	9	4.9
82	5	53	37	5	2	11	80	7	6.0
90	2	13	83	2	2	7	83	8	4.2
96	5	34	60	1	6	20	73	1	6.2
97	0	75	25	0	0	29	71	0	7.0
State	3	22	69	6	5	31	58	6	5.7

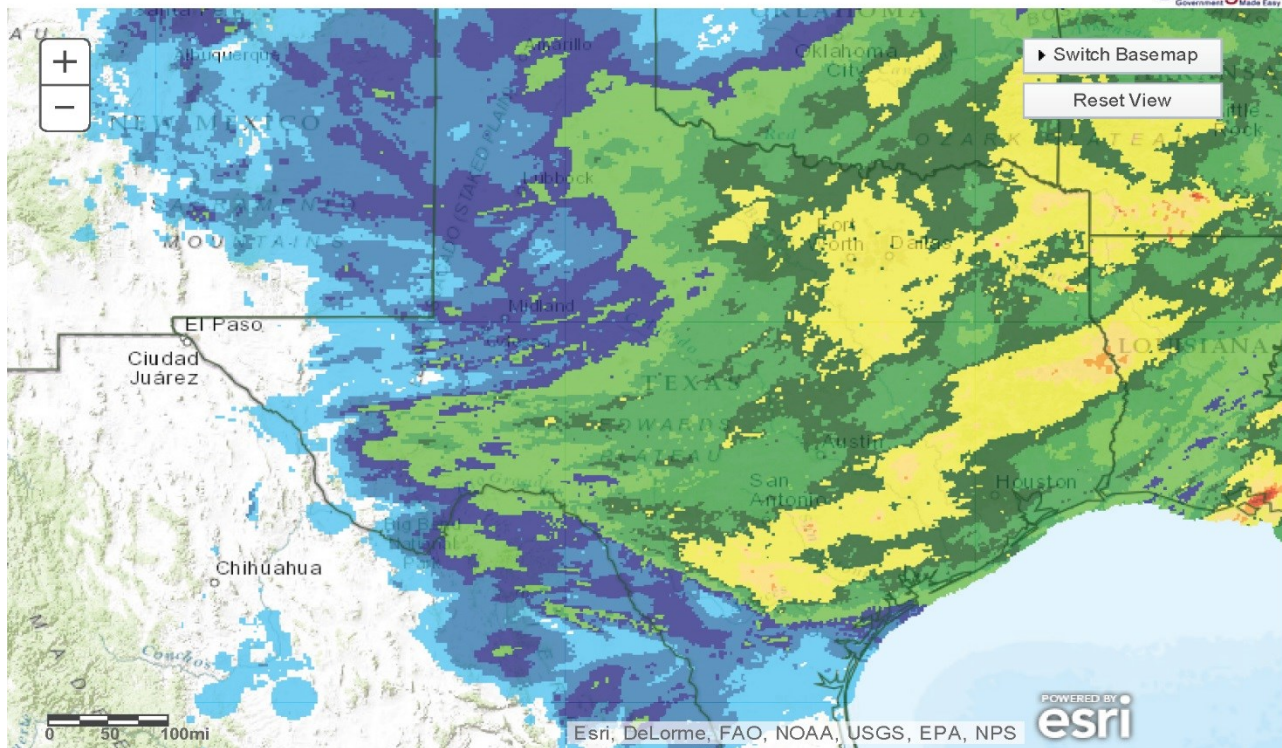
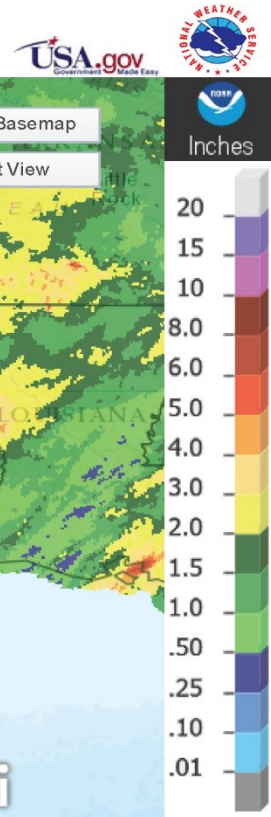
### Texas Agricultural Districts

- 11 Northern High Plains
- 12 Southern High Plains
- 21 Northern Low Plains
- 22 Southern Low Plains
- 30 Cross Timbers
- 40 Blacklands
- 51 North East
- 52 South East
- 60 Trans-Pecos
- 70 Edwards Plateau
- 81 South Central
- 82 Coaster Bend
- 90 Upper Coast
- 96 South
- 97 Lower Valley

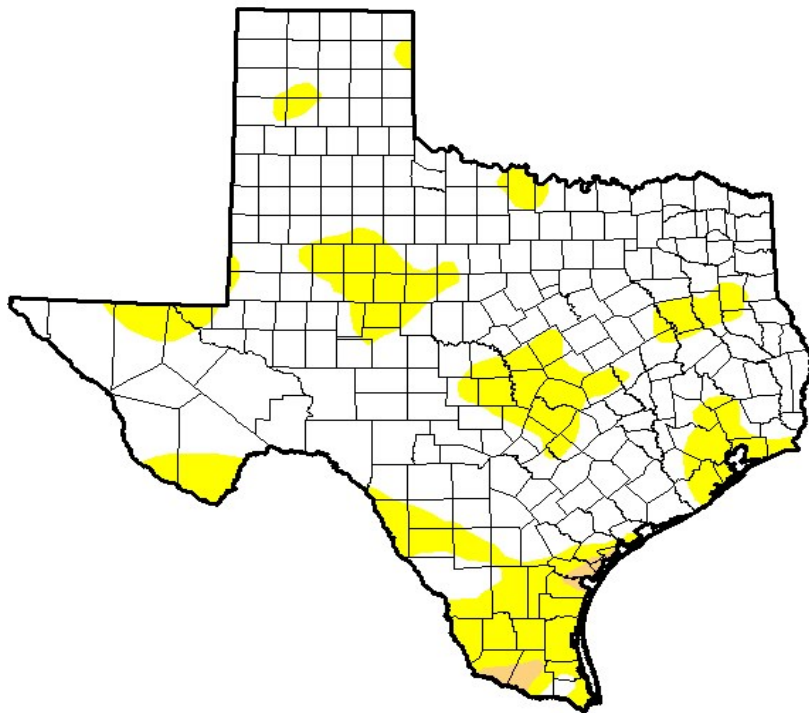


# Seven Day Observed Regional Precipitation, February 28, 2016

Source: National Weather Service, [www.nws.noaa.gov](http://www.nws.noaa.gov)



## Drought Monitor, Valid February 23, 2016



Drought Conditions (Percent Area)

	None	D0-D4	D1-D4	D2-D4	D3-D4	D4
<b>Current</b>	77.81	22.39	0.79	0.00	0.00	0.00
<b>Last Week</b> <i>2/16/2016</i>	55.16	44.84	3.57	0.00	0.00	0.00
<b>3 Months Ago</b> <i>11/24/2015</i>	92.65	7.35	0.61	0.00	0.00	0.00
<b>Start of Calendar Year</b> <i>12/29/2015</i>	95.48	4.52	0.00	0.00	0.00	0.00
<b>Start of Water Year</b> <i>9/29/2015</i>	34.51	65.49	38.32	17.55	6.27	0.00
<b>One Year Ago</b> <i>2/24/2015</i>	38.35	61.65	43.39	27.86	14.34	4.46

Intensity:

- D0 Abnormally Dry
- D1 Moderate Drought
- D2 Severe Drought
- D3 Extreme Drought
- D4 Exceptional Drought

*The Drought Monitor focuses on broad-scale conditions. Local conditions may vary. See accompanying text summary for forecast statements.*

**Author:**

*Eric Luebbehusen  
U.S. Department of Agriculture*



Source: National Drought Mitigation Center, a partnership with USDA, U.S. Department of Commerce/NOAA, <http://droughtmonitor.unl.edu>

## Texas Crop Progress and Condition (February 2016)

USDA, National Agricultural Statistics Service, Southern Plains Regional Field Office