



Texas Crop Progress and Condition

Southern Plains Regional Field Office, Post Office Box 70 Austin, Texas 78767
(800) 626-3142 · FAX (855) 270-2725 · www.nass.usda.gov/tx

Issue: TX-CW1316

Weekly Summary for April 04 - April 10

Released: April 11, 2016

Dry and windy conditions were reported throughout most of the state during the early part of the week. Towards the end of the week, traces amounts of precipitation and foggy weather were observed. Parts of the High and Low Plains, and the Blacklands received a half an inch to an inch of precipitation. The remainder of the state observed only trace amounts to a quarter of an inch of precipitation.

Stage	Crop Progress			
	Percent of Acreage			
	Current	Prev. Week	Prev. Year	5 Year Avg
Corn				
Planted	46	42	43	52
Emerged	33	23	18	35
Cotton				
Planted	8	5	4	10
Rice				
Planted	65	47	45	60
Emerged	44	20	11	32
Sorghum				
Planted	40	36	34	46
Winter Wheat				
Headed	20	12	18	22
Oats				
Headed	19	15	7	38

Small Grains: Producers in the Northern Low Plains continued to irrigate wheat fields. Windy, dry conditions in the Northern High Plains and the Edwards Plateau continued to stress winter wheat. Wheat conditions improved in the Southern Low Plains due to warmer weather. In South and Central Texas, wheat and oats began the heading stage.

Row Crops: Cotton and soybean planting were in full swing in the Upper Coast. Corn and sorghum planting progressed, and rice planting and flushing were beginning to wind down in South Texas. Cotton planting continued in the Coastal Blend.

Fruit, Vegetable and Specialty Crop: Harvest of sugarcane, citrus, and vegetables continued in the Lower Valley. Warm season vegetables continued to be planted in North East Texas. In South Texas, the potato crop reached the flowering stage, pecan trees were getting green and looking healthy, and carrots and onions made good progress.

Livestock, Range and Pasture: Livestock continued to graze wheat pasture in the Northern Low Plains, South Texas, the Upper Coast, and Edwards Plateau. Livestock remained in mostly good condition. Recent rainfall has improved pasture conditions, resulting in a significant decrease in supplemental feeding.

Crop	Crop Condition					Index ¹	
	Percent of Acreage					2016	2015
	Excellent	Good	Fair	Poor	Very Poor		
Wheat	7	38	44	9	2	71	73
Oats	8	36	41	12	3	69	74
Range and Pasture	9	41	39	9	2	--	--

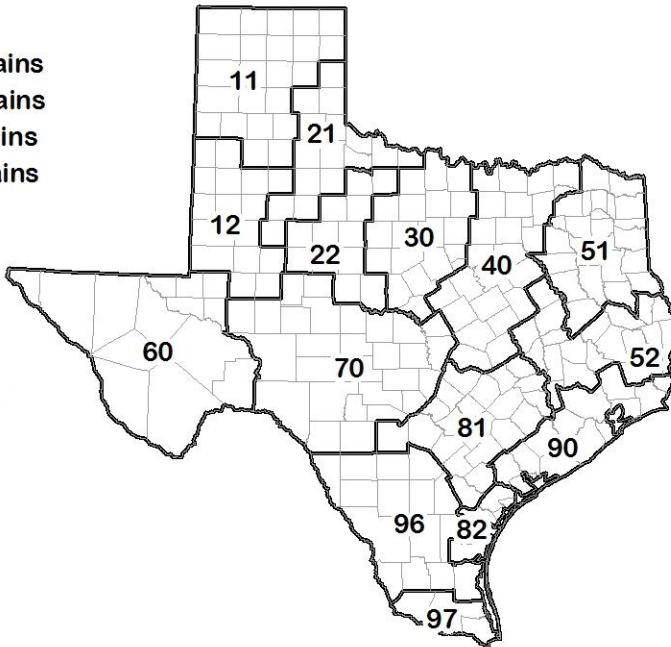
¹ The formula for the condition index is $I = (5V + 25P + 60F + 90G + 110E)/100$ where I = crop condition index and V, P, F, G, E = percentage of crop rated very poor, poor, fair, good, excellent.

Soil Moisture and Days Suitable by District

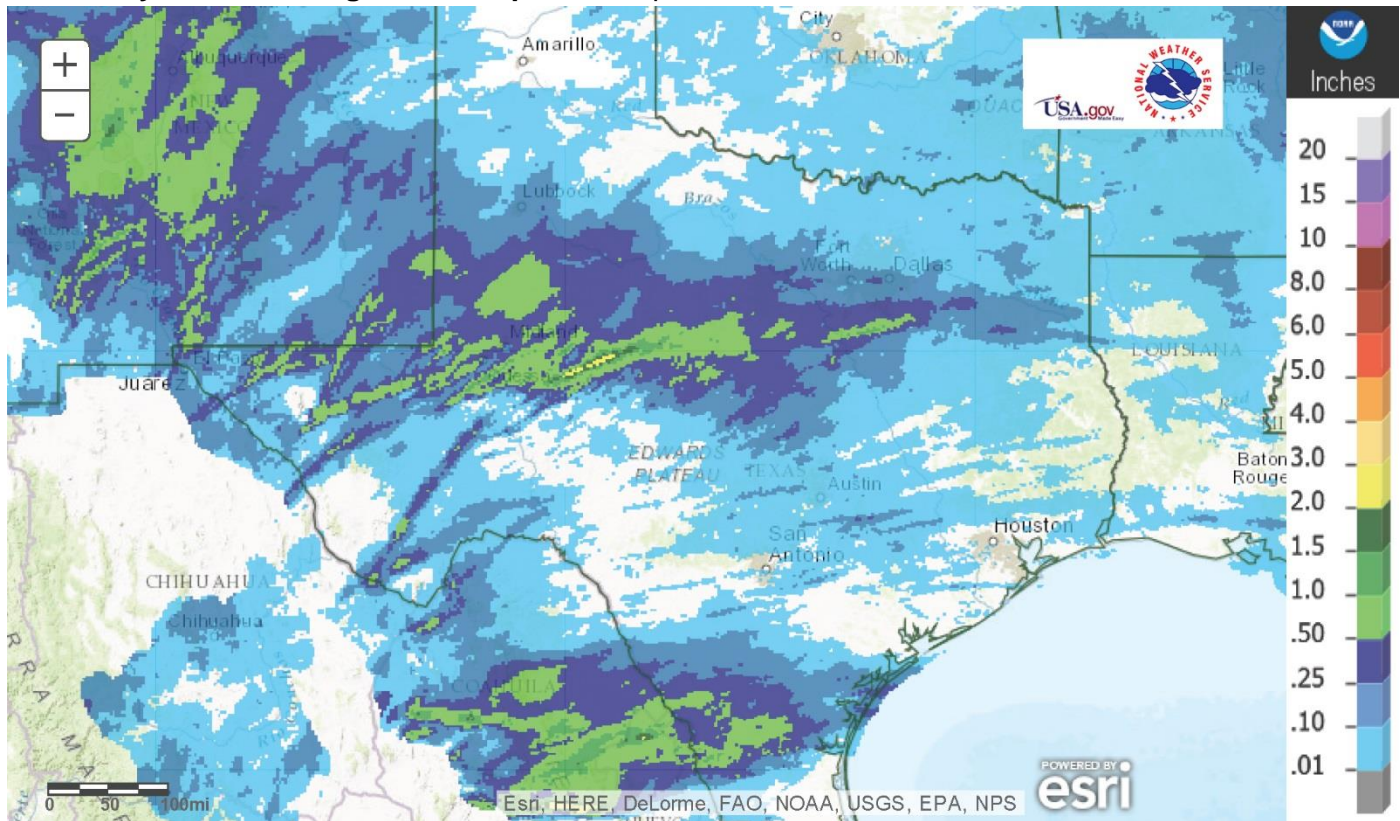
District	Topsoil Moisture Condition by District				Subsoil Moisture Condition by District				Days Suitable for Fieldwork
	Percentage of Acreage				Percentage of Acreage				
	Very Short	Short	Adequate	Surplus	Very Short	Short	Adequate	Surplus	
11	20	65	15	0	10	42	48	0	6.9
12	14	51	35	0	1	45	53	1	6.5
21	18	55	27	0	14	43	43	0	7.0
22	13	57	29	1	7	36	54	3	6.2
30	5	32	60	3	6	26	66	2	6.3
40	0	12	83	5	0	7	83	10	6.4
51	1	5	66	28	0	5	68	27	6.3
52	1	7	80	12	0	9	80	11	6.5
60	48	19	33	0	46	21	33	0	6.0
70	8	40	47	5	7	33	57	3	6.4
81	1	27	65	7	1	18	72	9	6.5
82	0	6	70	24	0	3	60	37	7.0
90	2	38	57	3	1	23	66	10	6.6
96	5	40	55	0	5	33	61	1	6.8
97	0	80	20	0	0	26	74	0	7.0
State	10	43	43	4	5	30	60	5	6.6

Texas Agricultural Districts

- 11 Northern High Plains
- 12 Southern High Plains
- 21 Northern Low Plains
- 22 Southern Low Plains
- 30 Cross Timbers
- 40 Blacklands
- 51 North East
- 52 South East
- 60 Trans-Pecos
- 70 Edwards Plateau
- 81 South Central
- 82 Coaster Bend
- 90 Upper Coast
- 96 South
- 97 Lower Valley

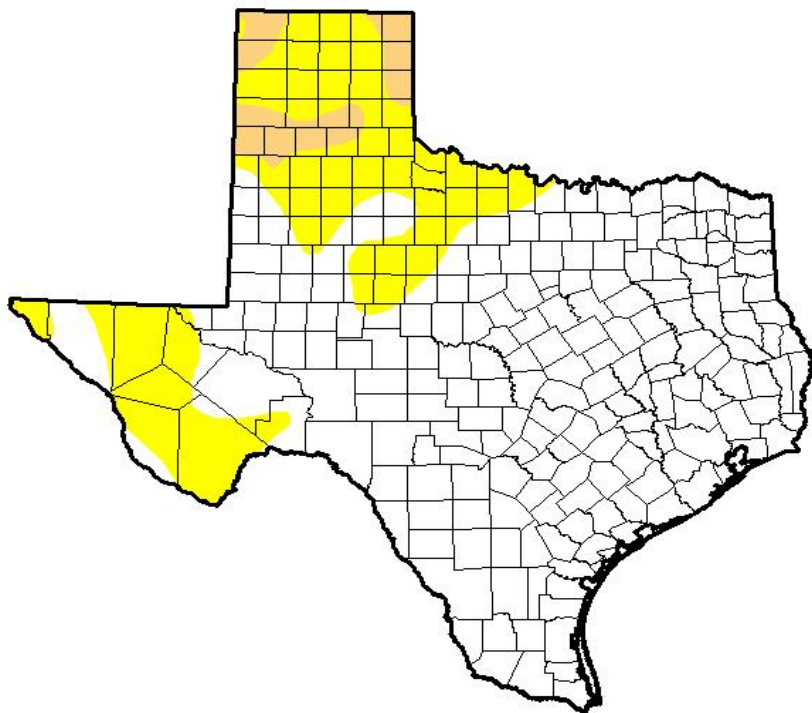


Seven Day Observed Regional Precipitation, April 10, 2016



Source: National Weather Service, www.nws.noaa.gov

Drought Monitor, Valid April 5, 2016



Drought Conditions (Percent Area)

	None	D0-D4	D1-D4	D2-D4	D3-D4	D4
Current	74.03	25.97	3.94	0.00	0.00	0.00
Last Week <i>3/29/2016</i>	75.16	24.84	2.96	0.00	0.00	0.00
3 Months Ago <i>1/5/2016</i>	98.31	1.69	0.00	0.00	0.00	0.00
Start of Calendar Year <i>12/29/2015</i>	95.48	4.52	0.00	0.00	0.00	0.00
Start of Water Year <i>9/29/2015</i>	34.51	65.49	38.32	17.55	6.27	0.00
One Year Ago <i>4/7/2015</i>	51.15	48.85	36.37	25.39	15.46	3.87

Intensity:

- D0 Abnormally Dry
- D1 Moderate Drought
- D2 Severe Drought
- D3 Extreme Drought
- D4 Exceptional Drought

The Drought Monitor focuses on broad-scale conditions. Local conditions may vary. See accompanying text summary for forecast statements.

Author:
Richard Tinker
CPC/NOAA/NWS/NCEP



Source: National Drought Mitigation Center, a partnership with USDA, U.S. Department of Commerce/NOAA, <http://droughtmonitor.unl.edu>