



Texas Crop Progress and Condition

Southern Plains Regional Field Office
Post Office Box 70 Austin, Texas 78767
(800) 626-3142 · FAX (855) 270-2725 · www.nass.usda.gov/tx

Issue: TX-CW1416

Weekly Summary for April 11- April 17

Released: April 18, 2016

Many parts of the state received measurable rainfall again last week. Central and East Texas saw as much as 3 to 5 inches, while pockets in South Central and the Upper Coast measured 6 to 10 inches. Areas from the High and Low Plains to the Trans-Pecos also received scattered showers and localized accumulations up to 2 inches. Areas of Central Texas recorded large hail and significant damage to crops.

Stage	Crop Progress			
	Percent of Acreage			
	Current	Prev. Week	Prev. Year	5 Year Avg
Corn				
Planted	49	46	50	56
Emerged	40	33	33	45
Cotton				
Planted	10	8	6	12
Rice				
Planted	75	65	59	74
Emerged	59	44	26	51
Sorghum				
Planted	42	40	44	54
Soybeans				
Planted	11	--	9	34
Winter Wheat				
Headed	35	20	42	37
Oats				
Headed	40	19	31	55

Small Grains: Winter wheat continued to progress in most areas, due to recent rainfall. Wheat began heading in areas of the Blacklands. Hail damaged some winter wheat in areas of the Cross Timbers and South Central Texas.

Row Crops: Cotton planting was underway in South Texas and the Lower Valley. Preparations for cotton continued in the Trans-Pecos, meanwhile field preparations slowed due to rainfall in the areas of the Northern Low and High Plains. Corn planting began in the Northern High Plains while sorghum planting continued in the Southern Low Plains. Heavy rains in the Upper Coast delayed some rice planting.

Fruit, Vegetable, and Specialty Crops: In areas of North East Texas, vegetables made good progress. Harvest of sugarcane, citrus, and vegetables continued in areas of the Lower Valley. In South Texas, large hail damaged some onion fields.

Livestock, Range, and Pasture: Livestock conditions were rated good across the state. Grazing was more prevalent as range and pasture conditions improved where precipitation and warmer temperatures occurred. In North East Texas and South Texas, most pastures were greening and supplemental feeding eased. Weed spraying was underway in areas of the Edwards Plateau.

Crop Condition

Crop	Percent of Acreage					Index ¹	
	Excellent	Good	Fair	Poor	Very Poor	2016	2015
Wheat	6	39	44	9	2	70	72
Oats	8	36	41	12	3	69	76
Range and Pasture	10	41	38	9	2	--	--

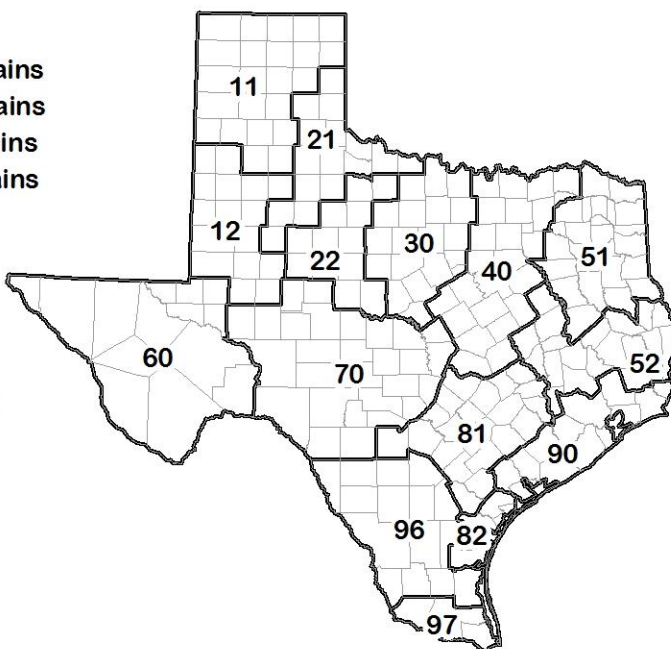
¹ The formula for the condition index is $I = (5V + 25P + 60F + 90G + 110E)/100$ where I = crop condition index and V, P, F, G, E = percentage of crop rated very poor, poor, fair, good, excellent.

Soil Moisture and Days Suitable by District

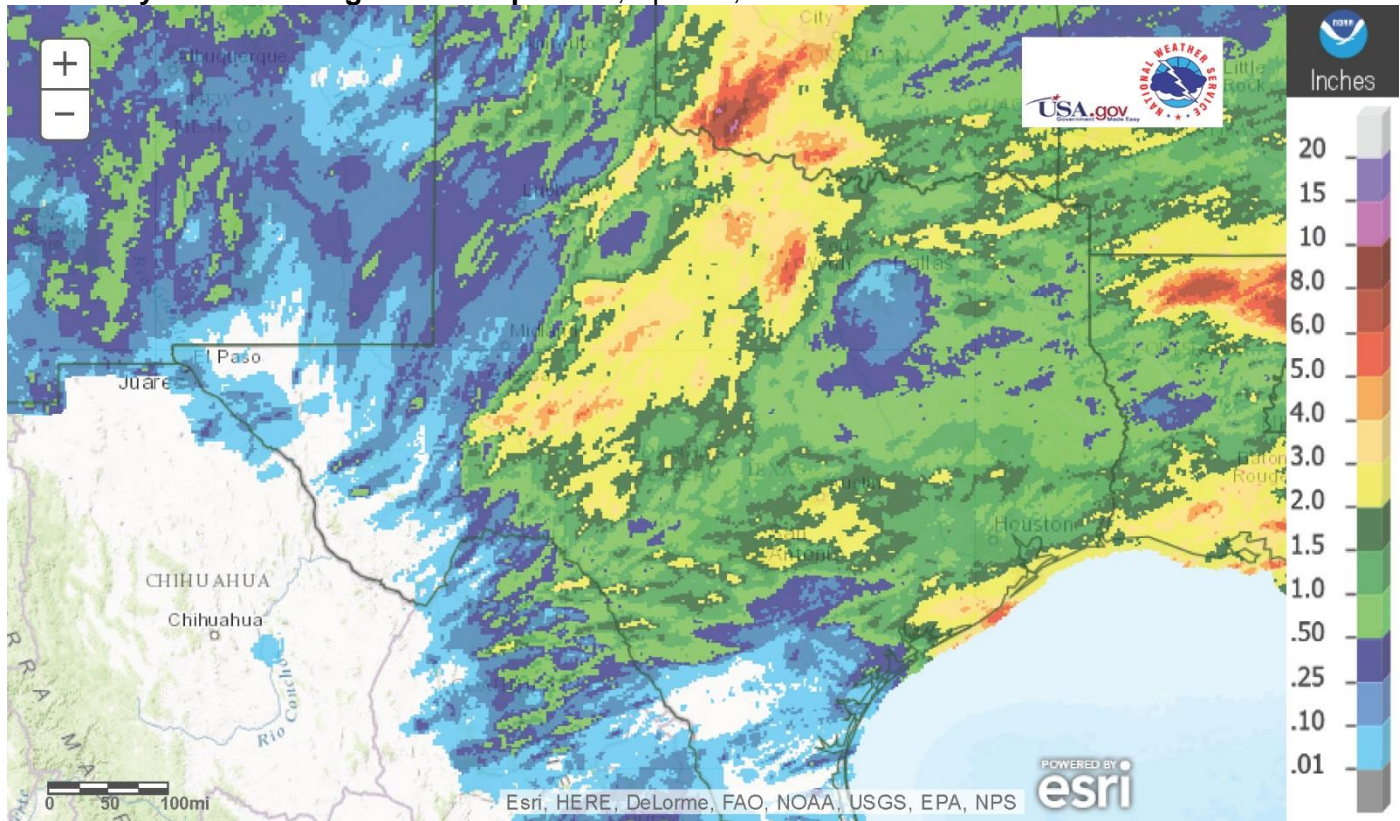
District	Topsoil Moisture Condition by District				Subsoil Moisture Condition by District				Days Suitable for Fieldwork
	Percentage of Acreage				Percentage of Acreage				
	Very Short	Short	Adequate	Surplus	Very Short	Short	Adequate	Surplus	
11	19	60	20	1	10	41	49	0	6.2
12	14	42	40	4	1	39	55	5	5.4
21	12	29	54	5	14	26	57	3	5.4
22	2	29	50	19	2	10	81	7	4.5
30	4	18	65	13	5	22	69	4	5.2
40	0	8	70	22	0	5	69	26	4.5
51	0	2	62	36	0	3	59	38	4.4
52	1	6	60	33	1	5	61	33	3.2
60	49	18	33	0	47	20	33	0	6.7
70	5	20	62	13	3	22	68	7	3.8
81	1	21	71	7	1	17	72	10	5.1
82	2	34	56	8	2	15	74	9	7.0
90	0	31	56	13	0	20	69	11	3.9
96	4	19	76	1	4	16	79	1	6.4
97	0	80	20	0	0	26	74	0	7.0
State	9	34	47	10	5	24	62	9	5.3

Texas Agricultural Districts

- 11 Northern High Plains
- 12 Southern High Plains
- 21 Northern Low Plains
- 22 Southern Low Plains
- 30 Cross Timbers
- 40 Blacklands
- 51 North East
- 52 South East
- 60 Trans-Pecos
- 70 Edwards Plateau
- 81 South Central
- 82 Coaster Bend
- 90 Upper Coast
- 96 South
- 97 Lower Valley

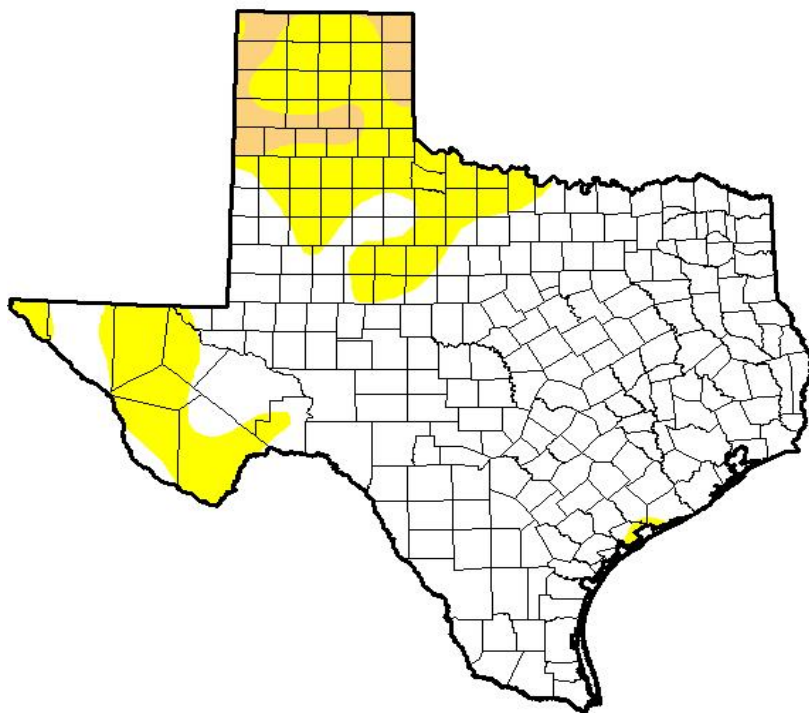


Seven Day Observed Regional Precipitation, April 17, 2016



Source: National Weather Service, www.nws.noaa.gov

Drought Monitor, Valid April 12, 2016



Drought Conditions (Percent Area)

	None	D0-D4	D1-D4	D2-D4	D3-D4	D4
Current	74.56	25.44	4.06	0.00	0.00	0.00
Last Week <i>4/5/2016</i>	74.03	25.97	3.94	0.00	0.00	0.00
3 Months Ago <i>1/12/2016</i>	98.31	1.69	0.00	0.00	0.00	0.00
Start of Calendar Year <i>12/29/2015</i>	95.48	4.52	0.00	0.00	0.00	0.00
Start of Water Year <i>9/29/2015</i>	34.51	65.49	38.32	17.55	6.27	0.00
One Year Ago <i>4/14/2015</i>	52.88	47.12	35.25	24.65	14.91	3.34

Intensity:

- D0 Abnormally Dry
- D1 Moderate Drought
- D2 Severe Drought
- D3 Extreme Drought
- D4 Exceptional Drought

The Drought Monitor focuses on broad-scale conditions. Local conditions may vary. See accompanying text summary for forecast statements.

Author:

Richard Tinker
CPC/NOAA/NWS/NCEP



Source: National Drought Mitigation Center, a partnership with USDA, U.S. Department of Commerce/NOAA, <http://droughtmonitor.unl.edu>