



Texas Crop Progress and Condition

Southern Plains Regional Field Office
Post Office Box 70 Austin, Texas 78767
(800) 626-3142 · FAX (855) 270-2725 · www.nass.usda.gov/tx

Issue: TX-CW1616

Weekly Summary for April 25- May 1

Released: May 2, 2016

The majority of the state received precipitation last week, which caused planting delays for many of the state's crops. Areas of East Texas received between 2 to 8 inches, while areas of Central Texas received only 0.1 to 1.5 inches. The Trans-Pecos and areas of the High Plains and the Upper Coast reported little to no rainfall. Strong winds and hail were reported in several areas of the state.

Small Grains: Winter wheat and oats continued to mature throughout the state, with some hail damage reported in areas of the Southern Low Plains and the Cross Timbers. Areas of the Edwards Plateau experienced some damage due to high winds.

Row Crops: Cotton planting was delayed in areas of the Northern Low and High Plains, the Blacklands, and Northeast Texas, due to wet conditions. Corn was beginning to emerge in areas of the Blacklands and South Texas. Sorghum planting remained active throughout the state, while producers in the Southern Low Plains applied fertilizer. Producers in the Southern High Plains began planting peanuts.

Fruit, Vegetable and Specialty Crops: Spring onions continued to be harvested in the Lower Valley and potato fields were being prepared for harvest in South Texas. Pecan trees in South Texas were reported to be in the early stages of blooming. In Southeast Texas, vegetable gardens were being prepared for the upcoming planting season.

Livestock, Range and Pasture: Livestock conditions were mostly good across the state. Range and pasture development continued to make good progress throughout the state, contributing to adequate forage for livestock.

Stage	Crop Progress			
	Percent of Acreage			
	Current	Prev. Week	Prev. Year	5 Year Avg
Corn				
Planted	66	52	66	71
Emerged	47	43	57	58
Cotton				
Planted	13	11	12	17
Squaring	1	N/A	1	N/A
Peanuts				
Planted	12	2	3	7
Rice				
Planted	79	76	65	85
Emerged	76	68	62	75
Sorghum				
Planted	57	50	61	63
Soybeans				
Planted	32	24	40	55
Emerged	23	10	12	22
Winter Wheat				
Headed	73	50	76	66
Oats				
Headed	75	60	81	85

Crop Condition

Crop	Percent of Acreage					Index ¹	
	Excellent	Good	Fair	Poor	Very Poor	2016	2015
Rice	10	39	40	5	6	72	75
Sorghum	11	42	40	5	2	75	65
Wheat	10	39	41	8	2	73	72
Oats	8	42	35	12	3	71	75
Range and Pasture	16	41	34	7	2	--	--

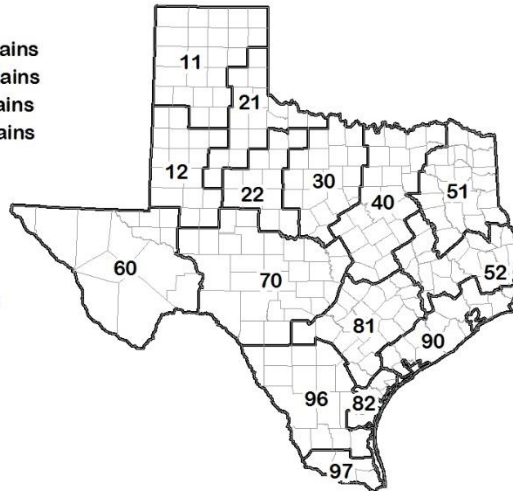
¹ The formula for the condition index is $I = (5V + 25P + 60F + 90G + 110E)/100$ where I = crop condition index and V, P, F, G, E = percentage of crop rated very poor, poor, fair, good, excellent.

Soil Moisture and Days Suitable by District

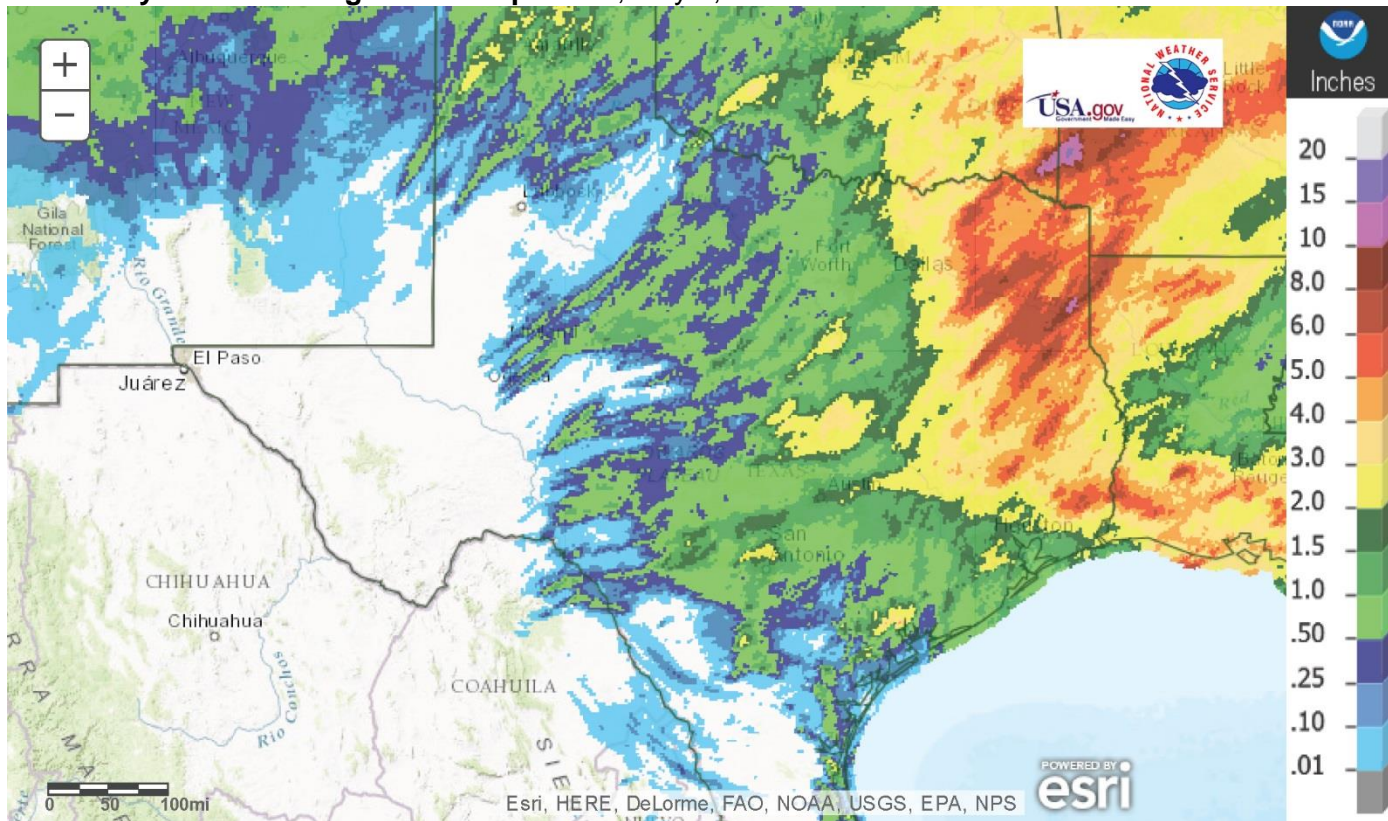
District	Topsoil Moisture Condition by District				Subsoil Moisture Condition by District				Days Suitable for Fieldwork
	Percentage of Acreage				Percentage of Acreage				
	Very Short	Short	Adequate	Surplus	Very Short	Short	Adequate	Surplus	
11	10	43	40	7	8	29	63	0	5.5
12	15	44	40	1	1	44	55	0	6.7
21	5	18	70	7	8	27	60	5	6.2
22	4	12	75	9	2	6	80	12	4.0
30	1	3	69	27	1	6	74	19	4.8
40	0	0	54	46	0	1	54	45	2.9
51	0	0	49	51	0	0	49	51	4.1
52	0	2	33	65	0	2	44	54	4.1
60	53	15	32	0	51	18	31	0	7.0
70	2	11	67	20	3	13	67	17	4.2
81	1	14	65	20	1	13	73	13	2.0
82	5	39	47	9	2	16	73	9	5.0
90	0	0	22	78	0	0	48	52	1.9
96	15	21	64	0	4	29	67	0	6.6
97	0	74	26	0	0	26	74	0	7.0
State	7	24	49	20	4	20	61	15	4.8

Texas Agricultural Districts

- 11 Northern High Plains
- 12 Southern High Plains
- 21 Northern Low Plains
- 22 Southern Low Plains
- 30 Cross Timbers
- 40 Blacklands
- 51 North East
- 52 South East
- 60 Trans-Pecos
- 70 Edwards Plateau
- 81 South Central
- 82 Coaster Bend
- 90 Upper Coast
- 96 South
- 97 Lower Valley

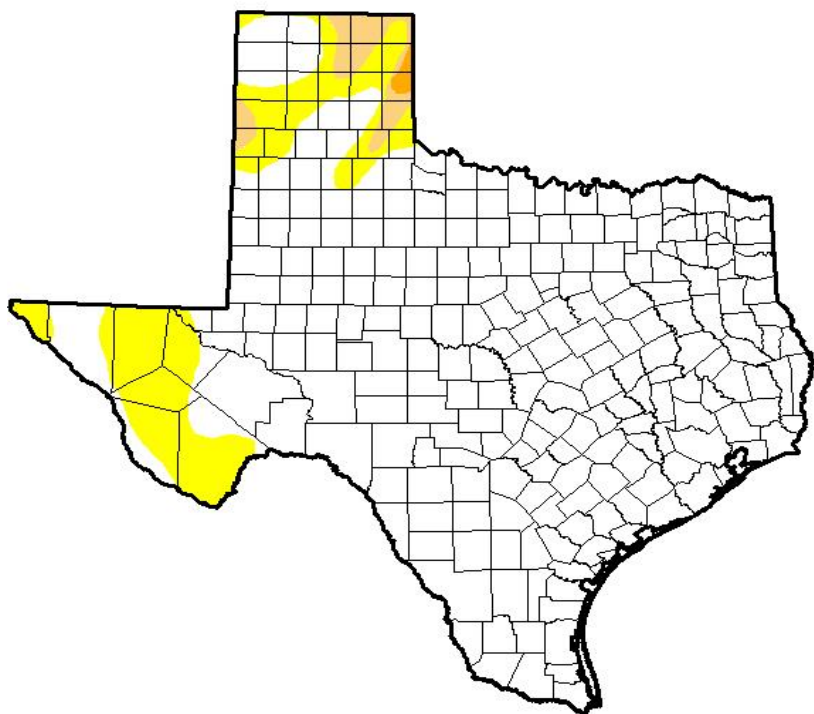


Seven Day Observed Regional Precipitation, May 1, 2016



Source: National Weather Service, www.nws.noaa.gov

Drought Monitor, Valid April 26, 2016



Drought Conditions (Percent Area)

	None	D0-D4	D1-D4	D2-D4	D3-D4	D4
Current	86.91	13.09	2.28	0.27	0.00	0.00
Last Week <i>4/19/2016</i>	80.58	19.42	4.59	0.35	0.00	0.00
3 Months Ago <i>1/26/2016</i>	98.05	1.95	0.00	0.00	0.00	0.00
Start of Calendar Year <i>12/31/2015</i>	95.48	4.52	0.00	0.00	0.00	0.00
Start of Water Year <i>9/29/2015</i>	34.51	65.49	38.32	17.55	6.27	0.00
One Year Ago <i>4/29/2015</i>	58.89	41.11	30.71	15.83	5.57	2.02

Intensity:

- D0 Abnormally Dry
- D1 Moderate Drought
- D2 Severe Drought
- D3 Extreme Drought
- D4 Exceptional Drought

The Drought Monitor focuses on broad-scale conditions. Local conditions may vary. See accompanying text summary for forecast statements.

Author:
Richard Heim
NCEI/NOAA



Source: National Drought Mitigation Center, a partnership with USDA, U.S. Department of Commerce/NOAA, <http://droughtmonitor.unl.edu>