



# Texas Crop Progress and Condition

Southern Plains Regional Field Office  
Post Office Box 70 Austin, Texas 78767  
(800) 626-3142 · FAX (855) 270-2725 · www.nass.usda.gov/tx

Issue: TX-CW1716

Weekly Summary for May 2 - May 8

Released: May 9, 2016

Dry and windy conditions prevailed across much of the state last week. Central Texas, the Coastal Bend, and East Texas received up to 2 inches of rain, while large portions of the Panhandle and South Texas received trace amounts of precipitation. Areas of Southeast Texas and the Upper Coast recorded up to 4 inches of rainfall. Later in the week, warmer temperatures began to move across the state.

**Small Grains:** Winter wheat continued to progress well throughout the state, with areas of the Northern High Plains reporting some hail damage to crops. Some producers in areas of South Texas were harvesting winter wheat for grain, while many areas were making plans for harvest. Oat harvest began in areas of the Blacklands and South Texas aided by drier weather conditions.

**Fruit, Vegetable and Specialty Crop:** Carrot harvest was very active last week in South Texas, while some producers began harvesting potatoes. Onion harvest continued in areas of the Lower Valley. Pecans reached full pollination stage in areas of the Edwards Plateau. In South Texas, sunflowers were blooming.

**Livestock, Range and Pasture:** In the Northern Low Plains and South Texas, livestock producers continued to report an abundance of available forage for livestock on native range and pastures. Pastureland in areas of the Blacklands and East Texas were saturated due to recent rainfall. Livestock, range, and pasture conditions were mostly good across the state.

## Crop Progress

Stage	Percent of Acreage			
	Current	Prev. Week	Prev. Year	5 Year Avg
<b>Corn</b>				
Planted	69	66	71	78
Emerged	57	47	63	63
Silked	5	N/A	2	3
<b>Cotton</b>				
Planted	18	13	15	21
Squaring	4	1	2	3
<b>Peanuts</b>				
Planted	24	12	7	19
<b>Rice</b>				
Planted	86	79	74	89
Emerged	80	76	69	80
<b>Sorghum</b>				
Planted	70	57	64	70
Headed	5	N/A	1	2
<b>Soybeans</b>				
Planted	60	32	57	65
Emerged	40	23	23	42
<b>Sunflowers</b>				
Planted	30	N/A	52	34
<b>Winter Wheat</b>				
Headed	83	73	87	77
<b>Oats</b>				
Headed	90	75	94	92

### Crop Condition

Crop	Percent of Acreage					Index <sup>1</sup>	
	Excellent	Good	Fair	Poor	Very Poor	2016	2015
Corn	8	74	16	1	1	--	--
Rice	9	40	40	5	6	--	--
Sorghum	7	49	38	5	1	--	--
Wheat	9	40	40	9	2	72	74
Oats	8	44	34	11	3	72	75
Range and Pasture	17	43	31	7	2	--	--

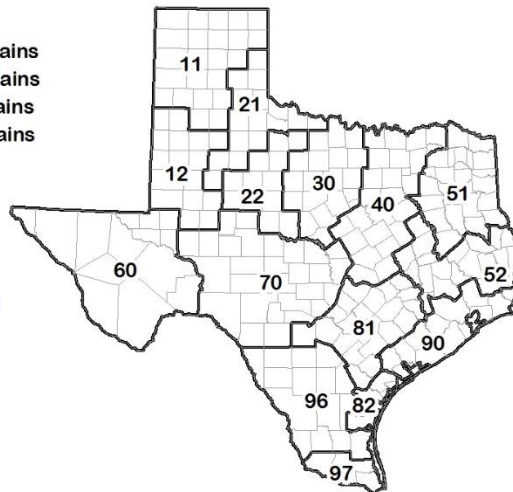
<sup>1</sup> The formula for the condition index is  $I = (5V + 25P + 60F + 90G + 110E)/100$  where I = crop condition index and V, P, F, G, E = percentage of crop rated very poor, poor, fair, good, excellent.

### Soil Moisture and Days Suitable by District

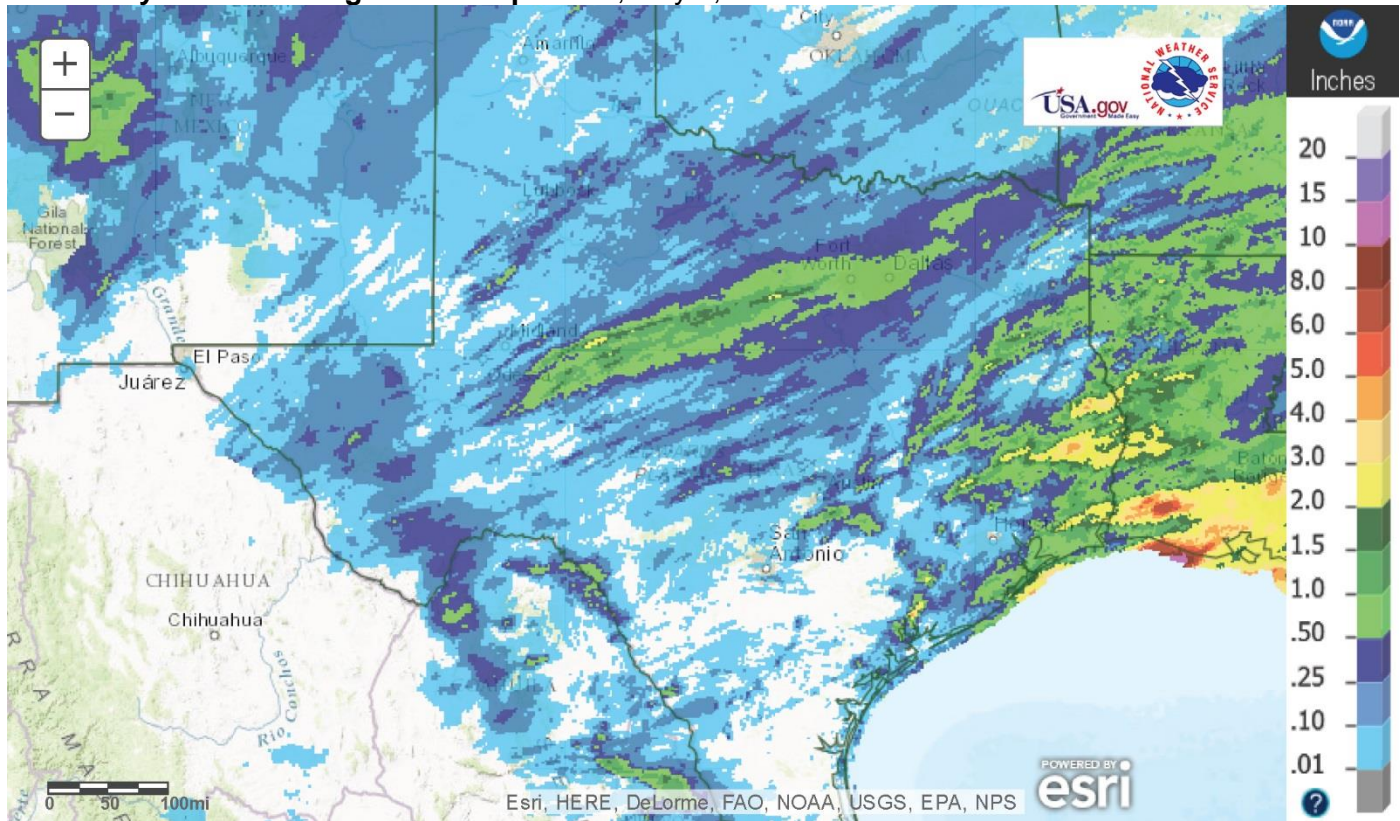
District	Topsoil Moisture Condition by District				Subsoil Moisture Condition by District				Days Suitable for Fieldwork
	Percentage of Acreage				Percentage of Acreage				
	Very Short	Short	Adequate	Surplus	Very Short	Short	Adequate	Surplus	
11	2	41	52	5	4	27	69	0	5.8
12	17	42	40	1	9	39	52	0	6.7
21	5	29	64	2	8	28	64	0	6.7
22	4	15	73	8	2	8	81	9	5.6
30	1	5	77	17	1	10	76	13	5.6
40	0	3	63	34	0	3	64	33	4.8
51	0	0	49	51	0	0	48	52	4.8
52	0	3	41	56	0	2	48	50	4.9
60	53	17	30	0	51	18	31	0	6.7
70	3	22	63	12	3	12	76	9	6.5
81	1	13	71	15	1	14	72	13	5.6
82	18	50	27	5	8	31	54	7	7.0
90	0	2	62	36	0	1	48	51	4.6
96	15	42	43	0	16	25	59	0	6.8
97	0	74	26	0	25	3	72	0	7.0
State	6	26	54	14	5	19	63	13	5.8

### Texas Agricultural Districts

- 11 Northern High Plains
- 12 Southern High Plains
- 21 Northern Low Plains
- 22 Southern Low Plains
- 30 Cross Timbers
- 40 Blacklands
- 51 North East
- 52 South East
- 60 Trans-Pecos
- 70 Edwards Plateau
- 81 South Central
- 82 Coaster Bend
- 90 Upper Coast
- 96 South
- 97 Lower Valley

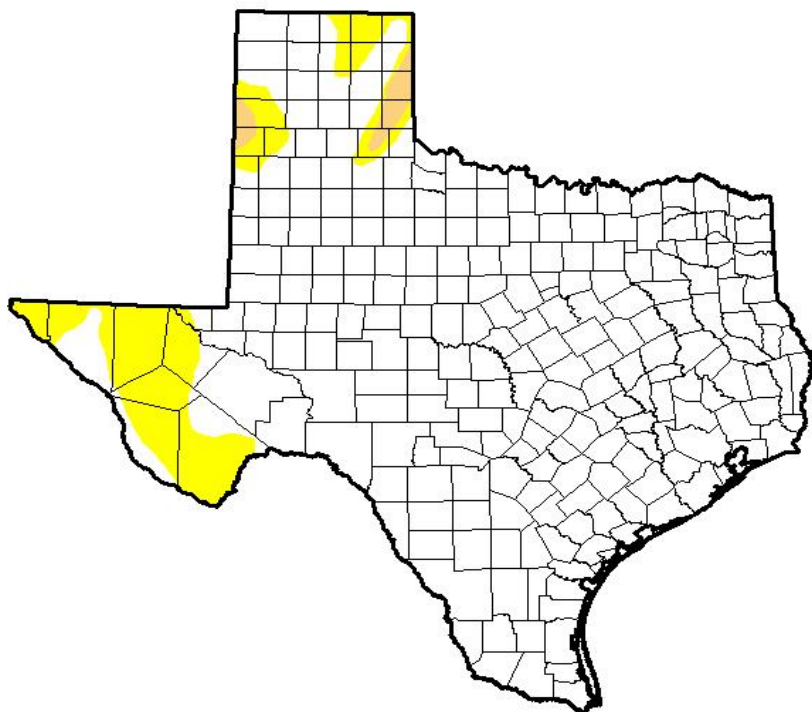


## Seven Day Observed Regional Precipitation, May 8, 2016



Source: National Weather Service, [www.nws.noaa.gov](http://www.nws.noaa.gov)

## Drought Monitor, Valid May 3, 2016



Drought Conditions (Percent Area)

	None	D0-D4	D1-D4	D2-D4	D3-D4	D4
<b>Current</b>	89.33	10.67	1.08	0.00	0.00	0.00
<b>Last Week</b> <i>4/26/2016</i>	86.91	13.09	2.28	0.27	0.00	0.00
<b>3 Months Ago</b> <i>2/2/2016</i>	97.66	2.34	0.00	0.00	0.00	0.00
<b>Start of Calendar Year</b> <i>12/29/2015</i>	95.48	4.52	0.00	0.00	0.00	0.00
<b>Start of Water Year</b> <i>9/29/2015</i>	34.51	65.49	38.32	17.55	6.27	0.00
<b>One Year Ago</b> <i>5/5/2015</i>	59.68	40.32	29.55	15.50	5.48	1.86

**Intensity:**

- D0 Abnormally Dry
- D1 Moderate Drought
- D2 Severe Drought
- D3 Extreme Drought
- D4 Exceptional Drought

*The Drought Monitor focuses on broad-scale conditions. Local conditions may vary. See accompanying text summary for forecast statements.*

**Author:**  
 Brian Fuchs  
 National Drought Mitigation Center



Source: National Drought Mitigation Center, a partnership with USDA, U.S. Department of Commerce/NOAA, <http://droughtmonitor.unl.edu>

## Texas Crop Progress and Condition (May 2016)

USDA, National Agricultural Statistics Service, Southern Plains Regional Field Office