



Texas Crop Progress and Condition

Southern Plains Regional Field Office
Post Office Box 70 Austin, Texas 78767
(800) 626-3142 · FAX (855) 270-2725 · www.nass.usda.gov/tx

Issue: TX-CW1816

Weekly Summary for May 9- May 15

Released: May 16, 2016

Thunderstorms moved across the central half of Texas last week, providing much-needed rainfall to many areas. Five or more inches were reported in the Cross Timbers. Areas of the Coastal Bend, the Lower Valley and South Texas reached upwards of three inches, while the Southern Plains received two or more inches of meaningful precipitation.

Small Grains: Winter wheat continued to progress well in many areas of the Southern High Plains, the Cross Timbers and the Edwards Plateau. Harvest was active in many areas of the Upper Coast. Oat harvest progressed in areas of the Blacklands, while baling continued in the Edwards Plateau.

Row Crops: Planting activities continued across the state. Corn in the Southern High Plains emerged, while corn conditions deteriorated in the Blacklands, due to precipitation. Sunflowers continued to be irrigated in South Texas. Cotton planting was active in many areas of the Northern and Southern Low Plains. Field preparations for peanuts continued in South Texas, while some areas were delayed. Sorghum reached the heading stage in many parts of the Upper Coast and the Coastal Bend.

Fruit, Vegetable and Specialty Crop: Squash harvest was active in North East Texas. Onion and watermelon harvest progressed in South Texas. Preparations continued in many fruit orchards across the state.

Livestock, Range and Pastures: In North East Texas, feral hog activity was observed. Livestock, range and pasture conditions were mostly good across the state.

Stage	Crop Progress			
	Percent of Acreage			
	Current	Prev. Week	Prev. Year	5 Year Avg
Corn				
Planted	78	69	74	86
Emerged	64	57	70	72
Silked	17	5	7	13
Cotton				
Planted	30	18	18	30
Squaring	5	4	3	5
Peanuts				
Planted	42	24	14	40
Rice				
Planted	93	86	79	92
Emerged	85	80	74	83
Sorghum				
Planted	71	70	69	76
Headed	21	5	6	13
Soybeans				
Planted	61	60	61	72
Emerged	44	40	38	57
Sunflowers				
Planted	33	30	57	42
Winter Wheat				
Headed	97	83	94	86
Harvested	2		1	3
Oats				
Headed	95	90	98	95
Harvested	4	N/A	1	5

Crop Condition

Crop	Percent of Acreage					Index ¹	
	Excellent	Good	Fair	Poor	Very Poor	2016	2015
Corn	9	63	25	2	1	82	81
Rice	9	40	39	4	8	71	75
Sorghum	7	54	33	5	1	77	65
Wheat	8	40	40	10	2	71	74
Oats	9	43	34	11	3	72	73
Range and Pasture	18	44	29	7	2	---	---

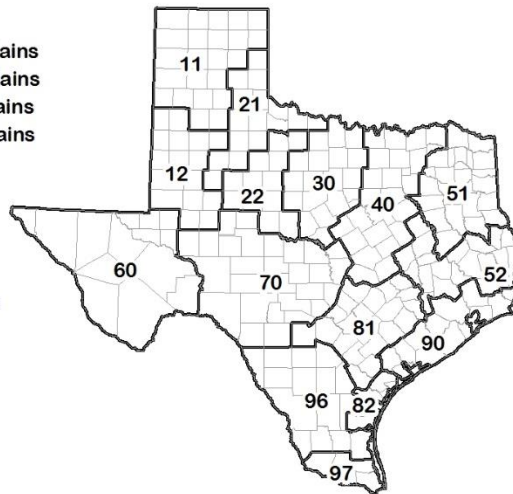
¹ The formula for the condition index is $I = (5V + 25P + 60F + 90G + 110E)/100$ where I = crop condition index and V, P, F, G, E = percentage of crop rated very poor, poor, fair, good, excellent.

Soil Moisture and Days Suitable by District

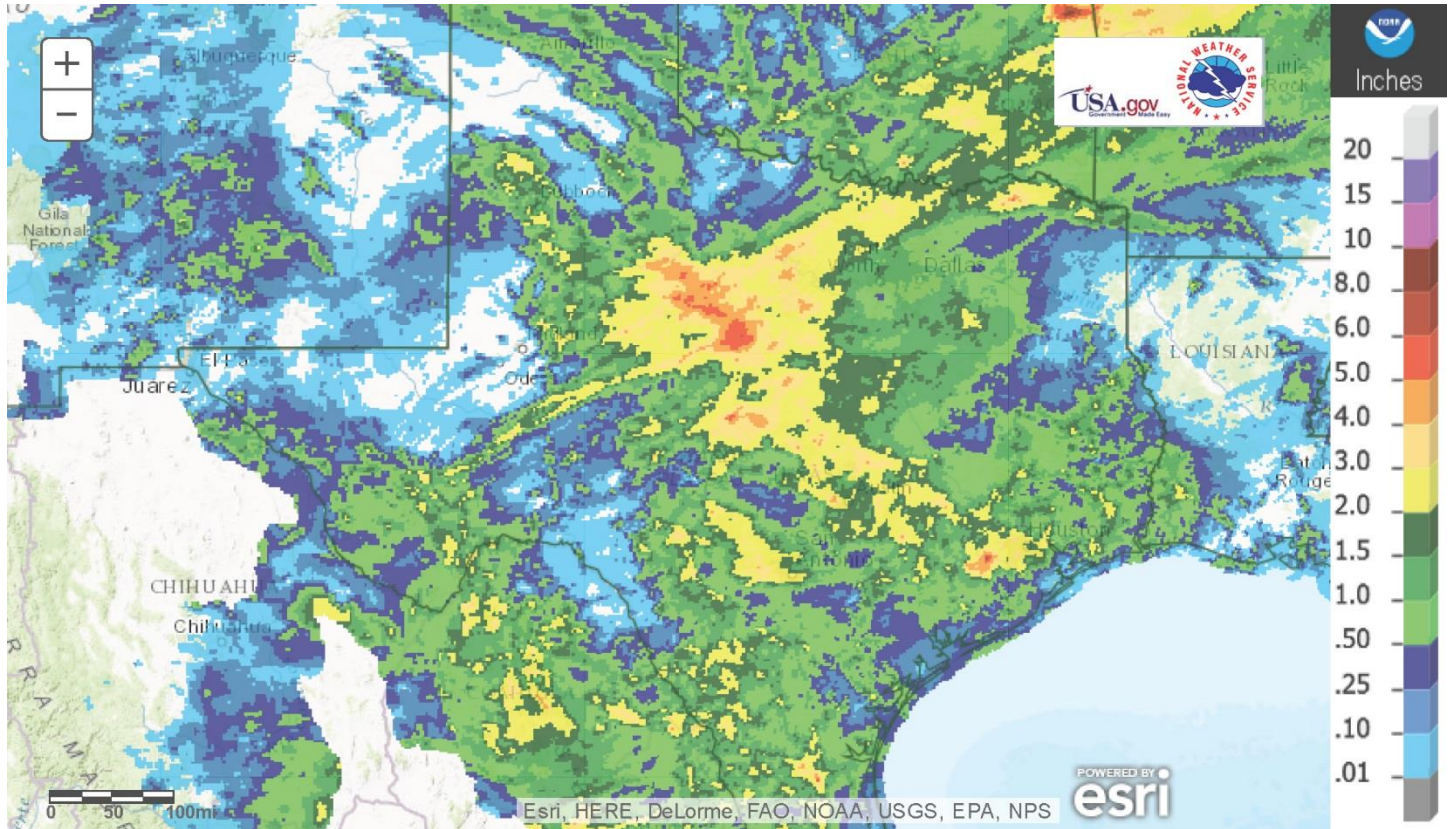
District	Topsoil Moisture Condition by District				Subsoil Moisture Condition by District				Days Suitable for Fieldwork
	Percentage of Acreage				Percentage of Acreage				
	Very Short	Short	Adequate	Surplus	Very Short	Short	Adequate	Surplus	
11	2	34	60	4	3	29	68	0	5.8
12	10	35	46	9	5	45	45	5	5.7
21	10	25	58	7	9	34	57	0	6.3
22	5	14	49	32	2	7	71	20	4.4
30	2	7	72	19	2	10	74	14	4.5
40	0	2	68	30	0	1	69	30	4.4
51	0	2	60	38	0	0	59	41	6.2
52	0	5	41	54	0	4	51	45	6.4
60	49	18	33	0	51	16	33	0	7.0
70	5	20	64	11	2	10	78	10	5.9
81	1	12	67	20	1	12	73	14	5.8
82	5	20	23	52	2	16	31	51	5.0
90	1	1	62	36	0	4	41	55	6.5
96	16	34	48	2	16	20	61	3	6.6
97	0	59	28	13	0	2	85	13	7.0
State	5	22	55	18	4	19	62	15	5.6

Texas Agricultural Districts

- 11 Northern High Plains
- 12 Southern High Plains
- 21 Northern Low Plains
- 22 Southern Low Plains
- 30 Cross Timbers
- 40 Blacklands
- 51 North East
- 52 South East
- 60 Trans-Pecos
- 70 Edwards Plateau
- 81 South Central
- 82 Coaster Bend
- 90 Upper Coast
- 96 South
- 97 Lower Valley

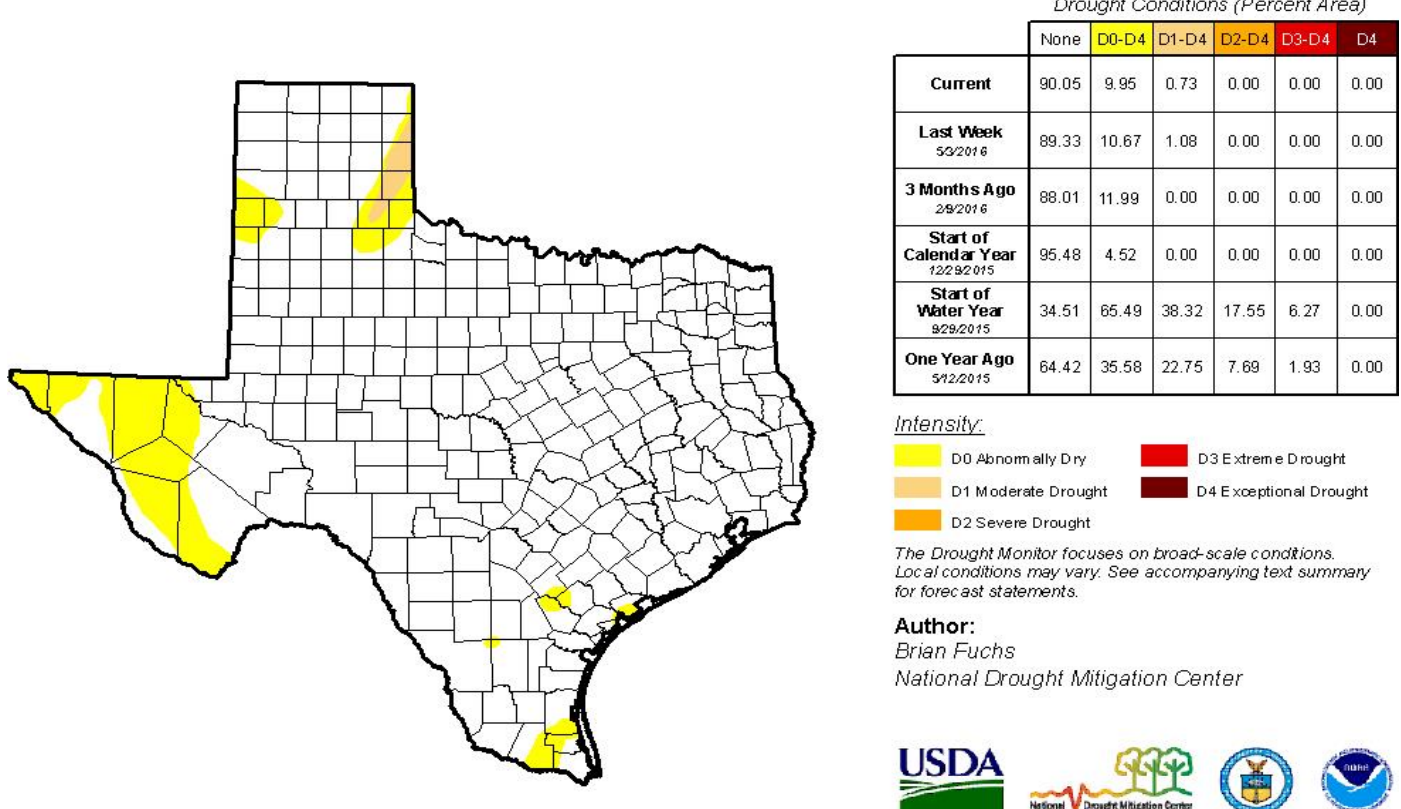


Seven Day Observed Regional Precipitation, May 15, 2016



Source: National Weather Service, www.nws.noaa.gov

Drought Monitor, Valid May 10, 2016



Source: National Drought Mitigation Center, a partnership with USDA, U.S. Department of Commerce/NOAA, <http://droughtmonitor.unl.edu>

Texas Crop Progress and Condition (May 2016)

USDA, National Agricultural Statistics Service, Southern Plains Regional Field Office