



Texas Crop Progress and Condition

Southern Plains Regional Field Office
Post Office Box 70 Austin, Texas 78767
(800) 626-3142 · FAX (855) 270-2725 · www.nass.usda.gov/tx

Issue: TX-CW1916

Weekly Summary for May 16 - May 22

Released: May 23, 2016

Many areas across the state experienced significant rainfall along with cool temperatures. Areas of South Central Texas, the Coastal Bend, and the Upper Coast received from 5 to 15 inches of precipitation, with many other areas receiving between 1 and 4 inches. Meanwhile, areas of the Trans Pecos and Southern High Plains received only trace amounts of precipitation.

Small Grains: Winter wheat and oats continued to progress; however, wet conditions across many areas of the state have delayed harvest. Crop damage due to hail was experienced in areas of Northern Low Plains and Edwards Plateau. Problems with rust were reported in some areas. Some producers in the Northern Plains began harvesting silage and baling dry land wheat acreage.

Row Crops: Cold, wet conditions have delayed cotton planting in areas of the Low Plains and the Edwards Plateau. Cotton planting was active in areas of the Cross Timbers, Blacklands, the Northeast and the Edwards Plateau. Early planted corn was active throughout the state. In areas of the Blacklands, sorghum fields benefitted from recent rainfall and peanut planting was delayed in areas of South Texas.

Fruit, Vegetable and Specialty Crops: Vegetable harvest was delayed due to wet fields. Onion crop loss was experienced in areas of the Lower Valley due to rainfall. Pecan orchards in areas of the Cross Timbers and South Texas were in good condition.

Livestock, Range and Pasture: Range and pasture continued to progress, providing adequate feed, as livestock conditions continued to improve across the state. Some pasture saturation was experienced in areas of the Edwards Plateau.

Crop Progress

Stage	Percent of Acreage			
	Current	Prev. Week	Prev. Year	5 Year Avg
Corn				
Planted	79	78	76	91
Emerged	65	64	74	79
Silked	21	17	13	23
Cotton				
Planted	31	30	26	41
Squaring	6	5	4	6
Peanuts				
Planted	50	42	28	59
Rice				
Emerged	92	85	79	87
Sorghum				
Planted	72	71	72	78
Headed	24	21	13	24
Soybeans				
Planted	65	61	67	79
Emerged	55	44	49	68
Sunflowers				
Planted	34	33	60	52
Winter Wheat				
Harvested	6	2	3	10
Oats				
Harvested	15	4	7	20

Crop Condition

Crop	Percent of Acreage					Index ¹	
	Excellent	Good	Fair	Poor	Very Poor	2016	2015
Corn	12	57	28	2	1	82	82
Rice	9	47	34	5	5	74	75
Sorghum	14	47	33	5	1	79	71
Wheat	8	39	41	10	2	71	74
Oats	10	44	33	10	3	73	65
Range and Pasture	19	46	26	7	2	--	--

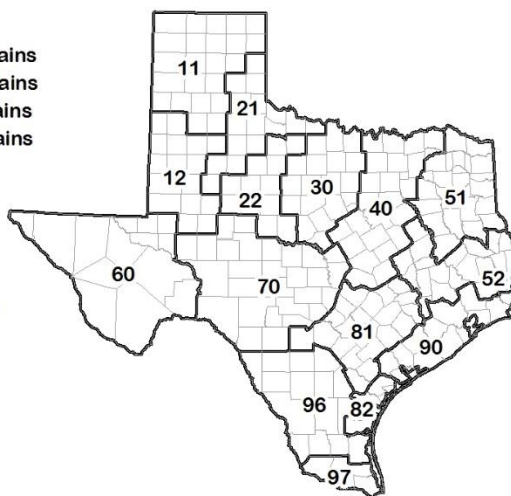
¹ The formula for the condition index is $I = (5V + 25P + 60F + 90G + 110E)/100$ where I = crop condition index and V, P, F, G, E = percentage of crop rated very poor, poor, fair, good, excellent.

Soil Moisture and Days Suitable by District

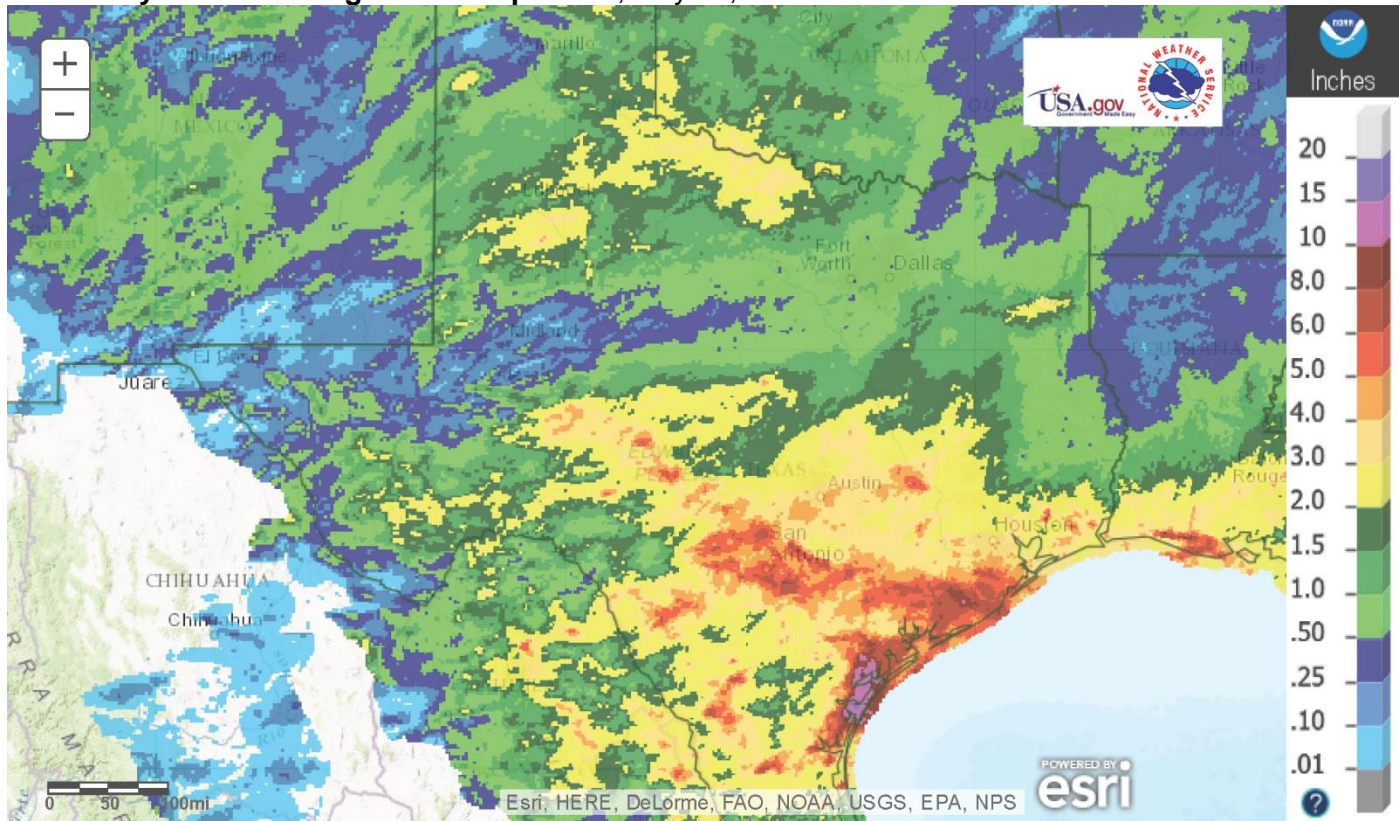
District	Topsoil Moisture Condition by District				Subsoil Moisture Condition by District				Days Suitable for Fieldwork
	Percentage of Acreage				Percentage of Acreage				
	Very Short	Short	Adequate	Surplus	Very Short	Short	Adequate	Surplus	
11	2	34	60	4	3	29	68	0	6.0
12	10	35	46	9	5	45	45	5	6.0
21	10	25	58	7	9	34	57	0	6.0
22	5	14	49	32	2	7	71	20	4.0
30	2	7	72	19	2	10	74	14	5.0
40	0	2	68	30	0	1	69	30	4.0
51	0	2	60	38	0	0	59	41	6.0
52	0	5	41	54	0	4	51	45	6.0
60	49	18	33	0	51	16	33	0	7.0
70	5	20	64	11	2	10	78	10	6.0
81	1	12	67	20	1	12	73	14	6.0
82	5	20	23	52	2	16	31	51	5.0
90	1	1	62	36	0	4	41	55	6.0
96	16	34	48	2	16	20	61	3	6.0
97	0	59	28	13	0	2	85	13	7.0
State	5	22	55	18	4	19	62	15	6.0

Texas Agricultural Districts

- 11 Northern High Plains
- 12 Southern High Plains
- 21 Northern Low Plains
- 22 Southern Low Plains
- 30 Cross Timbers
- 40 Blacklands
- 51 North East
- 52 South East
- 60 Trans-Pecos
- 70 Edwards Plateau
- 81 South Central
- 82 Coaster Bend
- 90 Upper Coast
- 96 South
- 97 Lower Valley

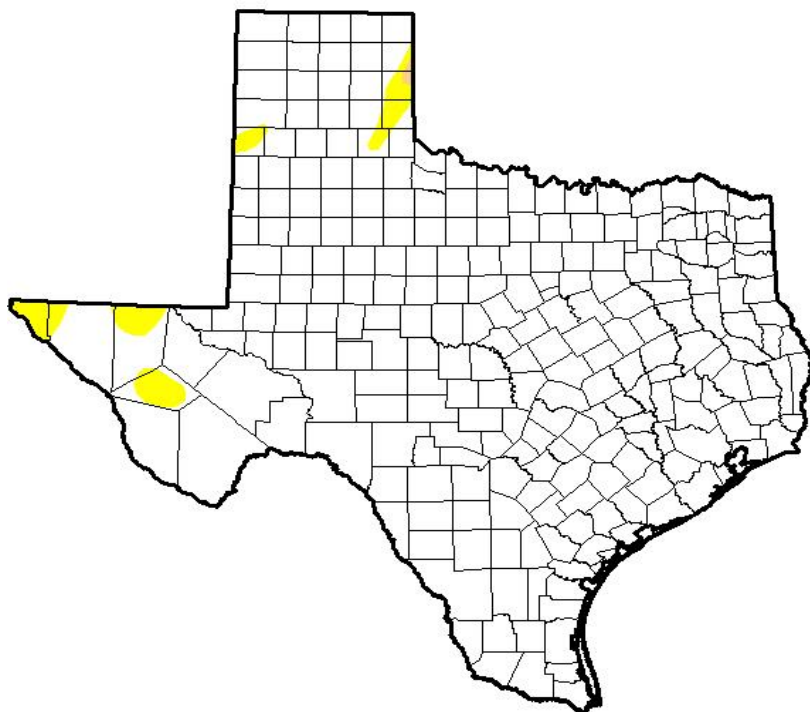


Seven Day Observed Regional Precipitation, May 22, 2016



Source: National Weather Service, www.nws.noaa.gov

Drought Monitor, Valid May 17, 2016



Drought Conditions (Percent Area)

	None	D0-D4	D1-D4	D2-D4	D3-D4	D4
Current	97.40	2.60	0.09	0.00	0.00	0.00
Last Week 5/10/2016	90.05	9.95	0.73	0.00	0.00	0.00
3 Months Ago 2/16/2016	55.16	44.84	3.57	0.00	0.00	0.00
Start of Calendar Year 12/29/2015	95.48	4.52	0.00	0.00	0.00	0.00
Start of Water Year 8/29/2015	34.51	65.49	38.32	17.55	6.27	0.00
One Year Ago 5/19/2015	70.11	29.89	15.37	3.29	0.00	0.00

Intensity:

- D0 Abnormally Dry
- D1 Moderate Drought
- D2 Severe Drought
- D3 Extreme Drought
- D4 Exceptional Drought

The Drought Monitor focuses on broad-scale conditions. Local conditions may vary. See accompanying text summary for forecast statements.

Author:

David Simeral
Western Regional Climate Center



Source: National Drought Mitigation Center, a partnership with USDA, U.S. Department of Commerce/NOAA, <http://droughtmonitor.unl.edu>

Texas Crop Progress and Condition (May 2016)

USDA, National Agricultural Statistics Service, Southern Plains Regional Field Office