



# Texas Crop Progress and Condition

Southern Plains Regional Field Office  
Post Office Box 70 Austin, Texas 78767  
(800) 626-3142 · FAX (855) 270-2725 · www.nass.usda.gov/tx

Issue: TX-CW2016

Weekly Summary for May 23 - May 29

Released: May 31, 2016

Thunderstorms moved across much of the state last week, with many areas receiving measurable rainfall totals from trace amounts to upwards of 15 inches. Areas of South Central and the Upper Coast received between 10 and 15 inches of precipitation. Southeast Texas, the Edwards Plateau, and the Cross Timbers received from 5 to 8 inches with many other areas receiving between 1 and 4 inches.

**Small Grains:** Wet conditions slowed small grains harvest in areas of the Blacklands, the Edwards Plateau, and South Texas. Winter wheat harvest was underway in the Northern High Plains, Northern Low Plains, and Southern Low Plains. Some producers in areas of the Northern Plains experienced hail damage to wheat fields.

**Row Crops:** Corn, cotton, and sorghum planting progressed well in areas of the Northern High Plains and neared completion in South Texas. Row crops in areas of the Southern High Plains experienced significant hail damage. Peanuts were pegging in areas of the Northern High Plains and South Texas. Soybeans were progressing well in the Blacklands.

**Fruits, Vegetable, and Specialty Crops:** Vegetables producers in areas of the Cross Timbers were having issues with flooded fields. Field preparation was underway for fall vegetable planting in areas of Northeast Texas. Pecans progressed well in the Trans-Pecos and South Texas. In the Blacklands, hot temperatures halted fruit set of tomatoes.

**Livestock, Range and Pasture:** Range and pasture were in good condition, providing adequate feed, as livestock conditions continued to improve across the state. Hot and dry conditions continued to decrease range and pasture in some areas of South Texas.

## Crop Progress

Stage	Percent of Acreage			
	Current	Prev. Week	Prev. Year	5 Year Avg
<b>Corn</b>				
Planted	93	79	81	94
Emerged	78	65	77	86
Silked	28	21	21	32
<b>Cotton</b>				
Planted	44	31	41	59
Squaring	7	6	5	7
<b>Peanuts</b>				
Planted	78	50	63	76
<b>Rice</b>				
Planted	99	98	85	96
Emerged	97	92	82	90
<b>Sorghum</b>				
Planted	73	72	73	80
Headed	28	24	20	36
<b>Soybeans</b>				
Planted	68	65	70	86
Emerged	60	55	52	74
<b>Sunflowers</b>				
Planted	41	34	66	66
<b>Winter Wheat</b>				
Harvested	11	6	8	17
<b>Oats</b>				
Harvested	17	15	14	39

### Crop Condition

Crop	Percent of Acreage					Index <sup>1</sup>	
	Excellent	Good	Fair	Poor	Very Poor	2016	2015
Corn	11	61	25	2	1	83	82
Rice	9	47	34	5	5	74	75
Sorghum	14	49	32	4	1	80	73
Wheat	7	40	41	10	2	71	71
Oats	8	41	37	11	3	71	59
Range and Pasture	21	46	25	6	2	--	--

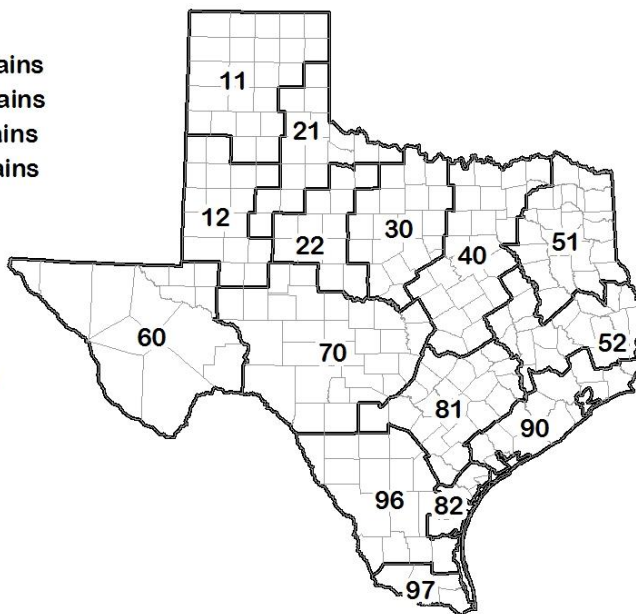
<sup>1</sup> The formula for the condition index is  $I = (5V + 25P + 60F + 90G + 110E)/100$  where I = crop condition index and V, P, F, G, E = percentage of crop rated very poor, poor, fair, good, excellent.

### Soil Moisture and Days Suitable by District

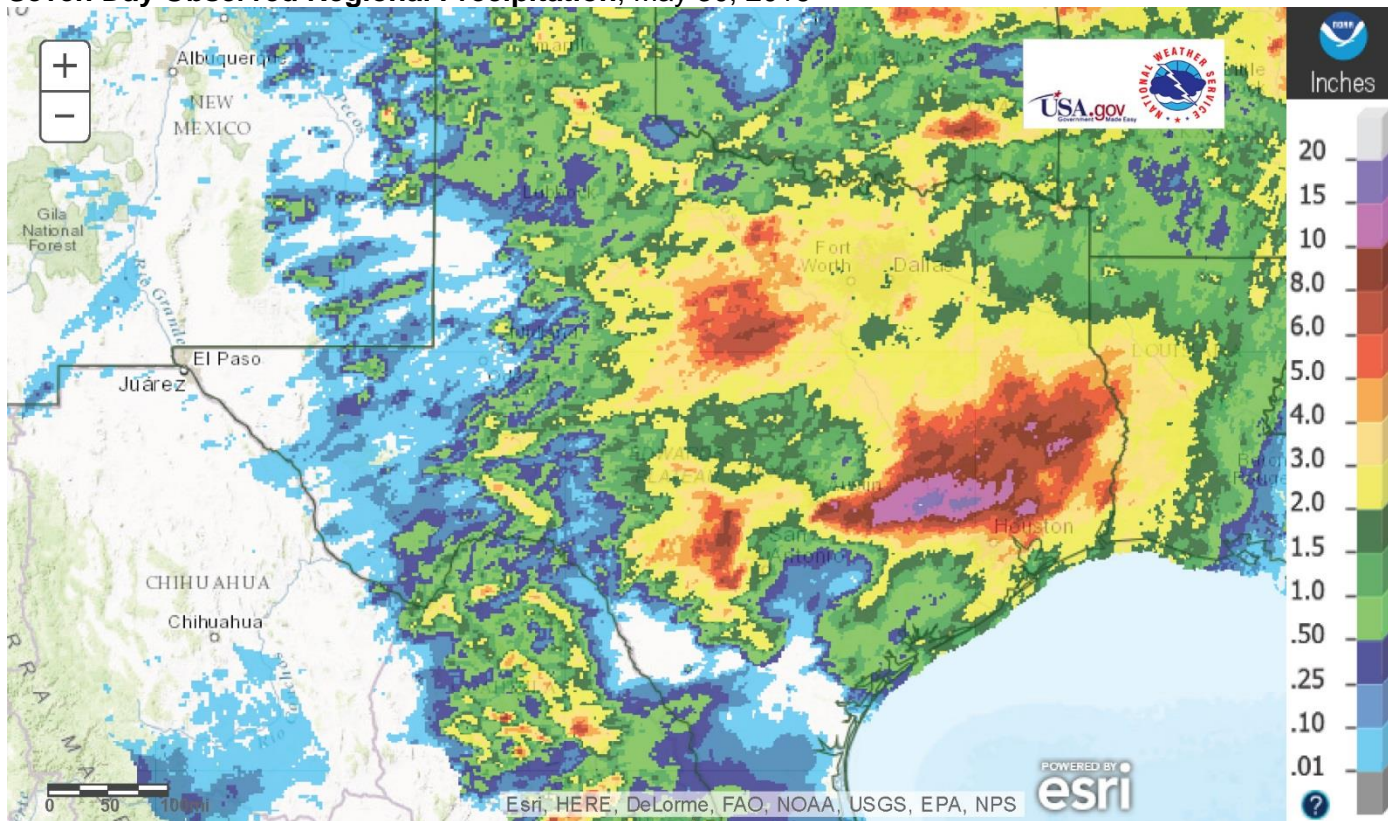
District	Topsoil Moisture Condition by District				Subsoil Moisture Condition by District				Days Suitable for Fieldwork
	Percentage of Acreage				Percentage of Acreage				
	Very Short	Short	Adequate	Surplus	Very Short	Short	Adequate	Surplus	
11	0	34	57	9	2	27	71	0	6.0
12	9	34	44	13	5	41	49	5	6.1
21	3	9	73	15	5	11	79	5	4.1
22	0	4	73	23	2	4	68	26	3.3
30	1	1	61	37	1	2	71	26	4.0
40	0	0	38	62	0	0	39	61	2.5
51	0	2	61	37	0	1	61	38	5.2
52	0	1	35	64	0	1	40	59	3.5
60	48	20	32	0	49	16	35	0	6.6
70	3	8	42	47	1	8	68	23	4.7
81	1	5	60	34	1	5	69	25	4.2
82	0	1	21	78	0	0	24	76	0.0
90	0	1	22	77	0	3	41	56	1.2
96	4	11	70	15	4	12	80	4	5.5
97	0	54	46	0	0	2	98	0	7.0
State	3	17	51	29	3	15	60	22	4.6

### Texas Agricultural Districts

- 11 Northern High Plains
- 12 Southern High Plains
- 21 Northern Low Plains
- 22 Southern Low Plains
- 30 Cross Timbers
- 40 Blacklands
- 51 North East
- 52 South East
- 60 Trans-Pecos
- 70 Edwards Plateau
- 81 South Central
- 82 Coaster Bend
- 90 Upper Coast
- 96 South
- 97 Lower Valley

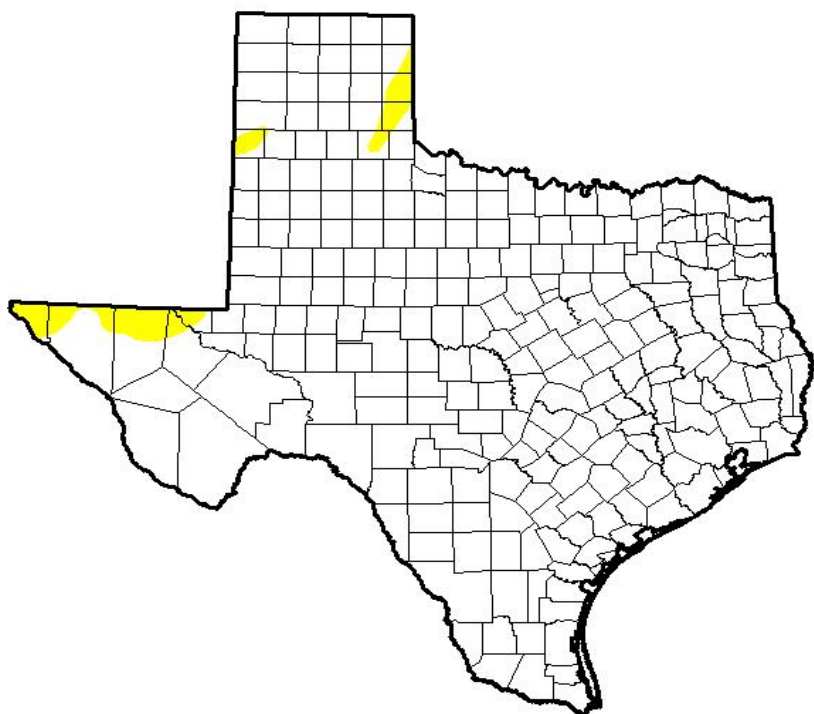


## Seven Day Observed Regional Precipitation, May 30, 2016



Source: National Weather Service, [www.nws.noaa.gov](http://www.nws.noaa.gov)

## Drought Monitor, Valid May 24, 2016



Drought Conditions (Percent Area)

	None	D0-D4	D1-D4	D2-D4	D3-D4	D4
<b>Current</b>	97.30	2.70	0.00	0.00	0.00	0.00
<b>Last Week</b> 5/17/2016	97.40	2.60	0.09	0.00	0.00	0.00
<b>3 Months Ago</b> 2/23/2016	77.61	22.39	0.79	0.00	0.00	0.00
<b>Start of Calendar Year</b> 12/29/2015	95.48	4.52	0.00	0.00	0.00	0.00
<b>Start of Water Year</b> 8/29/2015	34.51	65.49	38.32	17.55	6.27	0.00
<b>One Year Ago</b> 5/26/2015	82.11	17.89	5.40	0.00	0.00	0.00

*Intensity:*

- D0 Abnormally Dry
- D1 Moderate Drought
- D2 Severe Drought
- D3 Extreme Drought
- D4 Exceptional Drought

*The Drought Monitor focuses on broad-scale conditions. Local conditions may vary. See accompanying text summary for forecast statements.*

**Author:**

David Simeral  
Western Regional Climate Center



Source: National Drought Mitigation Center, a partnership with USDA, U.S. Department of Commerce/NOAA, <http://droughtmonitor.unl.edu>