



# Texas Crop Progress and Condition

Southern Plains Regional Field Office  
Post Office Box 70 Austin, Texas 78767  
(800) 626-3142 · FAX (855) 270-2725 · www.nass.usda.gov/tx

Issue: TX-CW2216

Weekly Summary for June 6 - June 12

Released: June 13, 2016

Mostly scattered showers were experienced across the state last week. Areas of the Southern Plains, South Texas, the Upper Coast, and the Coastal Bend received upwards of 3 inches of rainfall, while the Trans-Pecos and Edwards Plateau saw between 0.5 and 2 inches. The rest of the state received little to no measurable precipitation.

**Small Grains:** Wheat and oat harvest was active across most of the state last week. Late harvesting continued where conditions allowed producers to return to the fields. Haying and silage harvest of small grains resumed in many areas due to dry weather and warmer temperatures. Earlier freeze damage and rust issues have affected some winter wheat fields in the Northern Low Plains, the Cross Timbers and the Upper Coast.

**Row Crops:** Row crops across the state continued to progress as planting resumed in many areas. A number of cotton fields were being replanted due to previous hail damage. Corn was in good condition in areas of the Blacklands, South Central and South Texas, while corn in Northeast Texas displayed signs of stress due to standing water. Sorghum in areas of the Southern High Plains experienced fall armyworm infestation and preparation for harvest began in the Lower Valley. Peanut planting continued in South Texas.

**Livestock, Range and Pasture:** Abundant moisture and warm sunny weather aided range and pasture development. Livestock were in good condition, while flies and mosquitoes continued to irritate cattle in areas of the state. Stock tanks and area reservoirs were mostly full.

## Crop Progress

Stage	Percent of Acreage			
	Current	Prev. Week	Prev. Year	5 Year Avg
<b>Corn</b>				
Emerged	93	90	92	96
Silked	38	35	40	49
<b>Cotton</b>				
Planted	86	65	84	91
Squaring	10	8	10	11
Setting Bolls	1		1	5
<b>Peanuts</b>				
Planted	96	86	92	94
<b>Rice</b>				
Headed	9	N/A	1	3
<b>Sorghum</b>				
Planted	87	82	83	89
Headed	37	35	34	49
Coloring	17	14	13	24
<b>Soybeans</b>				
Planted	88	84	79	93
Emerged	85	76	70	90
Blooming	14	2	10	21
<b>Sunflowers</b>				
Planted	80	65	89	84
<b>Winter Wheat</b>				
Harvested	35	16	39	43
<b>Oats</b>				
Harvested	40	20	62	70

### Crop Condition

Crop	Percent of Acreage					Index <sup>1</sup>	
	Excellent	Good	Fair	Poor	Very Poor	2016	2015
Corn	14	60	22	3	1	83	82
Cotton	7	41	42	9	1	72	73
Peanuts	4	57	39	--	--	79	73
Rice	9	47	34	5	5	74	75
Sorghum	15	52	26	6	1	80	78
Soybeans	6	54	35	4	1	77	72
Wheat	6	38	43	10	3	69	68
Oats	6	36	42	13	3	68	58
Range and Pasture	22	49	22	5	2	--	--

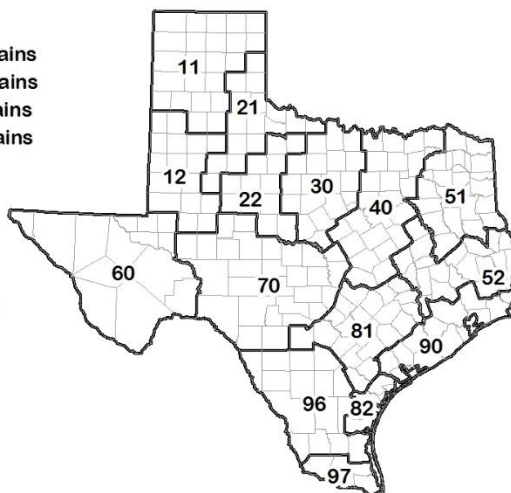
<sup>1</sup> The formula for the condition index is  $I = (5V + 25P + 60F + 90G + 110E)/100$  where I = crop condition index and V, P, F, G, E = percentage of crop rated very poor, poor, fair, good, excellent.

### Soil Moisture and Days Suitable by District

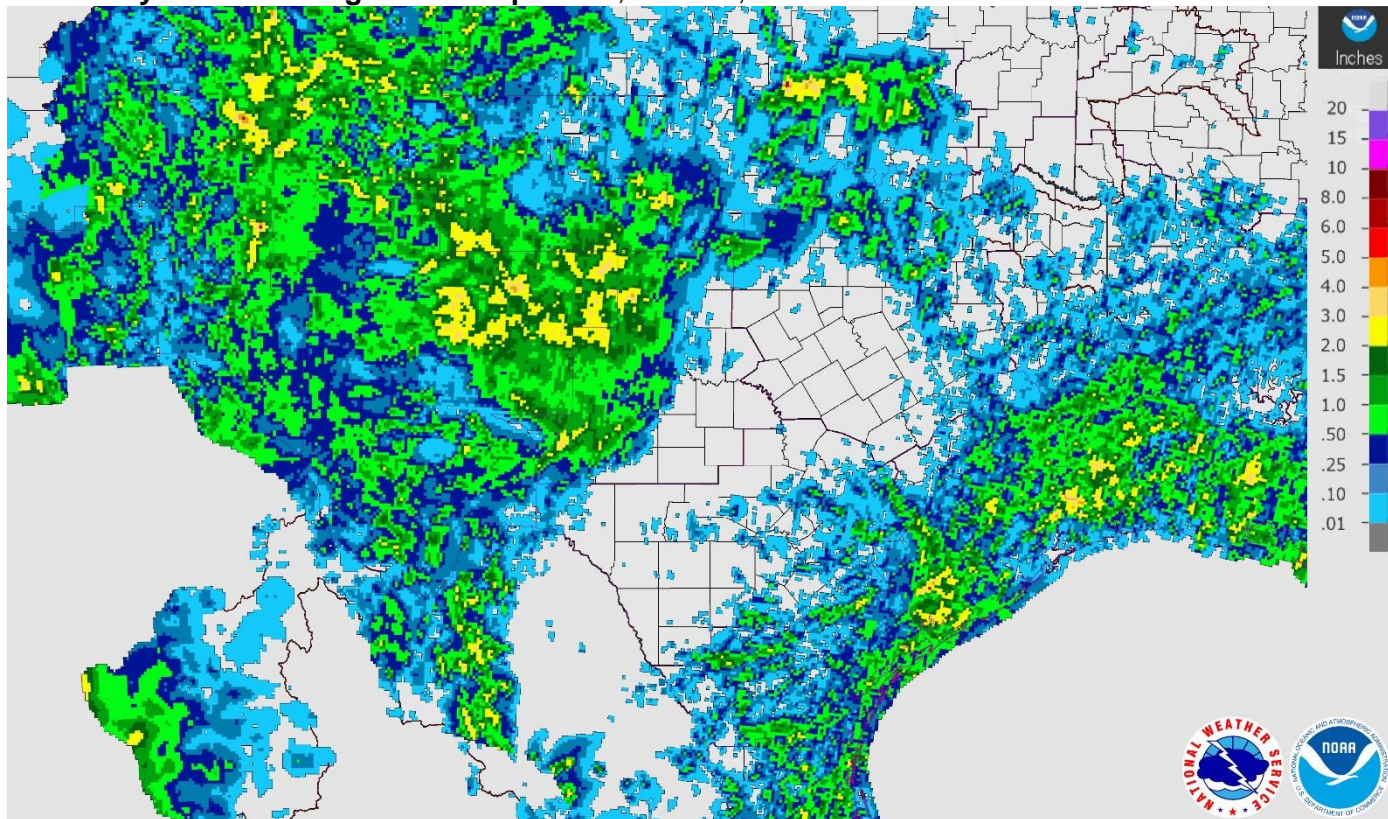
District	Topsoil Moisture Condition by District				Subsoil Moisture Condition by District				Days Suitable for Fieldwork
	Percentage of Acreage				Percentage of Acreage				
	Very Short	Short	Adequate	Surplus	Very Short	Short	Adequate	Surplus	
11	1	32	60	7	3	18	79	0	6.6
12	3	13	76	8	2	32	62	4	5.8
21	3	9	72	16	5	10	77	8	5.7
22	0	3	64	33	2	4	53	41	4.8
30	0	0	71	29	0	0	75	25	4.4
40	0	1	52	47	0	1	44	55	5.2
51	0	0	58	42	0	0	57	43	6.3
52	0	4	45	51	0	2	48	50	4.7
60	44	22	34	0	43	18	39	0	7.0
70	4	8	42	46	1	10	49	40	5.3
81	1	7	59	33	1	9	68	22	5.2
82	0	0	17	83	0	0	18	82	3.0
90	0	1	11	88	0	2	18	80	1.5
96	0	14	81	5	0	10	84	6	6.2
97	0	48	52	0	0	2	98	0	7.0
State	2	13	58	27	2	12	61	25	5.4

### Texas Agricultural Districts

- 11 Northern High Plains
- 12 Southern High Plains
- 21 Northern Low Plains
- 22 Southern Low Plains
- 30 Cross Timbers
- 40 Blacklands
- 51 North East
- 52 South East
- 60 Trans-Pecos
- 70 Edwards Plateau
- 81 South Central
- 82 Coaster Bend
- 90 Upper Coast
- 96 South
- 97 Lower Valley

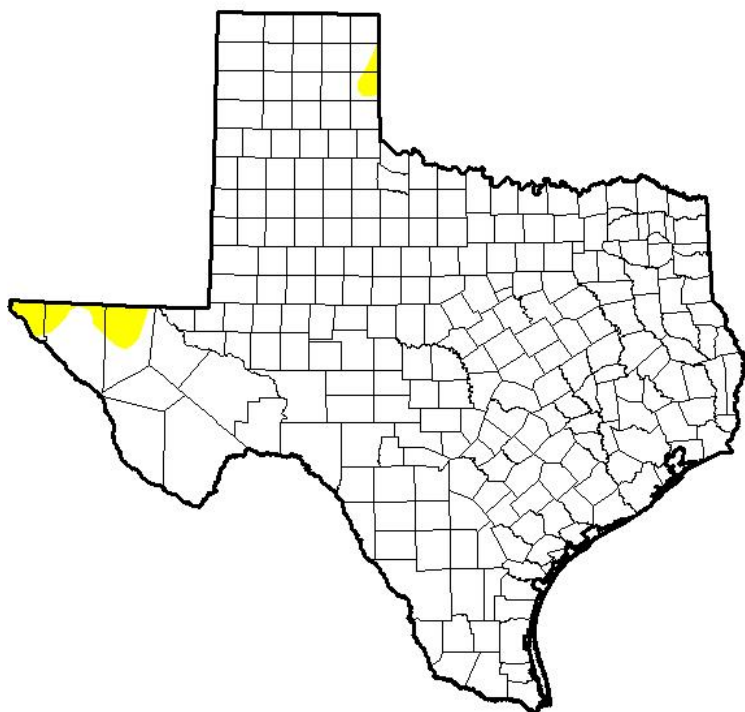


## Seven Day Observed Regional Precipitation, June 12, 2016



Source: National Weather Service, [www.nws.noaa.gov](http://www.nws.noaa.gov)

## Drought Monitor, Valid June 7, 2016



Drought Conditions (Percent Area)

	None	D0-D4	D1-D4	D2-D4	D3-D4	D4
<b>Current</b>	98.31	1.69	0.00	0.00	0.00	0.00
<b>Last Week</b> <i>5/31/2016</i>	98.62	1.38	0.00	0.00	0.00	0.00
<b>3 Months Ago</b> <i>3/8/2016</i>	69.32	30.68	1.47	0.00	0.00	0.00
<b>Start of Calendar Year</b> <i>12/29/2015</i>	95.48	4.52	0.00	0.00	0.00	0.00
<b>Start of Water Year</b> <i>9/29/2015</i>	34.51	65.49	38.32	17.55	6.27	0.00
<b>One Year Ago</b> <i>6/8/2015</i>	92.07	7.93	0.53	0.00	0.00	0.00

*Intensity:*

- D0 Abnormally Dry
- D1 Moderate Drought
- D2 Severe Drought
- D3 Extreme Drought
- D4 Exceptional Drought

*The Drought Monitor focuses on broad-scale conditions. Local conditions may vary. See accompanying text summary for forecast statements.*

**Author:**  
Deborah Bathke  
National Drought Mitigation Center



Source: National Drought Mitigation Center, a partnership with USDA, U.S. Department of Commerce/NOAA, <http://droughtmonitor.unl.edu>