



# Texas Crop Progress and Condition

Southern Plains Regional Field Office  
Post Office Box 70 Austin, Texas 78767  
(800) 626-3142 · FAX (855) 270-2725 · www.nass.usda.gov/tx

Issue: TX-CW2316

Weekly Summary for June 13 - June 19

Released: June 20, 2016

Areas of the Cross Timbers and the Blacklands received upwards of 8 inches of rainfall. The High Plains and South Central experienced from no precipitation in a few areas to upwards of 6 inches in some areas. The Low Plains, the Trans-Pecos, and East Texas received trace amounts to upwards of 2 inches. Hail storms were experienced in Northern and Southern High Plains. Many areas of Central and West Texas experienced hot, windy conditions with little or no precipitation.

**Small Grains:** Winter wheat harvest was in full swing across most of the state. Harvest was temporarily halted in some locations due to rain and wet fields. In the Northern High Plains, winter wheat harvest was in beginning stages. Harvest and grazing of wheat continued in the Southern Low Plains.

**Rows Crops:** Corn continued to progress favorably in many areas of the Blacklands and South Texas, while standing water caused some corn fields to yellow in Northeast Texas. In areas of South Texas, cotton was beginning the squaring stage. Peanuts made good progress in the Southern High Plains. In South Texas, sorghum continued to mature at a rapid pace and preparation for harvest continued in the Lower Valley. Some producers began to see damage on sorghum from the sugarcane aphid in areas of the Blacklands and the Coastal Bend.

**Fruit, Vegetable, and Specialty Crops:** Some disease problems were reported for fruits and vegetables in North East Texas. In South Texas, pecans made good progress from recent weather, while potato harvest was in full swing. Watermelons and cantaloupes developed well, and vegetable crops were being harvested.

**Livestock, Range and Pasture:** Range and pasture continued to benefit from adequate moisture. Livestock were generally in good condition, however, in areas of the Northern High Plains and Northeast Texas barn and horn flies populations were increasing. Stock tanks and ponds were at capacity in the Edwards Plateau and the Upper Coast.

## Crop Progress

Stage	Percent of Acreage			
	Current Week	Previous Week	Previous Year	5 Year Average
<b>Corn</b>				
Emerged	94	93	95	98
Silked	41	38	46	55
Dough	13	N/A	11	17
Dented	7	N/A	3	6
<b>Cotton</b>				
Planted	94	86	90	96
Squaring	15	10	15	15
Setting Bolls	4	1	3	6
<b>Peanuts</b>				
Pegging	7	N/A	9	2
<b>Rice</b>				
Headed	19	9	2	10
<b>Sorghum</b>				
Planted	90	87	89	92
Headed	40	37	42	54
Coloring	27	17	18	33
Mature	9	N/A	2	8
<b>Soybeans</b>				
Planted	89	88	83	95
Emerged	86	85	75	93
Blooming	16	14	18	28
<b>Sunflowers</b>				
Planted	85	80	90	87
<b>Winter Wheat</b>				
Harvested	55	35	59	63
<b>Oats</b>				
Harvested	70	40	82	83

### Crop Condition

Crop	Percent of Acreage					Index <sup>1</sup>	
	Excellent	Good	Fair	Poor	Very Poor	2016	2015
Corn	16	58	21	4	1	83	80
Cotton	7	41	43	8	1	72	73
Peanuts	3	64	33	--	--	81	78
Rice	9	47	34	5	5	74	73
Sorghum	17	49	28	5	1	81	79
Soybeans	8	52	35	4	1	78	74
Wheat	7	36	45	10	2	70	68
Oats	6	36	42	13	3	68	58
Range and Pasture	21	49	23	5	2	--	--

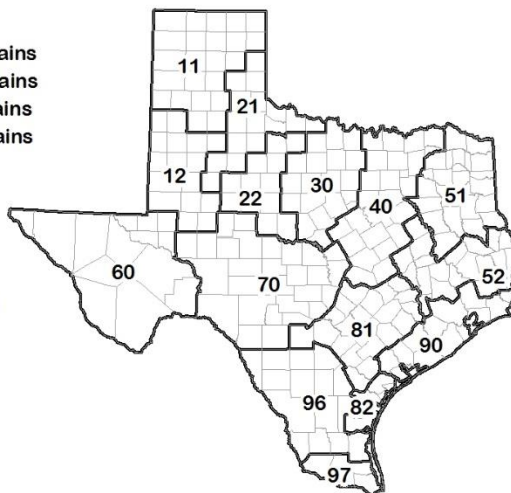
<sup>1</sup> The formula for the condition index is  $I = (5V + 25P + 60F + 90G + 110E)/100$  where I = crop condition index and V, P, F, G, E = percentage of crop rated very poor, poor, fair, good, excellent.

### Soil Moisture and Days Suitable by District

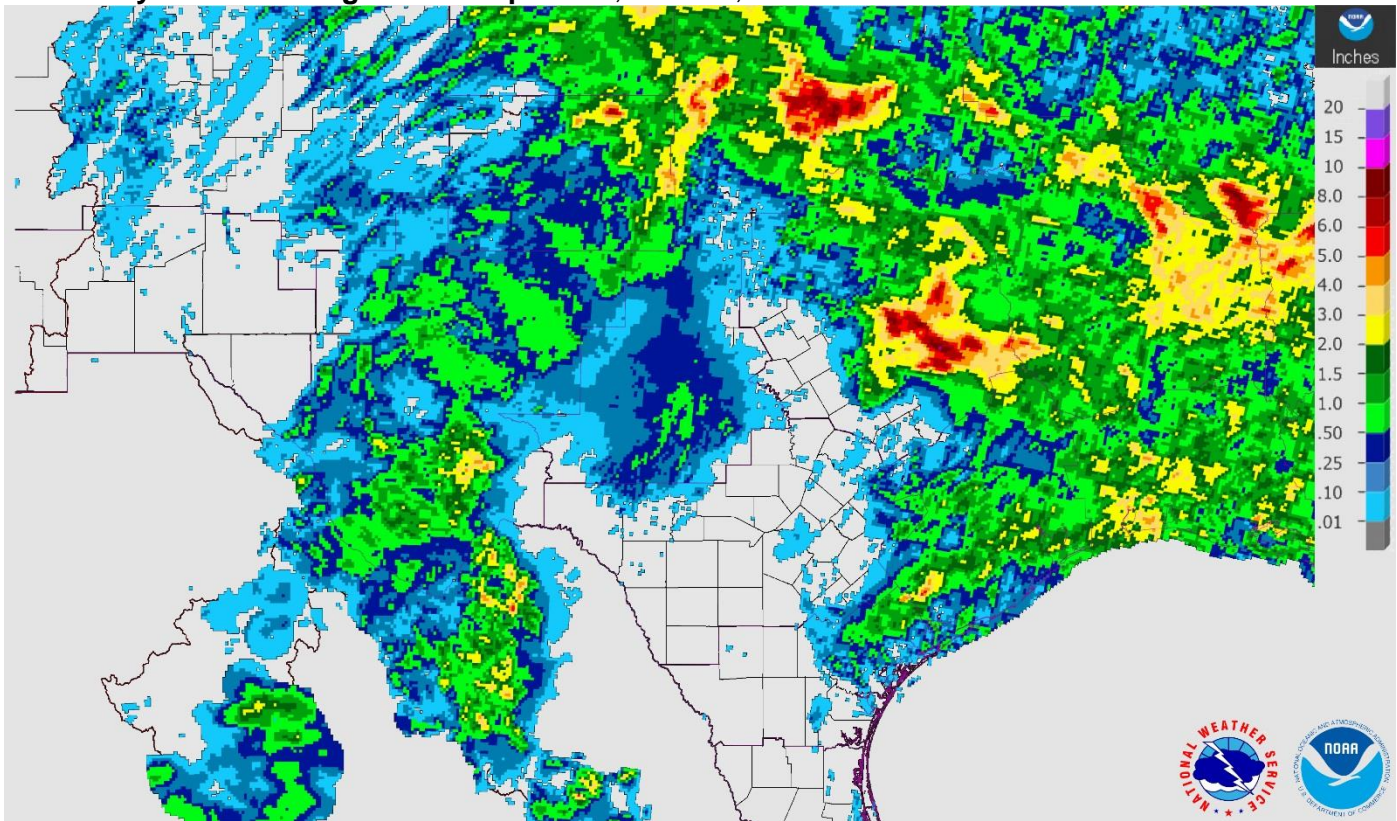
District	Topsoil Moisture Condition by District				Subsoil Moisture Condition by District				Days Suitable for Fieldwork
	Percentage of Acreage				Percentage of Acreage				
	Very Short	Short	Adequate	Surplus	Very Short	Short	Adequate	Surplus	
11	1	32	60	7	3	18	79	0	6.6
12	3	13	76	8	2	32	62	4	5.8
21	3	9	72	16	5	10	77	8	5.7
22	0	3	64	33	2	4	53	41	4.8
30	0	0	71	29	0	0	75	25	4.4
40	0	1	52	47	0	1	44	55	5.2
51	0	0	58	42	0	0	57	43	6.3
52	0	4	45	51	0	2	48	50	4.7
60	44	22	34	0	43	18	39	0	7.0
70	4	8	42	46	1	10	49	40	5.3
81	1	7	59	33	1	9	68	22	5.2
82	0	0	17	83	0	0	18	82	3.0
90	0	1	11	88	0	2	18	80	1.5
96	0	14	81	5	0	10	84	6	6.2
97	0	48	52	0	0	2	98	0	7.0
State	4	20	69	7	2	18	74	6	5.5

### Texas Agricultural Districts

- 11 Northern High Plains
- 12 Southern High Plains
- 21 Northern Low Plains
- 22 Southern Low Plains
- 30 Cross Timbers
- 40 Blacklands
- 51 North East
- 52 South East
- 60 Trans-Pecos
- 70 Edwards Plateau
- 81 South Central
- 82 Coaster Bend
- 90 Upper Coast
- 96 South
- 97 Lower Valley

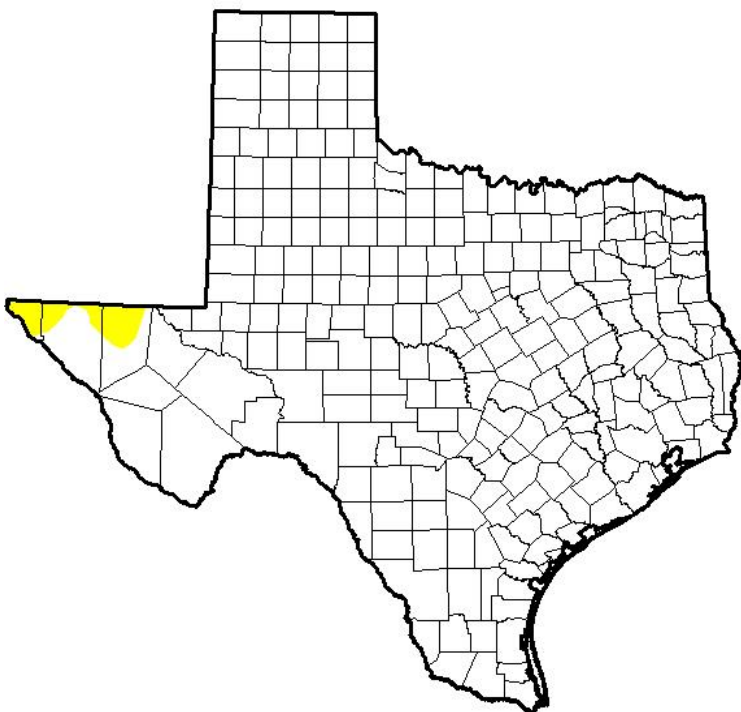


## Seven Day Observed Regional Precipitation, June 19, 2016



Source: National Weather Service, [www.nws.noaa.gov](http://www.nws.noaa.gov)

## Drought Monitor, Valid June 14, 2016



Drought Conditions (Percent Area)

	None	D0-D4	D1-D4	D2-D4	D3-D4	D4
<b>Current</b>	98.62	1.38	0.00	0.00	0.00	0.00
<b>Last Week</b> <i>6/7/2016</i>	98.31	1.69	0.00	0.00	0.00	0.00
<b>3 Months Ago</b> <i>3/15/2016</i>	88.58	11.42	0.12	0.00	0.00	0.00
<b>Start of Calendar Year</b> <i>12/29/2015</i>	95.48	4.52	0.00	0.00	0.00	0.00
<b>Start of Water Year</b> <i>9/29/2015</i>	34.51	65.49	38.32	17.55	6.27	0.00
<b>One Year Ago</b> <i>6/16/2015</i>	93.20	6.80	0.29	0.00	0.00	0.00

*Intensity:*

- D0 Abnormally Dry
- D1 Moderate Drought
- D2 Severe Drought
- D3 Extreme Drought
- D4 Exceptional Drought

*The Drought Monitor focuses on broad-scale conditions. Local conditions may vary. See accompanying text summary for forecast statements.*

**Author:**

Chris Fenimore  
NOAA/NESDIS/NCEI



Source: National Drought Mitigation Center, a partnership with USDA, U.S. Department of Commerce/NOAA, <http://droughtmonitor.unl.edu>