



# Texas Crop Progress and Condition

Southern Plains Regional Field Office  
Post Office Box 70 Austin, Texas 78767  
(800) 626-3142 · FAX (855) 270-2725 · www.nass.usda.gov/tx

Issue: TX-CW2416

Weekly Summary for June 20 - June 26

Released: June 27, 2016

Areas of the Edwards Plateau and South Texas received up to 6 inches of rainfall, Southeast Texas and the Upper Coast received up to 3 inches of rainfall. Other areas of the state observed scattered showers, although the Cross Timbers and the Blacklands received little or no rainfall.

**Small Grains:** Winter wheat harvest was in full swing across the state. Wheat and oats were damaged by previous weeks' excessive rainfall in areas of the Cross Timbers. Throughout the High Plains, wheat harvest was progressing well. In the Northern Low Plains, winter wheat harvest was nearing completion.

**Row Crops:** Cotton made good progress in most areas of the Edwards Plateau, the Coastal Bend, and the Upper Coast. Cotton reached the squaring stage in areas of the Southern High Plains and setting bolls in South Texas. Corn and sorghum progressed well in most areas of North and East Texas, though lack of moisture was causing some fields to dry out. Corn dried down as harvest approached in the Coastal Bend and corn leaf diseases affected fields in the Upper Coast. Some sorghum fields were being pressured by Johnsongrass in areas of the Blacklands and increasing sugarcane aphid numbers were reported in the Coastal Bend. Peanuts progressed well in the Southern High Plains. Soybeans were progressing well in areas of the Blacklands and sunflower planting neared completion in the Northern High Plains.

**Fruit, Vegetable, and Specialty Crops:** Fruits and vegetables were being harvested in Northeast Texas. Potato harvest was underway in South Texas.

**Livestock, Range, and Pasture:** Hot, dry weather across much of the Blacklands and Northeast Texas affected cattle, although they were reported in good condition. Livestock body condition was generally good across the state and continued to benefit from adequate pasture. Ponds and stock tanks remained at capacity in most of the state. Livestock producers reported increasing horn fly populations. Hay production and weed control activities continued.

## Crop Progress

Stage	Percent of Acreage			
	Current	Previous Week	Previous Year	5 Year Average
<b>Corn</b>				
Emerged	99	94	98	100
Silked	46	41	50	59
Dough	35	13	25	36
Dented	26	7	10	21
<b>Cotton</b>				
Planted	98	94	95	98
Squaring	17	15	21	22
Setting Bolls	8	4	5	8
<b>Peanuts</b>				
Pegging	13	7	17	8
<b>Rice</b>				
Headed	39	19	19	21
<b>Sorghum</b>				
Planted	96	90	94	95
Headed	58	40	48	58
Coloring	36	27	25	42
Mature	18	9	6	24
Harvested	4	N/A	1	2
<b>Soybeans</b>				
Planted	98	89	90	97
Emerged	96	86	77	94
Blooming	30	16	28	37
<b>Sunflowers</b>				
Planted	90	85	91	90
<b>Winter Wheat</b>				
Harvested	80	55	68	76
<b>Oats</b>				
Harvested	82	70	92	91

### Crop Condition

Crop	Percent of Acreage					Index <sup>1</sup>	
	Excellent	Good	Fair	Poor	Very Poor	2016	2015
Corn	15	59	21	4	1	83	78
Cotton	9	43	38	9	1	74	73
Peanuts	3	64	33	--	--	81	78
Rice	9	47	34	5	5	74	73
Sorghum	18	48	28	5	1	81	79
Soybeans	8	53	35	4	--	78	74
Wheat	7	36	43	11	3	69	68
Oats	5	35	38	14	8	64	58
Range and Pasture	20	50	24	5	1	--	--

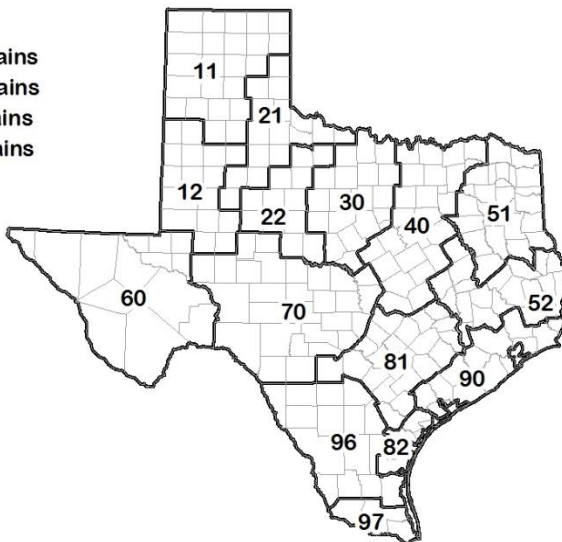
<sup>1</sup> The formula for the condition index is  $I = (5V + 25P + 60F + 90G + 110E)/100$  where I = crop condition index and V, P, F, G, E = percentage of crop rated very poor, poor, fair, good, excellent.

### Soil Moisture and Days Suitable by District

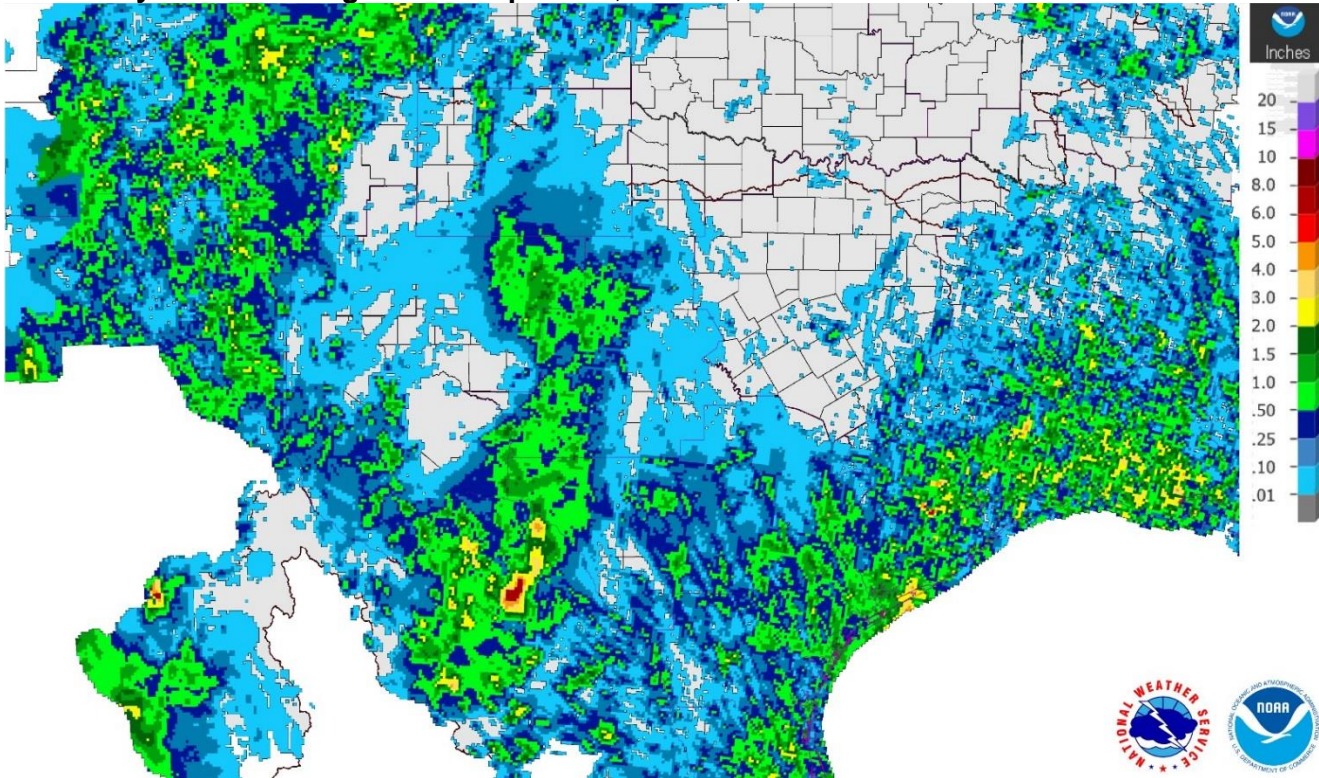
District	Topsoil Moisture Condition by District				Subsoil Moisture Condition by District				Days Suitable for Fieldwork
	Percentage of Acreage				Percentage of Acreage				
	Very Short	Short	Adequate	Surplus	Very Short	Short	Adequate	Surplus	
11	5	37	54	4	7	27	66	0	6.8
12	3	36	56	5	2	44	51	3	6.9
21	3	31	60	6	5	25	62	8	6.7
22	1	12	66	21	2	6	73	19	5.9
30	3	21	65	11	2	7	81	10	6.4
40	4	25	54	17	1	8	72	19	6.9
51	0	10	62	28	0	4	65	31	6.6
52	0	25	50	25	0	16	59	25	6.7
60	45	23	32	0	44	20	36	0	6.4
70	2	24	62	12	2	14	72	12	6.0
81	1	21	62	16	1	21	63	15	6.3
82	0	13	77	10	0	0	89	11	7.0
90	0	10	69	21	0	2	71	27	5.1
96	11	21	64	4	0	24	72	4	7.0
97	0	48	52	0	0	2	98	0	7.0
State	4	27	58	11	3	20	67	10	6.6

### Texas Agricultural Districts

- 11 Northern High Plains
- 12 Southern High Plains
- 21 Northern Low Plains
- 22 Southern Low Plains
- 30 Cross Timbers
- 40 Blacklands
- 51 North East
- 52 South East
- 60 Trans-Pecos
- 70 Edwards Plateau
- 81 South Central
- 82 Coaster Bend
- 90 Upper Coast
- 96 South
- 97 Lower Valley

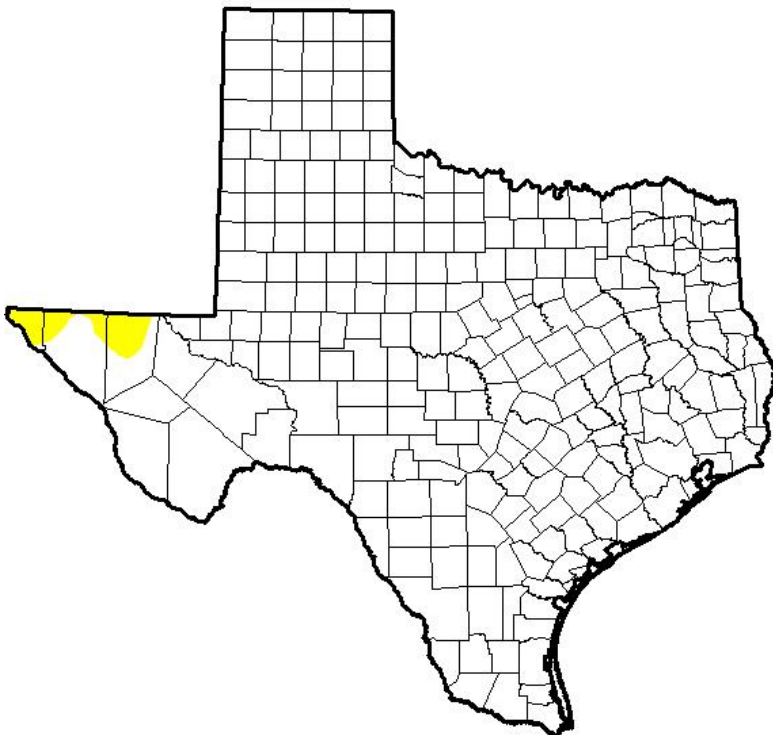


## Seven Day Observed Regional Precipitation, June 26, 2016



Source: National Weather Service, [www.nws.noaa.gov](http://www.nws.noaa.gov)

## Drought Monitor, Valid June 21, 2016



Drought Conditions (Percent Area)

	None	D0-D4	D1-D4	D2-D4	D3-D4	D4
<b>Current</b>	98.62	1.38	0.00	0.00	0.00	0.00
<b>Last Week</b> <i>6/14/2016</i>	98.62	1.38	0.00	0.00	0.00	0.00
<b>3 Months Ago</b> <i>3/22/2016</i>	85.64	14.36	0.68	0.00	0.00	0.00
<b>Start of Calendar Year</b> <i>1/22/2015</i>	95.48	4.52	0.00	0.00	0.00	0.00
<b>Start of Water Year</b> <i>9/29/2015</i>	34.51	65.49	38.32	17.55	6.27	0.00
<b>One Year Ago</b> <i>6/23/2015</i>	95.37	4.63	0.25	0.00	0.00	0.00

*Intensity:*

- D0 Abnormally Dry
- D1 Moderate Drought
- D2 Severe Drought
- D3 Extreme Drought
- D4 Exceptional Drought

*The Drought Monitor focuses on broad-scale conditions. Local conditions may vary. See accompanying text summary for forecast statements.*

**Author:**  
Eric Luebbehusen  
U.S. Department of Agriculture



Source: National Drought Mitigation Center, a partnership with USDA, U.S. Department of Commerce/NOAA, <http://droughtmonitor.unl.edu>