



Texas Crop Progress and Condition

Southern Plains Regional Field Office
Post Office Box 70 Austin, Texas 78767
(800) 626-3142 · FAX (855) 270-2725 · www.nass.usda.gov/tx

Issue: TX-CW2516

Weekly Summary for June 27 - July 3

Released: July 5, 2016

Hot temperatures were experienced across the state early in the week, as the week progressed isolated showers were seen. Areas of the Trans-Pecos received up to 6 inches of rainfall, while the rest of the state experienced upwards of 2 inches to little or no precipitation.

Small Grains: Winter wheat harvest neared completion throughout the state. Wheat and oat crops in areas of the Cross Timbers were abandoned due to heavy rainfall received in late June.

Row Crops: Row crops continued to make progress statewide. Cotton was at the squaring stage in areas of the Southern Plains and was setting bolls in South Texas. Corn was at the denting stage and drying out in areas of the Blacklands and South Texas. Sorghum progressed well and reached the coloring stage in areas of South Texas. Peanuts planting neared completion in areas of South Texas and continued to progress in areas of the Southern High Plains. Soybeans progressed well in areas of the Blacklands and sunflowers planting continued in the Northern High Plains.

Fruit, Vegetable, and Specialty Crops: Harvest of warm season vegetables continued in North East Texas but sweet potato growers reported heat stress. The pecan crop progressed well in areas of the Southern High Plains. Watermelon harvest was active in many areas of South Texas and the Southern High Plains.

Livestock, Range, and Pasture: Range and pasture were beginning to show signs of stress but were still in mostly good condition. Ponds and stock tanks remained at capacity statewide and livestock were in good condition overall. In the Northern Low Plains, the Upper Coast, and South Texas, livestock producers reported an abundance of forage still available for grazing on native range and pastures. Hay production and weed control activities continued.

Crop Progress

Stage	Percent of Acreage			
	Current Week	Previous Week	Previous Year	5 Year Average
Corn				
Silked	53	46	57	65
Dough	45	35	39	46
Dented	37	26	20	32
Cotton				
Squaring	27	17	32	36
Setting Bolls	9	8	7	10
Peanuts				
Pegging	23	13	21	14
Rice				
Headed	48	39	38	31
Sorghum				
Headed	60	58	54	60
Coloring	40	36	37	48
Mature	29	18	16	32
Harvested	10	4	2	12
Soybeans				
Blooming	45	30	38	48
Sunflowers				
Planted	92	90	92	94
Winter Wheat				
Harvested	95	80	82	88
Oats				
Harvested	96	82	95	95

Crop Condition

Crop	Percent of Acreage					Index ¹	
	Excellent	Good	Fair	Poor	Very Poor	2016	2015
Corn	15	56	24	4	1	82	78
Cotton	8	42	40	9	1	73	73
Peanuts	3	63	33	1	--	80	78
Rice	9	48	37	3	3	76	73
Sorghum	17	47	33	2	1	81	79
Soybeans	9	51	36	3	1	78	74
Wheat	7	36	43	11	3	69	68
Oats	5	35	38	14	8	64	58
Range and Pasture	17	48	27	6	2	--	--

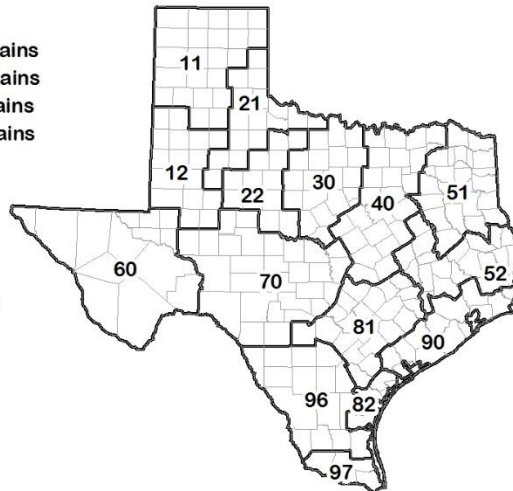
¹ The formula for the condition index is $I = (5V + 25P + 60F + 90G + 110E)/100$ where I = crop condition index and V, P, F, G, E = percentage of crop rated very poor, poor, fair, good, excellent.

Soil Moisture and Days Suitable by District

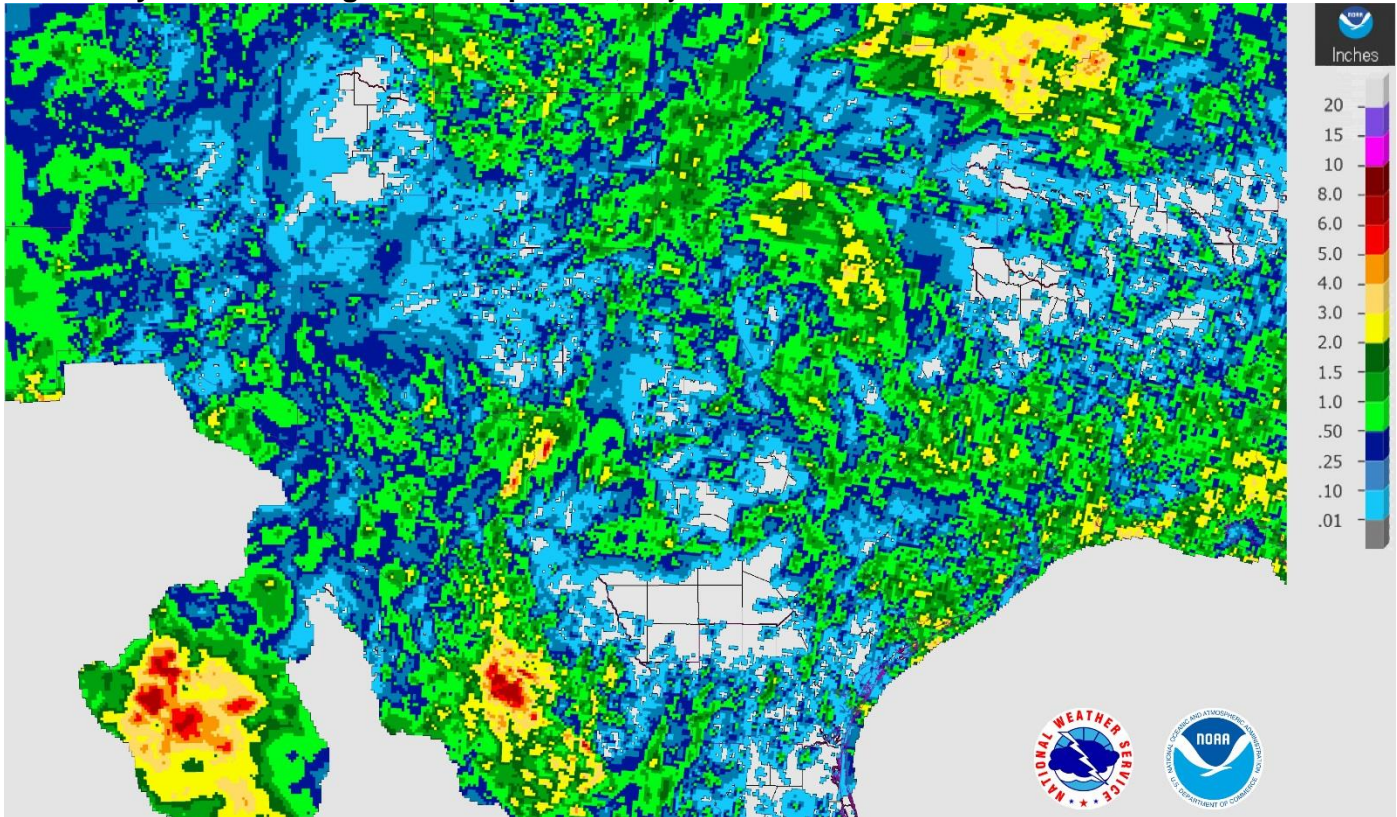
District	Topsoil Moisture Condition by District				Subsoil Moisture Condition by District				Days Suitable for Fieldwork
	Percentage of Acreage				Percentage of Acreage				
	Very Short	Short	Adequate	Surplus	Very Short	Short	Adequate	Surplus	
11	0	46	54	0	2	41	56	1	6.1
12	6	49	44	1	5	48	45	2	6.9
21	3	39	53	5	5	26	62	7	6.5
22	1	20	65	14	2	11	74	13	6.2
30	4	24	65	7	4	11	76	9	6.4
40	9	28	59	4	2	20	72	6	6.5
51	4	21	53	22	1	16	59	24	6.5
52	0	34	56	10	0	22	66	12	6.9
60	46	18	36	0	43	22	35	0	6.5
70	2	28	63	7	2	17	74	7	6.7
81	2	33	57	8	1	28	60	11	5.9
82	5	23	62	10	0	8	83	9	7.0
90	5	13	71	11	0	11	74	15	5.7
96	12	43	41	4	12	22	62	4	7.0
97	0	48	52	0	0	7	93	0	7.0
State	4	35	56	5	3	27	64	6	6.4

Texas Agricultural Districts

- 11 Northern High Plains
- 12 Southern High Plains
- 21 Northern Low Plains
- 22 Southern Low Plains
- 30 Cross Timbers
- 40 Blacklands
- 51 North East
- 52 South East
- 60 Trans-Pecos
- 70 Edwards Plateau
- 81 South Central
- 82 Coaster Bend
- 90 Upper Coast
- 96 South
- 97 Lower Valley

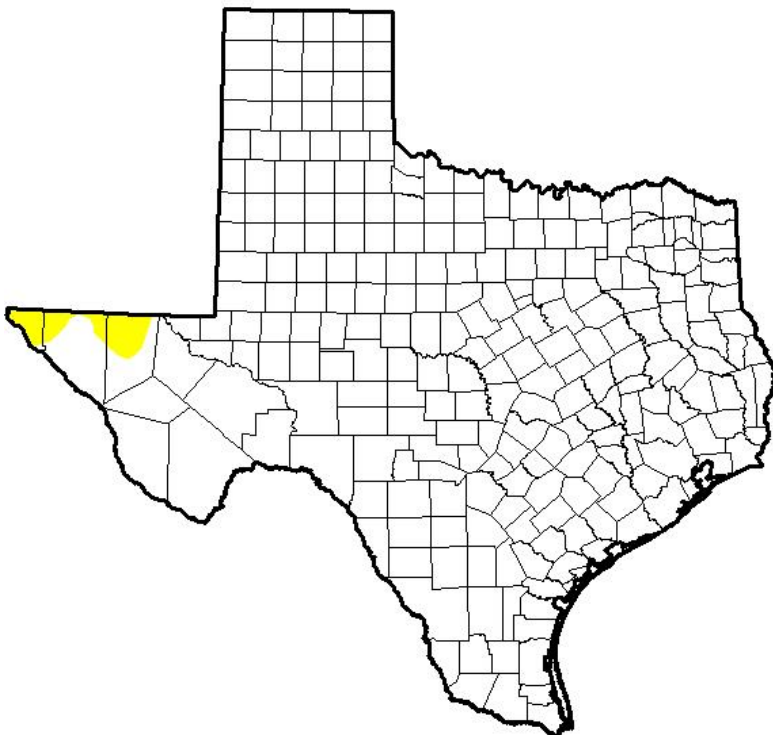


Seven Day Observed Regional Precipitation, July 4, 2016



Source: National Weather Service, www.nws.noaa.gov

Drought Monitor, Valid June 28, 2016



Drought Conditions (Percent Area)

	None	D0-D4	D1-D4	D2-D4	D3-D4	D4
Current	98.62	1.38	0.00	0.00	0.00	0.00
Last Week 6/21/2016	98.62	1.38	0.00	0.00	0.00	0.00
3 Months Ago 3/29/2016	75.16	24.84	2.96	0.00	0.00	0.00
Start of Calendar Year 1/22/2015	95.48	4.52	0.00	0.00	0.00	0.00
Start of Water Year 9/29/2015	34.51	65.49	38.32	17.55	6.27	0.00
One Year Ago 6/30/2015	95.37	4.63	0.25	0.00	0.00	0.00

Intensity:

- D0 Abnormally Dry
- D1 Moderate Drought
- D2 Severe Drought
- D3 Extreme Drought
- D4 Exceptional Drought

The Drought Monitor focuses on broad-scale conditions. Local conditions may vary. See accompanying text summary for forecast statements.

Author:

Eric Luebehusen
U.S. Department of Agriculture



Source: National Drought Mitigation Center, a partnership with USDA, U.S. Department of Commerce/NOAA, <http://droughtmonitor.unl.edu>