



Texas Crop Progress and Condition

Southern Plains Regional Field Office
Post Office Box 70 Austin, Texas 78767
(800) 626-3142 · FAX (855) 270-2725 · www.nass.usda.gov/tx

Issue: TX-CW2616

Weekly Summary for July 4 - July 10

Released: July 11, 2016

Hot, windy and dry conditions persisted throughout much of the state. Isolated areas of the Southern High Plains, the Cross Timbers, and the Blacklands received upwards of 4 inches of rainfall. Areas of the Trans-Pecos and the Low Plains experienced between 1 to 3 inches of precipitation. Large portions of South Central Texas and areas East Texas received little to no measurable rainfall.

Small Grains: Winter wheat harvest neared completion in areas of the Southern High Plains, while in the Blacklands, wheat and oat harvest was complete. Producers in the Northern High Plains were spraying and plowing fields.

Crop Progress

Stage	Percent of Acreage			
	Current	Previous Week	Previous Year	Average
Corn				
Silked	67	53	70	76
Dough	50	45	44	53
Dented	45	37	28	41
Mature	19	N/A	8	21
Cotton				
Squaring	43	27	47	52
Setting Bolls	13	9	10	13
Bolls Opening	1		2	1
Peanuts				
Pegging	34	23	28	34
Rice				
Headed	71	48	51	49
Sorghum				
Headed	63	60	59	63
Coloring	44	40	44	53
Mature	36	29	24	41
Harvested	19	10	6	19
Soybeans				
Blooming	47	45	43	59
Setting Pods	5		23	8
Sunflowers				
Planted	95	92	96	96

Row Crops: Corn was drying down in areas of the Blacklands and the Upper Coast, while producers prepared for harvest in South Texas. Harvest was progressing well in the Lower Valley. Sorghum harvest was in full swing in areas of the Upper Coast and neared completion in the Lower Valley. Cotton continued to progress throughout the state as producers irrigated crops in areas of the Northern High Plains and the Lower Valley. Soybeans were in good condition in areas of the Northern High Plains, the Blacklands, and the Upper Coast. Peanuts continued pegging across the Southern High Plains and planting was completed in South Texas. In areas of the Upper Coast, rice continued to progress with many producers preparing for harvest in the upcoming weeks. Sunflower planting was nearing completion in the Northern High Plains.

Fruit, Vegetable, and Specialty Crops: Watermelon harvest continued in the Southern High Plains and neared completion in areas of South Texas. In Northeast Texas, producers continued to harvest fruits and vegetables. Cantaloupe and onion harvest neared completion in South Texas. Pecans progressed well in the Cross Timbers.

Livestock, Range, and Pasture: Cattle were in good condition throughout the state. Range and pastures conditions were beginning to decline due to hot dry weather. Supplemental feeding continued in areas of South Texas and the Lower Valley. Hay production continued in areas of the Cross Timbers, the Blacklands, East Texas, and the Upper Coast.

Crop Condition

Crop	Percent of Acreage					Index ¹	
	Excellent	Good	Fair	Poor	Very Poor	2016	2015
Corn	15	53	27	4	1	81	77
Cotton	8	40	38	13	1	71	74
Peanuts	3	63	33	1	--	80	78
Rice	9	48	36	4	3	76	75
Sorghum	17	45	35	2	1	81	80
Soybeans	8	50	36	4	2	76	76
Range and Pasture	14	45	31	8	2	63	58

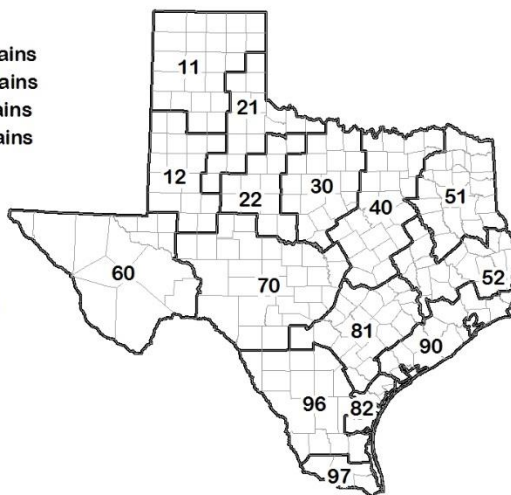
¹ The formula for the condition index is $I = (5V + 25P + 60F + 90G + 110E)/100$ where I = crop condition index and V, P, F, G, E = percentage of crop rated very poor, poor, fair, good, excellent.

Soil Moisture and Days Suitable by District

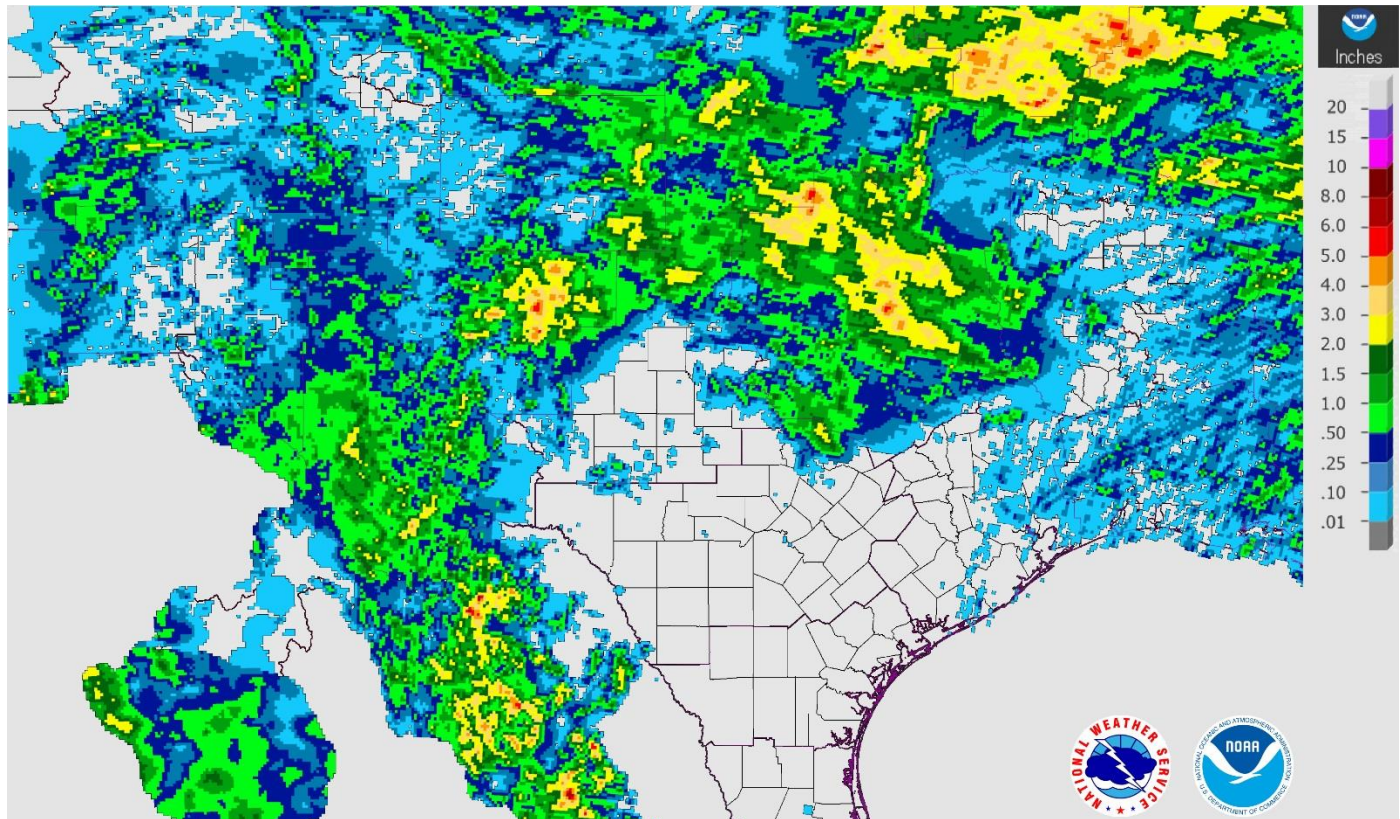
District	Topsoil Moisture Condition by District				Subsoil Moisture Condition by District				Days Suitable for Fieldwork
	Percentage of Acreage				Percentage of Acreage				
	Very Short	Short	Adequate	Surplus	Very Short	Short	Adequate	Surplus	
11	10	50	40	0	10	44	45	1	6.8
12	8	64	28	0	5	55	39	1	7.0
21	1	30	65	4	1	32	59	8	6.6
22	1	35	52	12	2	14	70	14	6.2
30	6	28	66	1	5	15	78	2	6.3
40	15	33	51	1	8	27	61	4	6.7
51	8	23	52	17	3	26	56	15	6.7
52	18	32	46	4	1	36	56	7	7.0
60	47	17	36	0	43	20	37	0	6.6
70	5	40	51	4	4	21	70	5	6.9
81	7	46	41	6	3	35	54	8	6.9
82	15	37	43	5	2	19	75	4	7.0
90	5	46	40	9	0	16	74	10	6.7
96	17	63	20	0	14	24	62	0	6.9
97	0	70	30	0	0	18	82	0	7.0
State	8	45	43	4	6	33	56	5	6.7

Texas Agricultural Districts

- 11 Northern High Plains
- 12 Southern High Plains
- 21 Northern Low Plains
- 22 Southern Low Plains
- 30 Cross Timbers
- 40 Blacklands
- 51 North East
- 52 South East
- 60 Trans-Pecos
- 70 Edwards Plateau
- 81 South Central
- 82 Coaster Bend
- 90 Upper Coast
- 96 South
- 97 Lower Valley

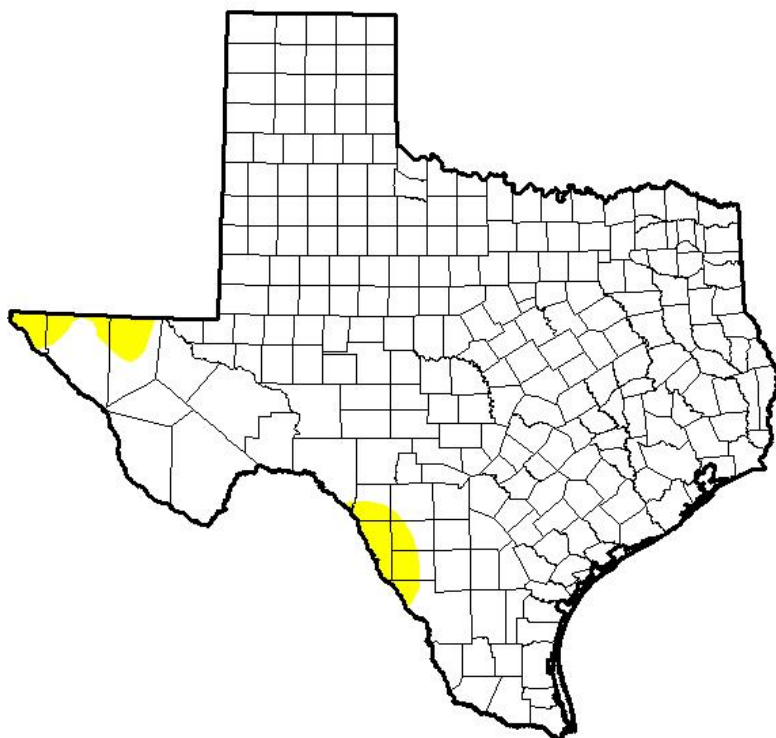


Seven Day Observed Regional Precipitation, July 10, 2016



Source: National Weather Service, www.nws.noaa.gov

Drought Monitor, Valid July 5, 2016



Drought Conditions (Percent Area)

	None	D0-D4	D1-D4	D2-D4	D3-D4	D4
Current	97.07	2.93	0.00	0.00	0.00	0.00
Last Week <i>6/28/2016</i>	98.62	1.38	0.00	0.00	0.00	0.00
3 Months Ago <i>4/5/2016</i>	74.03	25.97	3.94	0.00	0.00	0.00
Start of Calendar Year <i>1/22/2015</i>	95.48	4.52	0.00	0.00	0.00	0.00
Start of Water Year <i>9/29/2015</i>	34.51	65.49	38.32	17.55	6.27	0.00
One Year Ago <i>7/7/2015</i>	95.37	4.63	0.25	0.00	0.00	0.00

Intensity:

- D0 Abnormally Dry
- D1 Moderate Drought
- D2 Severe Drought
- D3 Extreme Drought
- D4 Exceptional Drought

The Drought Monitor focuses on broad-scale conditions. Local conditions may vary. See accompanying text summary for forecast statements.

Author:

David Miskus
NOAA/NWS/NCEP/CPC



Source: National Drought Mitigation Center, a partnership with USDA, U.S. Department of Commerce/NOAA, <http://droughtmonitor.unl.edu>