



Texas Crop Progress and Condition

Southern Plains Regional Field Office
Post Office Box 70 Austin, Texas 78767
(800) 626-3142 · FAX (855) 270-2725 · www.nass.usda.gov/tx

Issue: TX-CW2716

Weekly Summary for July 11-July 17

Released: July 18, 2016

Mild showers were experienced across the northwestern part of the state, along areas of the Plains and Trans-Pecos with precipitation ranging between 0.5 to 2.0 inches. Dry and windy conditions persisted across much of the state. Large portions of South and Central Texas received little to no rainfall.

Small Grains: Winter wheat harvest near completion in areas of the Cross Timbers.

Row Crops: Irrigation of row crops remained active across much of the state. Cotton continued to make progress, although some cotton producers reported hail damage in areas of the Northern Low Plains. Corn harvest was active in areas of the Coastal Bend, the Upper Coast, North East, South Central, and South Texas. Sorghum and soybeans continued to develop, with some reports of sugarcane aphids affecting some sorghum fields in areas of the Southern Low Plains. Peanuts entered pegging stage in areas of South Texas.

Crop Progress

Stage	Percent of Acreage			
	Current	Previous Week	Previous Year	5 Year Average
Corn				
Silked	74	67	75	81
Dough	53	50	51	60
Dented	47	45	37	51
Mature	32	19	19	35
Cotton				
Squaring	71	43	63	69
Setting Bolls	18	13	19	20
Bolls Opening	5	1	5	5
Peanuts				
Pegging	42	34	33	51
Rice				
Headed	83	71	60	66
Sorghum				
Headed	76	63	64	70
Coloring	48	44	48	60
Mature	40	36	31	49
Harvested	25	19	12	27
Soybeans				
Blooming	50	47	53	66
Setting Pods	20	5	30	24
Sunflowers				
Planted	98	95	98	98
Winter Wheat				
Harvested	100	97	96	99
Oats				
Harvested	100	97	97	97

Fruit, Vegetable, and Specialty Crops: Pecans continued to progress in areas of the Cross Timbers and the Edwards Plateau.

Livestock, Range, and Pasture: Cattle remained in good condition throughout the state, although range and pasture conditions suffered due to lack of precipitation in areas across Southern and Central Texas. Active wildfires were reported in areas of the Northern Low Plains.

Crop Condition

Crop	Percent of Acreage					Index ¹	
	Excellent	Good	Fair	Poor	Very Poor	2016	2015
Corn	12	51	31	5	1	79	77
Cotton	6	41	40	12	1	71	74
Peanuts	5	53	41	1	--	78	78
Rice	9	48	36	4	3	76	75
Sorghum	17	45	34	4	--	81	80
Soybeans	8	46	40	5	1	76	76
Range and Pasture	10	39	37	11	3	--	--

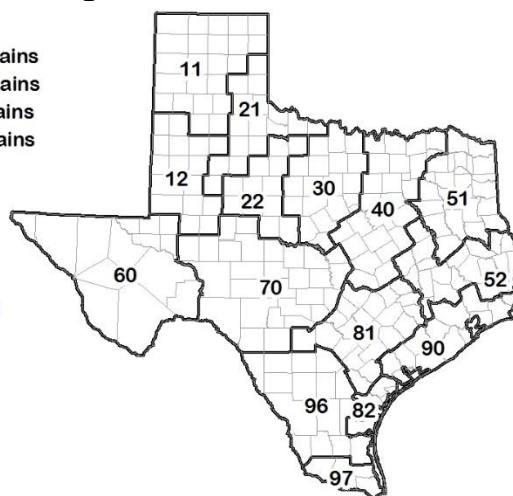
¹ The formula for the condition index is $I = (5V + 25P + 60F + 90G + 110E)/100$ where I = crop condition index and V, P, F, G, E = percentage of crop rated very poor, poor, fair, good, excellent.

Soil Moisture and Days Suitable by District

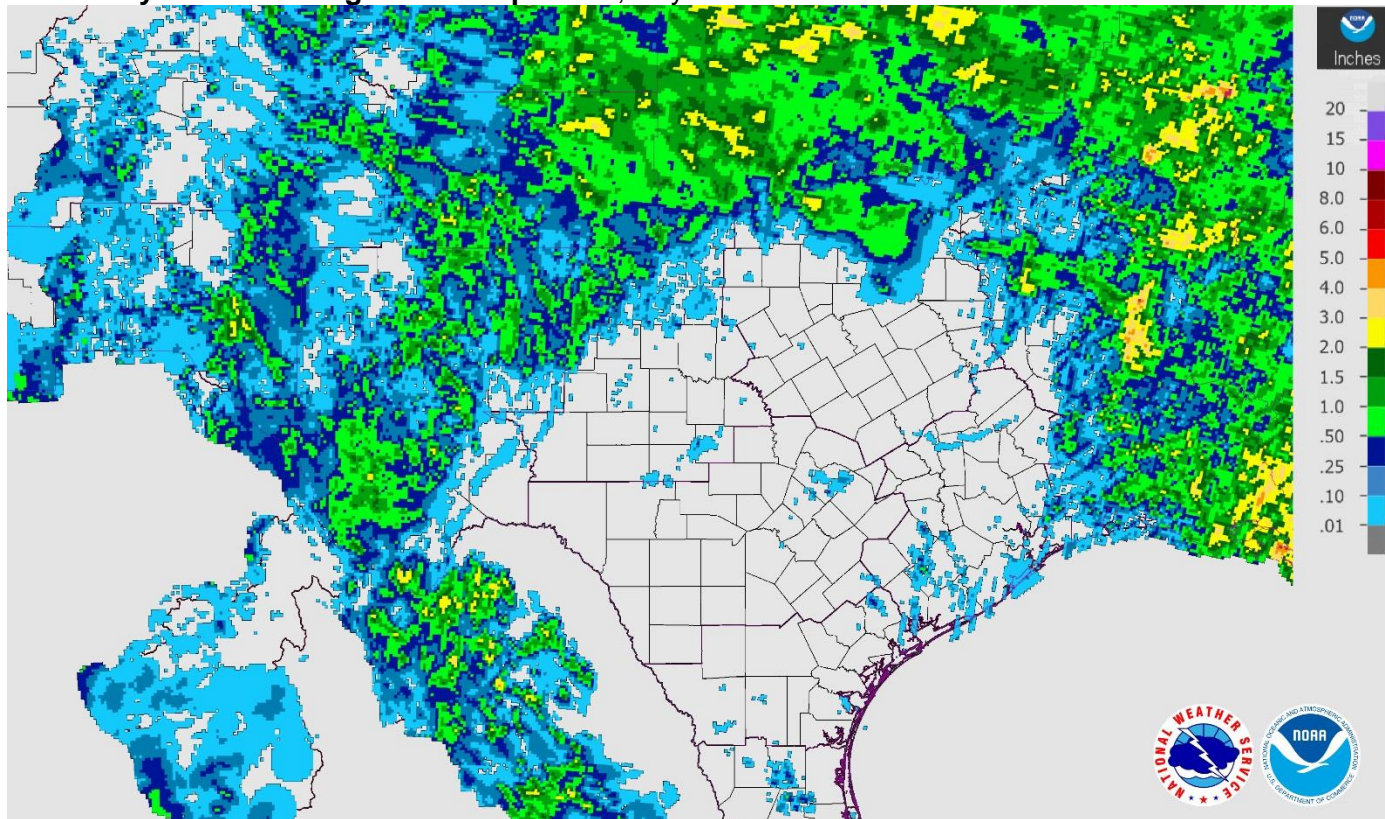
District	Topsoil Moisture Condition by District				Subsoil Moisture Condition by District				Days Suitable for Fieldwork
	Percentage of Acreage				Percentage of Acreage				
	Very Short	Short	Adequate	Surplus	Very Short	Short	Adequate	Surplus	
11	21	47	31	1	15	54	31	0	6.7
12	7	70	23	0	6	56	37	1	7.0
21	2	44	49	5	3	36	54	7	6.5
22	6	53	40	1	3	28	65	4	6.5
30	6	33	61	0	5	24	71	0	6.8
40	19	43	37	1	14	33	51	2	6.8
51	13	38	41	8	8	38	46	8	6.9
52	22	35	39	4	4	44	45	7	7.0
60	47	16	37	0	46	17	37	0	6.7
70	6	48	42	4	4	30	61	5	6.9
81	15	44	35	6	11	35	46	8	6.7
82	16	49	30	5	4	30	62	4	7.0
90	10	46	37	7	5	17	70	8	7.0
96	22	66	12	0	19	47	34	0	7.0
97	0	82	18	0	0	24	76	0	7.0
State	13	51	34	2	9	40	48	3	6.8

Texas Agricultural Districts

- 11 Northern High Plains
- 12 Southern High Plains
- 21 Northern Low Plains
- 22 Southern Low Plains
- 30 Cross Timbers
- 40 Blacklands
- 51 North East
- 52 South East
- 60 Trans-Pecos
- 70 Edwards Plateau
- 81 South Central
- 82 Coaster Bend
- 90 Upper Coast
- 96 South
- 97 Lower Valley

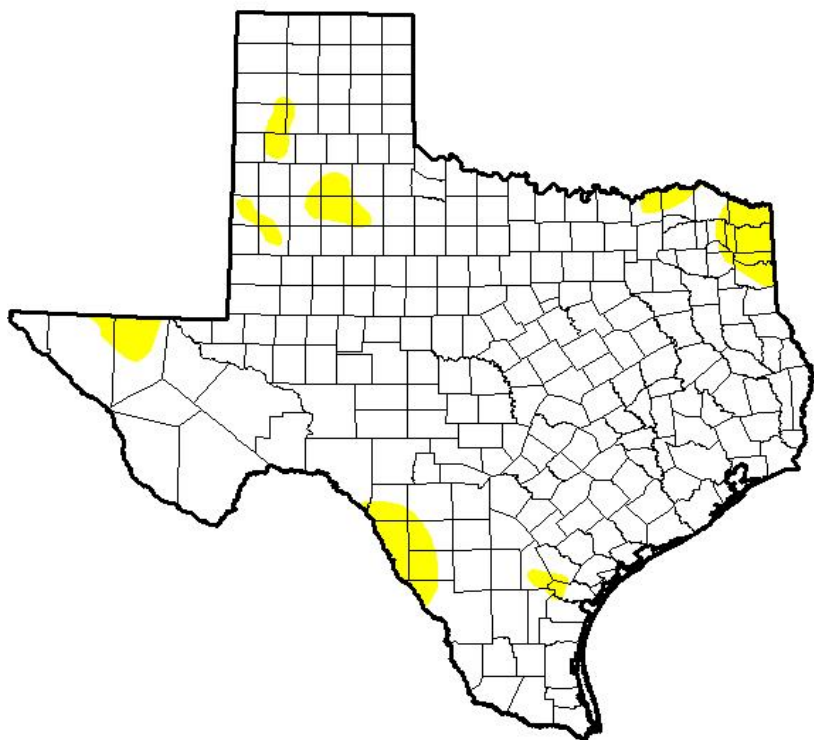


Seven Day Observed Regional Precipitation, July 17 2016



Source: National Weather Service, www.nws.noaa.gov

Drought Monitor, Valid July 12, 2016



Drought Conditions (Percent Area)

	None	D0-D4	D1-D4	D2-D4	D3-D4	D4
Current	93.97	6.03	0.00	0.00	0.00	0.00
Last Week 7/5/2016	97.07	2.93	0.00	0.00	0.00	0.00
3 Months Ago 4/12/2016	74.56	25.44	4.06	0.00	0.00	0.00
Start of Calendar Year 12/29/2015	95.48	4.52	0.00	0.00	0.00	0.00
Start of Water Year 9/29/2015	34.51	65.49	38.32	17.55	6.27	0.00
One Year Ago 7/14/2015	97.16	2.84	0.00	0.00	0.00	0.00

Intensity:

- D0 Abnormally Dry
- D1 Moderate Drought
- D2 Severe Drought
- D3 Extreme Drought
- D4 Exceptional Drought

The Drought Monitor focuses on broad-scale conditions. Local conditions may vary. See accompanying text summary for forecast statements.

Author:

David Miskus
NOAA/NWS/NCEP/CPC



Source: National Drought Mitigation Center, a partnership with USDA, U.S. Department of Commerce/NOAA, <http://droughtmonitor.unl.edu>