



Texas Crop Progress and Condition

Southern Plains Regional Field Office
Post Office Box 70 Austin, Texas 78767
(800) 626-3142 · FAX (855) 270-2725 · www.nass.usda.gov/tx

Issue: TX-CW2816

Weekly Summary for July 18-July 24

Released: July 25, 2016

Little to no precipitation was experienced across most of the state, areas of East Texas, and the Upper Coast received rainfall ranging between 0.1 to 2.0 inches. Winds and high temperatures persisted in areas of the Northern High Plains and the Edwards Plateau. Isolated hail storms were reported in areas of the Southern High Plains.

Small Grains: Winter wheat producers in areas of the Northern Low Plains and Southern High Plains were concerned with low moisture levels heading into the planting season.

Row Crops: With continued sparse precipitation across the state row crop irrigation remained active as cotton continued to make progress. Some cotton and corn producers reported hail damage in isolated areas of the Southern High Plains. Corn harvest was active in areas of the Lower Valley, the Upper Coast, South Central, and South Texas. Sorghum and soybeans continued to progress with sorghum harvest being active in areas of the Blacklands, the Coastal Bend, the Upper Coast, and South Texas. Soybeans were blooming and setting pods in the Blacklands

Fruit, Vegetable, and Specialty Crops: Pecans continued to progress in areas of South Texas, with producers commencing irrigation due to dry conditions.

Livestock, Range, and Pasture: Cattle remained in mostly good condition across the state. However, most areas of the state reported lowering stock pond levels, as well as, declining range and pasture conditions. The lack of moisture has also raised wildfire concerns in areas Cross Timbers, the Edwards Plateau and South Texas.

Crop Progress

Stage	Percent of Acreage			
	Current	Previous Week	Previous Year	5 Year Average
Corn				
Silked	92	74	81	88
Dough	58	53	61	65
Dented	52	47	47	58
Mature	41	32	30	44
Cotton				
Squaring	82	71	76	80
Setting Bolls	36	18	27	30
Bolls Opening	6	5	7	8
Peanuts				
Pegging	57	42	47	61
Rice				
Headed	91	83	74	77
Harvested	6	N/A	0	0
Sorghum				
Headed	80	76	80	79
Coloring	58	48	53	66
Mature	50	40	38	56
Harvested	30	25	18	35
Soybeans				
Blooming	70	50	67	75
Setting Pods	40	20	40	43

Crop Condition

Crop	Percent of Acreage					Index ¹	
	Excellent	Good	Fair	Poor	Very Poor	2016	2015
Corn	12	47	30	9	2	76	77
Cotton	6	39	38	14	3	68	72
Peanuts	5	49	39	7	0	75	78
Rice	9	48	36	4	3	76	75
Sorghum	17	41	33	8	1	77	79
Soybeans	8	44	42	5	1	75	76
Range and Pasture	6	34	41	14	5	--	--

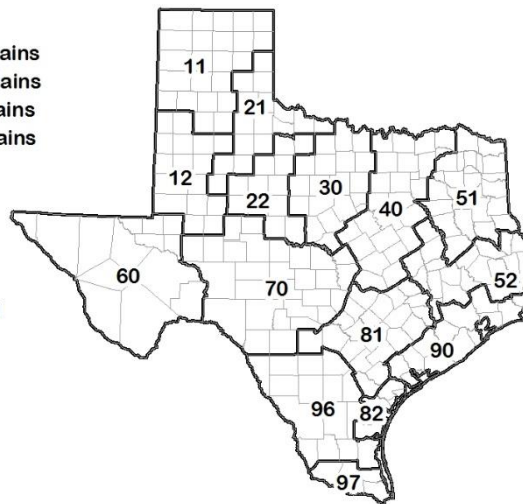
¹ The formula for the condition index is $I = (5V + 25P + 60F + 90G + 110E)/100$ where I = crop condition index and V, P, F, G, E = percentage of crop rated very poor, poor, fair, good, excellent.

Soil Moisture and Days Suitable by District

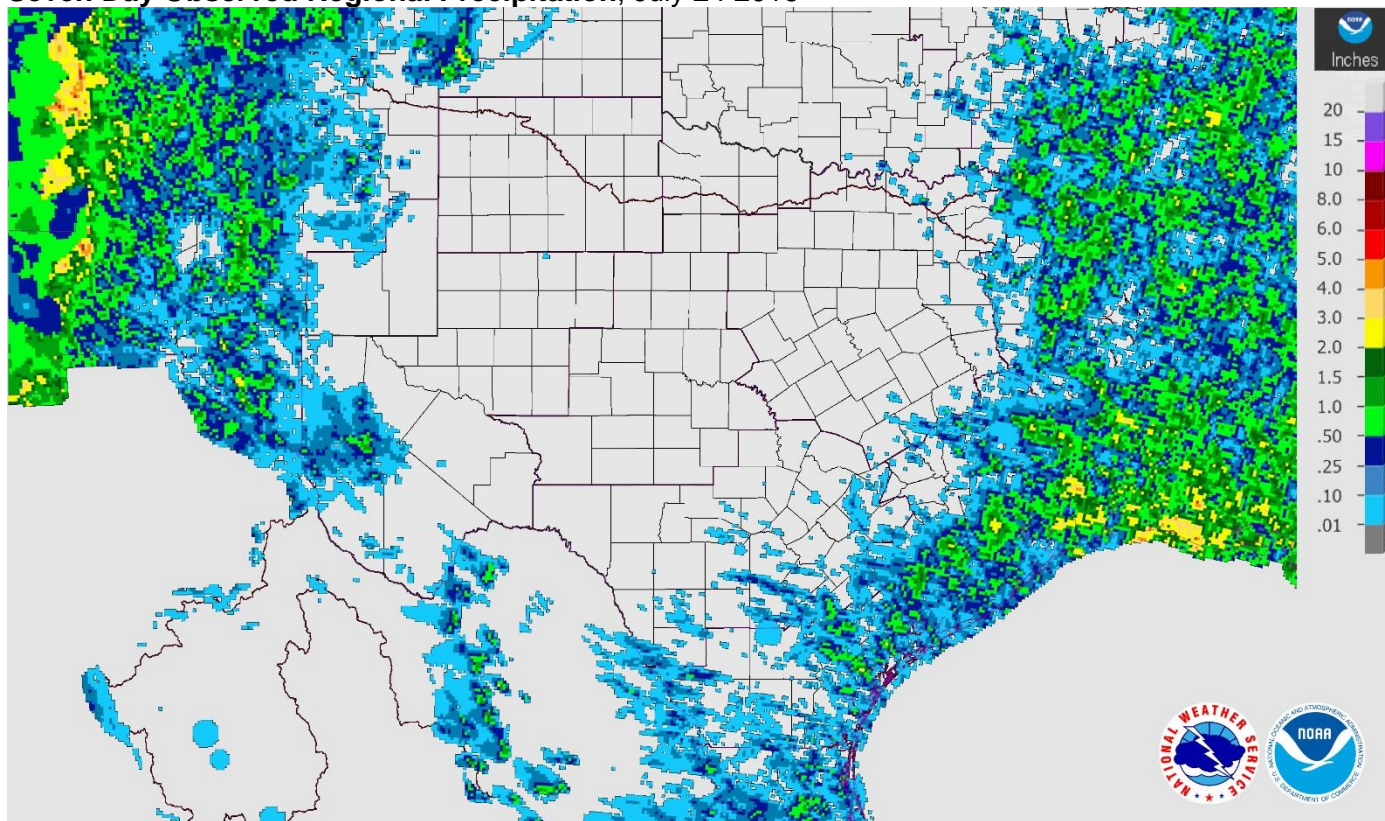
District	Topsoil Moisture Condition by District				Subsoil Moisture Condition by District				Days Suitable for Fieldwork
	Percentage of Acreage				Percentage of Acreage				
	Very Short	Short	Adequate	Surplus	Very Short	Short	Adequate	Surplus	
11	30	53	16	1	25	47	28	0	7.0
12	25	65	10	0	16	62	22	0	6.9
21	5	48	45	2	5	41	54	0	6.9
22	20	50	30	0	10	27	60	3	6.7
30	7	49	43	1	6	38	54	2	6.6
40	30	43	26	1	20	40	38	2	7.0
51	20	40	34	6	15	40	37	8	6.9
52	27	38	32	3	8	54	31	7	7.0
60	48	15	37	0	48	16	36	0	7.0
70	16	56	26	2	11	39	48	2	7.0
81	15	47	34	4	14	38	43	5	6.8
82	16	53	26	5	7	34	55	4	7.0
90	9	50	34	7	3	22	68	7	6.8
96	53	33	14	0	46	24	30	0	7.0
97	0	86	14	0	0	28	72	0	7.0
State	22	52	24	2	16	42	40	2	6.9

Texas Agricultural Districts

- 11 Northern High Plains
- 12 Southern High Plains
- 21 Northern Low Plains
- 22 Southern Low Plains
- 30 Cross Timbers
- 40 Blacklands
- 51 North East
- 52 South East
- 60 Trans-Pecos
- 70 Edwards Plateau
- 81 South Central
- 82 Coaster Bend
- 90 Upper Coast
- 96 South
- 97 Lower Valley

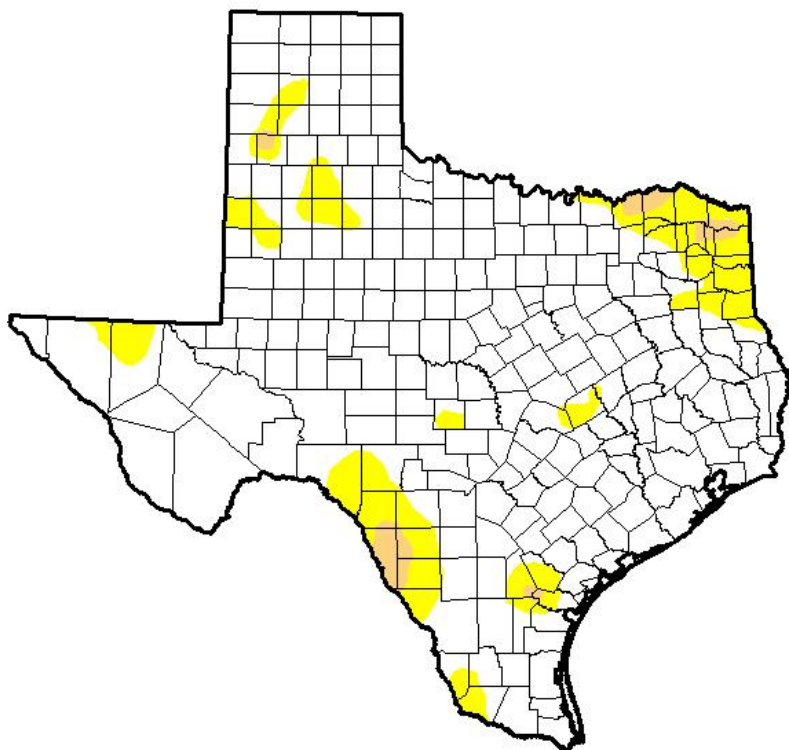


Seven Day Observed Regional Precipitation, July 24 2016



Source: National Weather Service, www.nws.noaa.gov

Drought Monitor, Valid July 19, 2016



Drought Conditions (Percent Area)

	None	D0-D4	D1-D4	D2-D4	D3-D4	D4
Current	86.88	13.12	1.66	0.00	0.00	0.00
Last Week 7/12/2016	93.97	6.03	0.00	0.00	0.00	0.00
3 Months Ago 4/19/2016	80.58	19.42	4.59	0.35	0.00	0.00
Start of Calendar Year 12/29/2015	95.48	4.52	0.00	0.00	0.00	0.00
Start of Water Year 9/29/2015	34.51	65.49	38.32	17.55	6.27	0.00
One Year Ago 7/21/2015	95.82	4.18	0.00	0.00	0.00	0.00

Intensity:

- D0 Abnormally Dry
- D1 Moderate Drought
- D2 Severe Drought
- D3 Extreme Drought
- D4 Exceptional Drought

The Drought Monitor focuses on broad-scale conditions. Local conditions may vary. See accompanying text summary for forecast statements.

Author:

Chris Fenimore
NCEI/NESDIS/NOAA



Source: National Drought Mitigation Center, a partnership with USDA, U.S. Department of Commerce/NOAA, <http://droughtmonitor.unl.edu>