



Texas Crop Progress and Condition

Southern Plains Regional Field Office
Post Office Box 70 Austin, Texas 78767
(800) 626-3142 · FAX (855) 270-2725 · www.nass.usda.gov/tx

Issue: TX-CW2916

Weekly Summary for July 25-July 31

Released: August 1, 2016

The majority of the state received measurable rainfall last week. The Upper Coast and South Texas received up to 8 inches in isolated areas, while the Northern High Plains, East Texas, and the Lower Valley saw between 1 to 3 inches. Other areas within the state received trace amounts to one inch of rainfall. Summer temperatures continued across the state averaging between the mid 90's and low 100's.

Small Grains: Small grain producers across the state continued field work ahead of fall seeding.

Stage	Crop Progress			
	Percent of Acreage			
	Current	Prev. Week	Prev. Year	5 Year Avg
Corn				
Silked	96	92	89	93
Dough	68	58	71	71
Dented	56	52	52	62
Mature	45	41	41	50
Harvested	16	N/A	0	10
Cotton				
Squaring	90	82	86	90
Setting Bolls	42	36	40	45
Bolls Opening	9	6	8	10
Peanuts				
Pegging	65	57	58	77
Rice				
Headed	95	91	83	87
Harvested	16	6	0	4
Sorghum				
Headed	81	80	86	83
Coloring	59	58	62	71
Mature	51	50	51	63
Harvested	32	30	26	41
Soybeans				
Blooming	75	70	77	82
Setting Pods	50	40	54	58
Dropping Leaves	10	N/A	0	0
Sunflowers				
Harvested	3	N/A	5	5

Row Crops: Cotton development continued to progress ahead of normal across most of the state. In the Coastal Bend and Lower Valley, producers were defoliating cotton and beginning to harvest. Cotton bolls were opening in the Upper Coast and South Texas. In the Southern Plains, the Blacklands, and Edwards Plateau sorghum was maturing and getting ready for harvest. Sugarcane aphid populations continued to be a concern for sorghum producers in the High Plains and Blacklands. Soybean development progressed well in the Blacklands, and corn harvest continued in the Upper Coast and South Texas. Rice harvest was underway in the Upper Coast, while peanuts were still in the pegging stage in South Texas. Sunflower harvest began in the Blacklands.

Fruit, Vegetable and Specialty Crops: Watermelon harvest continued in the Southern High Plains. In South Texas, pecan orchards made good progress following the recent rainfall and additional irrigation applications.

Livestock, Range and Pasture: Range and pastures conditions across the state declined slightly due to heat stress and windy conditions, but overall were rated as 75 percent fair to good. Hay baling was active in many areas last week. Livestock remained in mostly good condition throughout the state.

Crop Condition

Crop	Percent of Acreage					Index ¹	
	Excellent	Good	Fair	Poor	Very Poor	2016	2015
Corn	11	46	30	10	3	74	75
Cotton	5	37	38	17	3	66	72
Peanuts	5	50	38	6	1	75	78
Rice	9	48	36	4	3	76	75
Sorghum	16	42	31	9	2	76	78
Soybeans	8	41	45	5	1	74	72
Range and Pasture	5	34	41	14	6	--	--

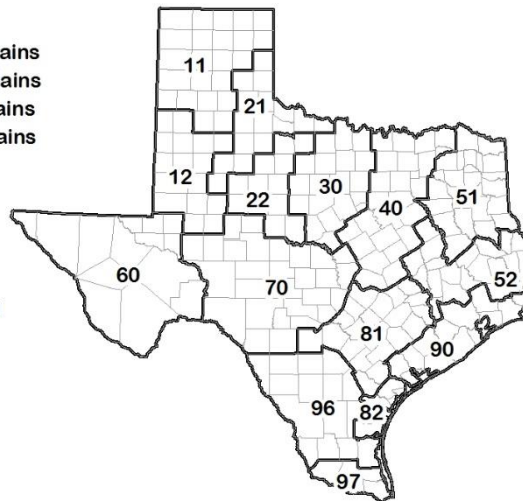
¹ The formula for the condition index is $I = (5V + 25P + 60F + 90G + 110E)/100$ where I = crop condition index and V, P, F, G, E = percentage of crop rated very poor, poor, fair, good, excellent.

Soil Moisture and Days Suitable by District

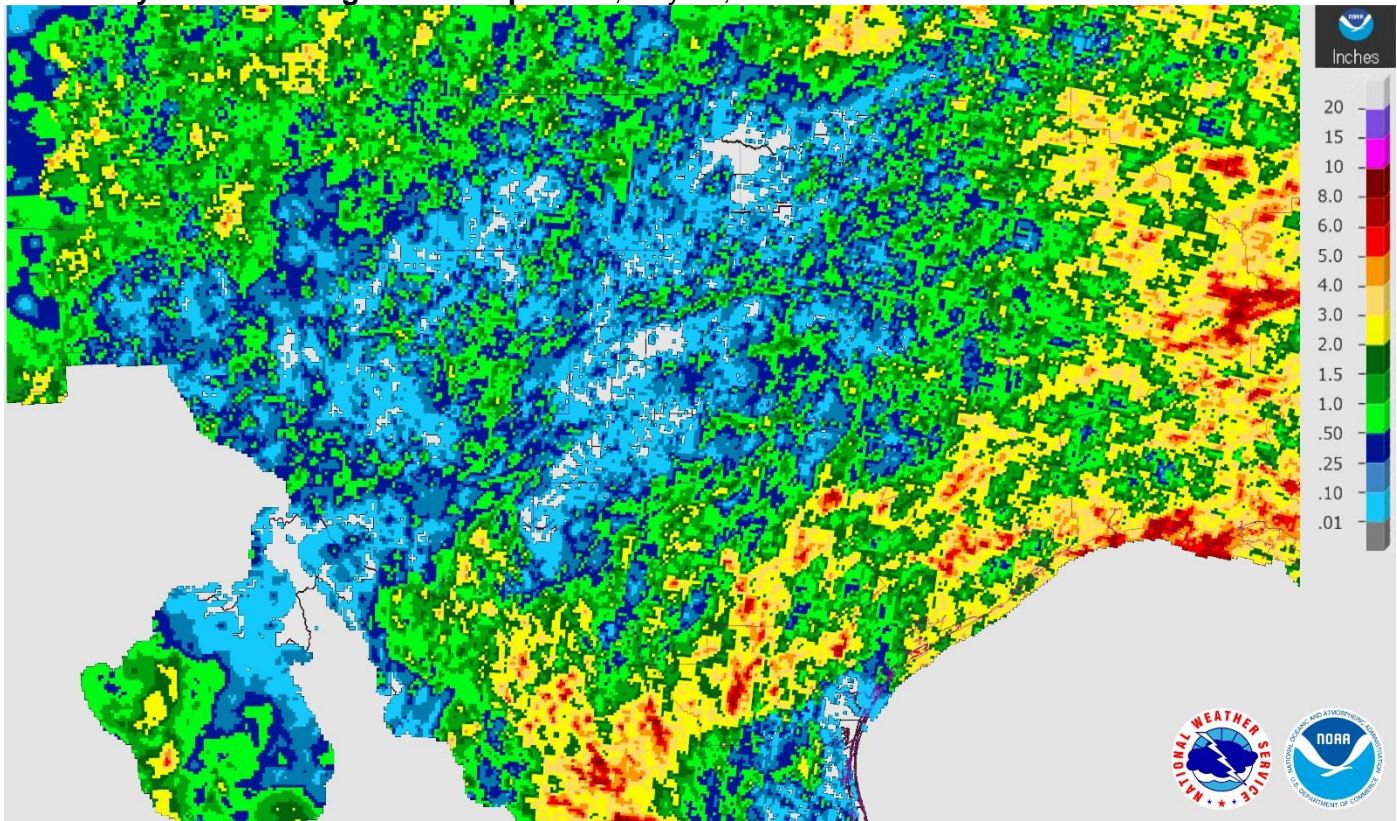
District	Topsoil Moisture Condition by District				Subsoil Moisture Condition by District				Days Suitable for Fieldwork
	Percentage of Acreage				Percentage of Acreage				
	Very Short	Short	Adequate	Surplus	Very Short	Short	Adequate	Surplus	
11	29	51	19	1	27	41	32	0	7.0
12	25	65	10	0	16	64	20	0	6.9
21	8	55	35	2	4	47	49	0	7.0
22	36	45	19	0	18	47	31	4	6.6
30	12	47	40	1	7	43	48	2	6.6
40	25	49	26	0	20	42	37	1	6.4
51	18	38	38	6	15	38	40	7	5.7
52	27	37	33	3	8	54	31	7	6.0
60	53	24	23	0	41	24	35	0	6.7
70	20	58	20	2	11	42	45	2	7.0
81	16	35	43	6	14	33	47	6	4.2
82	17	53	25	5	8	33	55	4	7.0
90	10	48	35	7	5	21	67	7	4.7
96	9	29	54	8	22	31	40	7	5.5
97	0	86	14	0	0	86	14	0	7.0
State	22	51	25	2	16	46	36	2	6.4

Texas Agricultural Districts

- 11 Northern High Plains
- 12 Southern High Plains
- 21 Northern Low Plains
- 22 Southern Low Plains
- 30 Cross Timbers
- 40 Blacklands
- 51 North East
- 52 South East
- 60 Trans-Pecos
- 70 Edwards Plateau
- 81 South Central
- 82 Coaster Bend
- 90 Upper Coast
- 96 South
- 97 Lower Valley

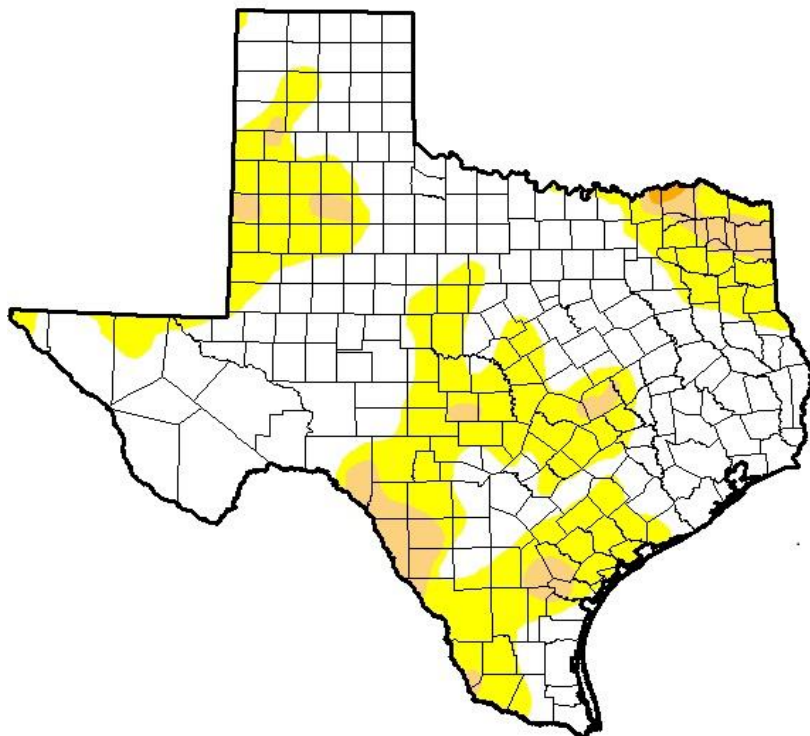


Seven Day Observed Regional Precipitation, July 31, 2016



Source: National Weather Service, www.nws.noaa.gov

Drought Monitor, Valid July 26, 2016



Drought Conditions (Percent Area)

	None	D0-D4	D1-D4	D2-D4	D3-D4	D4
Current	63.03	36.97	5.89	0.18	0.00	0.00
Last Week 7/19/2016	86.88	13.12	1.66	0.00	0.00	0.00
3 Months Ago 4/26/2016	86.91	13.09	2.28	0.27	0.00	0.00
Start of Calendar Year 1/22/2015	95.48	4.52	0.00	0.00	0.00	0.00
Start of Water Year 9/29/2015	34.51	65.49	38.32	17.55	6.27	0.00
One Year Ago 7/28/2015	86.45	13.55	0.65	0.00	0.00	0.00

Intensity:

- D0 Abnormally Dry
- D1 Moderate Drought
- D2 Severe Drought
- D3 Extreme Drought
- D4 Exceptional Drought

The Drought Monitor focuses on broad-scale conditions. Local conditions may vary. See accompanying text summary for forecast statements.

Author:

Brad Rippey
U.S. Department of Agriculture



Source: National Drought Mitigation Center, a partnership with USDA, U.S. Department of Commerce/NOAA, <http://droughtmonitor.unl.edu>