



# Texas Crop Progress and Condition

Southern Plains Regional Field Office  
Post Office Box 70 Austin, Texas 78767  
(800) 626-3142 · FAX (855) 270-2725 · www.nass.usda.gov/tx

Issue: TX-CW3016

Weekly Summary for August 1 - August 7

Released: August 8, 2016

Hot, dry weather continued across the state last week. The Northern High Plains, Trans-Pecos, and East Texas received the most significant rainfall, with isolated areas receiving up to 5 inches. Other areas reported little to no measurable precipitation last week. The Blacklands, Edwards Plateau, and South Central remained dry. Summer temperatures returned with highs averaging from the high 90's to mid 100's.

**Small Grains:** Small grain producers across the state continued field work ahead of fall seeding.

## Crop Progress

Stage	Percent of Acreage			
	Current	Prev. Week	Prev. Year	5 Year Avg
<b>Corn</b>				
Dough	87	68	83	78
Dented	57	56	54	64
Mature	46	45	48	54
Harvested	33	16	16	28
<b>Cotton</b>				
Squaring	96	90	93	96
Setting Bolls	62	42	53	66
Bolls Opening	13	9	9	12
Harvested	2	N/A	0	1
<b>Peanuts</b>				
Pegging	89	65	79	88
<b>Rice</b>				
Harvested	43	16	16	18
<b>Sorghum</b>				
Headed	84	81	87	84
Coloring	62	59	66	74
Mature	53	51	56	67
Harvested	42	32	32	45
<b>Soybeans</b>				
Blooming	80	75	84	87
Setting Pods	61	50	59	69
Dropping Leaves	14	10	8	4
<b>Sunflowers</b>				
Harvested	8	3	16	9

**Row Crops:** In both the High and Low Plains, dryland cotton was stressed due to high temperatures and lack of moisture. Irrigated cotton in the Plains was squaring and setting bolls. Cotton harvest was underway in the Coastal Bend, South Texas, and the Lower Valley. Corn, soybean, and sorghum harvest was active in areas of the southern part of the state. Rice harvest was progressing well in South Central Texas and the Upper Coast. Peanuts were in good condition in the Northern Plains.

**Fruit, Vegetable and Specialty Crops:** Field preparations for fall vegetables were active in areas of the Lower Valley. Pecan orchards in South Texas progressed favorably, while lack of sufficient moisture stressed pecan orchards in the Cross Timbers.

**Livestock, Range and Pasture:** Livestock were in good condition. Forage for cattle was drying out throughout the state and livestock ponds were beginning to lower. Producers in Northeast Texas and South Central began to provide supplemental feed. Range and pasture was in need of rainfall as hot, dry conditions depleted soil moisture across much of the state. Haying was underway in areas of South Texas and the Lower Valley. Armyworms and grasshoppers were reported on hay fields and pastures in areas of Northeast Texas.

**Crop Condition**

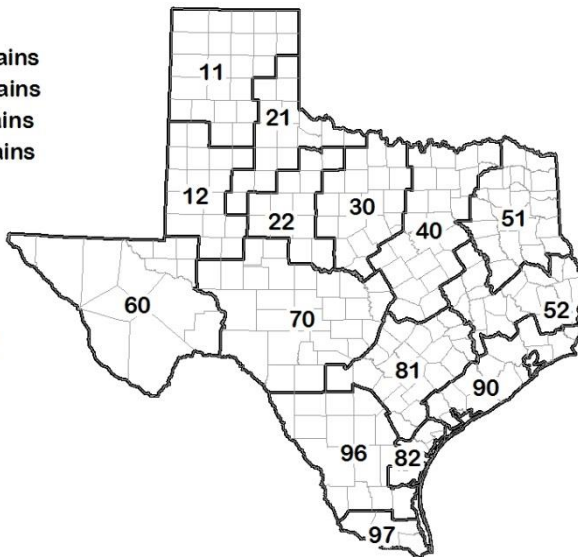
Crop	Percent of Acreage					Index <sup>1</sup>	
	Excellent	Good	Fair	Poor	Very Poor	2016	2015
Corn	11	46	30	11	2	74	78
Cotton	5	34	39	19	3	64	73
Peanuts	5	48	35	12	0	73	78
Rice	15	33	45	4	3	74	73
Sorghum	15	42	31	10	2	76	79
Soybeans	7	37	48	6	2	71	74
Range and Pasture	3	30	41	18	8	--	--

<sup>1</sup> The formula for the condition index is  $I = (5V + 25P + 60F + 90G + 110E)/100$  where I = crop condition index and V, P, F, G, E = percentage of crop rated very poor, poor, fair, good, excellent.

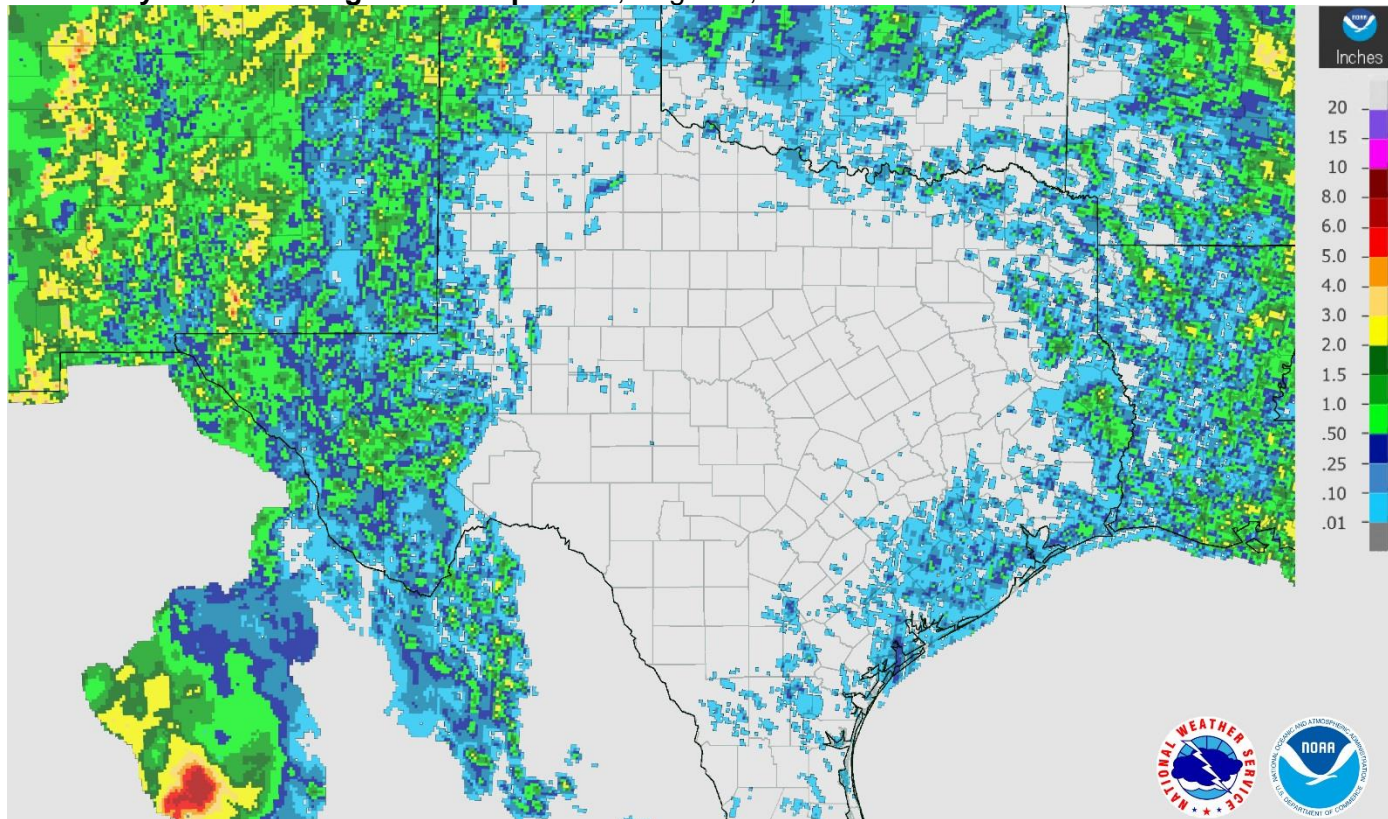
**Soil Moisture and Days Suitable by District**

District	Topsoil Moisture Condition by District				Subsoil Moisture Condition by District				Days Suitable for Fieldwork
	Percentage of Acreage				Percentage of Acreage				
	Very Short	Short	Adequate	Surplus	Very Short	Short	Adequate	Surplus	
11	40	47	13	0	29	46	25	0	6.5
12	41	54	5	0	32	53	15	0	7.0
21	13	58	29	0	4	56	40	0	6.9
22	42	42	16	0	21	50	25	4	6.5
30	27	49	24	0	11	58	31	0	6.4
40	32	48	20	0	26	43	30	1	7.0
51	18	41	35	6	21	34	38	7	6.7
52	30	42	28	0	10	56	34	0	7.0
60	28	24	48	0	29	18	53	0	6.6
70	29	55	14	2	14	44	40	2	6.9
81	20	32	44	4	13	31	52	4	6.5
82	37	63	0	0	13	55	32	0	7.0
90	9	50	35	6	5	29	60	6	6.7
96	26	32	35	7	26	41	26	7	6.8
97	26	64	10	0	26	63	11	0	7.0
State	32	48	19	1	22	46	30	2	6.7

- 11 Northern High Plains
- 12 Southern High Plains
- 21 Northern Low Plains
- 22 Southern Low Plains
- 30 Cross Timbers
- 40 Blacklands
- 51 North East
- 52 South East
- 60 Trans-Pecos
- 70 Edwards Plateau
- 81 South Central
- 82 Coaster Bend
- 90 Upper Coast
- 96 South
- 97 Lower Valley

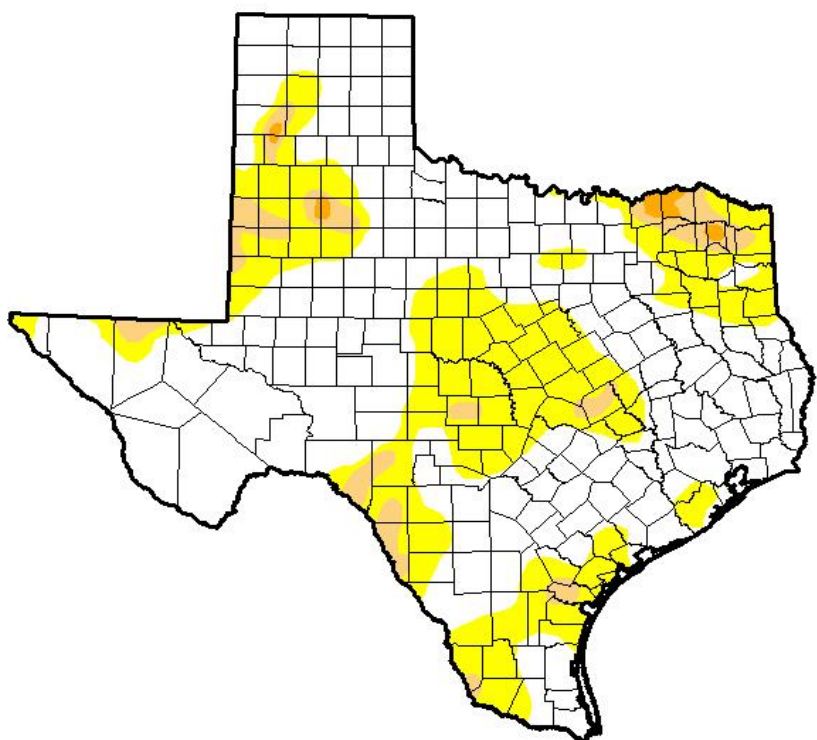


## Seven Day Observed Regional Precipitation, August 7, 2016



Source: National Weather Service, [www.nws.noaa.gov](http://www.nws.noaa.gov)

## Drought Monitor, Valid August 2, 2016



Drought Conditions (Percent Area)

	None	D0-D4	D1-D4	D2-D4	D3-D4	D4
<b>Current</b>	65.35	34.65	5.83	0.64	0.00	0.00
<b>Last Week</b> <i>7/26/2016</i>	63.03	36.97	5.89	0.18	0.00	0.00
<b>3 Months Ago</b> <i>5/3/2016</i>	89.33	10.67	1.08	0.00	0.00	0.00
<b>Start of Calendar Year</b> <i>12/29/2015</i>	95.48	4.52	0.00	0.00	0.00	0.00
<b>Start of Water Year</b> <i>9/29/2015</i>	34.51	65.49	38.32	17.55	6.27	0.00
<b>One Year Ago</b> <i>8/4/2015</i>	72.33	27.67	4.61	0.18	0.00	0.00

*Intensity:*

- D0 Abnormally Dry
- D1 Moderate Drought
- D2 Severe Drought
- D3 Extreme Drought
- D4 Exceptional Drought

*The Drought Monitor focuses on broad-scale conditions. Local conditions may vary. See accompanying text summary for forecast statements.*

**Author:**  
Richard Tinker  
CPC/NOAA/NWS/NCEP



Source: National Drought Mitigation Center, a partnership with USDA, U.S. Department of Commerce/NOAA, <http://droughtmonitor.unl.edu>